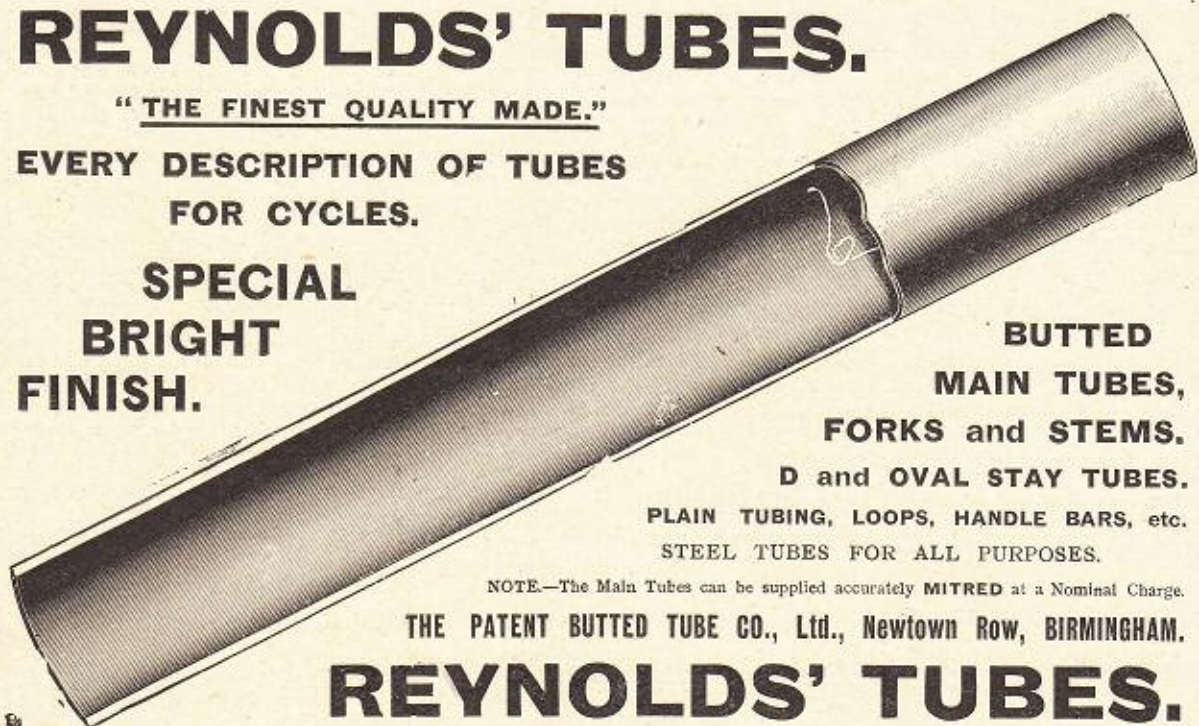


REYNOLDS' TUBES.

"THE FINEST QUALITY MADE."

EVERY DESCRIPTION OF TUBES
FOR CYCLES.

SPECIAL
BRIGHT
FINISH.



BUTTED
MAIN TUBES,
FORKS and STEMS.

D and OVAL STAY TUBES.

PLAIN TUBING, LOOPS, HANDLE BARS, etc.
STEEL TUBES FOR ALL PURPOSES.

NOTE.—The Main Tubes can be supplied accurately MITRED at a Nominal Charge.

THE PATENT BUTTED TUBE CO., Ltd., Newtown Row, BIRMINGHAM.

REYNOLDS' TUBES.

INNER TUBES.

FLOATING RUBBER.

A quality (boxed) - **2/6** each.

B quality (boxed) - **2/3** each.

C quality - **1/9** each.

Valves fitted 3d. extra.

The Manchester Tyre Co.,
Longford Buildings,
Oxford Road, MANCHESTER.

Telegrams: "Rubber."

Telephone 307 x.



LION & ARROW CYCLE CHAINS

WITH . . .

IMMOVABLE HARDENED BUSHES,
SHOULDERED RIVETS,
TOUGHENED SIDE PLATES,
AND
HIGH-GRADE STEEL,
Resist a tensile strain of 13 cwt.

These are the details that make up a
reliable Chain—We make a speciality of
Cycle Chains, and produce a first-class
article at a low price.

— ONCE TRIED ALWAYS USED. —

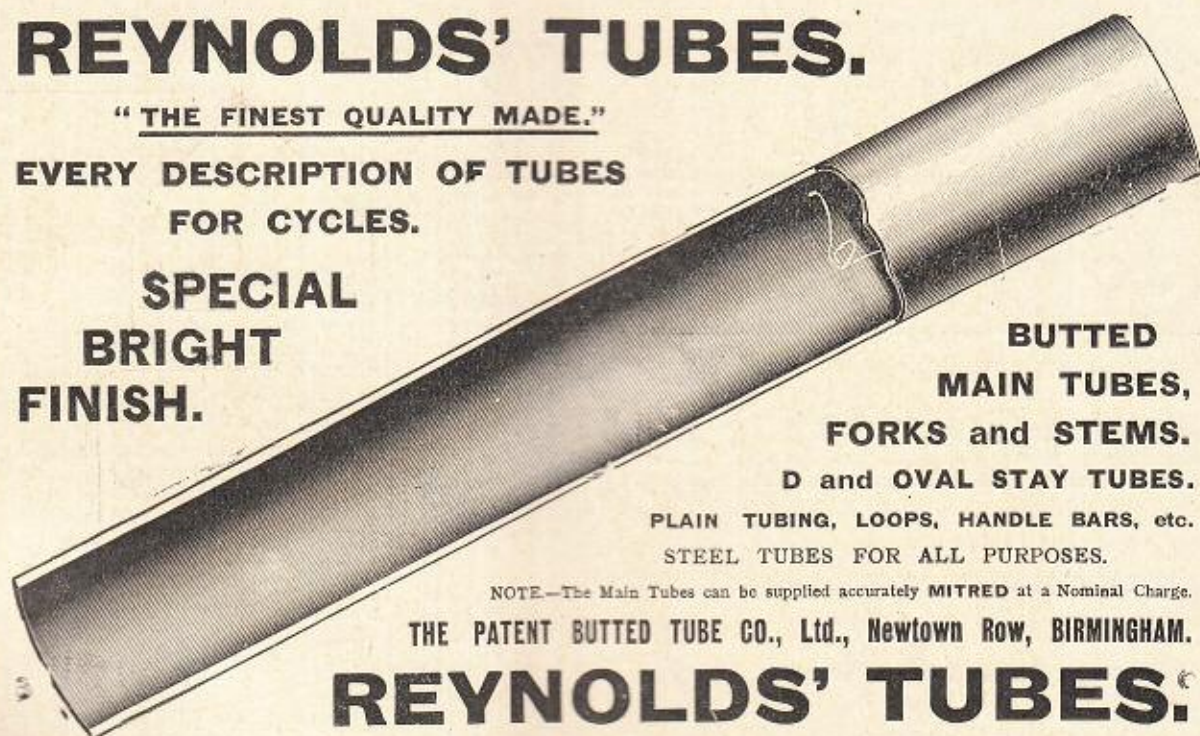
PEUGEOT BROTHERS,
The Chain Specialists,
PERCY ROAD, BIRMINGHAM.

REYNOLDS' TUBES.

"THE FINEST QUALITY MADE."

EVERY DESCRIPTION OF TUBES
FOR CYCLES.

SPECIAL
BRIGHT
FINISH.



BUTTED
MAIN TUBES,
FORKS and STEMS.

D and OVAL STAY TUBES.

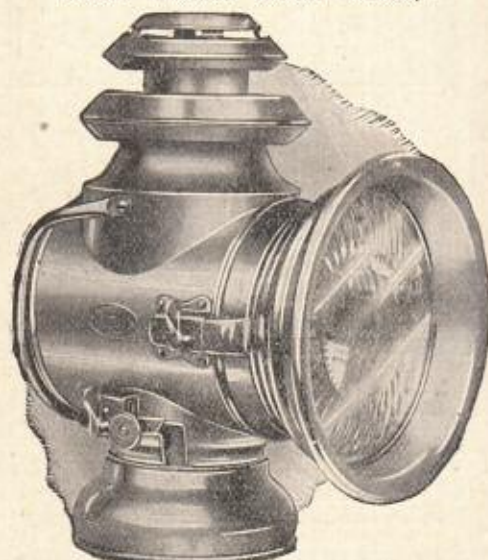
PLAIN TUBING, LOOPS, HANDLE BARS, etc.
STEEL TUBES FOR ALL PURPOSES.

NOTE.—The Main Tubes can be supplied accurately MITRED at a Nominal Charge.

THE PATENT BUTTED TUBE CO., Ltd., Newtown Row, BIRMINGHAM.

REYNOLDS' TUBES.

The 'RUSSELL SUNLIGHT' Side Lamp,
1907 Model (Reqd. Design).



There will be more "Russell" Lamps on
high-class Cars at Olympia than those
of ANY OTHER Maker.

ALFRED RUSSELL & CO., Bedford Works, WALSALL.



LION & ARROW CYCLE CHAINS

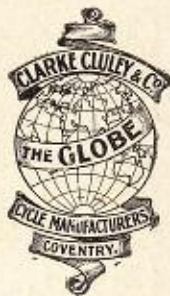
WITH . . .

IMMOVABLE HARDENED BUSHES,
SHOULDERED RIVETS,
TOUGHENED SIDE PLATES,
AND
HIGH-GRADE STEEL,
Resist a tensile strain of 13 cwts.

These are the details that make up a
reliable Chain—We make a speciality of
Cycle Chains, and produce a first-class
article at a low price.

- ONCE TRIED ALWAYS USED. -

PEUGEOT BROTHERS,
The Chain Specialists,
PERCY ROAD, BIRMINGHAM.

STAND
113.**GLOBE**OFFICE
67.THE MARK
OF MERIT.

Some reasons why so many Traders have already secured the 1907 Globe Agency.

- (1). Because Globe Bicycles are the most saleable machines, and the best value.
- (2). Because our Agency Terms are exceedingly liberal.
- (3). Because our policy is one Agent one district.
- (4). Because we do no retail trade, but refer all enquiries to our Agents.

If you want the Agency, call on us to-day.

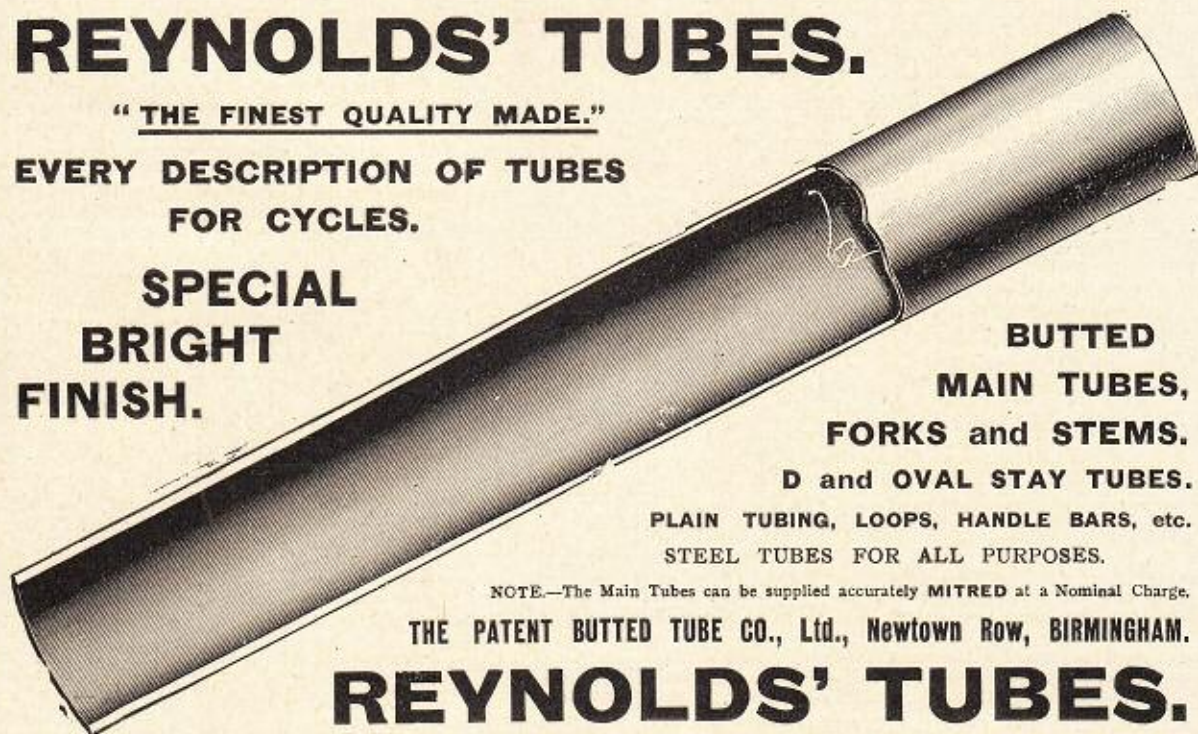
THE SIGN OF
SATISFACTION.

CLARKE, CLULEY & CO., (of **Coventry.**) **STAND 113, OFFICE 67, STANLEY SHOW.**

REYNOLDS' TUBES."THE FINEST QUALITY MADE."

EVERY DESCRIPTION OF TUBES
FOR CYCLES.

**SPECIAL
BRIGHT
FINISH.**



**BUTTED
MAIN TUBES,
FORKS and STEMS.
D and OVAL STAY TUBES.**

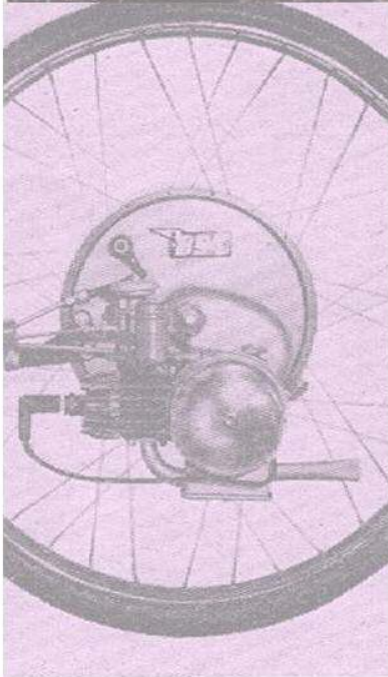
PLAIN TUBING, LOOPS, HANDLE BARS, etc.
STEEL TUBES FOR ALL PURPOSES.

NOTE.—The Main Tubes can be supplied accurately MITRED at a Nominal Charge.

THE PATENT BUTTED TUBE CO., Ltd., Newtown Row, BIRMINGHAM.

REYNOLDS' TUBES.

IceniCAM Information Service



www.icenicam.org.uk