

A large, bold, black logo consisting of the letters 'NVT' in a highly stylized, blocky font. The letters are interconnected, with the 'N' and 'V' sharing a vertical stroke and the 'T' having a thick horizontal base.

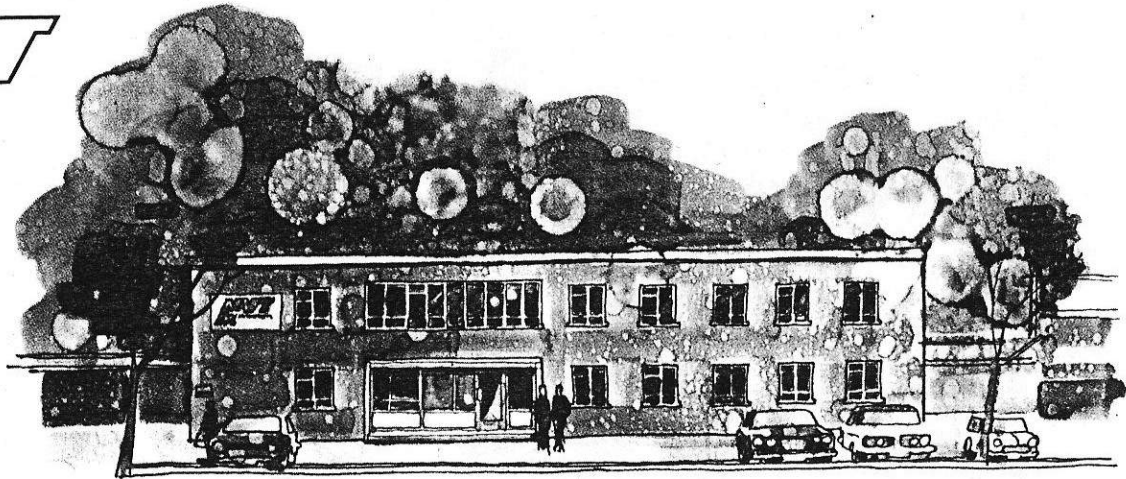
Ride the Flag

NVT Motorcycles Lynn Lane Shenstone Lichfield Staffordshire



The Shenstone factory of NVT Motorcycles, situated in Britain's industrial heartland, is the production and assembly plant for the Easy Rider range. This is also the location of the company's engineering and development department.

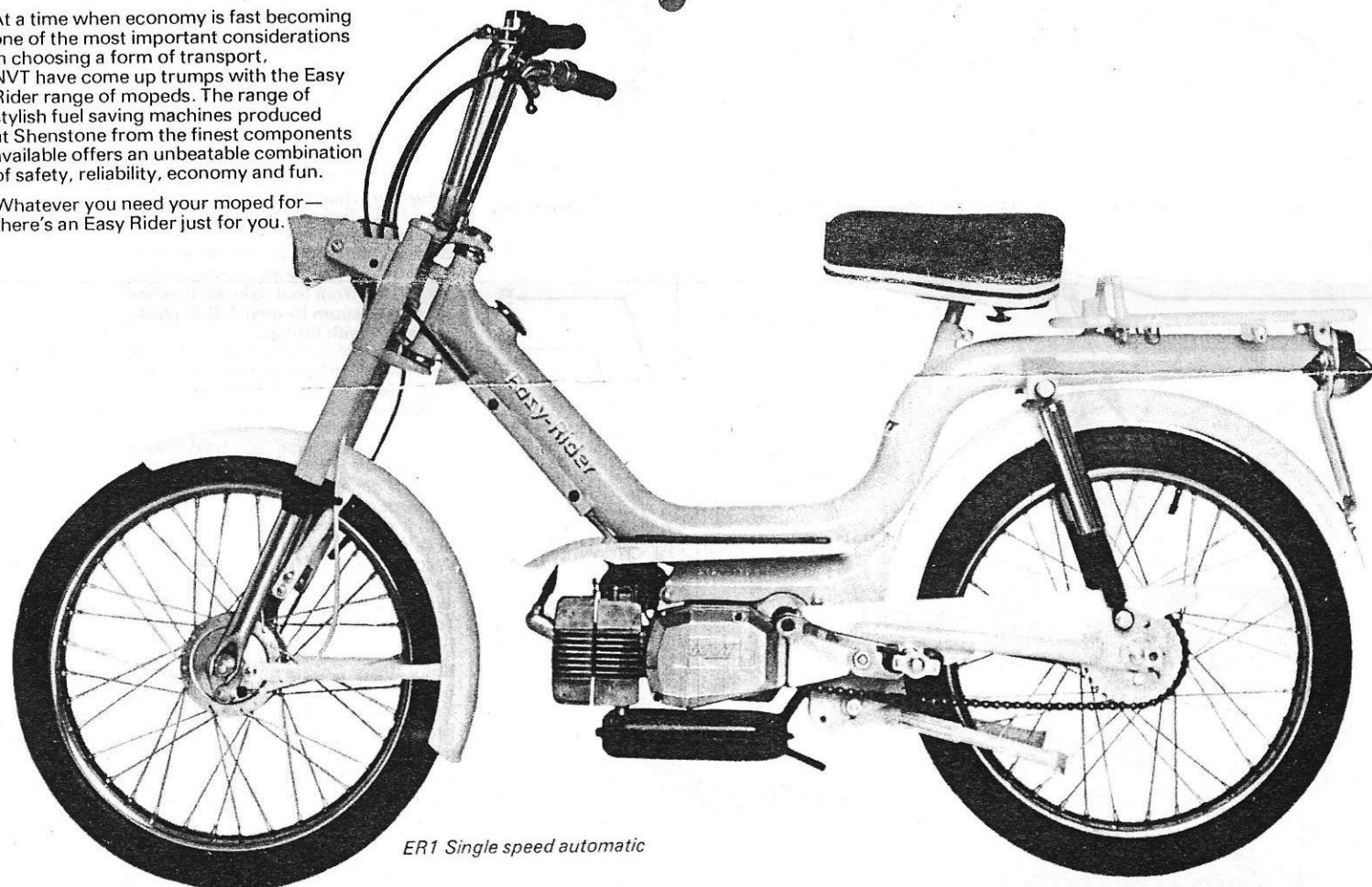
The Parts and Service Division in Andover handles all after-sales activities for NVT customers at home and abroad.



NVT Easy-Rider

At a time when economy is fast becoming one of the most important considerations in choosing a form of transport, NVT have come up trumps with the Easy Rider range of mopeds. The range of stylish fuel saving machines produced at Shenstone from the finest components available offers an unbeatable combination of safety, reliability, economy and fun.

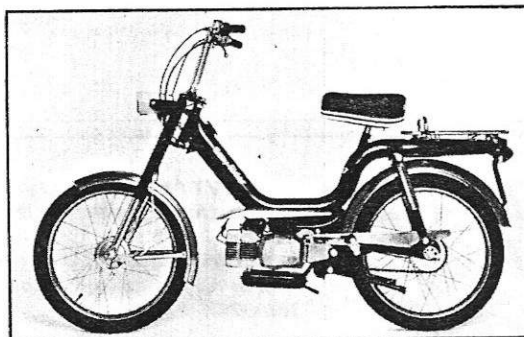
Whatever you need your moped for—there's an Easy Rider just for you.



ER1 Single speed automatic

The foundation of the Easy Rider range is the ER1 model, a comfortable 50cc machine to get you around without any fuss. Pedal start the engine, and the automatic clutch transmission will do the rest. Rear suspension and telescopic front forks iron out the bumps. Chunky tyres and an extra large 'be seen' rear light give safety to match the fun you'll have. And for that little extra in acceleration and hill climbing ability, the ER2P has a similar specification, but with the addition of two speed automatic transmission.

The ER2 is for those requiring an even higher standard of finish. With stainless steel mudguards, chrome plated chainguard and traditional black or candy-apple red paint, the ER2 stands a cut above its rivals.

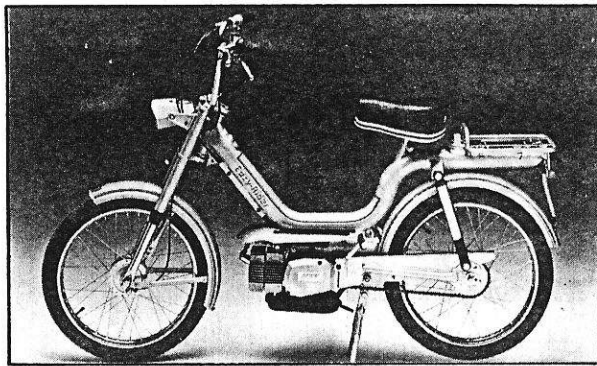


ER2 Two speed automatic



Final inspection of a shipment of Easy Riders prior to despatch from Shenstone.

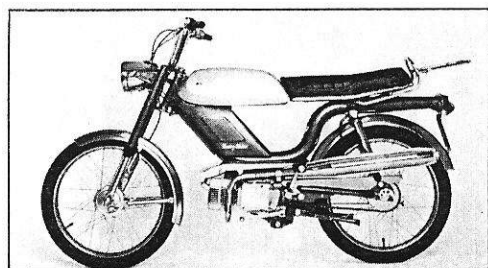
Easy-Rider for Everyone



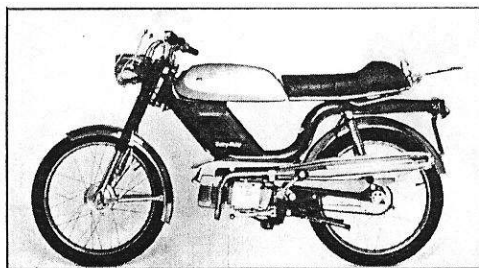
Silver Specials

To celebrate the 1977 Jubilee, the prestige versions of the ER1 and ER2 have been produced in luxurious silver. With their hand-painted royal blue and red coach lines, these models offer an unrivalled appearance which will increase still further the user's pride of ownership.

Silver Specials. All the practical features of the Easy-Rider range, with the exclusive appeal of a limited edition.



ER4L



ER4TL

4 L Range

If you want something with real extra sparkle, the ER4L and 4TL offer crisp styling and handling that makes you forget they are mopeds. With a 50 c.c. power unit, they incorporate a four-speed gearbox with foot change, high level exhaust, stainless steel mudguards, and all the feel of a full size machine. The 4TL also has a sleek handlebar fairing, and a sports type seat styled to blend with the lines of the chromed rear carrier.

Junior

The latest addition to the Easy Rider range is a 50 c.c. sports machine for off-road use, aimed at the rider aged 6 to 12. The advanced specification includes cantilever rear suspension, folding footrests, gaitered forks, safety chainguard, and competition-type prop stand. The ultra silent exhaust system, with tucked away chromed silencer, is designed for use in urban or rural areas, and the modern comp. bike styling, combined with kick-starting, single-speed automatic transmission and safety ball-ended levers, make this an ideal machine for any enthusiastic youngster.

Accessories

1 Wind Shield. Handlebar mounted, fully adjustable for height. Complete with chrome plated fittings.

2 Mirror. Rear view mirror fully adjustable. Secures to handlebar. Chrome plated.

3 Leg Shield. Full length, styled to fit Easy-Rider, quickly and simply. Offers protection from foot to knee. In white durable vacuum formed A.B.S. plastic. Complete with fittings.

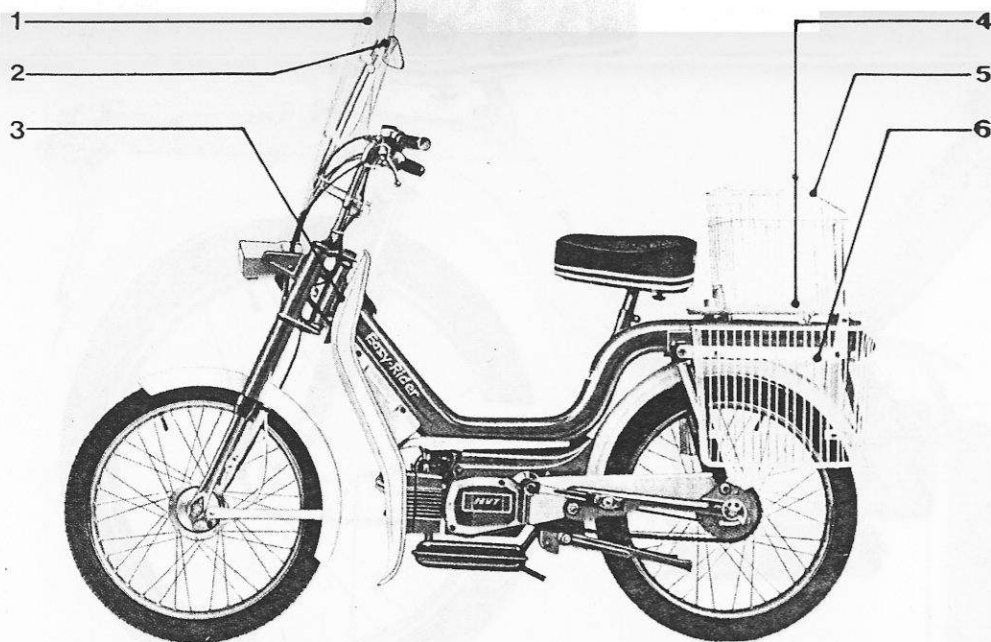
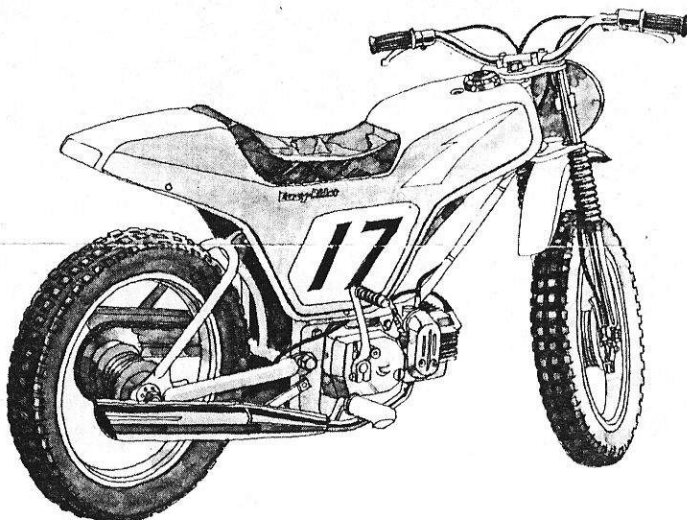
4 Lock. Basket/helmet lock, engages with carrier to lock lid and basket to machine. Also acts as helmet lock.

5 Basket. White coated wire basket with carrying handle and lockable lid. Large enough to hold a full face safety helmet.

6 Panniers. Styled to match basket. Sturdily constructed, in white coated wire. Generous carrying capacity yet when fitted, are no wider than max. machine width. Complete with fixing bracket. Also available, shopping cases to fit snugly into panniers. Rigid sides, finished in safety white P.V.C. with "dayglo" orange stripes front and rear.

Easy Rider Colours:

- ER Junior—Silver cycle parts and blue or red tank and seat unit.
- ER1 Orange, or dark blue, and white.
- ER1SS Silver, with hand lining.
- ER2P Red and white.
- ER2 Black, or candy-apple red, and stainless steel.
- ER2SS Silver, with hand lining.
- ER4L } Candy apple red, or pacific blue, and stainless steel.
- ER4TL }



NVT

MOTORCYCLES

Ride the Flag

NVT Motorcycles Lynn Lane Shenstone Lichfield
Staffordshire WS14 0EA Tel: 0543 480633.

NVT Motorcycles Parts and Service Division
North Way Andover Hampshire SP105 BD
Tel. 0264 61411

NVT Motorcycles Limited including all associated companies reserve the right to vary the specification of all motorcycles and spare parts without notice and the information in this leaflet does not therefore constitute a term of any sale. All descriptions and claims are given and made in good faith but are intended to apply generally. Variations in performance and construction on individual machines may occur. Performance on any particular occasion will also be affected by the conditions, circumstances and the rider.



We recommend
Castrol lubricants

IceniCAM Information Service



www.icenicam.org.uk