

PLEASE HANG UP FOR REFERENCE.

FOR TRADE CIRCULATION ONLY.

SEASON 1913.

WHOLESALE
PRICE LIST

TYRES, TUBES,
ACCESSORIES.

RUBBER and
WATERPROOF GOODS.

YORKSHIRE RUBBER CO.

Waterproof Makers and
Rubber Manufacturers,

20, BOAR LANE, LEEDS.

Telephone 59;

*Proprietor, Mr. S. B. SMITH, many years Manager of
Leeds Rubber Co., who after "Ten Toil Years," has
crossed the Rubicon 'twixt Servant and Master and
founded:—*

"MY WAY."

We are Wholesale Factors and Large Stockists of

MICHELIN TYRES.

TRADE NETT CASH PRICES.

MICHELIN CYCLE TYRES.

	Wired Cover.	Beaded Cover.	Tube with Valve.
Ordinary Roadster	5/4	5/10	3/8
Tandem (for Heavy Work) . .	8/-	9/-	3/8
	28×1 $\frac{3}{8}$ 28×1 $\frac{1}{2}$	26×1 $\frac{1}{2}$ 28×1 $\frac{1}{2}$	
	28×1 $\frac{3}{4}$	28×1 $\frac{1}{2}$	
Simplex Red Tube, Butt Ended,			all Sizes 3/8

MICHELIN MOTOR CYCLE TYRES.

COVERS.	24"		26"				28"	
	2"	2 $\frac{1}{2}$ "	2"	2 $\frac{1}{4}$ "	2 $\frac{3}{8}$ "	2 $\frac{1}{2}$ "	2"	2 $\frac{1}{4}$ "
LIGHT, Wired	—	—	11/-	12/-	13/-	13/-	12/-	—
„ Beaded	12/-	—	11/9	13/-	14/-	15/3	13/6	13/9
TRIDENT, Wired	—	—	—	23/6	—	25/-	—	—
„ Beaded	—	—	—	24/-	—	26/6	—	—
STANDARD Wired } Plain, Extra Strong	—	—	22/-	24/-	25/-	25/6	—	—
STANDARD Beaded } Plain, Extra Strong	21/6	—	23/-	24/6	25/-	27/-	—	—
SEMELLE, Wired	—	—	29/6	32/-	32/6	34/6	—	—
„ Beaded	29/3	—	30/-	32/-	33/-	35/6	—	—
TUBES, Plain	6/9	—	7/-	7/3	8/-	7/7	7/5	7/10
„ Butted	8/3	—	8/6	8/9	9/6	9/1	8/11	9/4

INNER TUBES.

		Without Valve.	With Valve.
YORKSHIRE RUBBER CO.'S "SPECIAL"			
A competitive line.	Guaranteed.		
	All sizes	1/11	2/1
YORKSHIRE RUBBER CO.'S "No. 2 GREY."			
A guaranteed tube.	All sizes	2/4	2/6
YORKSHIRE RUBBER CO.'S "No. 1 GREY."			
A good guaranteed tube.	Largely sold.		
	All sizes	2/7	2/9
YORKSHIRE RUBBER CO.'S "HIGH GRADE."			
Reliable guaranteed tube.	Very largely sold for many years with universal satisfaction.		
	All sizes	3/1	3/3
YORKSHIRE RUBBER CO.'S "BEST."			
Super quality. As supplied for ten years.			
Fully guaranteed. Every tube tested before leaving our Works.	All sizes	3/4	3/6
YORKSHIRE RUBBER CO.'S "EXTRA THICK."			
Fullest guarantee. Specially made in best stout-quality rubber for heavy riders and long mileages.	All sizes	3/10	4/-

TRADE CASH PRICES.

NOTE ADDRESS :

YORKSHIRE RUBBER CO., 20, Boar Lane, LEEDS.

OUTER COVERS.

		Wired-on.	Beaded Edge.
"REPLACEMENT" COVERS.	Roadster.		
Guaranteed 3 months.	All sizes	2/9	2/9
"SPECIAL" COVERS.	Roadster.		
Guaranteed 6 months.	Good value. All sizes	3/3	3/3
"ECLIPSE" COVERS.	Roadster.		
Guaranteed 6 months.	Reliable. All sizes	3/6	4/-
"COBRA" COVERS.	Roadster.		
Guaranteed 6 months.	Superior. All sizes	3/7	3/7
"WELBECK" COVERS.	Roadster.		
Guaranteed 9 months.	Sold for many years with much satisfaction.	All sizes	4/3
		4/3	4/9
"CONREX" COVERS.	Roadster.		
Guaranteed 9 months.	Splendid Wearer.		
Very good value.	All sizes	4/7	4/7
"MELTON" COVERS.	Roadster.		
Guaranteed 12 months.	Thick tread.		
Well recommended.	All sizes	5/-	5/4
"MACINTOSH" COVERS.	Heavy Roadster.		
Guaranteed 12 months.	All sizes	5/6	5/6
"CONTINENTAL SPECIAL" COVERS.			
Guaranteed 13 months.	Manufactured with specially touch and resilient fabric		
	All sizes	5/7	5/7
"ARDWICK" COVERS.	Roadster.		
Guaranteed 13 months.	Extra "Tough Tread" Rubber. As sold for many years.		
For durability and wear fully equal to most competitive "Best" Grades. The attention of Cycle Agents is specially directed to this good Cover.	All sizes	6/1	6/4

NOTE ADDRESS :

YORKSHIRE RUBBER CO., 20, Boar Lane, LEEDS.

TYRES. Standard makes.

			Per Cover.	Per Tube with Valve.
PALMER ROADSTER, Wired or Beaded—				
		26" × 1 $\frac{1}{4}$ "	7/9	3/8
"	"	26" × 1 $\frac{3}{8}$ "	8/1	3/9
"	"	26" × 1 $\frac{1}{2}$ "	8/5	3/10
"	"	26" × 1 $\frac{3}{4}$ "	8/8 $\frac{1}{2}$	3/11
"	"	28" × 1 $\frac{1}{4}$ "	8/1	3/9
"	"	28" × 1 $\frac{3}{8}$ "	8/5	3/10
"	"	28" × 1 $\frac{1}{2}$ "	8/8 $\frac{1}{2}$	3/11
"	"	28" × 1 $\frac{3}{4}$ "	9/0 $\frac{1}{2}$	4/-
PALMER "SPECIAL," Wired or Beaded—				
		26" × 1 $\frac{1}{4}$ "	13/3 $\frac{1}{2}$	6/4
"	"	26" × 1 $\frac{3}{8}$ "	13/3 $\frac{1}{2}$	6/4
"	"	26" × 1 $\frac{1}{2}$ "	13/7 $\frac{1}{2}$	6/5
"	"	26" × 1 $\frac{3}{4}$ "	13/11	6/5
"	"	28" × 1 $\frac{1}{4}$ "	13/7 $\frac{1}{2}$	6/5
"	"	28" × 1 $\frac{3}{8}$ "	13/7 $\frac{1}{2}$	6/5
"	"	28" × 1 $\frac{1}{2}$ "	13/11	6/5 $\frac{1}{2}$
"	"	28" × 1 $\frac{3}{4}$ "	14/3	6/6 $\frac{1}{2}$
DUNLOP "ROADSTER," Wired				
		26" × 1 $\frac{1}{4}$ "	7/7	3/8
"	"	26" × 1 $\frac{3}{8}$ "	7/11	3/9
"	"	26" × 1 $\frac{1}{2}$ "	8/3	3/10
"	"	26" × 1 $\frac{3}{4}$ "	8/6 $\frac{1}{2}$	3/11
"	"	28" × 1 $\frac{1}{4}$ "	7/11	3/9
"	"	28" × 1 $\frac{3}{8}$ "	8/3	3/10
"	"	28" × 1 $\frac{1}{2}$ "	8/6 $\frac{1}{2}$	3/11
"	"	28" × 1 $\frac{3}{4}$ "	8/11	4/-
Dunlop Roadster Beaded Covers, 3d. extra.				
DUNLOP "SPECIAL," Wired				
		26" × 1 $\frac{3}{8}$ "	9/-	5/2 $\frac{1}{2}$
"	"	26" × 1 $\frac{1}{2}$ "	9/3 $\frac{1}{2}$	5/3 $\frac{1}{2}$
"	"	26" × 1 $\frac{3}{4}$ "	9/7 $\frac{1}{2}$	5/4 $\frac{1}{2}$
"	"	28" × 1 $\frac{3}{8}$ "	9/3 $\frac{1}{2}$	5/3 $\frac{1}{2}$
"	"	28" × 1 $\frac{1}{2}$ "	9/7 $\frac{1}{2}$	5/4 $\frac{1}{2}$
"	"	28" × 1 $\frac{3}{4}$ "	9/11	5/5 $\frac{1}{2}$
Dunlop Special Beaded Covers, 3d. extra.				
WARWICK ROADSTER, Wired				
		26" × 1 $\frac{3}{8}$ "	6/3	2/9
"	"	26" × 1 $\frac{1}{2}$ "	6/6	2/10
"	"	26" × 1 $\frac{3}{4}$ "	6/8 $\frac{1}{2}$	2/11
"	"	28" × 1 $\frac{3}{8}$ "	6/6	2/10
"	"	28" × 1 $\frac{1}{2}$ "	6/8 $\frac{1}{2}$	2/11
"	"	28" × 1 $\frac{3}{4}$ "	6/11 $\frac{1}{2}$	3/-
Warwick Roadster Beaded Covers, 3d. extra.				

TYRES. STANDARD MAKES *(continued).*

			Per Cover	Per Tube with Valve.
CAMBRIDGE ROADSTER,	Wired	26" × 1 $\frac{3}{8}$ "	5/6	2/9
"	"	26" × 1 $\frac{1}{2}$ "	5/9	2/10
"	"	26" × 1 $\frac{3}{4}$ "	6/-	2/11
"	"	28" × 1 $\frac{3}{8}$ "	5/9	2/10
"	"	28" × 1 $\frac{1}{2}$ "	6/-	2/11
"	"	28" × 1 $\frac{3}{4}$ "	6/3	3/-

Cambridge Roadster Beaded Covers, 3d. extra.

EDINBURGH ROADSTER,	Wired	26" × 1 $\frac{3}{8}$ "	4/7	2/3
"	"	26" × 1 $\frac{1}{2}$ "	4/9 $\frac{1}{2}$	2/4
"	"	26" × 1 $\frac{3}{4}$ "	5/0 $\frac{1}{2}$	2/5
"	"	28" × 1 $\frac{3}{8}$ "	4/9 $\frac{1}{2}$	2/4
"	"	28" × 1 $\frac{1}{2}$ "	5/0 $\frac{1}{2}$	2/5
"	"	28" × 1 $\frac{3}{4}$ "	5/3 $\frac{1}{2}$	2/6

Edinburgh Roadster Beaded Covers, 3d. extra.

MICHELIN CYCLE TYRES—		Wired Cover	Beaded Cover	Per Tube with Valve
Ordinary Roadster	All sizes	5/4	5/10	3/8
Heavy Roadster Tandem	" "	8/-	9/-	3/8
Simplex Red Tube, Butt Ended				3/8

CLINCHER "A.WON."	Wired or Beaded.		Per Cover	Per Tube with Valve
	All sizes.		8/-	4/2

CLINCHER "B GRADE."	Wired. All sizes.	6/5	3/-
----------------------------	-------------------	-----	-----

Clincher B Grade Beaded Covers 3d. extra.

REFLEX CLIPPER "SPEED" COVERS,

Road Racing, Wired	26" × 1 $\frac{1}{4}$ " and 26" × 1 $\frac{3}{8}$ "	6/2	2/10
" " "	28" × 1 $\frac{1}{4}$ " and 28" × 1 $\frac{3}{8}$ "	6/5	2/11

Reflex Clipper Beaded Edge Covers, 3d. extra.

Made in best Red Rubber and Guaranteed
12 months.

REFLEX CLIPPER "SPRINT" TYRES (Tubular)—

Light—26" × 1", 26" × 1 $\frac{1}{8}$ ", 28" × 1", 28" × 1 $\frac{1}{8}$ "	20/- pair.
Heavy—26" × 1 $\frac{1}{8}$ ", 28" × 1 $\frac{1}{8}$ "	22/6 pair.

Many British and World's records have been
made with this Tyre, which is a great favourite
with the leading racing experts.

NOTE ADDRESS :

YORKSHIRE RUBBER CO., 20, Boar Lane, LEEDS.

MAIL CART and PERAMBULATOR TYRES.

For the convenience of our customers we list below all Pram Tyres at price each, instead of per pound, as previously. Customers can now at a glance estimate the exact cost of every size.

PRAM TYRES. Standard Quality. Grey only.

Size of Wheel	6"	7"	8"	9"	10"	11"	12"	13"	14"
Price per Tyre—									
$\frac{3}{8}$ " thick	1 $\frac{1}{2}$ d.	2d.	2d.	2 $\frac{1}{2}$ d.	3d.	3 $\frac{1}{2}$ d.	3 $\frac{1}{2}$ d.	—	4d.
$\frac{1}{2}$ " thick	2 $\frac{1}{2}$ d.	3d.	3 $\frac{1}{2}$ d.	4d.	4 $\frac{1}{2}$ d.	5d.	5d.	5 $\frac{1}{2}$ d.	5 $\frac{1}{2}$ d.
$\frac{7}{16}$ " thick	—	—	—	—	6d.	—	6d.	—	7 $\frac{1}{2}$ d.

Size of Wheel	16"	18"	20"	22"	23"	24"	25"	26"
Price per Tyre—								
$\frac{1}{2}$ " thick	6d.	7d.	8d.	9d.	9 $\frac{1}{2}$ d.	10d.	11d.	11 $\frac{1}{2}$ d.
$\frac{7}{16}$ " thick	8 $\frac{1}{2}$ d.	9 $\frac{1}{2}$ d.	10 $\frac{1}{2}$ d.	11d.	11 $\frac{1}{2}$ d.	1/-	1 0 $\frac{1}{2}$	1 1 $\frac{1}{2}$

When ordering, will Agents please state diameter of wheel, outer rim to outer rim.

Note.—14lb. lots, **11d.** per lb. 28lb. lots, **10d.** per lb.

PRAM TYRES. Best Quality for Best Work. Grey only.

Size of Wheel	6"	7"	8"	9"	10"	11"	12"	13"	14"
Price per Tyre—									
$\frac{3}{8}$ " thick	2d.	3d.	3d.	3 $\frac{1}{2}$ d.	4d.	4 $\frac{1}{2}$ d.	4 $\frac{1}{2}$ d.	5d.	5d.
$\frac{1}{2}$ " thick	3 $\frac{1}{2}$ d.	4 $\frac{1}{2}$ d.	5d.	5 $\frac{1}{2}$ d.	6d.	6 $\frac{1}{2}$ d.	6 $\frac{1}{2}$ d.	7d.	7 $\frac{1}{2}$ d.
$\frac{7}{16}$ " thick	—	—	—	—	—	—	8d.	9d.	9 $\frac{1}{2}$ d.

Size of Wheel	16"	18"	20"	22"	23"	24"	25"	26"
Price per Tyre—								
$\frac{1}{2}$ " thick	8d.	10d.	11d.	1/-	1/-	1/1	1/2	1/3
$\frac{7}{16}$ " thick	11d.	1/1	1/2	1/3	1/3	1/4	1/5	1/6

When ordering, will Agents please state diameter of wheel, outer rim to outer rim.

Note.—14lb. lots, **1/6** lb. 56lb. lots, **1/5** per lb

TRADE CASH PRICES.

NOTE ADDRESS :

YORKSHIRE RUBBER CO., 20, Boar Lane, LEEDS.

PRAM TYRING. Wired-on.

Yorkshire Rubber Co.'s $\frac{1}{2}$ "	$\frac{9}{16}$ "	per lb.	1/2			
" Goodrich," $\frac{1}{2}$ "	$\frac{9}{16}$ "	$\frac{5}{8}$ "	$\frac{3}{4}$ "	$\frac{7}{8}$ "	"	1/4$\frac{1}{2}$

PRAM WIRE, Strong Crimped.

for fixing Wired Pram Tyring 80ft. coils, per coil **1/-**

BORON COMPO, the original brazing flux per lb. **7d.**

BRAKE BLOCKS.

Rubber	per doz. (singles)	6d.
Fibre, recommended	" "	6d.
Asbestos	" "	6d.

For Bowden, Crabbe, and Vox Populi Brakes.

CANVAS, Prepared, in rolls 90"×9", No. 1 quality, per roll **11d.**

" " " " Best quality, per roll **1/2**

CARBIDE (Gross lots, assorted).

" Standard " quality, per doz., $\frac{1}{2}$ lb. tins, **2/4 $\frac{1}{2}$** , 1lb. tins, **3/4**

" Chemico " quality, per doz., $\frac{1}{2}$ lb. tins, **2/7 $\frac{1}{2}$** , 1lb. tins, **3/11 $\frac{1}{2}$**

CEMENT, for fixing Pram or Cushion Tyres, &c.

3d. boxes	per doz.	10d.
6d. boxes	"	1/5$\frac{1}{2}$
" Tourist," 1lb. boxes	"	5/-
" Chemico," 1lb. boxes	"	7/-

CEMENT (LIQUID), for cold fixing.

" Pramfix," Per doz.	2d. tubes,	1/2$\frac{1}{2}$,	4d. tubes,	2/5
"	$\frac{1}{2}$ lb. tins	each	8d.
"	1lb. tins..	"	1/2$\frac{1}{2}$

CHALK, FRENCH, 1d. boxes, **7d.** per doz. 1lb. tins, per doz. **2/-**

CYCLE HOLDALLS, fasten on to handle bars or back of saddle each **2/3**

A most useful Waterproof "roll up" Holdall for holiday jaunts. Smart Tweed Patterns.

ENAMEL, BLACK. " Tourist," per doz. 4d. size, **1/6**, 6d. size, **2/1**

" " " Chemico, per doz... .. 6d. size, **3/2**

FRAME PROTECTORS. Rubber covered per doz. **2/-**

GAS BAGS. For Acetylene Lamps. Best quality only.

Size 2"×2 $\frac{1}{2}$ "	2 $\frac{1}{4}$ "×3 $\frac{1}{4}$ "	2 $\frac{1}{2}$ "×3 $\frac{1}{2}$ "	3"×4"	3 $\frac{1}{2}$ "×4 $\frac{1}{2}$ "	3 $\frac{1}{2}$ "×5"
Each 8d.	9d.	10d.	1/-	1/2	1/3

TRADE CASH PRICES.

NOTE ADDRESS :

YORKSHIRE RUBBER CO., 20, Boar Lane, LEEDS.

GLUE, "Prouts."	Very useful for many general purposes. Will adhere with greatest tenacity to wood, stone, glass, ivory, porcelain, leather, felt, parchment, paper, woollen, cotton, cloth	1d. sticks, per gross	9/-
HANDLE FIX.	"Chemico." 1lb. tins	each	1/-
INFLATORS, PLATED.	Per doz. 15 × $\frac{5}{8}$ "	8/-.	15 × $\frac{3}{4}$ " 9/-.
,"	CELLULOID.		15 × $\frac{11}{16}$ " 13/-.
INFLATOR TUBING.	Best	per yard	6d.
INFLATOR CONNECTIONS.	No. 1	per doz.	1/2
	Best	"	1/8
INFLATOR WASHERS,	Leather. Assorted sizes, $\frac{1}{2}$ ", $\frac{5}{8}$ ", $\frac{3}{4}$ ",	per half gross box	1/4
LACQUER, TRANSPARENT.	"Chemico" 6d. pots, per doz.		3/9½
LAMP WICKS.	3d. boxes, $\frac{1}{2}$ ", $\frac{5}{8}$ ", $\frac{3}{4}$ " widths	per doz.	10d.
MASTICATED PARA.	Prices on application.		
NON-SLIPPING BANDS.	Best Quality only.		
	File or Basket Pattern, $1\frac{1}{2}$ " wide	each	1/6
	" " " 2" wide	"	1/11
OIL.	Searchlight (Burning). 6d. tins	per doz.	3/-
	Non-Clog (Lubricating) "	"	2/10
	Searchlight or Non-Clog. 1d. bottles.	"	7½d.
PATCHING RUBBER.	No. 1 quality	per square foot	9d.
	" " Best quality	" "	1/-
	" " Canvas Backed, 3" wide	per yard	1/8
PEDAL RUBBERS.	4 or 8 to set	per set.	6d.
PETROLEUM JELLY.	A real Anti-Rust. 1d. tins, per doz.		7d.
	$\frac{1}{4}$ lb. tins. "		2/-
PUNCTURE PROOF BANDS.	"Sphinx"	each	1/8

TRADE CASH PRICES.

NOTE ADDRESS :

YORKSHIRE RUBBER CO., 20, Boar Lane, LEEDS.

REPAIR OUTFITS.

"Tourist," 4½d. size, square shape	per doz	1/11
"Chemico," 6d. size " "	"	2/10½
"Chemico," 6d. size, long shape	"	3/6
"Dunlop," 4½d. size, ordinary shape	"	2/11
"Dunlop," 6d. size, long shape	"	3/6

REPAIR BANDS. With or without Flaps.

Yorkshire Rubber Co's. Special quality, per doz., 2½" long	11d.,
5" long	1/11.
Yorkshire Rubber Co's. Best quality, per doz., 2½" long	1/6,
5" long	2/6.
Dunlop. Per doz., 2" 1/3½, 2½" 1/7½, 3" 1/7½, 4" 2/7, 5" 3/1½,	
6" 3/7½.	

RIMS, CYCLE. "Dunlop." Wired or Beaded.

Steel Rims, Bright Finish, Undrilled	per pair	1/10
" " Drilled	"	2/-
" Plated Finish, Drilled	"	3/2
" " Coloured Centres	"	3/6
" " " and lined edges	"	3/10

SOLUTION, INDIA RUBBER. (Tubes)

	1d.	2d.	3d.	6d.	size.
Yorkshire Rubber Co's	6½d.	8d.	1/-	1/9	per doz.
Chemico	7d.	11d.	1/2½	2/2½	" "
Dunlop	7d.	11d.	1/3½		" "

SOLUTION, INDIA RUBBER.**In Tins.**

	¼lb.	½lb.	1lb.	
Yorkshire Rubber Co's. No. 1 Quality.	4/6	9/-	18/-	per doz.
" " Best	6/-	12/-	24/-	" "

TYRE PAINT. Sunproof. "Chemico." 6d. tins, per doz. 2/11**" " " " 1lb. tins, per lb. 10d.****TYRE STOPPING, 6d. size, Chemico per doz., 3/7****VALVE TUBING, Black or Transparent, Best Quality only, per doz. yards 2/2****VALVE SEATINGS per doz. 8d.****VALVES. "Dunlop" " 2/-****TRADE CASH PRICES.****NOTE ADDRESS :****YORKSHIRE RUBBER CO., 20, Boar Lane, LEEDS.**

MOTOR CYCLE TYRES.

Beaded Edge only.	26"			28"		
	2"	2 $\frac{1}{4}$ "	2 $\frac{1}{2}$ "	2"	2 $\frac{1}{4}$ "	2 $\frac{1}{2}$ "
PALMER PRIVATEER. Ribbed or Rubber Studded	18/4	20/7	23/5	20/9	22/5	24/9
PRIVATEER TUBES. Ordinary	7/5	7/5	9/1	8/1	8/5	9/3
PRIVATEER TUBES. Butt Ended	8/8	8/8	10/5	—	—	—
PALMER Ordinary Fabric. Ribbed or Rubber Studded	20/6	22/10	—	23/-	24/10	—
PALMER Heavy Fabric. Ribbed or Rubber Studded	23/5	31/11	33/3	—	33/7	36/3
PALMER GORD. Improved Ribbed or Rubber Studded	26/11	36/5	38/1	28/7	38/1	41/6
PALMER TUBES. Ordinary	8/2	8/2	10/1	9/-	9/4	10/4
PALMER TUBES. Butt-ended	9/8	9/8	11/7	—	10/10	12/-

Beaded Edge only.	26"				650 x 65
	2"	2 $\frac{1}{4}$ "	2 $\frac{3}{8}$ "	2 $\frac{1}{2}$ "	
DUNLOP Side Car Cover	—	11/7	—	14/9	—
DUNLOP Side Car Cover. Extra Heavy	—	—	—	16/10	—
DUNLOP. Light Rubber Studded	16/9	20/9	—	—	—
DUNLOP. Heavy Rubber Studded	25/4	27/6	—	33/6	—
DUNLOP. Extra Heavy Rubber Studded	—	—	33/-	41/2	—
DUNLOP "Pillion." Rubber Studded	—	—	—	—	43/1
DUNLOP TUBE. Ordinary	8/2	8/2	9/10	10/1	11/-
DUNLOP TUBE. Butt-ended	9/8	9/8	11/3	11/7	12/10
WARWICK. Rubber Studded	12/4	15/2	—	—	—
WARWICK TUBE. Ordinary	6/-	6/9	—	—	—

	26"					28"					
	WIRED.					BEADED.					
	2"	2 $\frac{1}{4}$ "	2 $\frac{3}{8}$ "	2 $\frac{1}{2}$ "	2"	2 $\frac{1}{4}$ "	2 $\frac{3}{8}$ "	2 $\frac{1}{2}$ "	2"	2 $\frac{1}{4}$ "	
MICHELIN. Light	11/-	12/-	13/-	13/-	12/-	11/9	13/-	14/-	15/3	13/6	13/9
MICHELIN. Trident Heavy	—	23/6	—	25/-	—	—	24/-	—	26/6	—	—
MICHELIN Standard Plain Tread, Extra Strong	22/-	24/-	25/-	25/6	—	23/-	24/6	25/-	27/-	—	—
MICHELIN. Semelle Steel Stud	29/6	32/-	32/6	34/6	—	30/-	32/-	33/-	35/6	—	—
MICHELIN TUBE. Ordinary	7/-	7/3	8/-	7/7	7/5	7/-	7/3	8/-	7/7	7/5	7/10
MICHELIN TUBE. Butt-ended	8/6	8/9	9/6	9/1	7/10	8/6	8/9	9/6	9/1	8/11	9/4

Beaded Edge only.	26"				28"	
	2"	2 $\frac{1}{4}$ "	2 $\frac{3}{8}$ "	2 $\frac{1}{2}$ "	2"	2 $\frac{1}{4}$ "
KEMPSHALL. Light Anti-Skid ..	19/11	21/10	—	—	—	—
KEMPSHALL. Heavy Anti-Skid ..	26/2	29/3	—	—	30/1	32/10
KEMPSHALL. Light Non-Skid ..	26/2	27/4	—	—	—	—
KEMPSHALL. Heavy Non-Skid ..	—	41/-	42/7	44/2	45/8	—
KEMPSHALL TUBE. Ordinary ..	9/5	9/9	9/9	10/7	12/1	—
KEMPSHALL TUBE. Butt-ended ..	10/7	11/-	11/-	11/9	13/4	—

Motor Cycle Tyres *(continued)*.

Beaded Edge only.	26"			28"		
	2"	2½"	2¾"	2"	2½"	2¾"
AVON. Light Weight B Ribbed	11/4	11/11	—	11/4	11/11	—
AVON. Light Weight A Rubber Stud	13/-	13/11	—	13/-	13/11	—
AVON DRUID. Rubber Studded	15/5	16/8	—	15/5	16/8	—
AVON STONEHENGE. Rubber Studded	18/4	19/7	20/11	18/4	19/7	20/11
AVON SUNSTONE. Grooved	—	33/9	37/6	—	—	—
AVON TUBES. Endless No. 1. Dome Ends 1/6 each Extra	5/7	6/1	6/7	5/7	6/1	6/7
AVON TUBES. Endless No. 2. Dome Ends 1/6 each Extra	6/5	7/-	7/7	6/5	7/-	7/7

26"

Beaded Edge only.	2"	2½"	2¾"	*3"
CONTINENTAL. Standard, Ribbed ..	16/7	20/-	21/8	27/8
CONTINENTAL. T.T. Basket or Rubber Stud	22/2	25/-	26/11	36/10
CONTINENTAL. Combination Non-Skid	—	49/4	53/-	69/10
CONTINENTAL TUBES. Ordinary ..	6/-	7/2	7/11	12/1
CONTINENTAL TUBES. Butt-ended	7/11	9/2	9/10	14/-

26"

28"

Beaded Edge only.	2"	2½"	2¾"	2"	2½"	2¾"
BATES. Light Ribbed	21/3	22/3	—	—	—	—
BATES. Medium Rubber Studded	27/3	28/9	32/-	28/3	29/9	33 -
BATES No. 1 Pattern, Medium	29/3	31/-	36/6	—	—	—
BATES. No. 1 Pattern, Special Heavy	—	37/3	43/1	—	—	—
BATES TUBES. Ordinary ..	7/-	7/6	8/9	7/9	8/3	9/6
BATES TUBES. Butt-Ended ..	8/6	9/-	10/3	9/3	9/9	11/-
BATES HEAVY TUBES. Ordinary	9/3	10/-	11/9	—	—	—
BATES HEAVY TUBES. Butt-Ended	11/3	12/-	13/9	—	—	—

26"

Beaded Edge only.	2½"	2¾"	3"
SKEW. Plain Tread	25/1	28/6	—
SKEW. Round Ants-Skid	31/11	38/-	—
SKEW. Anti-Skid, Extra Strong	—	42/7	—
SKEW. Square Heavy Non-Skid	38/-	44/6	52/2
SKEW TUBES. Plain	9/11	11/5	13/4
SKEW TUBES. Butt-Ended	11/10	13/4	15/8

Motor Cycle Tyres *(continued).*

26"

Beaded Edge only.	2"	2 $\frac{1}{4}$ "	2 $\frac{3}{8}$ "	2 $\frac{1}{2}$ "
CLINCHER B. Rubber Studded ..	14/11	19/6	—	—
CLINCHER De LUXE. Rubber Studded ..	—	28/1	32/3	34/2
CLINCHER DREADNOUGHT. Rubber Studded ..	—	40/5	—	42/9
CLINCHER B TUBES. Ordinary ..	6/-	6/8	—	—
CLINCHER DREADNOUGHT TUBES. Ordinary ..	—	8/1	8/1	9/11

BUTT ENDED TUBES. B Quality or Dreadnought 1/5 each extra.

26"

Beaded Edge only.	2"	2 $\frac{1}{4}$ "	2 $\frac{1}{2}$ "	650 × 65
SPENCER MOULTON. Light Ribbed	—	19 6	22 6	—
SPENCER MOULTON. Heavy Ribbed	30/-	31 4	33 5	32 8
SPENCER MOULTON. Three Ribbed	33 9	35 8	37 9	45 9
SPENCER MOULTON. Steel Studded	—	40 6	45 5	53 3
SPENCER MOULTON TUBES Ordinary	9/-	9 5	9 9	—

MOTOR CYCLE RIMS. Dunlops.

Beaded Edge.	26" or 28" × 2"	26" or 28" × 2 $\frac{1}{4}$ "	26" or 28" × 2 $\frac{1}{2}$ "
BRIGHT .. per pair	4/-	4/-	4/-
PLATED AND DRILLED	6/-	6/-	6/-

MOTOR CYCLE BELTS.	Size	$\frac{5}{8}$ "	$\frac{3}{4}$ "	$\frac{7}{8}$ "	1"	1 $\frac{1}{8}$ "
Dunlop. Rubber	per foot	1 2	1 5	1 7	1 9 $\frac{1}{2}$	2 2
Whittle. Leather	" "	2 2 $\frac{1}{2}$	2 5	2 9 $\frac{1}{2}$	3 2 $\frac{1}{2}$	3 5
Lyso. Rubber	" "	1 1	1 3	1 7	1 9 $\frac{1}{2}$	2 1
Avon. Rubber	" "	1/-	1 2	1 4 $\frac{1}{2}$	1 7 $\frac{1}{2}$	1 11
New "Bates." Rubber	" "	1 0 $\frac{1}{2}$	1 2 $\frac{1}{2}$	1 5	1 9	2 1

"PATCHQUICK" PATCHES. "The Patch that won't come off."

	Size 1.	Size 2.	Size 3.	Size 4.	Size 5.	Size 6.
Oval	11d.	1 2	2 5	3 7	6/-	9 7
	per doz.	per doz.	per doz.	per doz.	per doz.	per doz.
Oblong	1 2	2 5	3 7	4 10	6/-	7 3
	per doz.	per doz.	per doz.	per doz.	per doz.	per doz.
Square	1 10	3 7	5 5	7 3	10 9	14 5
	per doz.	per doz.	per doz.	per doz.	per doz.	per doz.
Rectangular	3/-	6/-	9/-	12/-	15/-	18/-
	per doz.	per doz.	per doz.	per doz.	per doz.	per doz.

"PATCHQUICK" SOLUTION.

6d. Tubes, 3 8 per doz.; 1/- Tubes, 8/- per doz.

9d. Tins, 5 5 per doz.; 1 6 Tins, 10 10 per doz.

OUTFITS, MOTOR CYCLE—3/- size, 1 10 each; 5 9 size, 3 6 each.

OUTFITS, MOTOR CAR—10 6 size, 6 4 each.

MOTOR TYRES AND TUBES.		Large Stocks.	Keen Discounts.
DUNLOP	Motor Tyres.	CONTINENTAL	Motor Tyres.
PALMER	"	LEYLAND	"
MICHELIN	"	SIRDAR	"
MOSELEY	"	CLINGER	"
GOODRICH	"	VICTOR	"
KEMPSHALL	"	WOOD-MILNE	"
AVON	"	PIRELLI	"
SKEW	"	SPENCER MOULTON	"

MOTOR COVER RETREADS. MOTOR TUBE REPAIRS.

WASTE RUBBER. Best Prices given for Tyres and Tubes.

WATERPROOF CYCLING CAPES AND PONCHOS.

No.		Long	each
120	Grey Electric Proof Cycle Ponchos	36"	2/9
121	" " Capes	36"	3/3
122	Fawn Paramatta Cycle Ponchos	36"	3/6
123	" " " "	39"	3/9
124	" " Capes	36"	4/3
125	" " " "	39"	4/6
126	Dark Grey Tweed Cycle Ponchos	36"	3/6
127	" " " "	39"	3/9
128	" " Capes	36"	4/3
129	" " " "	39"	4/6
130	Superior Fawn or Olive Tweed Ponchos ..	36"	5/6
131	" " " "	39"	5/9

Leather Straps for fastening Cycle Capes to Handle Bar
or Saddle Seat.. .. per doz. pairs **4/6**

WATERPROOF CYCLING OVERALLS.

No.	Also suitable for Motor Cyclists' use.	To button from knee to ankle.	To clasp.
300	Black Proof	5/6	6/3
301	" extra strong, recommended	6/9	7/6
302	Single Texture, Fawn Paramatta	6/9	7/6
303	Double " " recommended	7/6	8/6
304	Single Texture, Grey Tweed	5/6	6/6
305	Double " " recommended	7/6	8/6
306	Double Texture, Fawn Paramatta, Fine quality, recommended	9/6	10/9

NOTE ADDRESS :

YORKSHIRE RUBBER CO., 20, Boar Lane, LEEDS.

WATERPROOF MOTOR CYCLE SUITS.

Guaranteed.

- 250 **Jackets.** Fawn Paramatta Cloth. Double Breasted,
Wind Cuffs. Throat Tab. Lengths, 36" and 38".
Chests, 38", 40", 42", 44"each **13/9**
- 251 **Overalls.** To match. Shaped from Knee to Ankle,
with Gusset **7/3**
Our Special Line. **21/-** the Suit.
- 252 **Jackets.** Fawn Paramatta Cloth. Double Breasted.
Wind Cuffs. Throat Tab. Lengths, 36" and 38".
Chests, 38", 40", 42", 44"each **16/6**
- 253 **Overalls.** To match, Shaped from Knee to Ankle
and with Gusset per pair **7/6**
- 254 **Jackets.** Superior Fawn Paramatta Cloth. Double
Breasted. Wind Cuffs. Throat Tabeach **21/-**
- 255 **Overalls.** To match. Semi-breeches, protecting the
Stomach. Shaped from Knee to Ankle. per pair **12/6**
- 256 **Jackets.** Stout Brown Twill. Untearable. Double
Breasted. Wind Cuffs. Throat Tab. Lengths, 36"
and 38". Chests, 38", 40", 42", 44"each **23/6**
- 256a **Semi-Breeches** to match. Shaped from knee to ankle **16/6**
- 257 **Overalls.** To match. Shaped from Knee to Ankle.
This Line strongly recommended. per pair **12/6**
- 258 **Jackets.** With Storm Flap. Stout Brown Twill, Un-
tearable. Double Breasted. Wind Cuffs. Throat
Tab. Lengths, 36" and 38". Chests, 38", 40", 42", 44" **26/6**
- 259 **Overalls.** To match. Semi-Breeches, protecting the
Stomach. Shaped from Knee to Ankle. per pair **16/6**
- Note.**—Jackets or Overalls can be purchased separately.

LEATHER MOTOR CLOTHING

Superior Make and Finish.

- 500 Brown or Dark Grey Frieze Motor Coats. Basil
Leather Lined throughout. Lengths, 48".
Chests, 38", 40", 42", 44". Splendid Seller **39/-**
- 501 Brown or Dark Grey Frieze Motor Coats.
Chrome Tan Leather Lined throughout.
Lengths, 48". Chests, 38", 40", 42", 44".
Largely sold. Strongly recommended **47/6**

GENERAL MANUFACTURES OF OUR MILLS.

502 Black, Brown, Leather Gauntlet Gloves, **5/6, 6/6, 7/3, 8/6**
LINERS, MOTOR CYCLE each **7/6**
MOTOR GOGGLES. Rubber, **1/2**; Leather, **1/11**; Leather Super, **2/6**
MOTOR GAITERS with Leather Thongs.
 65/85 m/m, **3/6** each. 90/105 m/m, **5/-** each.
 110/125 m/m, **6/9** each.

Should be carried by every Motorist.

MOTOR WINGED PLASTERS.

This inside **GAITER** is a proofed canvas patch, designed to insert between the Air Tube and Tyre Cover.

 65/80 m/m, **8d.** each. 100/105 m/m, **1 9** each.
 85/90 m/m, **1/1** each. 120/125 m/m, **2/2** each.

“Save many burst Tubes.”

MOTOR CANVAS. Stout. In rolls, 90"×12" .. per roll **3/-**

WATERPROOF MOTOR PONCHO COATS.

Superior Fawn or Black Paramatta **32/-**
 " " " Double wrap over Chest **37/6**

WATERPROOF UMBRELLA COATS.

Fitted with Patent Rubber Neck Collar.

Fawn or Black Paramatta **26/6**
 " " " Superior quality **37/6**

WATERPROOF KNEE LEGGINGS OR THIGH TOPS.

For Shooting, etc.

		To pull on.	To fasten down side.
100	Black Rubber Proof	2/11	3/11
101	Black Rubber Proof, extra strong, recommended	3/11	5/3
102	Single Texture Tweeds, Fawn or Grey	4/-	4/6
103	Single Texture, Fawn Paramatta	4/-	4/6
104	Double Texture Tweeds, Fawn or Grey, Recommended	5/3	6/6
105	Double Texture, Fawn Paramatta, Recommended	5/3	6/6

WATERPROOF OVERALLS. To pull on.

For Walking and Outdoor Work.

200	Black Proof	per pair	4/6
201	Black Proof, Extra Strong, Recommended	"	5/9
202	Single Texture, Fawn or Black Paramatta	"	4/6
203	Double Texture, Fawn or Black Paramatta, Recommended	"	6/6
204	Single Texture, Fawn or Grey Tweeds	"	4/6
205	Double Texture, Fawn or Grey Tweeds, Recommended	"	6/6

GENERAL MANUFACTURES OF OUR MILLS.

GENTS' WATERPROOF COATS

	Retail	Trade
400 Gent.'s Fawn Paramatta Waterproof Coats Good Value and Guaranteed.	21/-	15/9
401 Gent.'s Grey or Fawn Tweed Waterproof Coats Serviceable.	21/-	15/9
402 Gent.'s Fawn Paramatta Waterproof Coats For Present Wear.	25/-	18/9
403 Gent.'s Blue or Black Paramatta Waterproof Coats For Mourning, Clergy use, etc.	25/-	18/9
404 Gent.'s Grey or Fawn Tweed Waterproof Coats Very Smart.	25/-	18/9
405 Gent.'s Fawn Paramatta Waterproof Coats. Very Largely Sold.	27/6	20/8
406 Gent.'s Blue or Black Paramatta Waterproof Coats Reliable.	27/6	20/8
407 Gent.'s Grey or Fawn Tweed Waterproof Coats Strong and Serviceable.	27/6	20/8
408 Gent.'s Fawn Paramatta Waterproof Coats A Leading Line. Very largely sold.	30/-	22/6
409 Gent.'s Grey or Fawn Tweed Waterproof Coats Good Value.	30/-	22/6
410 Gent.'s Black Proof Waterproof Coats .. For Outdoor Work and Driving.	35/-	26/3
411 Gent.'s White Proof Coats For Coachmen's use.	35/-	26/3
412 Gent.'s Fawn Paramatta Waterproof Coats In great demand. Recommended.	35/-	26/3
413 Gent.'s Blue or Black Paramatta Waterproof Coats For Clergymen, etc.	35/-	26/3
414 Gent.'s Grey or Fawn Tweed Waterproof Coats Strong, Durable.	35/-	26/3
415 Gent.'s Black Proof Waterproof Coats .. Superior, for Driving or Motoring.	42/6	32/-

NOTE ADDRESS :

YORKSHIRE RUBBER CO., 20, Boar Lane, LEEDS.

GENERAL MANUFACTURES OF OUR MILLS.

416	Gent.'s Fawn Paramatta Waterproof Coats Smart inside Linings. Very Popular. Very largely sold. Recommended.	42/6	32/-
417	Gent.'s Blue or Black Paramatta Waterproof Coats A Good Coat.	42/6	32/-
418	Gent.'s Grey or Fawn Tweed Waterproof Coats Highest Grade.	42/6	32/-
419	Gent.'s Fawn Paramatta Waterproof Coats Super Quality. Largely sold.	50/-	37/6
420	Gent.'s Best White Proof Coat Superior. For Coachmen's use.	50/-	37/6

These reliable Waterproofs are manufactured at our own Works under personal supervision. Every Coat Guaranteed. When ordering please give the following measurements:—

- No. 1. Length of Coat from Collar Seam at back.
- No. 2. Chest Measure over ordinary coat (under arms).
- No. 3. Centre of Back to Shoulder Seam.
- No. 4. Shoulder Seam to Elbow.
- No. 5. Elbow to Hand.

GENTLEMEN'S RAINCOATS. No Rubber.

Our famous Rain-Resisting Hard Wear Cloths.

	Trade Prices
349 In Fawn, Olive, Green, and Brown Shades	23/6
350 In Fawn, Olive, Green, and Brown Shades	26/-
Well Recommended.	
351 In Fawn, Olive, Green, and Brown Shades	29/-
Splendid Value.	
352 In Fawn, Olive, Green, and Brown Shades	34/-
Very largely sold.	
353 In Fawn, Olive, Green, and Brown Shades	39/6
A very popular line.	
354 In Fawn, Olive, Green, and Brown Shades	47/6
Highest grade. Will last for years.	

BOYS' WATERPROOF COATS.

Superior Fawn Paramatta. Very Smart.

Lengths, 24", 26", 28", 30", 32", 34", 36", 38", 40", 41", 42", 43", 44"	14/6
Out sizes, 45", 46"	15/6

Very largely sold.

GENERAL MANUFACTURES OF OUR MILLS.

LADIES WATERPROOF COATS.

No.		Retail.	Trade
800	Fawn, Green, and Blue Paramattas	17/6	13/11
	In demand. Good Value. Guaranteed.		
801	Grey, Brown and Green Tweeds	17/6	13/11
	In demand. Good value. Guaranteed.		
802	Fawn, Green and Blue Paramattas	21/-	15/9
	Very largely sold. Very Good value. Recommended.		
803	Brown and Grey Tweeds	21/-	15/9
	Neat Designs.		
804	Fawn and Green Paramattas	25/-	18/9
	Serviceable. Reliable. Largely sold. Recommended.		
805	White Rubber Proof	25/-	18/9
806	Grey Tweeds	25/-	18/9
	Smart Patterns.		
807	Green, Brown, and Black and White Checks	27/6	20/8
	Very Stylish.		
808	Black Paramatta	27/6	20/8
	For Mourning.		
809	Fawn and Green Paramattas	27/6	20/8
	Splendid value. Very largely sold. Much recommended.		
810	Slate Blue Paramattas	27/6	20/8
	For present wear.		
811	Brown Tweeds	30/-	22/6
	Serviceable.		
812	Green, or Fawn Striped Tweeds	35/-	26/3
	Stylish.		
813	Green, Fawn, and Blue Paramattas	35/-	26/3
	High grade. Splendid wearer. Recommended. Largely sold.		
813a	Green and Fawn Striped Paramattas ..	35/-	26/3
	Very Stylish. As now worn.		
814	White Rubber Proof Coats	35/-	26/3
	Super quality.		
815	Green, Fawn, and Brown Paramattas ..	42/6	31/11
	In demand. Strongly recommended.		
816	Brown and Fawn Tweeds	42/6	31/11
817	Green, Grey, Blue and Light Fawn Corded Silks	42/6	31/11

GENERAL MANUFACTURES OF OUR MILLS.

LADIES' WATERPROOF COATS *(continued)*.

	Retail.	Trade.
818 Grey and Green Silks	50/-	37/6
819 Light Fawn, Grey, and Olive Green and Blue Silks	63/-	47/3

Every coat guaranteed.

When ordering please give following measurements:—

No. 1. Length from centre of Collar to bottom of Coat.

No. 2. Round Bust, over ordinary Coat (under arms).

No. 3. Centre Back to Shoulder Seam.

No. 4. Shoulder Seam to Elbow.

No. 5. Elbow to Hand.

N.B.—We make all necessary allowances.

LADIES' RAINCOATS. No Rubber.

In our Famous Rain-Resisting Hard Wear Cloths.

		Trade Prices.
850 Green and Fawn Tweed Cloths Special Line.		16/11
851 Green, Fawn and Grey Tweed Cloths Most serviceable.		19/11
852 Green and Fawn Cloths Recommended.		22/6
853 Fawn and Brown Tweed Cloths Smart and easy fitting.		23/6
854 Fawn and Green Cloths Largely sold.		25/11
855 Fawn Cloths For present wear.		27/6
856 Fawn and Green Cloths In demand. Recommended.		35/-
857 Fawn and Green Striped Cloths Super Quality.		42/6
858 Fawn and Green Cloths Highest grade.		50/-

MISSES' WATERPROOF COATS.

Sizes in length 24" 27" 30" 33" 36" 39" 42" 45" 48"

No. 900.

Fawn Paramatta .. 8/1 8/5 8/11 9/3 9/9 10/6 11/6 12/4 13/2

No. 901.

Superior Fawn

Paramatta .. 8/11 9/9 10/6 11/6 12/4 13/2 13/6 14/- 14/11

NOTE ADDRESS :

YORKSHIRE RUBBER CO., 20, Boar Lane, LEEDS.

GENERAL MANUFACTURES OF OUR MILLS.

MISSES' WATERPROOF CAPES. With Silk Lined Detachable

Hoods.											
Sizes in length ..		24"	27"	30"	33"	36"	39"	42"	45"	48"	
No. 902	Fawn Paramatta ..	8/5	8/11	9/3	9/9	10/6	11/6	12/4	13/2	14/-	
No. 903.	Superior Fawn Paramatta ..	8/11	9/9	10/6	11/6	12/4	13/2	13/6	14/-	14/11	

WATERPROOF CARRIAGE APRONS.

No.	For Driving and Motoring.	
600	Good Rubber Proof. Lined Tartan Check, fitted with plated boss for strap, size 5ft. × 4ft.	8/6
601	Good Rubber Proof. Lined President Cloth, colours Blue, Green, and Brown, fitted with plated boss for strap, size 5ft. × 4ft.	9/6
602	Superior Rubber Proof. Lined Blue Check Kersey or Red Check Kersey, fitted with plated boss for strap, size 5ft. × 4ft. For Hard Wear.	11/6
603	Superior Rubber Proof. Lined Fancy Seal, fitted with plated boss for strap, size 5ft. × 4ft.	12/6
604	Superior Rubber Proof. Lined President Cloth. Colours, Blue, Green and Brown, fitted with plated boss for strap, size 5ft. × 4ft.	13/3
605	Best Rubber Proof. Lined President Cloth. Colours, Blue, Green and Brown, fitted with plated boss for strap, size 5ft. × 4ft. Very serviceable.	14/-
606	Best Rubber Proof. Lined Superior Fancy Seal, fitted with plated boss for strap, size 5ft. × 4ft. Recommended.	16/6
607	Best Rubber Proof. Lined Superior President Cloth, Colours, Blue, Green and Brown, fitted with plated boss for strap, size 5ft. × 4ft. As sold largely for many years.	18/6
608	Best Melton Cloth. Colours, Blue, Green and Brown, lined Wool Checks, fitted with plated boss for strap, size 5ft. × 4ft. Most serviceable.	18/9

NOTE ADDRESS :

YORKSHIRE RUBBER CO., 20, Boar Lane, LEEDS.

GENERAL MANUFACTURES OF OUR MILLS.

WATERPROOF CARRIAGE APRONS *(continued)*.

No.

609 **Best Rubber Proof.** Lined best Fancy Seal, fitted with plated boss for strap, size 5ft. × 4ft. **20/6**
Thoroughly Reliable.

610 **Best Rubber Proof.** Lined Super Fancy Seal, fitted with plated boss for strap, size 5ft. × 4ft. **24/6**
The very best made.

Note.—These Carriage Aprons are manufactured at our own Mills, and have been supplied largely to the Trade for many years. The proofing is reliable; the finish and workmanship are of the best description.

INDIA RUBBER MATS. Best Quality. **1/3** per lb.

Made to any measurement, sketch, shape, or design, and in any thickness.

These Perforated Mats, punched from Solid Vulcanised Pressed Sheets of India Rubber are most durable. Not affected by damp and admirably adapted for **Shop Doorways, Entrance Doors to Offices and Public Buildings, Corridors, Mansion Vestibules, etc.**

INDIA RUBBER MATS. Best quality, $\frac{3}{8}$ " thick. Stock sizes. Ready for immediate delivery.

Sizes	.. 24" × 12"	24" × 15"	27" × 15"	27" × 18"	30" × 15"
Price	.. 4/6	5/3	6/3	6/9	6/6
Sizes	.. 30" × 18"	33" × 18"	33" × 21"	36" × 21"	36" × 24"
Price	.. 7/6	8/6	8/9	9/9	11/6

Lettering India Rubber Mats, 4d. per letter extra.

RUBBER MATTING. Best quality. **1/1** per lb.

In Large Pyramid pattern, Small Pyramid pattern, Fluted pattern, for **Motor Cars, Stair Treads, etc., etc.**

Very largely sold. **Samples Free.**

INDIA RUBBER HOSE. Garden Quality.

For Gardening, Horticultural, and all ordinary purposes.

Garden Hose, per foot.

Internal Diameter		$\frac{1}{2}$ "	$\frac{5}{8}$ "	$\frac{3}{4}$ "	1"
1-Ply Canvas	2d.	3d.	3½d.	4½d.
2-Ply	3d.	3½d.	4½d.	5½d.
3-Ply	3½d.	4½d.	4½d.	6½d.

Nett Trade Prices.

NOTE ADDRESS :

YORKSHIRE RUBBER CO., 20, Boar Lane, LEEDS.

GENERAL MANUFACTURES OF OUR MILLS.

Garden Hose. Special Prices per 60ft. Coils.

Internal Diameter	$\frac{3}{8}$ "	$\frac{1}{2}$ "	$\frac{5}{8}$ "	$\frac{3}{4}$ "	1"
1-Ply Canvas	7/6	8/9	11/-	13/9	18/6
2-Ply ,,	9/9	11/-	13/3	15/9	21/-
3-Ply ,,	12/-	13/3	15/9	18/6	25/6

Nett Trade Prices.

INDIA RUBBER HOSE. Delivery Quality.

For Mills, Factories, etc. Extra strong to stand rough usage.

Delivery Hose, Best Quality, per foot.

Internal Diameter	$\frac{1}{2}$ "	$\frac{5}{8}$ "	$\frac{3}{4}$ "	$\frac{7}{8}$ "	1"	1 $\frac{1}{4}$ "	1 $\frac{1}{2}$ "
1-Ply Canvas.. .. .	4d.	5d.	6d.	7d.	8d.	9d.	11d.
2-Ply ,,	5d.	6d.	7d.	8d.	9d.	11d.	1/1
3-Ply ,,	6d.	7d.	8d.	10d.	11d.	1/1	1/3
4-Ply ,,	—	—	—	—	1/-	1/3	1/5

Nett Trade Prices.

Delivery Hose. Best Quality. Special Prices per 60ft. Coil.

Internal Diam.	$\frac{1}{2}$ "	$\frac{5}{8}$ "	$\frac{3}{4}$ "	$\frac{7}{8}$ "	1"	1 $\frac{1}{4}$ "	1 $\frac{1}{2}$ "
1-Ply Canvas ..	18/2	21/11	25/8	29/5	33/9	39/5	46/11
2-Ply ,, ..	21/11	26/3	30/8	35/8	40/-	46/11	56/3
3-Ply ,, ..	26/3	31/3	36/3	41/11	46/11	55/-	65/-
4-Ply ,, ..	—	—	—	—	53/9	63/2	74/5

Nett Trade Prices.

ARMOURING. Delivery or Garden Hose.

	$\frac{3}{8}$ "	$\frac{1}{2}$ "	$\frac{5}{8}$ "	$\frac{3}{4}$ "	$\frac{7}{8}$ "	1"	1 $\frac{1}{4}$ "	1 $\frac{1}{2}$ "
Per foot extra ..	1 $\frac{1}{2}$ d.	1 $\frac{1}{2}$ d.	1 $\frac{3}{4}$ d.	2d.	2 $\frac{1}{2}$ d.	2 $\frac{3}{4}$ d.	4d.	5d.
Per 60ft. Coil extra	6/3	6/3	7/-	8/9	10/9	12/6	18/3	23/3

Nett Trade Prices.

NOTE ADDRESS :

YORKSHIRE RUBBER CO., 20, Boar Lane, LEEDS.

GENERAL MANUFACTURES OF OUR MILLS.

FITTINGS. Best Brass. For Rubber Hose.

	$\frac{1}{2}$ "	$\frac{5}{8}$ "	$\frac{3}{4}$ "	1"	
Patent Tap Union to fit any tap (push-on)	7/-	11/-	13/-	27/-	Per doz.
Tap Unions to screw on . .	8/-	11/-	16/-	22/-	"
Rose and Jet, without tap..	13/-	17/-	22/-	44/-	"
Rose and Jet, with tap. This type recommended . .	18/-	24/-	30/-	51/-	"
Nozzles, as used for Carriage and Window Washing ..	8/-	11/-	16/-	24/-	"
Unions, disconnecting, to join Hoses	8/-	11/-	16/-	22/-	"
Ferrules, non - disconnecting, for joining Hoses	1/6	2/-	3/-	4/-	"

Note.—For the convenience of customers we make the following special sizes in Patent Tap Unions to fit any tap :—

For $\frac{5}{8}$ " tap by $\frac{1}{2}$ " hose	11/-	per dozen nett.
For $\frac{3}{4}$ " tap by $\frac{1}{2}$ " hose	13/-	" "

	$\frac{1}{2}$ "	$\frac{5}{8}$ "	$\frac{3}{4}$ "	1"	
Rubber Washers for Patent Tap Unions	1/3	1/8	2/3	3/3	per doz. nett.

YORKSHIRE RUBBER CO.'S "ROLLER" HOSE REELS.

Made entirely of steel. Their "Girder" construction gives strength. These modern Reels are stronger than any other Hose Reels on the market.

Sizes	No. 0.	No. 1.	No. 2.	No. 3.	
Dimensions . .	$17\frac{1}{2} \times 6\frac{1}{2}$	$19\frac{1}{2} \times 7\frac{1}{2}$	22×9	26×11	inches.
Capacity . .	60 ft.	120 ft.	180 ft.	240 ft.	$\frac{1}{2}$ " hose
		80 ft.	120 ft.	180 ft.	$\frac{5}{8}$ " "
		60 ft.	90 ft.	150 ft.	$\frac{3}{4}$ " "
			60 ft.	120 ft.	1" "
Prices, painted	2/9	3/3	3/6	4/11	each reel.

INDIA RUBBER GAS TUBING.

Reliable quality, as sold for many years. Largely used for Gas Stoves, Magic Lantern Work, etc.

Internal diameter	$\frac{1}{4}$ "	$\frac{5}{16}$ "	$\frac{3}{8}$ "	$\frac{1}{2}$ "	
Best Red quality . .	5½d.	7d.	8d.	1/-	per yard.
Best A Grey quality	1/-	1/3	1/6	2/-	" "

Much in demand for Chemical and Laboratory requirements.

GENERAL MANUFACTURES OF OUR MILLS.

INDIA RUBBER GAS TUBING. Drab. 2-ply Canvas. For Gas Irons and Wholesale Clothiers' use. As sold for many years.

Internal diameter, $\frac{3}{8}$ " , per foot, **3½d.** ; per 60-ft. coils, **15/6.**

DRAUGHT EXCLUDER TUBING. For Windows and Doors.

	$\frac{1}{8}$ "	$\frac{3}{16}$ "	$\frac{1}{4}$ "	
Canvas Flange	2½d.	3½d.	4½d.	per yard.

In 60ft. Coils, **1/10** per lb.

	$\frac{1}{8}$ "	$\frac{3}{16}$ "	$\frac{1}{4}$ "	
Cloth Covered	3½d.	4½d.	6¼d.	per yard.

In 60ft. Coils, **2/6** per lb.

RUBBER PUSH-ONS.

For fixing on to ends of Metallic Gas Tubes, per gross, **6/-**

BEER TUBE. Solid Rubber, Guaranteed Tasteless.

For drawing beer from vaults to taps.

No. 1 Quality, inside diameter, $\frac{5}{8}$ " ..	per foot. 1/-
--	----------------------

Best Quality, do ..	,, ¼
---------------------	-------------

GAS ENGINE BAGS. Best A Grey Rubber.

Sizes	6" × 4"	8" × 4½"	10" × 6½"	12" × 8"	
	1/11	2/6	3/9	5/3	each.

FORCE CUPS. Our Reliable Make. With Handle.

For removing obstructions in Lavatories, Sinks, Baths, etc.

Small size, for Lavatories, Sinks, etc.	each 1/2
---	-----------------

Medium size, for Baths	,, 2/3
--------------------------------	---------------

SQUEE GEES. Best Rubber.

For cleaning Ship Decks, Wash-houses, Baths, Pavements, etc.

Length	12"	14"	16"	18"	20"	22"	24"
Complete with handle	2/1	2/3	2/6	3/-	4/-	5/-	5/6

RUBBER WASHERS. For Steam Joints.

Yorkshire Rubber Co.'s Best Steam Quality,	2/6 per lb.
--	--------------------

" " No. 1 ..	2/3 "
--------------	--------------

" " No. 2 ..	1/9 "
--------------	--------------

We hold large stocks in all sizes from $\frac{1}{2}$ " inside diameter to 14" diameter. Every kind of Washer made to customers' own specifications at prices quoted above. Delivery 4 to 5 days.

INDIA RUBBER SHEET. For Steam Joints, etc.

Thicknesses, $\frac{1}{8}$ " , $\frac{3}{16}$ " , $\frac{1}{4}$ "	per lb., 2/-
---	---------------------

INDIA RUBBER INSERTION SHEET For Joints, Packing, &c.

Thicknesses, $\frac{1}{16}$ " , $\frac{1}{8}$ " , " .. $\frac{3}{16}$ "	per lb., 1/3
---	---------------------

INDIA RUBBER BELTING. Ask for Samples and Prices.

PRINTERS' BLANKETS. Reliable Qualities. Keen Quotations.

GENERAL MANUFACTURES OF OUR MILLS.

RUBBER WASHERS. For Water Pipe Joints.

Special quality, 2/- per lb.

RUBBER PLUGS. For Baths and Wash Basins.

Size at bottom $\frac{3}{4}$ " $\frac{7}{8}$ " 1" $1\frac{1}{8}$ " $1\frac{1}{4}$ " $1\frac{3}{8}$ " $1\frac{1}{2}$ " $1\frac{3}{4}$ " 2" $2\frac{1}{4}$ "

2/6 3/- 3/6 4/- 4/6 5/- 5/6 6/- 6/6 7/- doz.

GUTTA PERCHA SHEET. per lb. **3/6**

WRINGER ROLLERS. Covered with Best Rubber.

Price	Diam.	10" to 11"	12"	13"	14"	15"	16"
Per Roller.	1 $\frac{1}{2}$ "	3/3	3/6	3/9	4/3	4/6	4/9
"	1 $\frac{5}{8}$ "	3/6	3/11	4/3	4/6	4/9	5/-
"	1 $\frac{3}{4}$ "	4/3	4/6	4/11	5/-	5/6	6/3
"	1 $\frac{7}{8}$ "	4/9	4/11	5/3	5/9	5/11	6/6
"	2"	5/-	5/6	5/9	5/11	6/3	6/11

Nett Trade Prices. Above prices are keen cut.

We have extensive plant for dealing with this class of work.

All spindles covered and returned within seven clear days.

INDIA RUBBER GLOVES. For Dye-Houses, Chemical Works, and Electrical purposes.

Standard quality per pair, **7/6**

Extra stout " **8/6**

" " Tested and stamped for 10,000 volts " **9/-**

INDIA RUBBER GLOVES. For Housemaids' use.

Special Red Rubber " **1/11**

Best quality " **2/9**

INDIA RUBBER FINGER STALLS. Best quality, per doz., **1/8**

FOOTBALL BLADDERS. Finest Red Quality. Guaranteed.

	Sizes	1	2	3	4	5
Per dozen		9/-	12/-	14/-	15/-	16/-
Per lb.		7/-	7/-	7/-	7/-	7/-

For Rugby or Association Codes. **Nett Trade Prices.**

INDIA RUBBER HOT WATER BOTTLES.

Sizes 10" x 6" 10" x 8" 12" x 8" 11" x 8" 12" x 10" 14" x 10"

Best quality	3/6	3/11	4/9	5/6	5/11	7/3 each.
No. 1 "	3/-	3/5	3/9	4/2	4/4	5/- "

DR. R. WALLACE states :—" For insomnia and cold feet I strongly advise their use." Another eminent Doctor writes :—" The friend of man and woman. No one ought to have cold feet, and if they suffer from them they ought to invest in a Hot Water Bottle. Sleep is produced by the blood leaving the brain, and the warm feet induced by the use of these Hot Water Bottles banishes insomnia."

GENERAL MANUFACTURES OF OUR MILLS.

WATERPROOF BED SHEETING.

As supplied to the leading Infirmeries, Hospitals and Nursing Homes.

Drab Waterproof Bed Sheeting.

Proofed one side, good quality	36" wide	..	per yard,	1/9
Superior, proofed one side	.. 36" wide	..	"	2/-
Proofed both sides, largely sold	36" wide	..	"	2/3
Superior, proofed both sides	36" wide	..	"	3/3

WATERPROOF BED SHEETS. Turned over edges ready for use.

Sizes in inches	.. 36 × 27	36 × 36	36 × 48	36 × 54	36 × 60	36 × 72
Proofed both sides	2/6	3/6	4/6	5/3	6/3	7/3

Very suitable for Invalid and Accouchement use.

WATERPROOF NURSING APRONS.

No. 10	Black and White Star Check	..	28" × 24"	..	each	11d.
No. 11	" " "	..	28" × 27"	..	"	1/3
No. 12	" " " Superior	..	29" × 27"	..	"	1/9
No. 13	" " " extra thick	..	29" × 29"	..	"	2/6
No. 14	Single Texture Tweeds	30" × 24"	..	"	1/1
No. 15	" " Black Paramatta	36" × 24"	..	"	1/4
No. 16	Double Texture Tweed	30" × 24"	..	"	1/8
No. 17	" " " " "	36" × 30"	..	"	2/6
No. 18	" " Black Paramatta	36" × 24"	..	"	1/11
No. 19	" " " " "	36" × 36"	..	"	2/9

This line also sold largely for Hotel use.

WATERPROOF PILCHES FOR CHILDREN.

Fine Fawn Cambric, small, **1/1**; medium, **1/3**; large, **1/6** each

WATERPROOF CHILD'S BIBS.

Black and White Check	No. 1 size	..	per dozen,	5/-
" "	No. 2 "	..	"	6/6
Fancy Coloured Checks	No. 1 "	..	"	8/-
" "	No. 2 "	..	"	9/-

WATERPROOF BATHING CAPS.

Black and White Checks	per dozen,	5/6
Fancy Sheeting	"	9/6
Green Silk Oilskin	"	12/-
Red Rubber, Helmet shape.	Very largely sold	"	21/-
Red Rubber, with Stockinette Band.			
Helmet shape. Recommended		"	24/-

NOTE ADDRESS :

YORKSHIRE RUBBER CO., 20, Boar Lane, LEEDS.

GENERAL MANUFACTURES OF OUR MILLS.

WATERPROOF PADDLERS. For Seaside. Best Quality.

	Size 2	3	4	5
Boys', Star Check per pair	1/7	1/10	2/-	2/3
Girls', Star Check, with Bib ..	1/10	2/-	2/3	2/7

WATER WINGS. Best Quality per dozen, 9/6

With them anyone can Swim or Float. Supports from 50 to 250 lbs.
Weighs 3 ounces. Takes up no more room than a pocket handkerchief.

N.B.—Water Wings are an adaptation of and improvement on the old-fashioned Swimming collar. An aid of this character is of the greatest assistance in learning to swim, the movements necessary to float and propel the body being acquired more easily and perfectly when a little mechanical assistance is utilised in the early stages.

WATERPROOF SPONGE BAGS.

	6½" × 6" 7½" × 7"	8½" × 8" 9½" × 9"	10½" × 10"	11½" × 11"		
Black and White Check						
Sheeting	5d.	6d.	8d.	9d.	11d.	1/2
Black and White Check Twill,						
Best Quality	—	8d.	9d.	11d.	1/2	—
Fancy Coloured Check						
Sheeting	6d.	8d.	9d.	11d.	1/2	1/4
Striped Zephyr Sheetting	—	9d.	11d.	1/2	1/4	1/6
Coloured Poplin	—	11d.	1/2	1/4	1/6	1/9
Fancy Coloured Sheetting	—	9d.	11d.	1/2	1/4	1/6

PORTABLE BATHS. Complete with Case.

Diameter	27"	30"	33"
Each	15/11	17/9	19/9

INDIA RUBBER AIR CUSHIONS. For Invalids.

As sold for many years to Infirmaries, Nursing Institutes, etc.

Size	13"	14"	15"	16"	17"	18"
Best Red Rubber	6/9	7/6	8/6	10/-	11/6	13/3
No. 2, Red Rubber	4/9	5/6	6/3	6/9	7/6	8/3

INDIA RUBBER WATER BEDS. On Sale or Hire.

Sizes, 30" × 24", 36" × 24", 36" × 36", 48" × 36", 72" × 30", 72" × 36".

Prices on application.

WATERPROOF PIECE GOODS.

Waterproof White Jaconet, 36" wide per yard	2/3
Largely sold for Damping Sheets.	
Waterproof Tan Canvas, Stout Quality,	
60" wide	4/6
Waterproof White Wigan Sheetting, Stout Quality,	
60" wide, for Cart Covers and Saddlers' use	4/6
Waterproof Black Proof, Stout Quality,	
63" wide	4/9
Much sold for Waterproof Covers, Ground Sheets, etc.	

GENERAL MANUFACTURES OF OUR MILLS.

SURGICAL ENEMAS. With all Fittings complete.

Yorkshire Rubber Co. "Special"	each	1/8
" " No. 1, largely sold	"	2/6
" " "Standard," a good seller	"	2/11
" " "Reliable," very popular	"	3/3
" " "Best," well recommended	"	4/3
" " "Princess," very superior	"	4/6

SURGICAL ELASTIC HOSIERY. Best Quality.

For Sprains and Varicose Veins.

Elastic Anklets.	Elastic Kneecaps.	Elastic Leggings.	Elastic Stockings.
Each 1/10	2/-	2/3	2/9

As sold for many years.

SURGICAL ELASTIC WEBBING.

For Sprains and Varicose Veins.

2½" broad, 6d. per yard; 3" broad, 8d. per yard.

SURGICAL ELASTIC WEBBING. Extra Stout.

2"	2½"	3"	4"	5"	6"
6d.	8d.	1/2	1/9	2/6	2/9

per yard.

The extra stout quality also very suitable for Body Belts.

CRUTCH PADS. Best Quality.

Sizes ..	¾"	7/8"	1"	1 1/8"	1 1/4"
	1/1	1/4	1/7	1/9	2/- each.

INDIA RUBBER INSTEP PADS. For Flat Feet. Per pair, 9d.

RUBBER SPONGES. Best Make Only.

Sizes ..	1	2	3	4	5	6
	8d.	1/-	1/2	1/6	2/2	3/- each.

INDIA RUBBER CASH MATS. Circular.

Diameter ..	6"	9"
Black Quality	6/6 ..	8/6 per dozen.
Red Quality	7/- ..	10/6 ..

RUBBER HEEL DEPARTMENT.

REVOLVING RUBBER HEELS.

"Oxopad."	per dozen pairs ..	2/3	Ladies' Gent.'s. 4/-
Retail Price, Ladies' 4½d., Gent.'s 6½ per pair.			
A very Popular Line and Largely sold.			

NOTE ADDRESS :

YORKSHIRE RUBBER CO., 20, Boar Lane, LEEDS.

GENERAL MANUFACTURES OF OUR MILLS.

REVOLVING RUBBER HEELS *(continued)*.

	Ladies'.	Gents'.
"Army Star" per dozen pairs . .	3/-	5/-
Retail price, Ladies' 6d., Gent.'s 9d. per pair.		
In great demand. Recommended.		
"Wood Milne." Special Quality. Per doz. pairs	6/6	8/6
One of the best Heels on the market.		
Retail price, Ladies' 1/-, Gent.'s 1/3 per pair.		

Revolving Rubber Heels,

Ladies' sizes, 1 $\frac{3}{8}$ " , 1 $\frac{1}{2}$ " , 1 $\frac{5}{8}$ " , 1 $\frac{3}{4}$ " , 1 $\frac{7}{8}$ ".

Gent.'s sizes, 2" , 2 $\frac{1}{8}$ " , 2 $\frac{1}{4}$ " , 2 $\frac{3}{8}$ " , 2 $\frac{1}{2}$ " , 2 $\frac{5}{8}$ " , 2 $\frac{3}{4}$ ".

STATIONARY RUBBER HEELS.

"Wood Milne." Stationary per dozen pairs	5/10	9/9
Retail price, Ladies' 9d., Gent.'s 1/3 per pair.		
"O'Sullivan." Per dozen pairs	7/-	11/6
Retail price, Ladies' 1/-, Gent.'s 1/6 per pair.		
"O'Sullivan." Thick. . . Per dozen pairs . .	8/3	12/9
Retail price, Ladies' 1/-, Gent.'s 1/6 per pair.		

Stationary Rubber Heels.

Ladies' sizes, 1 $\frac{3}{8}$ " , 1 $\frac{1}{2}$ " , 1 $\frac{5}{8}$ " , 1 $\frac{3}{4}$ " , 1 $\frac{7}{8}$ ".

Gent.'s sizes, 2" , 2 $\frac{1}{8}$ " , 2 $\frac{1}{4}$ " , 2 $\frac{3}{8}$ " , 2 $\frac{1}{2}$ " , 2 $\frac{5}{8}$ " , 2 $\frac{3}{4}$ ".

RUBBER HEEL TIPS.

	Small.	Medium.	Large.
Per dozen pairs . .	2/-	2/3	2/6
Retail price, 6d. per pair, all sizes.			

SAND SHOES AND PLIMSOLLS.

	Child's.	Misses'.	Women's.
Sizes	4 to 9	10 to 2	3 to 9
Grey Plimsolls per pair	1/-	1/3$\frac{1}{2}$	1/7
Brown Sand Shoes ,,	1/-	1/3$\frac{1}{2}$	1/7
White Gymnastic Shoes ,,	11$\frac{1}{2}$d.	1/2$\frac{1}{2}$	1/5$\frac{1}{2}$

As sold for many years to leading Boot Stores in the United Kingdom.

White Gymnastic Boots per pair	3/-
Laced Fronts, Lined. For Boating, Boxing, Cricket, Tennis, etc.	

NOTE ADDRESS :

YORKSHIRE RUBBER CO., 20, Boar Lane, LEEDS.

RUBBER FOOTWEAR.

	Sizes.	Per pair.
Child's Overshoes, Special	4 to 9	1/2 ¹ / ₂
Child's " Best	4 to 9	1/6 ¹ / ₂
Misses' " Special	10 to 2	1/4 ¹ / ₂
Misses' " Best	10 to 2	1/10 ¹ / ₂
Ladies' " Special	3 to 8	1/6
Ladies' " Best	3 to 8	2/2 ¹ / ₂
Recommended.		
Youths' Overshoes	All 1 to 5	2/7
Gent.'s " Special	6 to 12	2/3
Gent.'s " Best	6 to 12	3/3
Recommended.		
Misses' Storm Shoes, High Fronts ..	10 to 2	2/1 ¹ / ₂
Ladies' " " Special	3 to 8	1/8 ¹ / ₂
Ladies' " " Best	3 to 8	2/5 ¹ / ₂
Recommended.		
Gent.'s Storm Shoes, High Fronts ..	6 to 12	3/3
Child's Snow Boots, to Buckle	4 to 9	2/8 ¹ / ₂
Misses' " "	10 to 2	3/4
Ladies' " "	3 to 8	3/11
Gent.'s " "	6 to 12	5/5
Ladies' Rubber Footholds, Best	3 to 8	1/11
Recommended.		
Ladies' " High Fronts	3 to 8	2/1
Gent.'s "	5 to 11	2/5

LADIES' BEACON GAITER BOOTS.

Fine Black Twill Uppers, Good Rubber Soles, Black
Fleece Lined, Four Buckles, Snow Excluder,
Sizes 3 to 8 Per pair **8/2**

RUBBER BOOTS.

	Sizes.	Per pair.
Child's Wellington Boots	4 to 9	5/9
Misses' "	10 to 2	6/9

RUBBER BOOTS

	Sizes.	Per pair.
Ladies' "	3 to 8	7/9
Gent.'s "	6 to 11	13/6

GENT.'S LONG THIGH BOOTS

For Mining, Excavating, and Fishing purposes.

Nett Trade Prices.

GOLF BALLS.

"ARC" 1/- Golf Ball.	Per doz.
Manufactured from new material throughout	9/6
"CHEMICO BOB" 1/- Golf Ball.	
Guaranteed new material from Core to Cover	9/6
"NOVA" 1/3 Golf Ball.	
Exceptional Value. Equal to many 2/- Balls.. ..	12/-
"AVON" 2/- Golf Ball.	
Made from finest material procurable. Its Cover composed of indestructible material will not split or cut, and retains both its paint and shape	18/-

LEATHER LEGGING DEPARTMENT.

Boys' Best Brown Leather, Blocked per pair	3/3
Youths'	3/11
Gent.'s Seamed	6/3
Gent.'s Blocked	8/6
Gent.'s Best Black Leather,	8/6

WATERPROOF COLLARS.

WASHABLE.

	Ordinary.	Metal Buttonholes.
	Per doz. Per doz.	
BOYS' WATERPROOF COLLARS.		
Eton, 2 $\frac{1}{8}$ " deep, ordinary, largely sold, all sizes	2/8$\frac{1}{2}$	2/9$\frac{1}{2}$
Harrow, 2 $\frac{3}{8}$ " deep (Shaped)	2/11	3/-
Winchester, 2 $\frac{5}{8}$ " deep	3/6	3/7
Largely sold.		
Westminster, 3" deep	4/5	4/6
In demand.		
LADIES' WATERPROOF COLLARS.		
"Single" All sizes.	3/4	3/5
"Nurse"	3/7	3/8
GENT.'S WATERPROOF COLLARS.		
Stand up, 2" deep All sizes.	2/6	2/7
" 2 $\frac{1}{4}$ "	2/11	3/-
" 2 $\frac{1}{2}$ "	3/1	3/2
Stand up, turn down corners, 1 $\frac{7}{8}$ " deep	2/6	2/7
" 2 $\frac{1}{4}$ "	2/9	2/10
Turn down all round 2 $\frac{1}{4}$ "	3/1	3/2
Double Collars 1 $\frac{5}{8}$ "	3/9	3/10
" 1 $\frac{3}{4}$ "	3/10	3/11
" 2"	4/3	4/4
" 2 $\frac{1}{4}$ "	4/7	4/8
" 2 $\frac{1}{2}$ "	5/6	—

GENERAL MANUFACTURES OF OUR MILLS.

		Metal
		Ordinary. Buttonholes.
		Per doz. Per doz.
WATERPROOF COLLARS FOR CLERGYMEN.		
Single	All sizes.	2/9 —
Double	”	3/4 —
GENT.'S COLLARS WITH FRONTS.		
Turn down all round		7/10 7/11
Stand up, with turn down corners		7/10 7/11
BOYS' WATERPROOF FRONTS.		
Ordinary		2/9 2/10
” with collar band		2/10 2/11
GENT.'S WATERPROOF FRONTS.		
Ordinary with collar band		3/4 3/5
” ” No. 2. size		3/9 3/10
Reversible		3/9 3/10
BOYS' WATERPROOF CUFFS.		
		Dozen Pairs.
3" deep, all sizes		4/2
LADIES' WATERPROOF CUFFS.		
2 $\frac{3}{4}$ " deep, Square corners, 1 buttonhole		4/5
5 $\frac{3}{8}$ " ” ” 2 ”		6/8
4" deep, Round corners, 1 buttonhole, for Nurses		5/3
GENT.'S WATERPROOF CUFFS.		
3 $\frac{3}{4}$ " deep, Square corners, 2 buttonholes	All sizes.	5/3
3 $\frac{7}{8}$ " ” Round ” 1 ”		5/3
4 $\frac{3}{4}$ " ” Shaped ” 3 ”		6/2
4 $\frac{7}{8}$ " ” Square ” 2 ”		6/2
SOAP.		
For Cleaning Waterproof Collars. Per dozen Tablets,		4d.
SPECIALITY IN WATERPROOF COLOURED COLLARS.		
Gent.'s Waterproof Coloured Collars. Metal Buttonhole		
1 $\frac{3}{4}$ " "Double," Pink Blue, Green, and Heliotrope		
Stripes	per doz.	4/7
Gent.'s Waterproof Coloured Fronts.		
Pink Stripe	”	4/9
Blue Stripe	”	4/9
Gent.'s Waterproof Coloured Cuffs.		
3 $\frac{7}{8}$ " deep, Round corners, 1 buttonhole per doz.		6/6
4 $\frac{1}{2}$ " ” Square corners, 3 buttonholes ” ”		8/-

NOTE ADDRESS :

YORKSHIRE RUBBER CO., 20, Boar Lane, LEEDS.

FISHING REQUISITES.

WATERPROOF FISHING STOCKINGS.

Stout Drab Twill Cloth, thoroughly reliable,	Per pair.
Sizes 10, 10½, 11, 11½	13/6
Strong Sateen to Wigan Cloth, best make,	
Sizes 10, 10½, 11, 11½. Recommended	16/6

GENT'S WATERPROOF FISHING TROUSERS.

Stout Drab Twill Cloth, thoroughly reliable	22/6
Strong Sateen to Wigan Cloth, best make	26/6

GENT'S WATERPROOF FISHING JACKETS.

Single Texture Fawn Paramatta or Dark Grey Tweed	17/6
Lengths, 35". Chests 38", 40", 42", 44".	
Double Texture Fawn Paramatta Recommended	21/-
Lengths, 35". Chests, 38", 40", 42", 44".	

GENT'S FISHING BROGUES. To Lace.

Brown Canvas per pair	17/6
-------------------------------	-------------

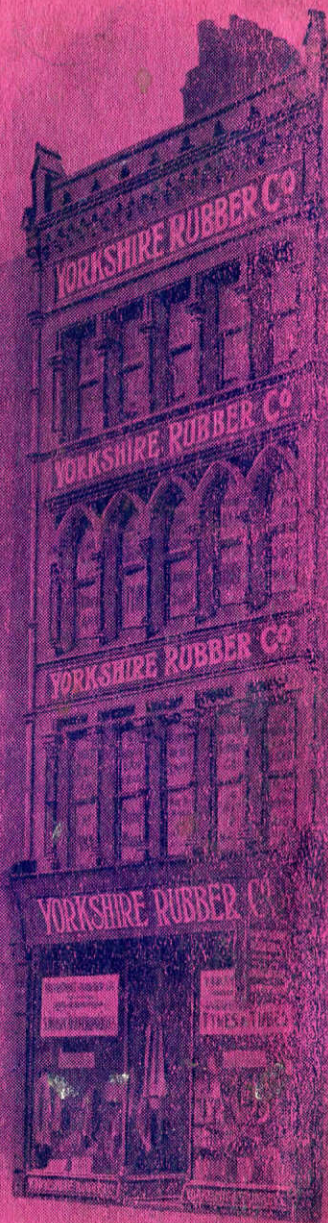
OILSKIN DEPARTMENT.

No.	Trade Prices.
50 MEN'S OILSKIN COATS. Double Breasted, unlined.	
Sizes 48", 50", 52", 54" longeach	9/3
51 MEN'S OILSKIN COATS. Double Breasted, Lined, Super	
Quality, Leather Bound, Sizes 48", 50", 52", 54" long, each	12/6
52 MEN'S OILSKIN JACKETS. Double Breasted.	
Unlined. Sizes 33" and 36" long each	6/9
53 MEN'S OILSKIN JACKETS. Double Breasted, Half	
Lined, Super Quality, Sizes 33" and 36" long ..each	8/6
54 MEN'S OILSKIN CAPES, Unlined, Velvet Collar,	
33" long, 6/- ; 36" long, 6/9	
55 MEN'S OILSKIN CAPES, Lined, Velvet Collar, Super	
Quality, 33" long, 7/6 ; 36" long, 8/6 each.	
56 MEN'S OILSKIN SOU'-WESTERS. Wool lined ..each	1/4
57 " " " " " Superior, ..	1/9
58 " " " " " Sateen Lined, Best, ..	2/4
59 MEN'S OILSKIN OVERALL LEGGINGS. To pull on.	
Plain Front per pair	2/6
60 MEN'S OILSKIN OVERALL LEGGINGS. To pull on.	
Plain Front. Superior. Largely sold. per pair	2/9
61 MEN'S OILSKIN OVERALL LEGGINGS. To pull on.	
Shaped Front. Recommended per pair	3/3
62 MEN'S OILSKIN KNEE LEGGINGS OR THIGH TOPS.	
To pull on per pair	2/4

INDEX.

	PAGE		PAGE
Air Cushions	26	Motor Cycle Clothing	18
Baths, Portable	26	" " Belts	11
Basin Plugs	24	" " Tyres	9, 10, 11
Bathing Caps	25	Non-Slipping Bands, Cycle	7
Bed Sheetings	25	Motor Gaiters	14
Beer Tubing	23	Motor Winged Plasters	14
Belts, Motor Cycle	11	Nursing Aprons, Waterproof	25
Bibs, Waterproof	25	Oils	7
Brake Blocks, Cycle	6	Oilskin Goods	32
Boron Compo	6	Outer Covers, Cycle	2, 3, 4
Canvas, Cycle and Motor	6, 14	" " Motor Cycle	9, 10, 11
Carbide, Calcium of	6	Overalls, Waterproof	12, 13, 14
Carriage Aprons	19, 20	Paddlers, Seaside	26
Cash Mats	27	Paint, Tyre	8
Cement, Tyre	6	Patching Rubber	7
Chalk, French	6	Patchquick Patches	11
Collars, Waterproof	30, 31	Pedal Rubbers	7
Crutch Pads	27	Petroleum Jelly	7
Cycle Capes and Ponchos	12	Piece Goods, Waterproof	25, 26
" Holdalls	6	Pilches	25
" Overalls	12, 13, 14	Pram Tyres	5
Draught Tubing	23	" Tyring	6
Elastic Stockings, &c.	27	Printers' Blankets	23
Enamel, Cycle	6	Puncture Proof Bands	7
Enemas, Surgical	27	Push-Ons, Rubber	23
Finger Stalls	24	Raincoats, Ladies'	18
Fishing Requisites	32	" Gent.'s	16
Football Bladders	24	Repair Bands	8
Footwear, Rubber	28, 29, 30	" Outfits	8, 11
Force Cups	23	Rims	8, 11
Frame Protectors	6	Rubber Washers	23, 24
Gas Bags	6, 23	" Sheet	23
" Tubing	22, 23	" Hose	20, 21
Gloves, Leather	14	" Mats	20
" Rubber	24	" Water Bottles	24
Glue, Prout's	7	" Gloves	24
Goggles, Motor	14	Shoes, Rubber	28, 29
Golf Balls	30	Solution, Rubber	8, 11
Gutta Percha Sheet	24	Sponge Bags	26
Handle Fix	7	Sponges, Rubber	27
Heels, Rubber	27, 28	Squee Gees	23
Hose, Delivery	21	Thigh Tops, Waterproof	14
" Garden	20, 21	Tyre Bands	7
" Fittings	22	Tyres, Cycle	2, 3, 4
" Reels	22	" Motor Cycle	9, 10, 11
" Armouring	21	" Motor	12
Inflators	7	" Cement	6
Inflator Connections	7	" Stopping	8
" Tubing	7	Valves, Cycle	8
" Washers	7	Valve Tabs	8
Inner Tubes	1, 3, 4	" Tubing	8
Instep Pads	27	Washers, India Rubber	23, 24
India Rubber Sheet	23	Water Beds	26
Knee Leggings, Waterproof	14	" Bottles	24
Lacquer, Transparent	7	" Wings	26
Lamp Wicks	7	Waste Rubber	12
Leggings, Leather	30	Waterproofs, Ladies'	17, 18
" Waterproof	14	" Gent.'s	15, 16
Liners, Motor Cycle	14	" Misses'	18, 19
Masticated Para	7	" Boys'	16
Mats, India Rubber	20	Waterproof Sheeting	25, 26
Matting, India Rubber	20	" Bed Sheets	25
Motor Clothing	13, 14	" Nursing Aprons	25
" Tyres	12	" Piece Goods	25, 26
		Wringer Rollers, Covering	24

The "HOUSE" that "MY WAY" built.

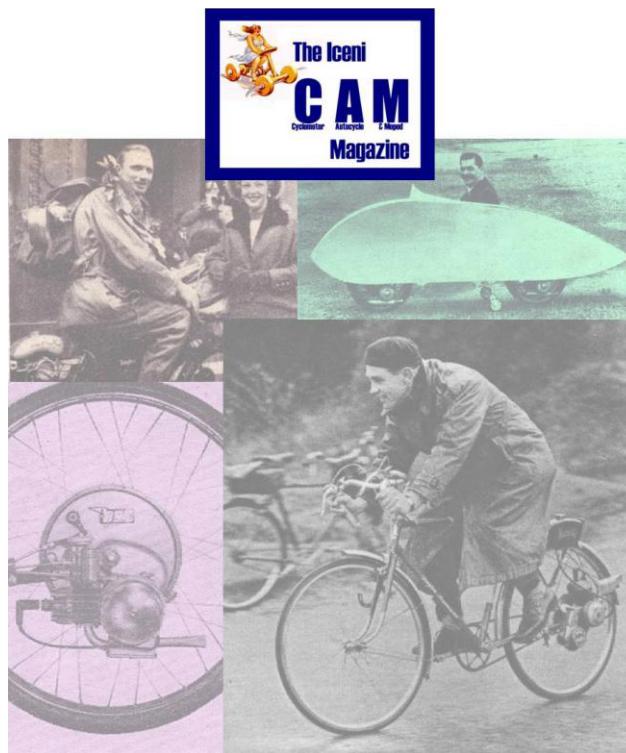


(ACTUAL PHOTOGRAPH).

YORKSHIRE RUBBER CO.,

20, Boar Lane, LEEDS.

IceniCAM On-Line Library



www.icenicam.org.uk