

INDEX

COMPANY	PAGES
Esge-Marby	1 - 6
Bierreci	7
Laprade	9 - 10
Maillard	11 - 17
Ofmega	19 - 29
Sedis	31 - 33
Sella Italia	35 - 38
Steco	39 - 40
Vredestein	41 - 42
Weinmann	43 - 67

ITEM	PAGES
Bottom Brackets	19, 24
Brakes	49-51, 53-55, 57
Brake Levers	58-59, 61-63
Brake Spares	47-48, 52, 55-56, 60, 62, 64, 65, 68
Carriers	2, 3, 39, 40
Chain	31-33
Chainwheels	19-23, 28
Cranks	24
Freewheels	15, 16
Freewheel Removers	16
Headsets	24
Hubs	11-13, 17, 19, 26, 29
Kickstand.. .. .	1
Mudguards	4-6, 66
Pedals	13, 14, 19, 25
Rims	42-45, 67
Saddles	35-38
Seat Pins.. .. .	9-10, 38
Toe Straps	7
Tubes	41-42
Tyres	41-42

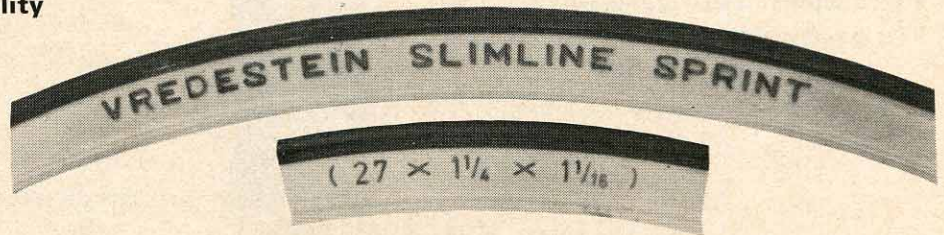


VREDESTEIN

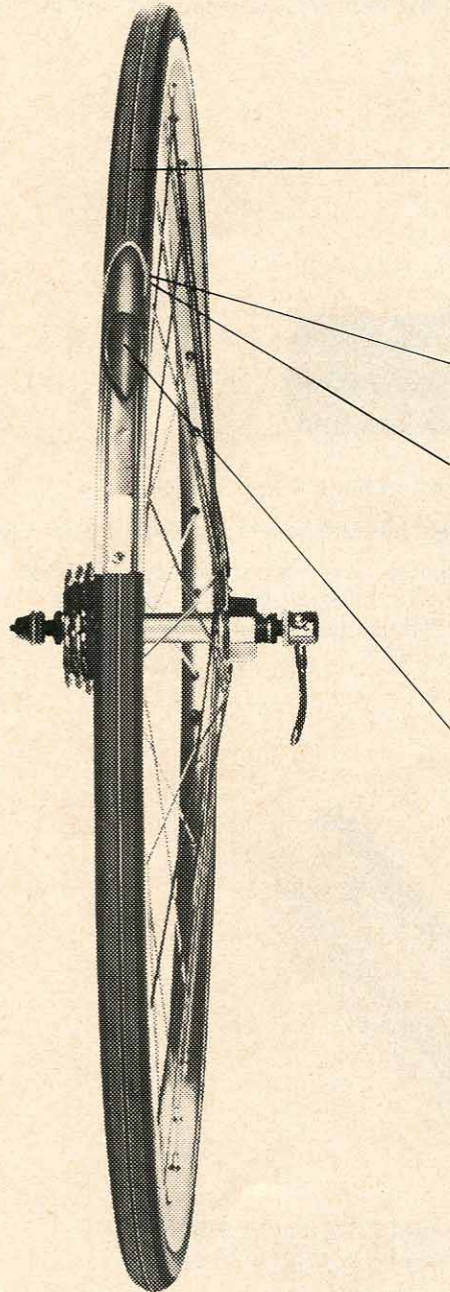
The new concept high quality

27 x 1 $\frac{1}{4}$ x 1 $\frac{1}{16}$ (25-630)

SPORTS TYRE



An ultra-lightweight narrow-section tyre for 14 mm width rims.
Developed for racing, training and touring.



Ribbed racing tread with neat profile
Transparent gumwall sides.

The lightest and most flexible fabric available
is used in the manufacture of this body fabric.
It is made from long-fibre Egyptian cotton.
The main body assures the life and performance
of this tyre.

High-pressure, completely airtight, butyl
inner tube.

NEW

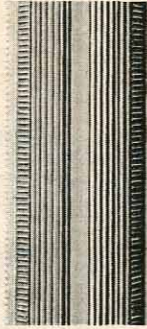
* Special thick rubber rim tape.

* 28" x 1 $\frac{5}{8}$ " x 1 $\frac{1}{16}$ " (700C).

VREDESTEIN TYRES



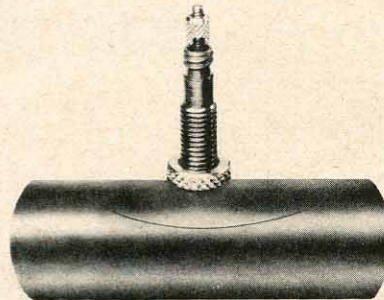
"THOROUGHLY
RECOMMENDED FOR FAST
TOURING AS WELL AS FOR
TRAINING AND GENERAL
CLUB-RIDING" . . .
. . . Cyclist Touring Club.



A sports tyre with racing tyre qualities.
Weighs only 13 ozs.



No wider than the diameter of a new penny.



Weight: approx. 4 ozs.

Higher-pressure inner tube with presta valve.

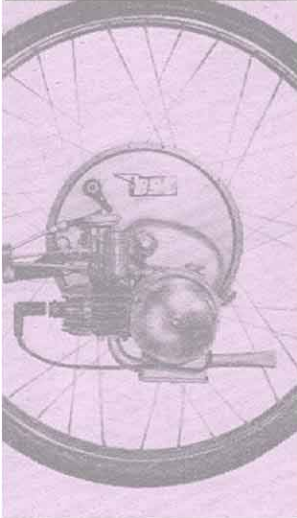
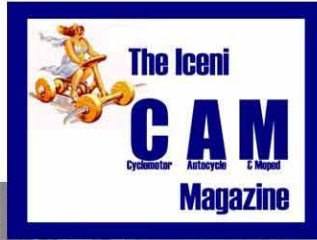
Employing new tube production methods
Vredestein have produced a better and
more reliable new shape tube and valve
connection.



The VREDESTEIN/WEINMANN
Formula for cycling in the future.

A joint development to produce the
strongest rim with a tyre of
matching quality.

IceniCAM Information Service



www.icenicam.org.uk