

R0121A

RALEIGH

Ultramatic

MOPED

MODEL RM9

SPARE PARTS LIST

PRICE 5/-

RALEIGH

Ultramatic

MOPED

MODEL RM9

SPARE PARTS LIST

RALEIGH INDUSTRIES LIMITED

Motorised Division Service Department,
Lenton Boulevard,
NOTTINGHAM.

Telephone: Nottingham 77761

Telegrams: Ralind Nottingham

Telex Nottingham 37681

IMPORTANT NOTICE

The component parts in this list are identified by a new type of sales number which should be quoted on all orders. To assist our Dealers checking in their spare parts stock for items already in use on other models, the master price list issued with this handbook contains both the old seven figure numbers and the new sales numbers in conversion order.

CONTENTS

	Group	Page
Engine and exhaust	A	4-7
Automatic clutch and variable pulley	B	8-9
Carburettor and Fuel Tap	C	10-11
Flywheel magneto	D	12-13
Transmission	E	14-15
Telescopic fork and steering head bearings	Fa	16-17
Telescopic fork and steering head bearings	Fb	18-19
Frame, fuel tank and mudguards	G	20-23
Front wheel	H	24-25
Rear wheel	I	26-27
Handlebars and control cables	J	28-29
Lighting and electric horn	K	30-31
Tools	L	32
Accessories	M	32
Service exchange	N	33
Numerical index	—	34-36

INSTRUCTIONS FOR ORDERING

It is essential that the following information is provided with every order for spare parts:—

1. Type and Model of the machine
2. Frame and Engine numbers
3. Part number, description, colour and quantity of each spare part required.

Failure to provide this necessary information will inevitably lead to delay in fulfilling the order.

Every effort is made to ensure that spare parts are readily available in all areas. Should any part not be immediately available from your local agent, he will be pleased to place an order with Raleigh Service Headquarters for you. It is not normal practice to supply spare parts direct to the public.

NOTE.—We reserve the right to alter or vary the specifications of parts herein listed without prior notice.

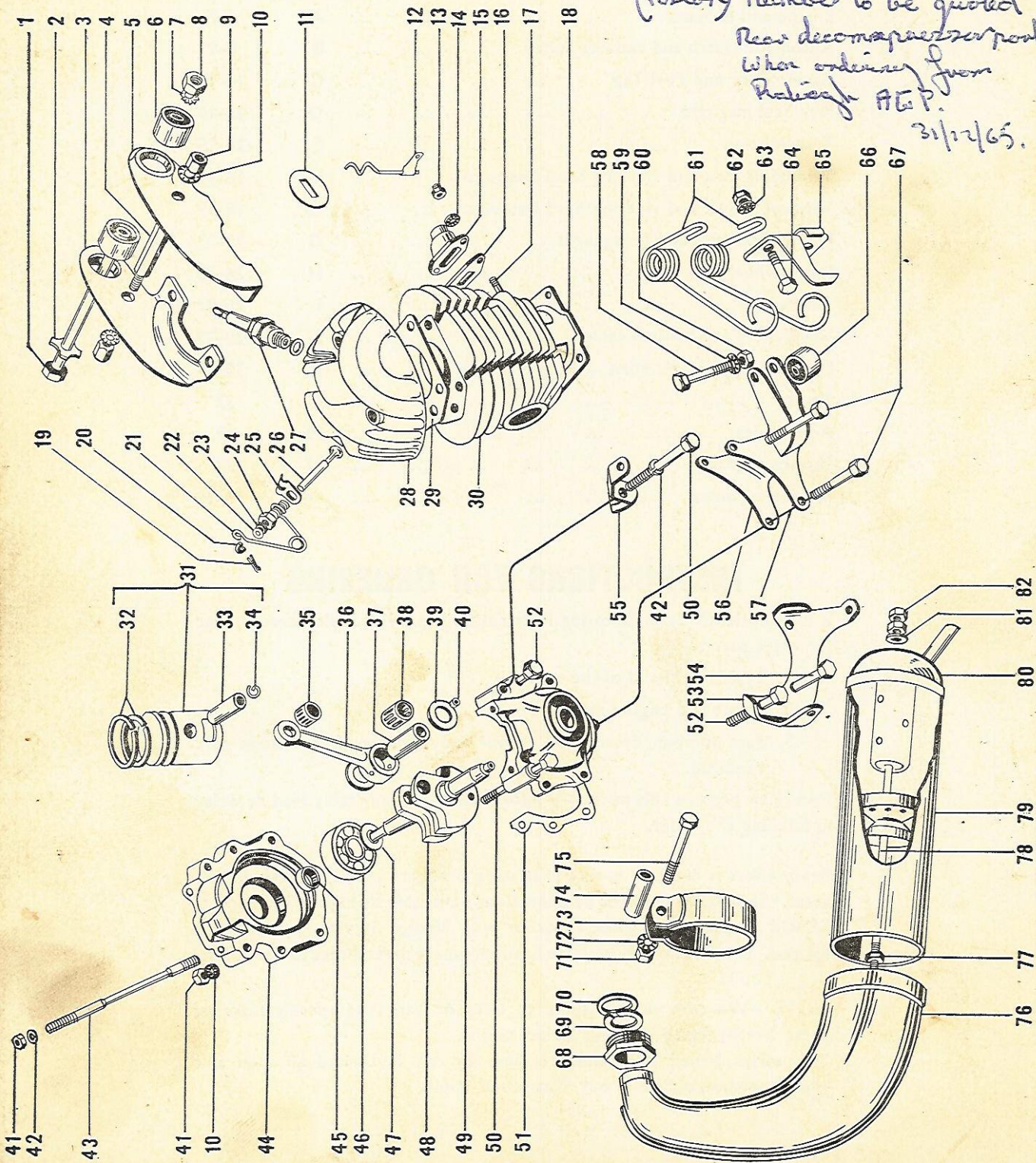
The terms issued from time to time by our Motorised Division and the Conditions of Sale in our Guarantee apply.

ENGINE AND EXHAUST

GROUP 'A'

MODEL RM9

*(Piston) Number to be quoted
Rear decompressor part
When ordering from
Raleigh A.G.P.
3/12/65.*



ENGINE AND EXHAUST

GROUP 'A'

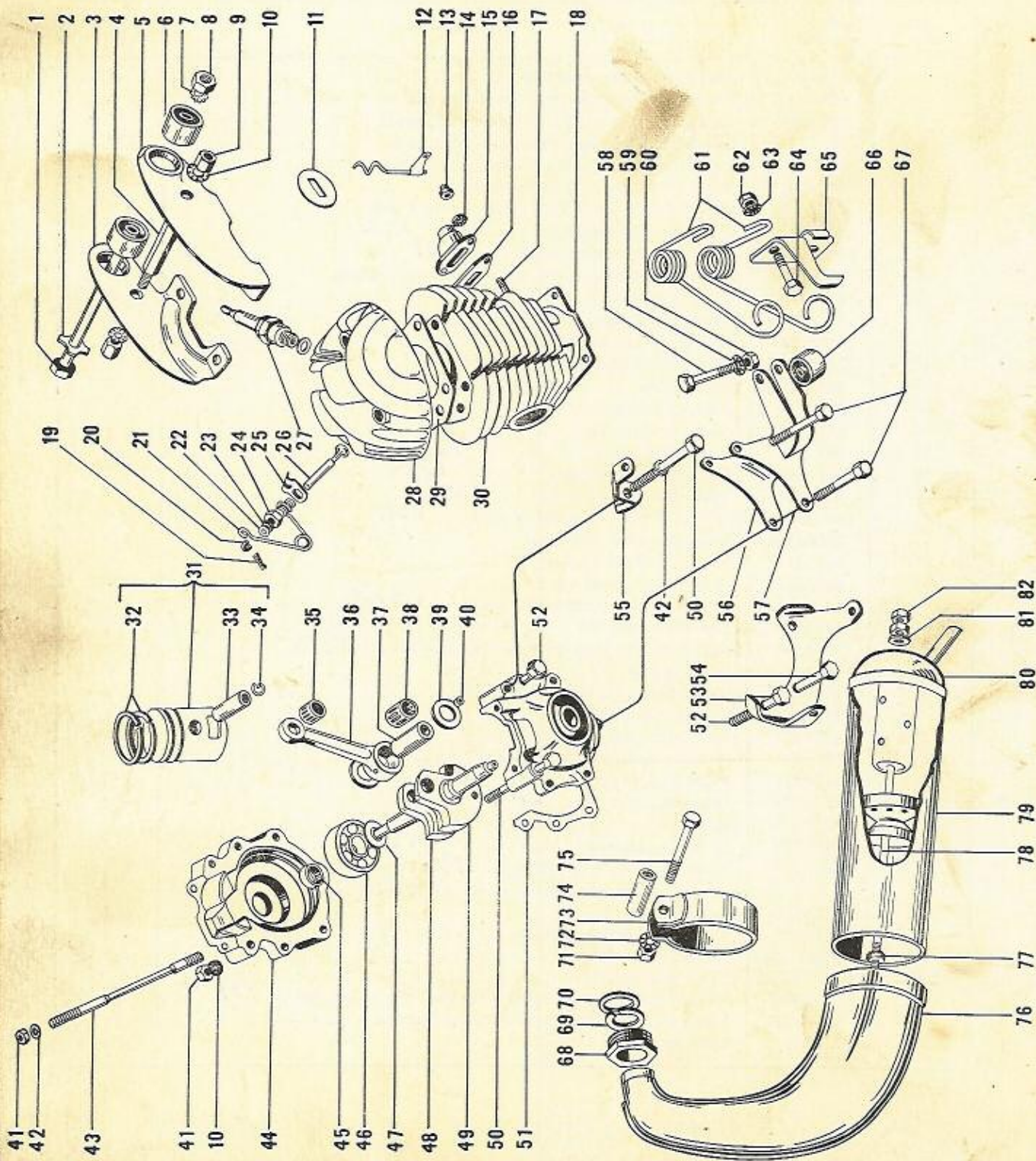
MODEL RM9

ILLUS. NO.	SALES NO.	DESCRIPTION	NUMBER OFF
1	MMB313	Bolt, upper engine mounting	1
2	MMW395	Cupped washer, upper engine mounting bolt	1
3	MTA288	Engine mounting bracket c/w bush, R.H., upper	1
4	MTA289	Spacer bar, upper engine mounting brackets	1
5	MTA290	Engine mounting bracket c/w bush, L.H., upper	1
6	MTA291	Rubber bush, engine mounting bracket	2
7	MMW396	Shakeproof washer, 8 mm., upper mounting bolt	1
8	MMN146	Nut, upper mounting bolt	1
9	MMN148	Nut, upper bracket spacer bar	2
10	MMW172	Shakeproof washer, 7 mm., spacer and crankcase bolts	8
11	MTA176	Engine type plate	1
12	MTA284	Retainer, L.T. cable	1
13	MMN147	Self locking nut, inlet adaptor	2
14	MMW181	Shakeproof washer, 6 mm.	2
15	MTA120	Inlet adaptor	1
16	MTA119	Joint, inlet flange	1
17	MTA118	Stud, inlet flange	2
18	MTA121	Joint, cylinder base	1
19	MTA106	Pin, decompressor valve	1
20	MTA105	Yoke, decompressor valve	1
21	MTA107	Hairpin spring, decompressor valve	1
22	MMW165	Retaining washer, valve seal	1
23	MTA108	Seal, decompressor valve... ..	1
24	MTA109	Body, decompressor valve	1
25	MTA110	Anchor plate, decompressor valve	1
26	MTA111	Decompressor valve	1
S.A.	MTA112	Decompressor complete (Parts Nos. 19 to 26)... ..	1
27	MTA113	Sparking plug	1
28	MTA115	Cylinder head c/w decompressor valve	1
29	MTA116	Gasket, cylinder head	1
30	MTA117	Cylinder c/w matched piston	1
*31	MTA122	Piston complete with parts Nos. 32, 33 and 34	1
32	MTA123	Piston ring, 39 mm.	2
32	MTA124	Piston ring, 39.1 mm.	2
33	MTA125	Gudgeon pin	1
34	MTA126	Circlip, gudgeon pin	2
35	MTA127	Needle roller bearing, small end... ..	1
36	MTA158	Connecting rod assembly (Parts Nos. 33, 35 to 39)	1
37	MTA128	Crankpin	1
38	MTA159	Needle roller bearing, big end	1
39	MMW176	Washer, crankpin	2
40	MTA130	Taper plug, crankpin	2
41	MMN148	Nut, ϕ 7 mm. \times 1 mm. (Cylinder head and crankcase bolts)... ..	9
42	MMW171	Spring washer, cylinder head and crankcase bolt	5
43	MTA134	Cylinder stud	4

ENGINE AND EXHAUST

GROUP 'A'

MODEL RM9

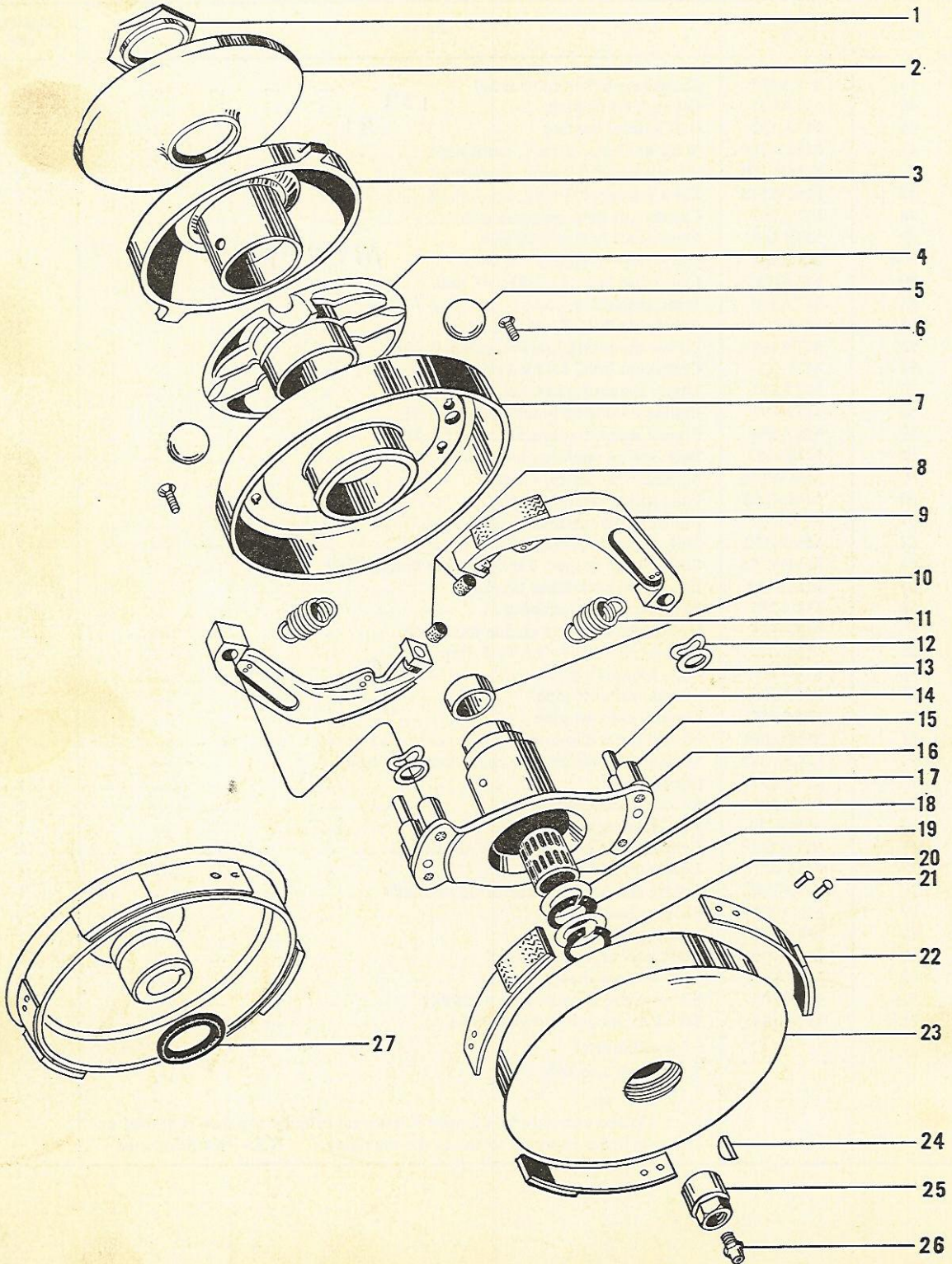


ILLUS. NO.	SALES NO.	DESCRIPTION	NUMBER OFF
44	MTA135	Crankcase halves (pair only)	1 pr.
45	MTA131	Oil seal, crankshaft	2
46	MTA132	Ball journal bearing	2
47	MMW168	Shim washer, 0.1 mm., crankshaft	V
47	MMW169	Shim washer, 0.2 mm., crankshaft	V
47	MMW170	Shim washer, 0.3 mm., crankshaft	V
48	MTA267	Crankshaft half, magneto side	1
49	MTA268	Crankshaft half, clutch side	1
S.A.	MTA269	Crankshaft assembly c/w nuts	1
50	MMB145	Crankcase bolt, 7 × 1.25 × 46 mm.	2
51	MTA136	Joint, crankcase	1
52	MMB146	Crankcase bolt, 7 × 1 × 34 mm.	2
53	MTA162	Lower mounting bracket, clutch fairing	1
54	MMB151	Crankcase bolt, 7 × 1 × 43.5 mm.	1
55	MTA292	Upper mounting bracket, clutch fairing	1
56	MTA293	Engine mounting bracket, lower R.H.	1
57	MTA294	Engine mounting bracket, lower L.H.	1
58	MMB153	Bolt, spring retaining bracket	2
59	MMW266	Shakeproof washer, 6 mm.	2
60	MMN152	Nut, spring retaining bolt	2
61	MTA167	Springs, belt tension, (1 pair)	1 pr.
62	MMN152	Nut, spring bracket bolt	2
63	MMW266	Shakeproof washer, 6 mm., spring bracket bolt	2
64	MMB153	Bolt, spring retaining bracket	2
65	MTA295	Bracket, spring retaining	1
66	MTA165	Rubber bush, lower engine mounting	1
67	MMB147	Crankcase bolt, 7 × 1 × 48.5 mm.	2
68	MMN149	Nut, exhaust pipe	1
69	MTA296	Circlip, exhaust pipe	1
70	MTA139	Gasket, exhaust pipe	1
71	MMN154	Nut, silencer clip bolt	1
72	MMW397	Shakeproof washer, 7 mm., silencer clip bolt	1
73	MTA297	Silencer clip	1
74	MTA298	Spacing tube, silencer clip	1
75	MMB314	Bolt, silencer clip	1
76	MTA299	Exhaust pipe c/w parts Nos. 68 and 69	1
77	MMN221	Lock nut, silencer stud	1
78	MTA300	Centre stud and silencer baffle assembly	1
79	MTA301	Silencer body	1
80	MTA302	End cap, silencer	1
81	MMW398	Plain washer, silencer stud	1
82	MMN152	Nut, silencer stud	2
S.A.	MTA303	Silencer and exhaust pipe assembly	1
N.I.	MTA144	Set of engine joints and gaskets	1

ϕ = Diameter
 S.A. = Sub assembly
 V = Varies
 * = Piston can only be supplied if letter on cylinder top face is quoted or cylinder returned to works for matching. N.I. = Not illustrated

AUTOMATIC CLUTCH AND VARIABLE PULLEY

GROUP 'B' MODEL RM9



AUTOMATIC CLUTCH AND VARIABLE PULLEY

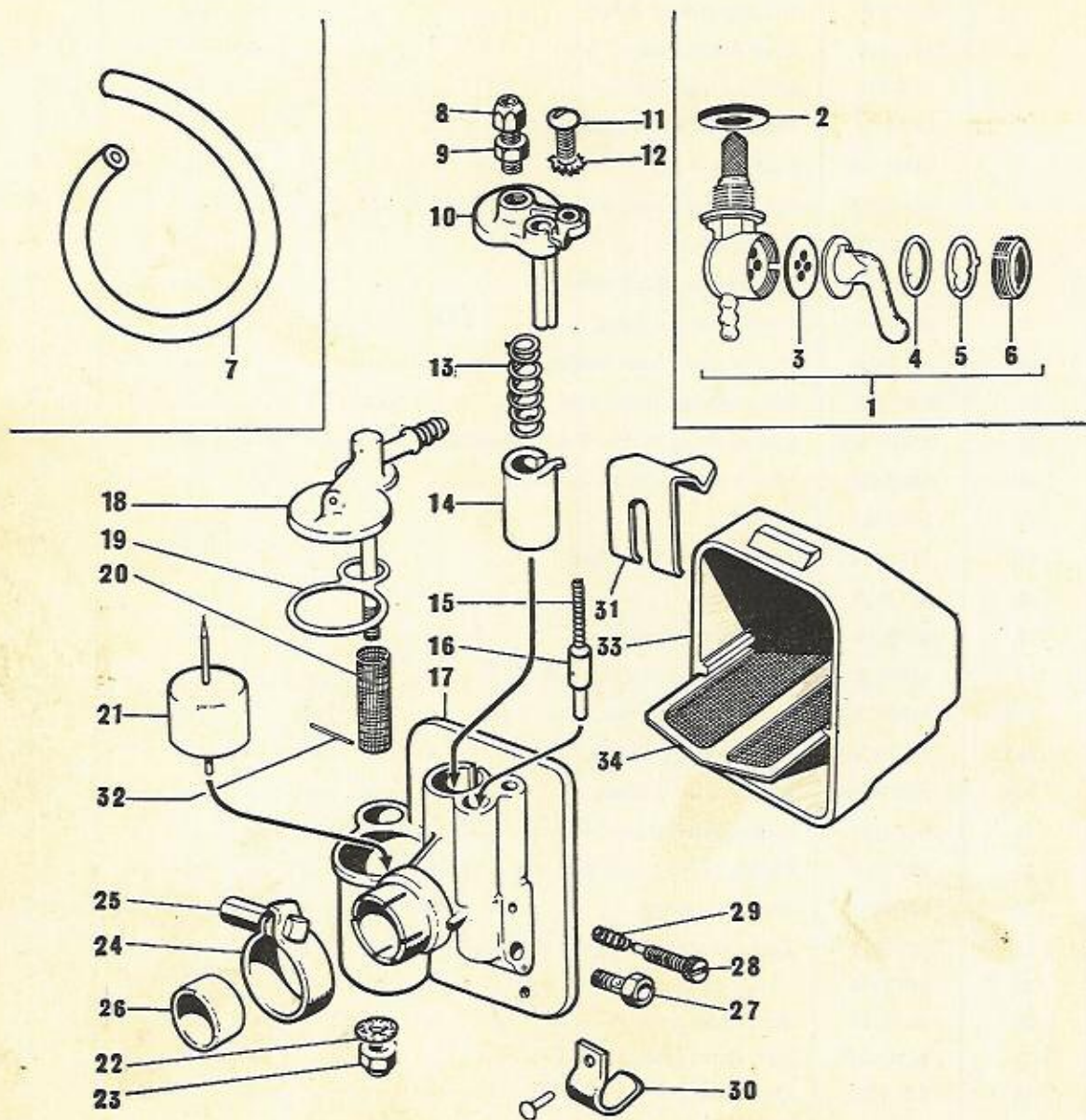
GROUP 'B' MODEL RM9

ILLUS. NO.	SALES NO.	DESCRIPTION	NUMBER OFF
1	MMN164	Nut, pulley fixed flange	1
2	MTB153	Fixed flange, pulley	1
3	MTB121	Sliding flange, pulley	1
4	MTB122	Plastic cage, speed change balls	1
5	MML107	Steel ball, $\phi \frac{17}{32}$ "	4
6	MMB165	Countersunk screw, $\phi 4 \times 0.75 \times 14$ mm.	4
7	MTB123	Clutch flange	1
8	MTB112	Rubber stop, clutch shoe... ..	2
9	MTB110	Clutch shoe c/w lining 90.	2
10	MTB124	Hollow plug, needle bearing housing	1
11	MTB128	Return spring, clutch shoe	2
12	MMW207	Curved spring washer, 8 mm., clutch shoe	2
13	MMW361	Plain washer, 10 mm., clutch shoe	2
14	MTB127	Drive peg	2
15	MTB126	Fulcrum pin, clutch shoe... ..	4
16	MTB125	Clutch hub... ..	1
17	MTB106	Needle roller bearing	1
18	MMW202	Locating washer, clutch hub 5.8	2
N.I.	MMW203	Shim washer, 0.1 mm.	V
N.I.	MMW204	Shim washer, 0.25 mm.	V
N.I.	MMW205	Shim washer, 0.4 mm.	V
19	MTB107	Circlip, external type, $\phi 15$ mm... 5.7	1
20	MTB108	Circlip, internal type, $\phi 22$ mm... 5.7	1
21	MTB118	Rivet, leaf spring 9.0	6
22	MTB117	Leaf spring c/w lining and rivets	3
23	MTB154	Clutch drum c/w lined springs	1
24	MTB119	Key, clutch drum 5.9	1
25	MMN249	Nut, clutch drum, 11 mm.	1
26	MTB109	Grease nipple 4.3	1
27	MTB130	Sealing ring	1
S.A.	MTB155	Automatic clutch c/w variable pulley	1

ϕ =Diameter S.A.=Sub assembly N.I.=Not illustrated V=Varies

CARBURETTOR AND FUEL TAP GROUP 'C' MODEL RM9

Later Type RM9 fitted with larger Carburettor

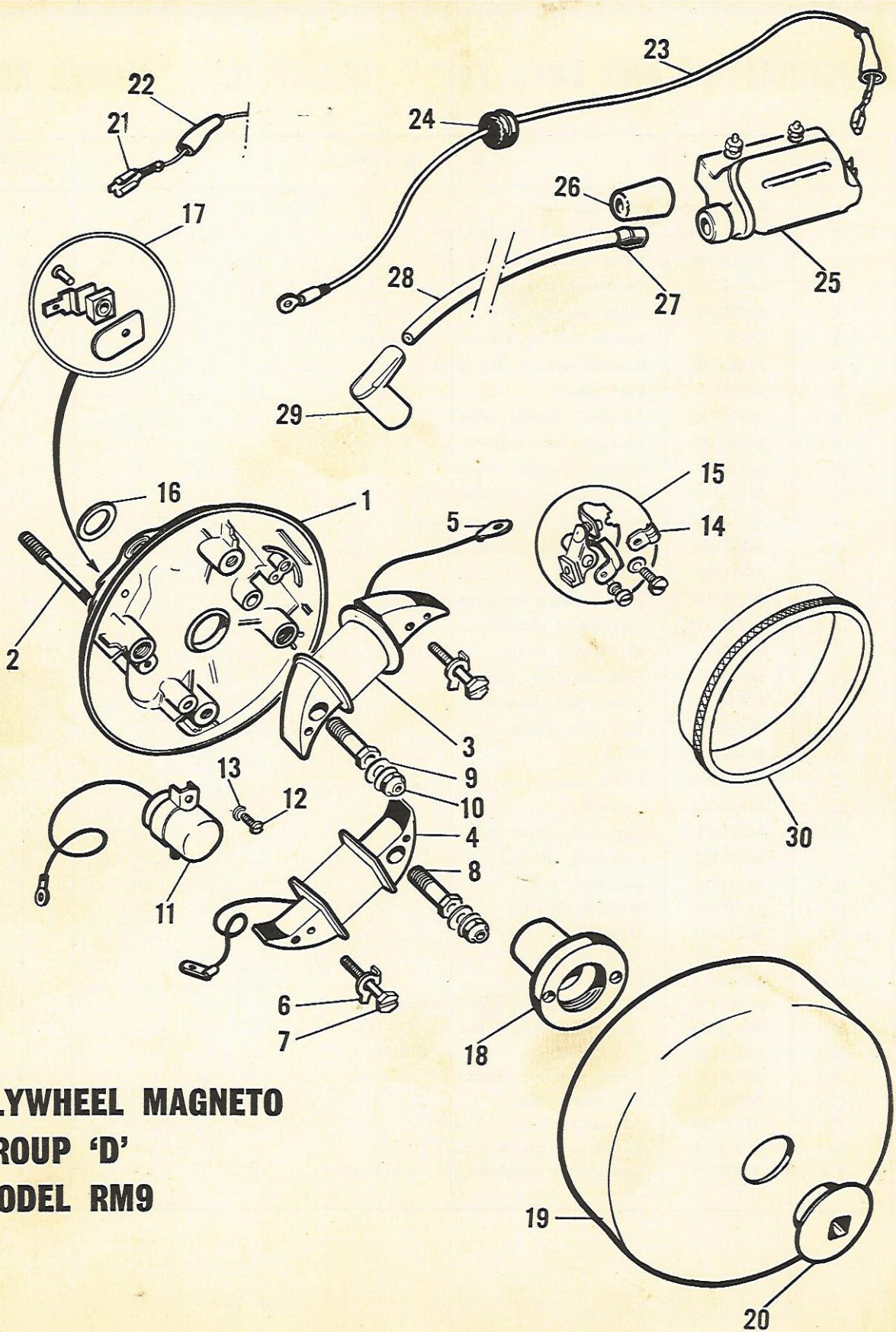


CARBURETTOR AND FUEL TAP

GROUP 'C'

MODEL RM9

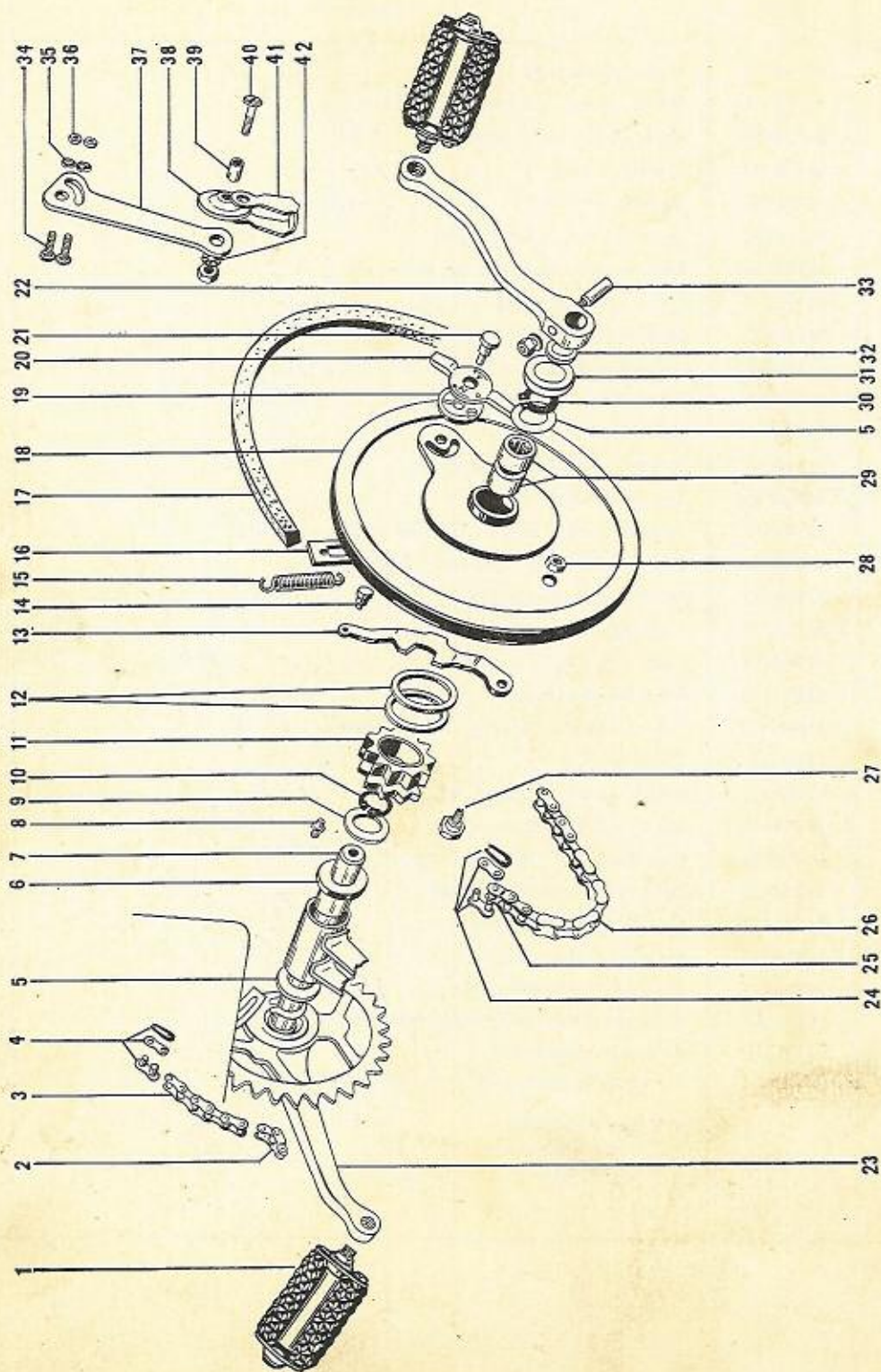
ILLUS. NO.	SALES NO.	DESCRIPTION	NUMBER OFF
1	MTH217	Fuel tap ⁷⁵	1
2	MMW245	Fibre washer, fuel tap, $\frac{1}{8}$ "	V
or 2	MMW246	Fibre washer, fuel tap, $\frac{3}{16}$ "	V
3	MTH195	Cork seal, fuel tap ... ¹⁶⁰	1
4	MTH196	Fibre seal, tap lever ... ¹⁶⁰	1
5	MTH197	Spring, fuel tap seal ... ¹⁶⁰	1
6	MTL270	Screwed retainer, tap lever	1
7	MTH216	Fuel pipe	1
8	MTH106	Adjuster, throttle cable	1
9	MMN180	Locknut, cable adjuster	1
10	MTH107	Mixing chamber cover	1
11	MMB177	Screw, mixing chamber cover	1
12	MMW247	Shakeproof washer, cover screw	1
13	MTH108	Return spring, throttle slide	1
14	MTH109	Throttle slide	1
15	MTH110	Return spring, enrichment plunger	1
16	MTH111	Enrichment plunger	1
17	MTH219	Carburettor body	1
18	MTH113	Float chamber cover	1
19	MTH114	Joint, Float chamber	1
20	MTH115	Fuel filter gauze	1
21	MTH116	Float	1
22	MMW248	Fibre washer	1
23	MMN181	Cap nut	1
24	MTH117	Clip, carburettor stub	1
25	MMP142	Clip bolt, c/w nut	1
26	MTH118	Insulating sleeve	1
27	MTH119	Main jet, No. 18	1
or 27	MTH120	Main jet, No. 19	1
or 27	MTH121	Main jet, No. 20	1
or 27	MTH122	Main jet, No. 21	1
28	MMB178	Adjusting screw, slow running	1
29	MTH123	Spring, adjusting screw	1
30	MTH124	Lower clip, c/w rivet, air cleaner	1
31	MTH125	Upper clip, air cleaner	1
32	MTH126	Pin, upper clip	1
33	MTH127	Air cleaner body ¹¹⁰	1
34	MTH128	Air cleaner gauze ¹⁶⁷	1
S.A.	MTH220	Carburettor complete, less control cables	1



FLYWHEEL MAGNETO
GROUP 'D'
MODEL RM9

ILLUS. NO.	SALES NO.	DESCRIPTION	NUMBER OFF
1	MTM157	Stator plate, bare	1
S.A.	MTM158	Stator plate, complete	1
2	MTM129	Stud, stator plate securing ... <i>151</i>	2
3	MTM130	Lighting coil <i>145</i>	1
4	MTM131	Ignition coil, L.T. <i>145</i>	1
5	MTM132	Terminal tag, internal coils	2
6	MTM133	Locking tab, coil securing screw <i>151</i>	2
7	MMB236	Screw, coil securing <i>172</i>	2
8	MMB237	Hollow screw, coil securing <i>169</i>	2
9	MMW307	Belleville washer, φ 5 mm. <i>169</i>	4
10	MMN226	Self-locking nut, φ 5 × 0.75 mm <i>151</i>	2
11	MTM134	Condenser <i>150</i>	1
12	MMB238	Screw, φ 4 × 0.75 × 10 mm. <i>150</i>	4
13	MMW308	Spring washer, φ 4 mm.	4
14	MTM135	Adjusting clip, contact breaker <i>158</i>	1
15	MTM136	Contact breaker, complete <i>149</i>	1
16	MTM137	Sealing ring, stator plate <i>151</i>	1
17	MTM138	Lighting terminal, complete <i>148</i>	1
18	MTM139	Cam <i>146</i>	1
19	MTM159	Magneto flywheel	1
20	MMN227	Nut, flywheel retaining, 11 mm. thread <i>164</i>	1
21	MTP161	Terminal tag <i>155</i>	2
22	MTP162	Plastic cover, terminal tag <i>155</i>	2
23	MTM143	Ignition L.T. lead, complete <i>153</i>	1
24	MTM144	Grommet, L.T. wire <i>152</i>	1
25	MTM145	H.T. ignition coil, external <i>143</i>	1
26	MTM146	Cap, H.T. lead to coil <i>152</i>	1
27	MTM147	Terminal, H.T. lead <i>156</i>	1
28	MTM148	H.T. lead, c/w terminal <i>147</i>	1
29	MTM122	Waterproof suppressor cover, sparking plug	1
30	MTR301	Coil centralising ring	1
S.A.	MTM151	Flywheel magneto complete, less external coil	1

S.A.=Sub-assembly
N.I.=Not illustrated
φ=Diameter



TRANSMISSION

GROUP 'E'

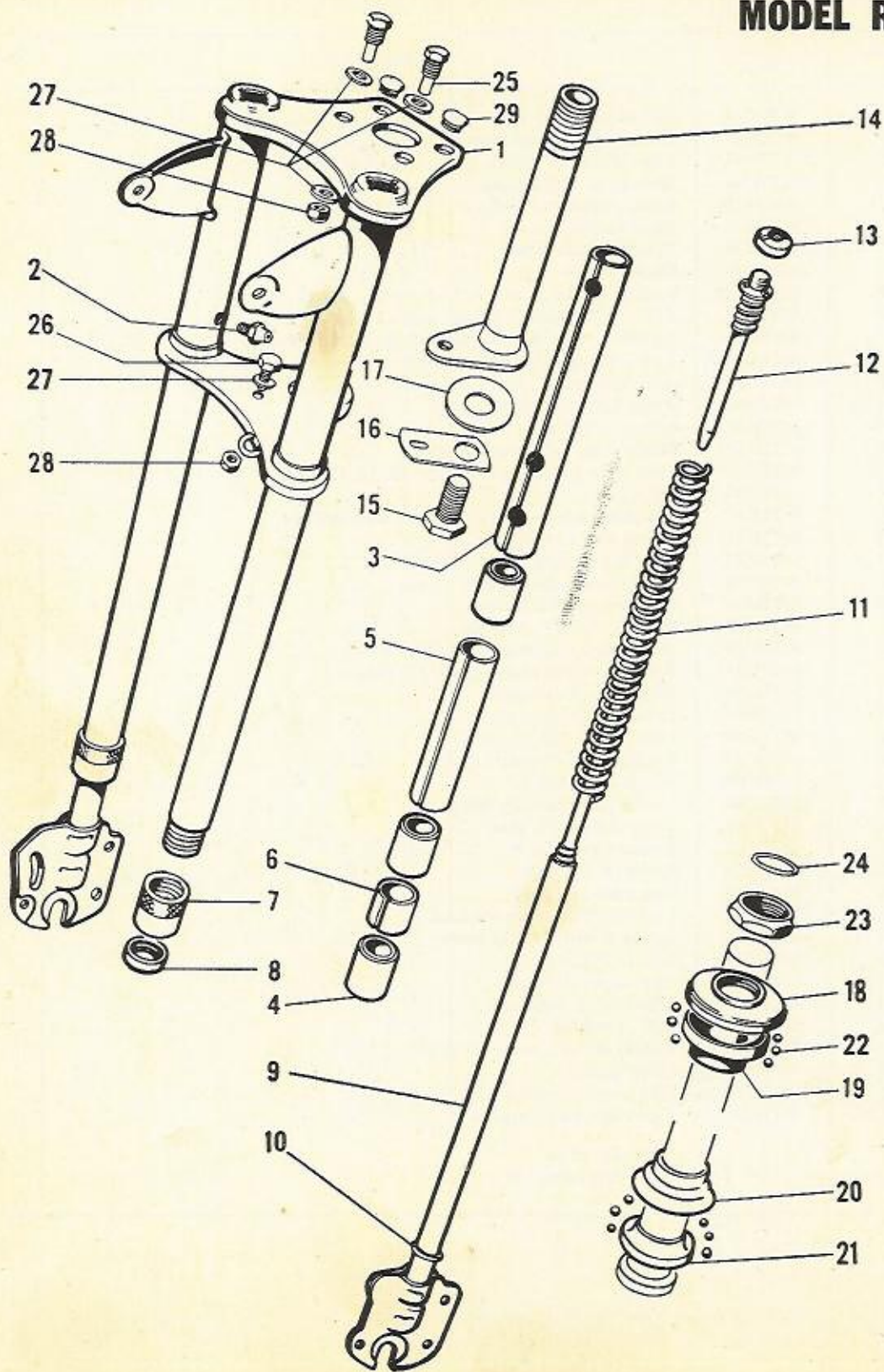
MODEL RM9

ILLUS. NO.	SALES NO.	DESCRIPTION	NUMBER OFF
1	MTD244	Pair of pedals	1 pr.
2	MTD199	Cranked link, pedal chain	1
3	MTD197	Pedal chain, 93 pitches ... <i>118</i>	1
4	MTD198	Spring link, pedal chain	1
5	MMW231	Spacing washer, ϕ 16.5 \times 27 \times 1 mm. <i>40</i>	2
6	MTD211	Bush, bottom bracket ... <i>35</i>	2
7	MTD178	Bottom bracket axle ... <i>91</i>	1
8	MTD179	Grease nipple <i>73</i>	1
9	MMW232	Spacing washer, ϕ 16.5 \times 33 \times 0.8 mm. <i>40</i>	1
10	MTD182	Inner circlip, bottom bracket axle ... <i>39</i>	1
11	MTD245	Sprocket, 11 tooth, c/w plastic rings ... <i>W W</i>	1
12	<i>X</i> MTD253 <i>X</i>	Pair of plastic rings, B/B sprocket	1 pr.
13	MTD252	Arm, lock lever	1
14	MTD190	Rivet, lock lever spring	1
15	MTD188	Spring, lock lever	1
16	MTD189	Guide plate, lock lever spring	1
S.A.	MTD251	Lock lever assembly (Parts Nos. 13, 14, 15, 16 and 27) <i>41</i>	1
17	MTD246	Drive belt	1
18	MTD247	B/B pulley c/w sprocket, lock lever and bearings	1
19	MTD191	Spring disc, turn button	1
20	MTD220	Turn button, lock lever ... <i>41</i>	1
21	MTD192	Fulcrum rivet, turn button ... <i>41</i>	1
22	MTD248	Pedal crank L.H. (Oval)	1
22	MTD232	Pedal crank L.H. (Square)	1
23	MTD249	Pedal crank and chainwheel (32T) (Oval)	1
23	MTD233	Pedal crank and chainwheel (32T) (Square)	1
24	MTD195	Spring link, drive chain	1
25	MTD196	Cranked link, drive chain	1
26	MTD250	Drive chain, 101 pitches	1
27	MMP135	Fulcrum bolt c/w nut, lock lever ... <i>42</i>	1
28	MMN276	Nut, fulcrum bolt <i>42</i>	1
29	MTD184	Needle roller bearing, B/B pulley ... <i>37</i>	2
30	MTD181	Outer circlip, B/B axle ... <i>39</i>	2
31	MTD185	End cap, pulley hub ... <i>40</i>	1
32	MTD186	Spacer, L.H. crank ... <i>40</i>	1
33	MTD177	Cotter pin complete	2
34	MMB171	Locking screw, chain tensioner	2
35	MMW233	Spring washer, locking screw	2
36	MMN171	Nut, locking screw	2
37	MTD200	Arm, chain tensioner	1
38	MTD201	Wheel, chain tensioner ... <i>105</i>	1
39	MTD203	Bush, tensioner wheel ... <i>105</i>	1
40	MMP132	Spindle and nut, tensioner wheel ... <i>105</i>	1
41	MTD202	Chain guide <i>105</i>	1
42	MMW234	Shakeproof washer, 6 mm. ... <i>105</i>	1
S.A.	MTD204	Chain tensioner complete ... <i>105</i>	1

ϕ = Diameter

S.A. = Sub assembly

TELESCOPIC FORK AND STEERING HEAD BEARINGS GROUP 'Fa' MODEL RM9



TELESCOPIC FORK AND STEERING HEAD BEARINGS GROUP 'Fa' MODEL RM9

(EARLY MODEL WITHOUT FORK COVERS.) †

ILLUS. NO.	SALES NO.	DESCRIPTION	NUMBER OFF
*1	MTJ181	Fork tube assembly	1
*2	MTJ102	Grease nipple	2
3	MTJ103	Upper spacing sleeve, fork tube	2
4	MTJ104	Bush, fork tube	6
5	MTJ105	Centre spacing sleeve, fork tube	2
6	MTJ106	Lower spacing sleeve, fork tube	2
*7	MTJ195	Screwed end cap, c/w oil seal, fork tube	2
8	MTJ108	Oil seal, fork tube	2
9	MTJ177	Telescopic legs	1 pr.
10	MTJ111	Stop ring	2
11	MTJ112	Fork spring	2
12	MTJ113	Spring retaining rod	2
13	MMN187	Slotted nut, spring retaining rod	2
*S.A.	MTJ114	Front fork assembly, complete	1
14	MTJ115	Steering stem	1
15	MMB192	Bolt, steering stem	1
16	MTJ116	Locking plate, stem bolt	1
17	MMW265	Clamp washer	1
18	MTJ117	Adjustable bearing cone, steering head	1
19	MTJ118	Upper bearing cup, steering head	1
20	MTJ119	Lower bearing cup, steering head	1
21	MTJ120	Lower bearing cone, steering head	1
22	MML104	Ball bearing, $\phi \frac{5}{32}$ "	50
S.A.	MTJ121	Steering bearing set, complete (Parts No. 18 to 24 inclusive)	1
23	MMN188	Locknut, steering head	1
24	MTJ122	Sealing ring, locknut	1
25	MMB193	Bolt, steering stop	2
26	MMB194	Bolt, locking plate	1
27	MMW101	Plain washer, $\phi \frac{1}{4}$ "	5
28	MMN189	Self-locking nut, $\phi \frac{1}{4}$ " B.S.F.	3
29	MTJ123	Plastic plug, white	2

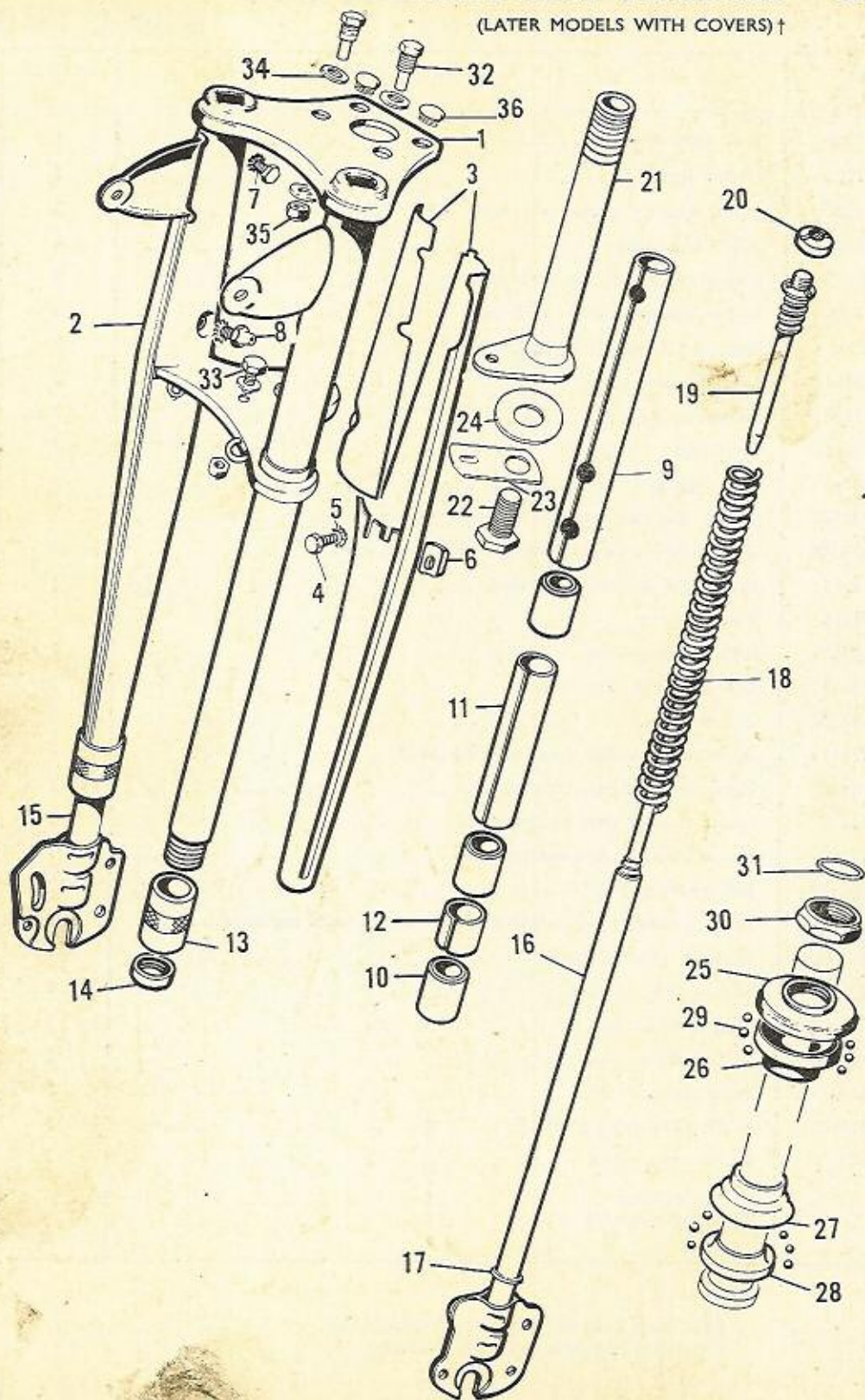
ϕ = Diameter
S.A. = Sub-assembly

† For front forks with covers see following page.
* Parts not interchangeable with Group Fb.

TELESCOPIC FORK & STEERING HEAD BEARINGS

GROUP 'Fb'
MODEL RM9

(LATER MODELS WITH COVERS) †



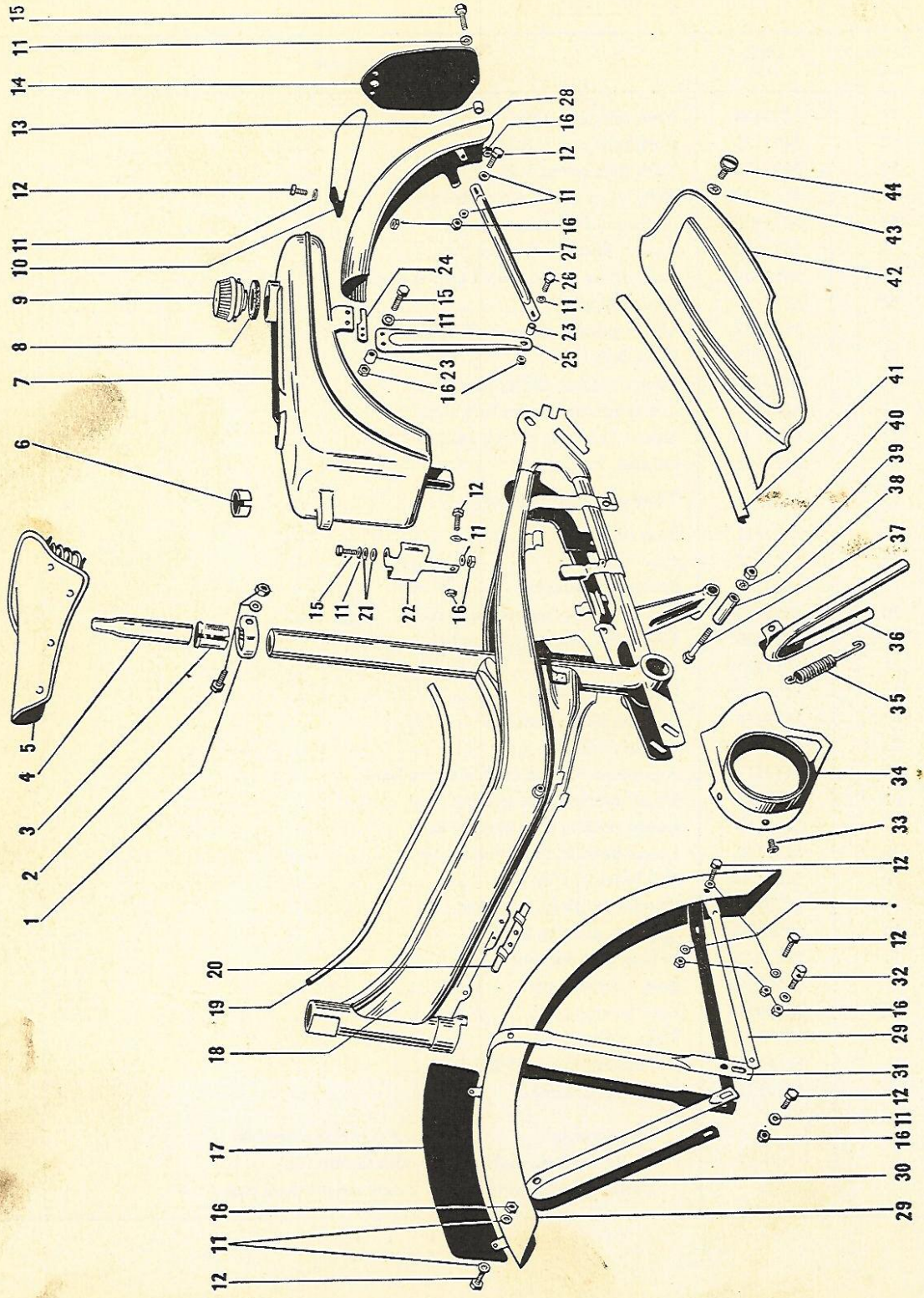
TELESCOPIC FORK & STEERING HEAD BEARINGS

(LATER MODELS WITH COVERS) †

ILLUS. NO.	SALES NO.	DESCRIPTION	NUMBER OFF
*1	MTJ124	Fork tube assembly, c/w covers	1
*2	MTJ125	Fork tube cover, R.H.	1
*3	MTJ126	Fork tube cover, L.H.	1
*4	MMB195	Bolt, lower cover, ϕ 6×1.0×9 mm.	2
*5	MMW157	Shakeproof washer, ϕ 6 mm.	6
*6	MTJ127	Spacer, lower fork cover	2
*7	MMB196	Bolt, upper cover, ϕ 6×1.0×5.5 mm.	2
*8	MTJ128	Grease nipple	2
9	MTJ103	Upper spacing sleeve, fork tube	2
10	MTJ104	Bush, fork tube	6
11	MTJ105	Centre spacing sleeve, fork tube	2
12	MTJ106	Lower spacing sleeve, fork tube	2
*13	*MTJ196	Screwed end cap c/w oil seal, fork tube	2
14	MTJ108	Oil seal, fork tube	2
15) 16)	MTJ177	Telescopic legs (pair only)	1 pr.
17	MTJ111	Stop ring	2
18	MTJ112	Fork spring	2
19	MTJ113	Spring retaining rod ... <u>52</u>	2
20	MMN187	Slotted nut, spring retaining rod ... <u>52</u>	2
*S.A.	MTJ130	Front fork assembly, complete	1
21	MTJ115	Steering stem	1
22	MMB192	Bolt, steering stem	1
23	MTJ116	Locking plate, stem bolt	1
24	MMW265	Clamp washer	1
25	MTJ117	Adjustable bearing cone, steering head	1
26	MTJ118	Upper bearing cup, steering head	1
27	MTJ119	Lower bearing cup, steering head	1
28	MTJ120	Lower bearing cone, steering head	1
29	MML101	Ball bearing, ϕ $\frac{5}{16}$ "	50
S.A.	MTJ121	Steering bearings, complete	1
30	MMN188	Locknut, steering head	1
31	MTJ122	Sealing ring, locknut	1
32	MMB193	Bolt, steering stop	2
33	MMB194	Bolt, locking plate	1
34	MMW101	Plain washer, ϕ $\frac{1}{4}$ "	5
35	MMN189	Self-locking nut, ϕ $\frac{1}{4}$ " B.S.F.	3
36	MTJ123	Plastic plug, white	2

ϕ = Diameter S.A. = Sub assembly
 * = Parts not interchangeable with Group 'Fa'
 † = For models without fork covers see previous page.

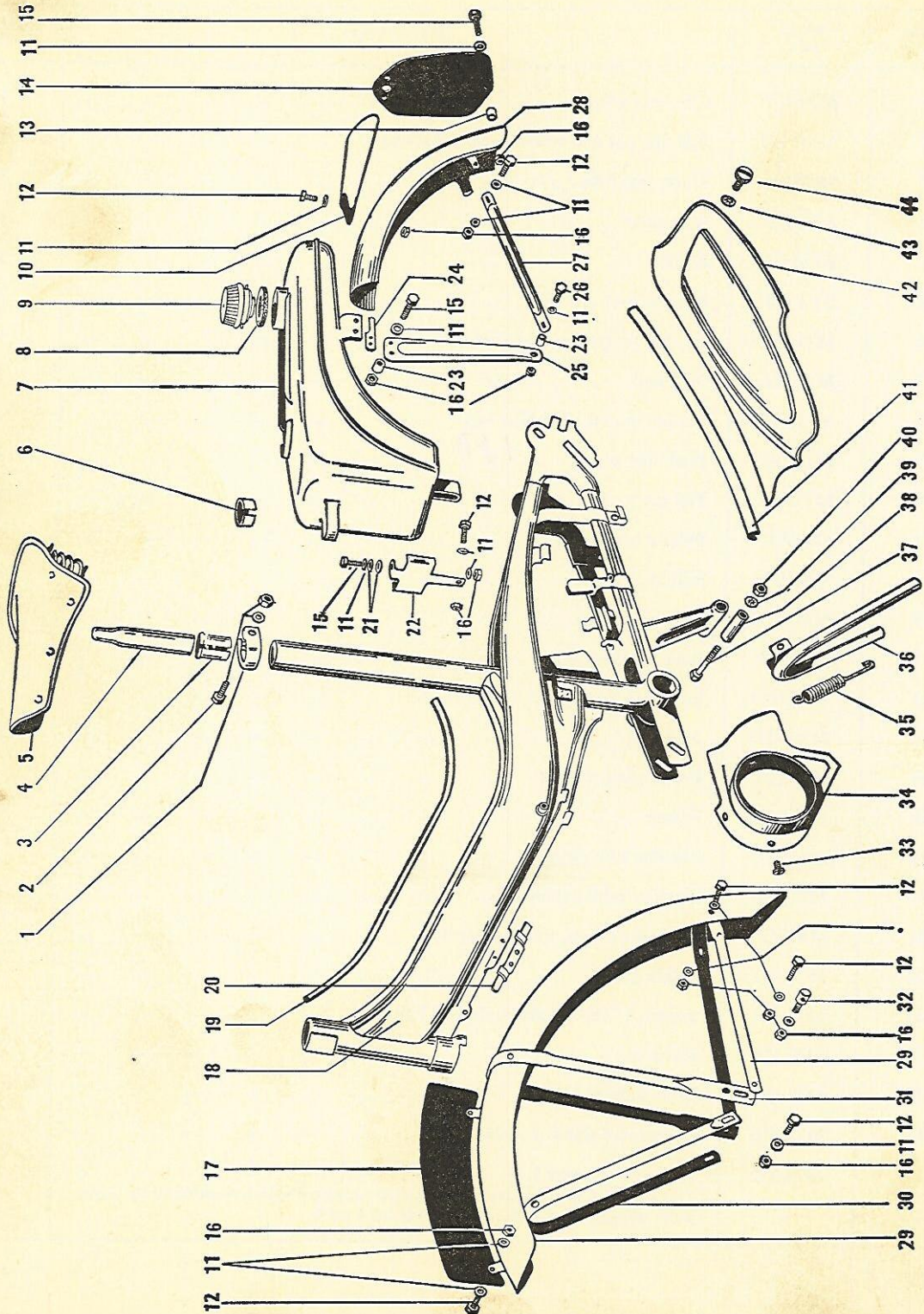
FRAME, FUEL TANK AND MUDGUARDS GROUP 'G' MODEL RM9



FRAME, FUEL TANK AND MUDGUARDS GROUP 'G' MODEL RM9

ILLUS. NO.	SALES NO.	DESCRIPTION	NUMBER OFF
1	MTF107	Clip, seat pillar	1
2	MMP137	Bolt c/w nut and washer, seat pillar clip	1
3	MTF106	Liner, seat tube	1
4	MTF105	Seat pillar	1
5	BZM852	Saddle	1
N.I.	BYA440	Saddle cover c/w clips	1
6	MTL152	Rubber mounting strip, fuel tank	1
7	MTL328	Fuel tank	1
8	MMW372	Sealing washer, fuel filler cap	1
9	MTL102	Fuel filler cap ... 180	1
10	MTL121	Tail piece	1
11	MMW105	Plain washer, $\phi \frac{3}{16}$ "	38
12	MMB206	Bolt, $\phi \frac{3}{16}$ " $\times \frac{1}{2}$ "	15
13	MMW139	Spacer, $\frac{1}{8}$ " thick	1
14	MTL123	Rear number plate	1
15	MMB140	Bolt, $\phi \frac{3}{16}$ " $\times \frac{3}{4}$ "	9
16	MMN219	Nut, $\phi \frac{3}{16}$ "	26
17	MTL128	Front number plate	1
18	MTF181	Frame	1
19	MTF125	Metallic trim strip... ..	1
20	MTF111	Bracket, cable retaining	1
21	MMW360	Rubber washers, splash plate bolt	4
22	MTL153	Splash plate	1
23	MTL119	Spacer, $\frac{1}{4}$ " thick, rear mudguard bolt	6
24	MTL154	Pump peg	1
25	MTL156	Tank support stay... ..	2
N.I.	MTL330	Chainguard (later models)	1
N.I.	MTL331	Tank support stay L.H. This stay is drilled to retain the above chainguard which is attached by using parts number 11,15,16 and 23. No. off 1 each.	1

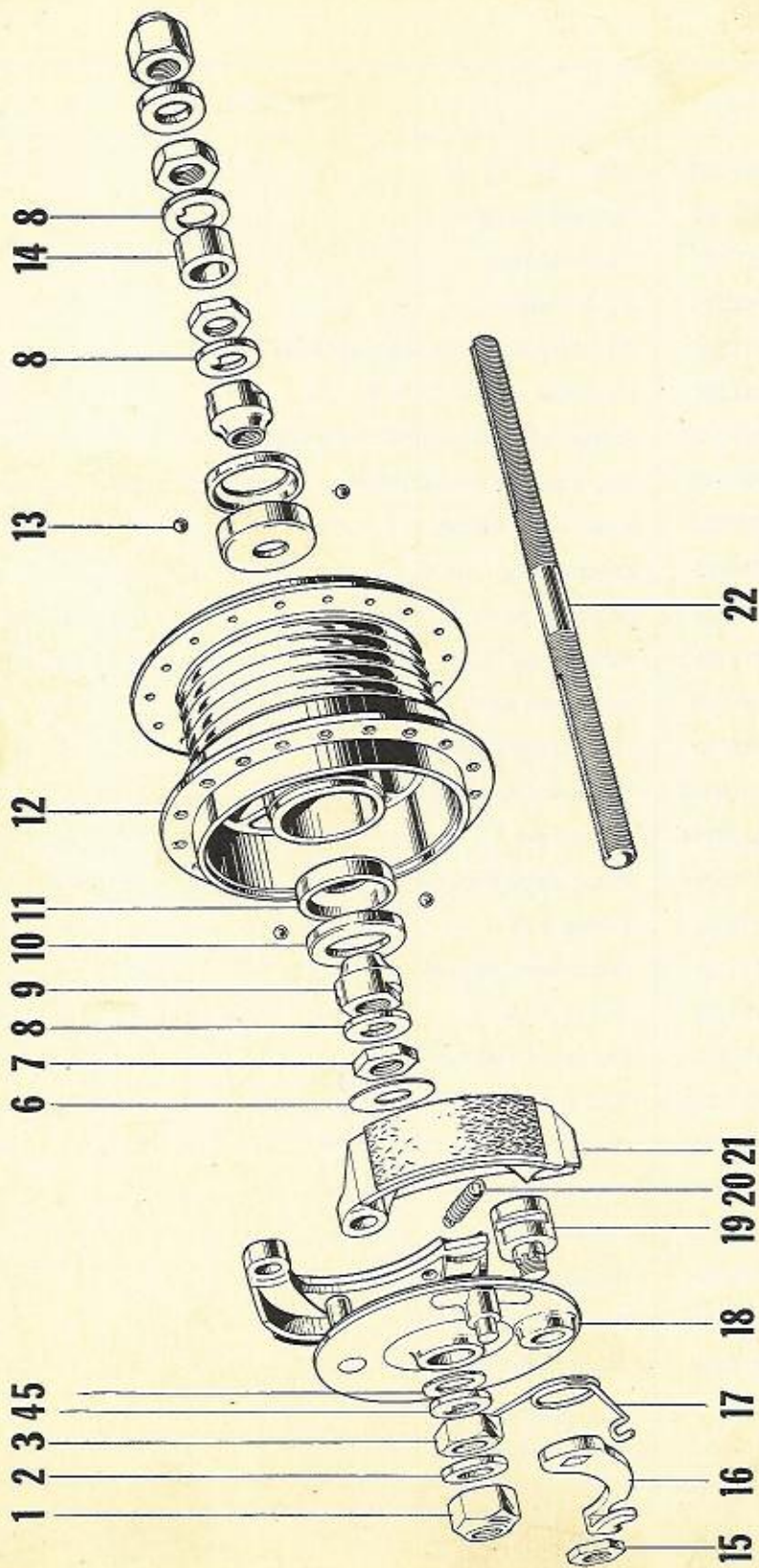
FRAME, FUEL TANK AND MUDGUARDS GROUP 'G' MODEL RM9



FRAME, FUEL TANK AND MUDGUARDS GROUP 'G' MODEL RM9

ILLUS. NO.	SALES NO.	DESCRIPTION	NUMBER OFF
26	MMB117	Bolt, $\phi \frac{3}{16}'' \times \frac{7}{8}''$	2
27	MTL126	Stay, rear mudguard	2
28	MTL155	Rear mudguard	1
29	MTL325	Front mudguard	1
30	MTL323	Stay, front mudguard, upper and lower	2
31	MTL324	Stay, front mudguard, centre	1
N.I.	MTN243	Rubber cable retainer, front brake cable	1
32	MMP149	Stop screw c/w nut and washer	1
33	MMB281	Screw, clutch fairing	3
34	MTF182	Clutch fairing	1
35	MTF123	Spring, centre stand <i>6.7</i>	1
36	MTF164	Centre stand	1
37	MMP136	Bolt, centre stand, c/w nut and washer... ..	1
38	MTF103	Distance piece, centre stand	1
39	MMW182	Shakeproof washer, ϕ 7 mm.	1
40	MMN154	Nut, ϕ 7 mm.	1
41	MTL151	Plastic edging strip, $11\frac{1}{8}''$	1
42	MTL327	Fairing, L.H.	1
N.I.	MTL149	Plastic edging strip, 14"	1
N.I.	MTL326	Fairing, R.H.	1
43	MMW289	Shakeproof washer, ϕ 5 mm.	6
44	MMB278	Fairing screw <i>9</i>	6
N.I.	MTL157	"RALEIGH" trade mark transfer	1
N.I.	MTL144	Fuel ratio transfer... ..	1
N.I.	MTL158	Frame transfer	2
N.I.	MTL329	Fairing transfer	2
N.I.	MTL160	Tank transfer, L.H.	1
N.I.	MTL161	Tank transfer, R.H.	1

ϕ =Diameter
N.I.=Not illustrated

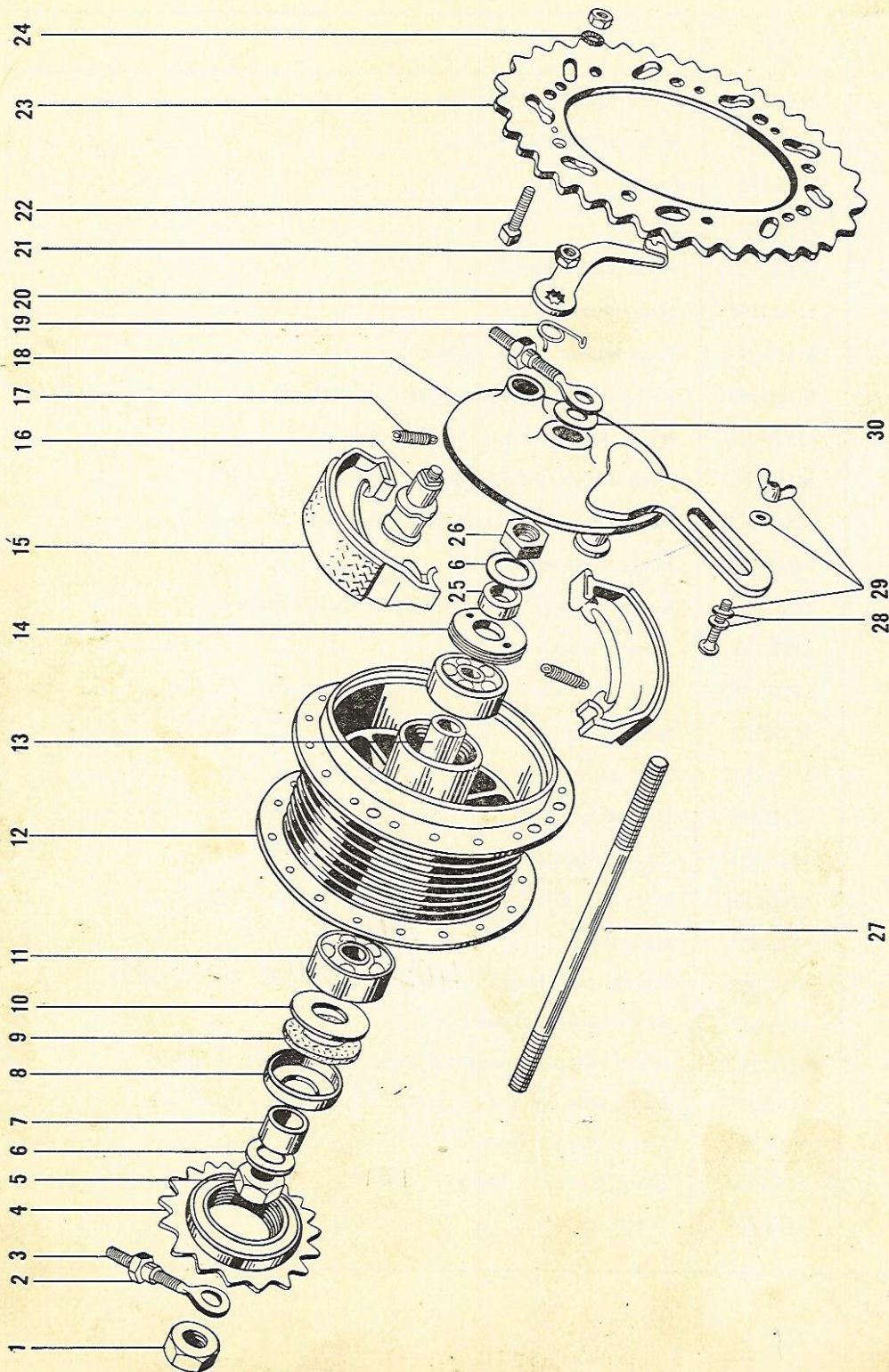


FRONT WHEEL

GROUP 'H'

MODEL RM9

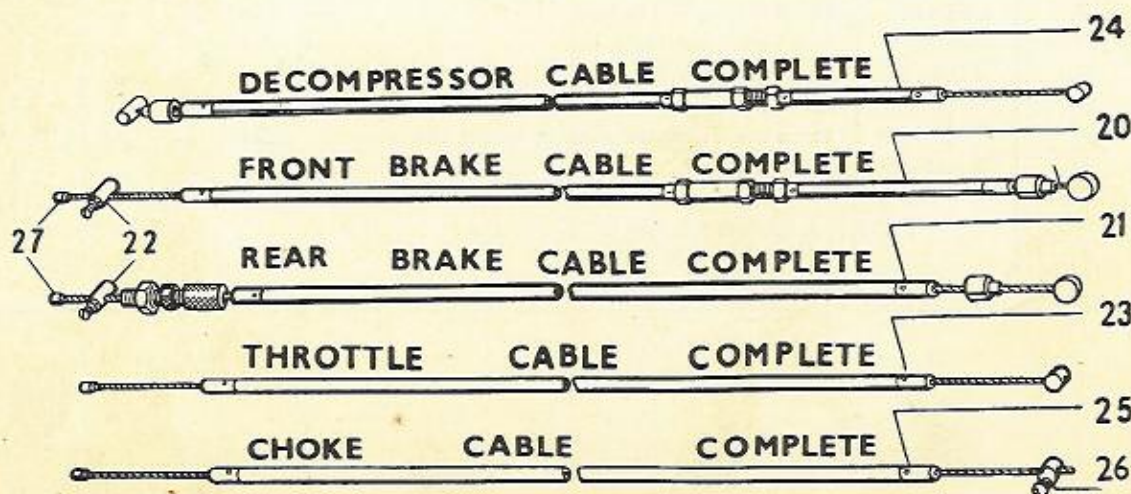
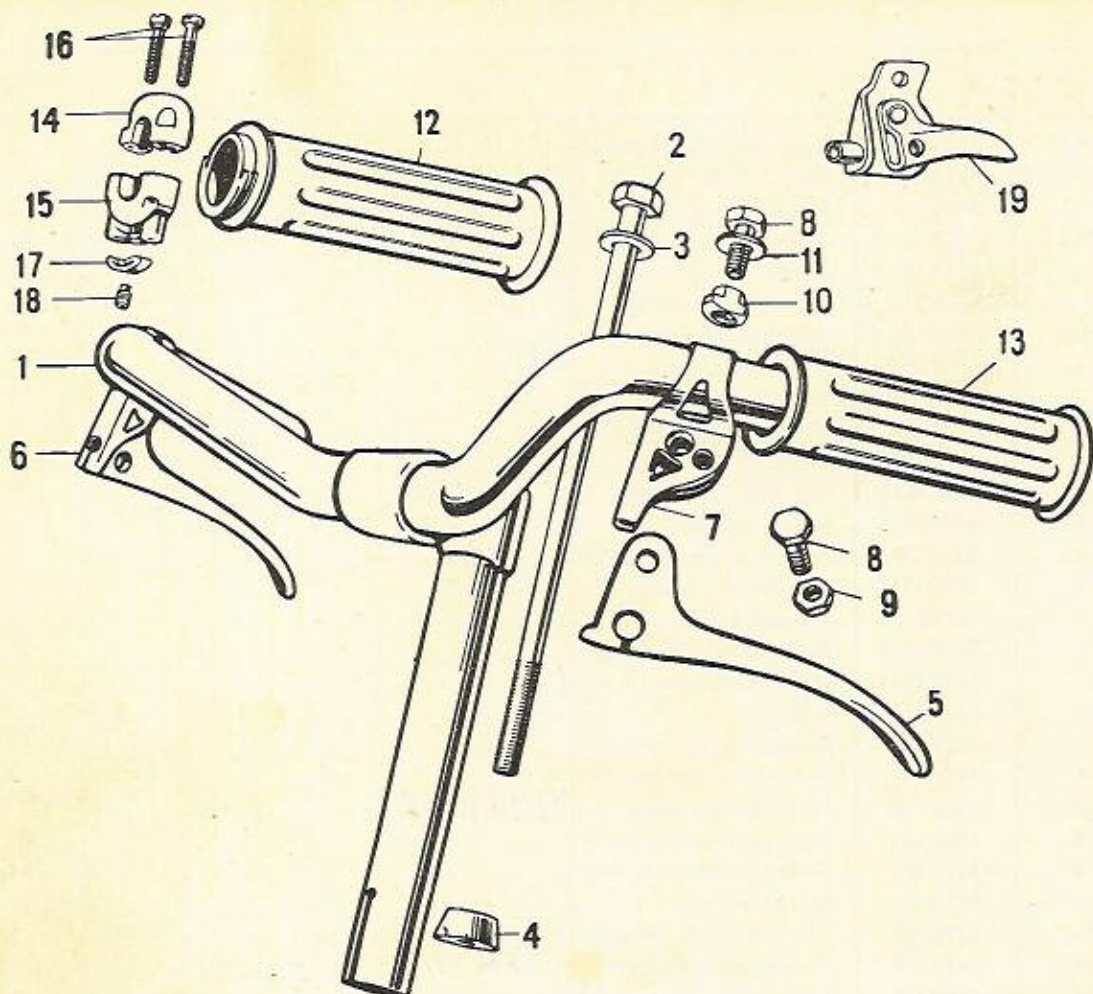
ILLUS. NO.	SALES NO.	DESCRIPTION	NUMBER OFF
N.I.	MTK259	Front wheel complete, less tyre and tube	1
N.I.	MTK102	Rim, front wheel, 23" x 2"	1
N.I.	MTK193	Spoke	36
N.I.	MTK104	Nipple	36
S.A.	MTK260	Front hub complete	1
1	MMN196	Nut, wheel spindle	2
2	MMW272	Plain washer, wheel spindle	2
3	MMN260	Locknut 7 mm. brake backplate and speedo	2
4	MMW369	Keyed washer, 2 mm. brake backplate	1
5	MMW370	Plain washer, 0.5 mm. brake backplate	1
6	MMW368	Spacing washer, 0.5 mm. brake backplate	1
7	MMN198	Locknut 3 mm. cone	2
8	MMW273	Keyed washer 1.5 mm. cone and speedo drive	3
9	MTK112	Bearing cone	2
10	MTK196	Dust cap, bearings	2
11	MTK197	Bearing cup	2
12	MTK261	Hub shell	1
13	MML106	Ball bearing, 1/2"	22
14	MTK124	Spacer, speedometer drive unit	1
15	MMN201	Nut, cam lever	1
16	MTK203	Cam lever <i>31</i>	1
17	MTK258	Spring, cam lever <i>402</i> <i>BACK x FRONT</i>	1
18	MTK263	Brake backplate bare	1
S.A.	MTK264	Brake backplate complete (Parts No. 15 to 21 inclusive)	1
19	MTK201	Brake cam c/w nut <i>8</i>	1
20	MTK145	Spring, brake shoes	1
21	MTK200	Brake shoes c/w linings <i>121</i>	1 pr.
22	MTK262	Wheel spindle	1



ILLUS. NO.	SALES NO.	DESCRIPTION	NUMBER OFF
N.I.	MTK266	Rear wheel c/w sprocket	1
N.I.	MTK102	Rim, 23" x 2"	1
N.I.	MTK107	Rim tape	1
N.I.	MTK126	Spoke	36
N.I.	MTK104	Nipple	36
S.A.	MTK267	Rear hub c/w sprocket	1
S.A.	MTK129	Rear hub less sprocket	1
1	MMN202	Nut, wheel spindle ... 33	2
2	MMN203	Nut, chain adjuster	2
3	MTK131	Chain adjuster c/w nut	2
4	MTK132	Freewheel	1
5	MMN204	Nut, hub, 8 mm. thick	1
6	MMW275	Plain washer, hub... ..	2
7	MTK133	Distance piece, 11 mm. long	1
8	MTK134	Retainer, felt seal	1
9	MTK135	Felt seal, bearing	1
10	MMW276	Shield washer, bearing	1
11	MTK136	Ball journal bearing ... 18	2
12	MTK127	Hub shell	1
13	MTK137	Distance piece, bearings	1
14	MTK138	Screwed bearing retainer	1
15	MTK144	Brake shoe c/w lining ... 97 + RMS	1 pr.
16	MTK146	Brake cam c/w nut	1
17	MTK145	Return spring, brake shoe	2
18	MTK140	Brake plate bare	1
S.A.	MTK141	Brake backplate, complete (Parts Nos. 15 to 20)	1
19	MTK186	Return spring, cam lever ... 36 40	1
20	MTK147	Lever, brake cam ... 34	1
21	MMN200	Nut, brake cam	1
22	MMP146	Bolt c/w nut, rear sprocket	6
23	MTK268	Sprocket, rear wheel, 54T	1
24	MMW266	Shakeproof washer, sprocket bolt	6
25	MTK139	Distance piece, 6 mm. long	1
26	MMN205	Nut, hub, 5 mm. thick	1
27	MTK130	Wheel spindle, rear	1
28	MMW101	Spacing washer, torque arm	2
29	MMP145	Screw c/w washer and wingnut, torque arm ... 3.6	1
30	MMW129	Spacing washer, hub	1

S.A. = Sub assembly
 N.I. = Not illustrated

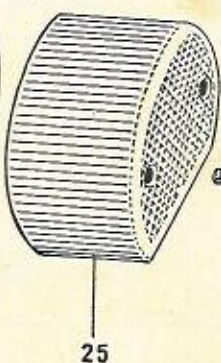
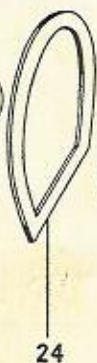
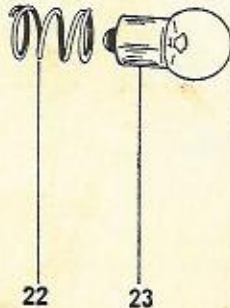
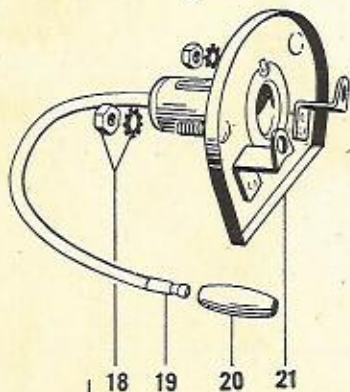
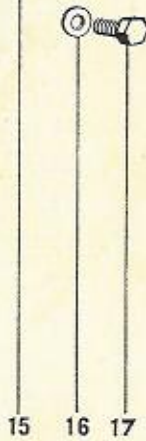
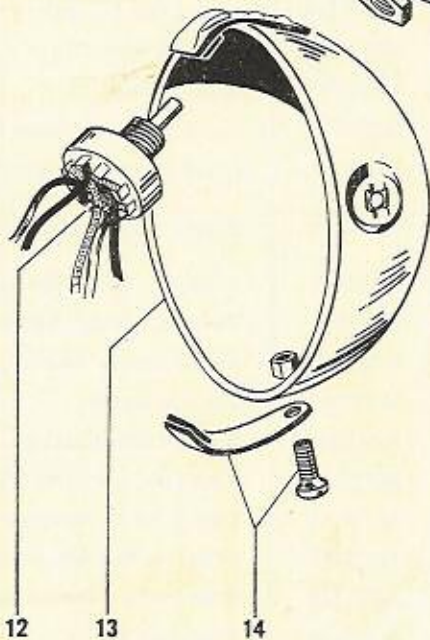
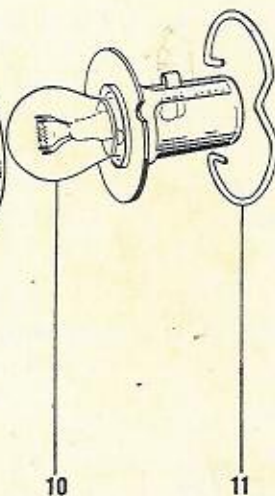
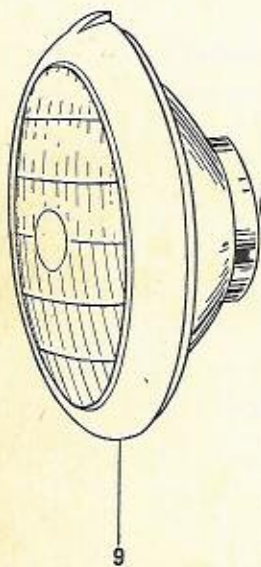
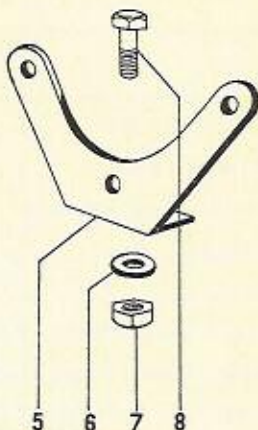
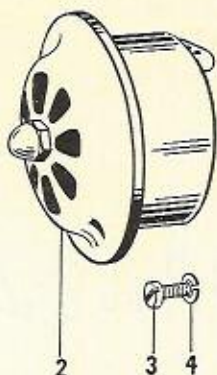
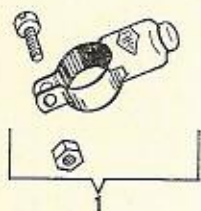
HANDLEBARS AND CONTROL CABLES GROUP 'J' MODEL RM9



HANDLEBARS AND CONTROL CABLES GROUP 'J' MODEL RM9

ILLUS. NO.	SALES NO.	DESCRIPTION	NUMBER OFF
1	MTN244	Handlebar, bare	1
2	MTN103	Expander bolt	1
3	MMW110	Washer, expander bolt	1
4	MTN104	Expander cone	1
5	MTN106	Brake lever	2
6	MKM116	Brake lever, fulcrum, R.H.	1
7	MKM117	Brake lever fulcrum, L.H.	1
8	MMB129	Bolt, lever fulcrum and fulcrum clip	4
9	MMN104	Nut, lever fulcrum	2
10	MMN127	Nut, fulcrum clip	2
11	MMW105	Plain washer	2
S.A.	MTN107	Brake lever, complete R.H. (Parts No. 6, 8 to 11 inclusive)	1
S.A.	MTN108	Brake lever, complete, L.H. (Parts No. 5, 7 to 11 inclusive)	1
12	} MTN245	Plastic grips (pair only) ... <i>113</i> -	1 pr.
13			
14	MTN111	Twistgrip body, top	1
15	MTN112	Twistgrip body, bottom	1
16	MMB273	Fixing screw, twistgrip body	2
17	MTN113	Friction spring	1
18	MMB257	Screw, friction spring	1
S.A.	MTN114	Twistgrip, complete (Parts No. 12, 14 to 18 inclusive)	1
19	MTN115	Choke lever, complete	1
20	MTN116	Front brake cable, complete	1
21	MTN119	Rear brake cable, complete	1
22	MTN118	Solderless nipple ... <i>7/4</i>	1
23	MTN121	Throttle cable, complete	1
24	MTN122	Decompressor cable, complete	1
25	MTN123	Choke cable, complete	1
26	MTN125	Solderless nipple ... <i>7/4</i>	1
27	MTN242	Cable terminal	2
N.I.	MTN126	Plastic sheath, control cables	2

S.A. = Sub-assembly
N.I. = Not illustrated



27

LIGHTING AND ELECTRIC HORN GROUP 'K' MODEL RM9

ILLUS. NO.	SALES NO.	DESCRIPTION	NUMBER OFF
1	MTP197	Horn button c/w screw and nut	1
2	MTP123	Electric horn kit complete	1
3	MMB300	Screw, 3 B.A., horn to bracket	3
4	MMW359	Spring washer, horn to bracket screw	3
5	MTP124	Bracket, horn mounting ... <i>HORN WITH...</i>	1
6	MMW101	Plain washer	1
7	MMN189	Self locking nut, horn bracket mounting bolt	1
8	MMB194	Bolt, horn bracket mounting	1
9	MTP209	Headlamp lens and reflector assembly	1
10	MTP219	Headlamp bulb, 6v. 15/15w. S.B.C.	1
11	MTP211	Spring ring, bulb holder retaining	1
12	MTP212	Lighting switch	1
13	MTP214	Headlamp shell c/w retaining nuts	1
14	MTP215	Clip and screw, headlamp lens retaining	1
15	MTP213	Knob, lighting switch	1
16	MMW101	Plain washer, headlamp securing bolt	2
17	MMB194	Bolt, headlamp securing	2
S.A.	MTP216	Headlamp c/w wiring harness	1
N.I.	MTP217	Wiring harness c/w bulb holder and switch	1
18	MMN234	Nut and washer, tail lamp fixing	2
19	MTP155	Connector nipple	1
20	MTP120	Connector	1
21	MTP156	Tail lamp backplate (to Frame No. 9R.5231)	1
21	MTP220	Tail lamp backplate (Frame No. 9R.5232 onwards)	1
22	MTP157	Bulb spring	1
23	MTP158	Bulb, tail lamp, 6v. 3w. S.C.C.	1
24	MTP159	Gasket, tail lamp lens	1
25	MTP160	Tail lamp lens c/w screws (to Frame No. 9R.5231)	1
25	MTP221	Tail lamp lens (Frame No. 9R.5232 onwards)	1
26	MMB315	Screw, tail lamp lens	2
27 →	MTP154	Tail lamp, complete (to Frame No. 9R.5231)	1
27	MTP222	Tail lamp, complete (Frame No. 9R.5232 onwards)	1
N.I.	MTP218	Grommet, headlamp shell	1

S.A. = Sub assembly
N.I. = Not illustrated

TOOLS

GROUP 'L'

MODEL RM9

GROUP NO.	SALES NO.	DESCRIPTION	NUMBER OFF
1	MTR101	Inflator	1
2	MTR105	Spanner, $\frac{1}{4}$ " \times $\frac{1}{8}$ " \times $\frac{1}{4}$ " B.S.F.	1
3	MTR107	Box spanner, sparking plug	1
4	MTR139	Ring spanner, $\frac{5}{16}$ " \times $\frac{1}{2}$ " B.S.F.	1
5	MTR106	Spanner, cylinder head nuts	1
6	MTR108	Spanner, 8 mm. \times 10 mm.	1
7	MTR110	Combination spanner, 12 mm. \times 14 mm.	1
8	MTR111	Combination spanner	1
9	BYC574	Toolbag	1
10	MTR280	Set of spanners (original equipment)	1

ACCESSORIES

GROUP 'M'

1	MTR303	Legshield kit	1
2	MTR113	Windscreen (de luxe)	1
3	BYD688	Pannier (L.H.) Royal Stewart	1
4	BYD689	Pannier (R.H.) Royal Stewart	1
5	MTR115	Speedometer kit	1
6	MTR116	Speedo cable complete (Huret)	1
7	MTR125	Speedo head	1
8	MTR126	Lens, speedometer	1
9	MTR127	Bezel, speedometer	1
10	MTR128	Joint, speedometer lens	1
11	MTR144	Drive unit, speedometer	1
12	MTR279	Mounting bracket c/w nut and bolt	1
13	MMN231	Nut, speedo head securing	1
14	RMM116	Touch up enamel (pearl grey or imperial red, state colour required)	1

GROUP NO.	SALES NO.	DESCRIPTION	NUMBER OFF
1	MTX134	Engine unit, less magneto, clutch, carburettor, exhaust system and sparking plug	1
2	MTX148	Engine unit, complete with magneto, clutch and carburettor, but less sparking plug and exhaust system	1
3	MTX149	Carburettor, complete with air cleaner, but less control cables	1
4	MTX117	Crankshaft, complete with small end bearing and gudgeon pin	1
5	MTX142	Stator plate, complete with coils, contact breaker and condenser, but less external ignition coil	1
6	MTX150	Clutch complete	1
7	MTX108	Clutch shoes, relined	1 pr.
8	MTX133	Brake shoes, relined, front wheel	1 pr.
9	MTX110	Brake shoes, relined, rear wheel	1 pr.
10	MTX151	Frame, bare	1
		Clutch drum, no service exchange is available, but new leaf springs can be fitted at our works.	

CONDITIONS OF SERVICE EXCHANGE

This service enables the exchange replacement units listed to be readily available to the owners of our machines.

Thus off-the-road time can be cut to a minimum and the owner also has the benefit of a unit overhauled to the most rigorous standards and guaranteed by the factory.

The attention of all concerned is drawn to the following points:—

1. The fullest details should be quoted of the model and type of machine for which the replacement unit is required.
2. This service is essentially an exchange service and only provides for the supply of a standard replacement unit in exchange for the original. It does not provide for the overhaul and return of individual units or for the supply of advance replacements.
3. We cannot undertake to return to the previous owner any component part of a displaced unit and no allowance can be made in respect of any new material which may have been fitted to the unit prior to exchange.
4. All replacement units are built to standard specifications and an extra charge will be made at the current retail price in respect of any component deficient from the displaced unit.
5. We reserve the right to make an extra charge, based on the current retail price, in respect of any major component of the displaced unit found to be damaged or broken due to accident or to be beyond repair.
6. Only units built within the limits of the standard specifications can be supplied and orders stipulating any particular or special specifications cannot be accepted through the medium of this service.
7. It is helpful to remind owners of their statutory obligation to notify their local licensing authority of any change in frame or engine number which may be involved.

RM9 NUMERICAL INDEX

SALES No.	GROUP	ILLUS. No.	SALES No.	GROUP	ILLUS. No.	SALES No.	GROUP	ILLUS. No.			
BYA440	...	G	N.I.	MMN152	...	A	82	MMW203	...	B	N.I.
BYC574	...	L	9	MMN154	...	A	71	MMW204	...	B	N.I.
BYD688	...	M	4	MMN154	...	G	40	MMW205	...	B	N.I.
BYD689	...	M	5	MMN164	...	B	1	MMW207	...	B	12
BZM852	...	G	5	MMN171	...	E	36	MMW231	...	E	5
MKM116	...	J	6	MMN180	...	C	9	MMW232	...	E	9
MKM117	...	J	7	MMN181	...	C	23	MMW233	...	E	35
MMB117	...	G	26	MMN187	...	Fa	13	MMW234	...	E	42
MMB129	...	J	8	MMN187	...	Fb	20	MMW245	...	C	2
MMB140	...	G	15	MMN188	...	Fa	23	MMW246	...	C	2
MMB145	...	A	50	MMN188	...	Fb	30	MMW247	...	C	12
MMB146	...	A	52	MMN189	...	Fa	28	MMW248	...	C	22
MMB147	...	A	67	MMN189	...	Fb	35	MMW265	...	Fa	17
MMB151	...	A	54	MMN189	...	K	7	MMW265	...	Fb	24
MMB153	...	A	58	MMN196	...	H	1	MMW266	...	A	59
MMB153	...	A	64	MMN198	...	H	7	MMW266	...	A	63
MMB165	...	B	6	MMN200	...	I	21	MMW266	...	I	24
MMB171	...	E	34	MMN201	...	H	15	MMW272	...	H	2
MMB177	...	C	11	MMN202	...	I	1	MMW273	...	H	8
MMB178	...	C	28	MMN203	...	I	2	MMW275	...	I	6
MMB192	...	Fa	15	MMN204	...	I	5	MMW276	...	I	10
MMB192	...	Fb	22	MMN205	...	I	26	MMW289	...	G	43
MMB193	...	Fa	25	MMN219	...	G	16	MMW307	...	D	9
MMB193	...	Fb	32	MMN221	...	A	77	MMW308	...	D	13
MMB194	...	Fa	26	MMN226	...	D	10	MMW359	...	K	4
MMB194	...	Fb	33	MMN227	...	D	20	MMW360	...	G	21
MMB194	...	K	8	MMN231	...	M	14	MMW361	...	B	13
MMB194	...	K	17	MMN234	...	K	18	MMW368	...	H	6
MMB195	...	Fb	4	MMN249	...	B	25	MMW369	...	H	4
MMB196	...	Fb	7	MMN260	...	H	3	MMW370	...	H	5
MMB206	...	G	12	MMN276	...	E	28	MMW372	...	G	8
MMB236	...	D	7	MMP132	...	E	40	MMW395	...	A	2
MMB237	...	D	8	MMP135	...	E	27	MMW396	...	A	7
MMB238	...	D	12	MMP136	...	G	37	MMW397	...	A	72
MMB257	...	J	18	MMP137	...	G	2	MMW398	...	A	81
MMB273	...	J	16	MMP142	...	C	25	MTA105	...	A	20
MMB278	...	G	44	MMP145	...	I	29	MTA106	...	A	19
MMB281	...	G	33	MMP146	...	I	22	MTA107	...	A	21
MMB300	...	K	3	MMP149	...	G	32	MTA108	...	A	23
MMB313	...	A	1	MMW101	...	Fa	27	MTA109	...	A	24
MMB314	...	A	75	MMW101	...	Fb	34	MTA110	...	A	25
MMB315	...	K	26	MMW101	...	I	28	MTA111	...	A	26
MML101	...	Fa	22	MMW101	...	K	6	MTA112	...	A	S.A.
MML101	...	Fb	29	MMW101	...	K	16	MTA113	...	A	27
MML106	...	H	13	MMW105	...	G	11	MTA115	...	A	28
MML107	...	B	5	MMW105	...	J	11	MTA116	...	A	29
MMN104	...	J	9	MMW105	...	J	11	MTA117	...	A	30
MMN127	...	J	10	MMW110	...	J	3	MTA118	...	A	17
MMN146	...	A	8	MMW129	...	I	30	MTA119	...	A	16
MMN147	...	A	13	MMW139	...	G	13	MTA120	...	A	15
MMN148	...	A	9	MMW157	...	Fb	5	MTA121	...	A	18
MMN148	...	A	41	MMW165	...	A	22	MTA122	...	A	31
MMN149	...	A	68	MMW168	...	A	47	MTA123	...	A	32
MMN152	...	A	60	MMW169	...	A	47	MTA124	...	A	32
MMN152	...	A	62	MMW170	...	A	47	MTA125	...	A	33
				MMW171	...	A	42	MTA126	...	A	34
				MMW172	...	A	10	MTA127	...	A	35
				MMW176	...	A	39	MTA128	...	A	37
				MMW181	...	A	14	MTA130	...	A	40
				MMW182	...	G	39	MTA131	...	A	45
				MMW202	...	B	18	MTA132	...	A	46

RM9 NUMERICAL INDEX

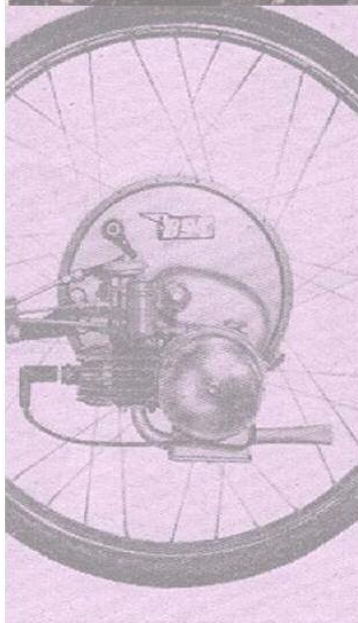
SALES No.	GROUP	ILLUS. No.	SALES No.	GROUP	ILLUS. No.	SALES No.	GROUP	ILLUS. No.			
MTA134	...	A	43	MTD188	...	E	15	MTH128	...	C	34
MTA135	...	A	44	MTD189	...	E	16	MTH195	...	C	3
MTA136	...	A	51	MTD190	...	E	14	MTH196	...	C	4
MTA139	...	A	70	MTD191	...	E	19	MTH197	...	C	5
MTA144	...	A	N.I.	MTD192	...	E	21	MTH216	...	C	7
MTA158	...	A	36	MTD195	...	E	24	MTH217	...	C	1
MTA159	...	A	38	MTD196	...	E	25	MTH219	...	C	17
MTA162	...	A	53	MTD197	...	E	3	MTH220	...	C	S.A.
MTA165	...	A	66	MTD198	...	E	4				
MTA167	...	A	61	MTD199	...	E	2	MTJ102	...	Fa	2
MTA176	...	A	11	MTD200	...	E	37	MTJ103	...	Fa	3
MTA267	...	A	48	MTD201	...	E	38	MTJ103	...	Fb	9
MTA268	...	A	49	MTD202	...	E	41	MTJ104	...	Fa	4
MTA269	...	A	S.A.	MTD203	...	E	39	MTJ104	...	Fb	10
MTA284	...	A	12	MTD204	...	E	S.A.	MTJ105	...	Fa	5
MTA288	...	A	3	MTD211	...	E	6	MTJ105	...	Fb	11
MTA289	...	A	4	MTD220	...	E	20	MTJ106	...	Fb	6
MTA290	...	A	5	MTD232	...	E	22	MTJ106	...	Fb	12
MTA291	...	A	6	MTD233	...	E	23	MTJ108	...	Fa	8
MTA292	...	A	55	MTD244	...	E	1	MTJ108	...	Fb	14
MTA293	...	A	56	MTD245	...	E	11	MTJ111	...	Fa	10
MTA294	...	A	57	MTD246	...	E	17	MTJ111	...	Fb	17
MTA295	...	A	65	MTD247	...	E	18	MTJ112	...	Fa	11
MTA296	...	A	69	MTD248	...	E	22	MTJ112	...	Fb	18
MTA297	...	A	73	MTD249	...	E	23	MTJ113	...	Fa	12
MTA298	...	A	74	MTD250	...	E	26	MTJ113	...	Fb	19
MTA299	...	A	76	MTD251	...	E	S.A.	MTJ114	...	Fa	S.A.
MTA300	...	A	78	MTD252	...	E	13	MTJ115	...	Fa	14
MTA301	...	A	79	MTD253	...	E	12	MTJ115	...	Fb	21
MTA302	...	A	80					MTJ116	...	Fa	16
MTA303	...	A	S.A.	MTF103	...	G	38	MTJ116	...	Fb	23
				MTF105	...	G	4	MTJ117	...	Fa	18
MTB106	...	B	17	MTF106	...	G	3	MTJ117	...	Fb	25
MTB107	...	B	19	MTF107	...	G	1	MTJ118	...	Fa	19
MTB108	...	B	20	MTF111	...	G	20	MTJ118	...	Fb	26
MTB109	...	B	26	MTF123	...	G	35	MTJ119	...	Fa	20
MTB110	...	B	9	MTF125	...	G	19	MTJ119	...	Fb	27
MTB112	...	B	8	MTF164	...	G	36	MTJ120	...	Fa	21
MTB117	...	B	22	MTF181	...	G	18	MTJ120	...	Fb	28
MTB118	...	B	21	MTF182	...	G	34	MTJ121	...	Fa	S.A.
MTB119	...	B	24					MTJ121	...	Fb	S.A.
MTB121	...	B	3	MTH106	...	C	8	MTJ122	...	Fa	24
MTB122	...	B	4	MTH107	...	C	10	MTJ122	...	Fb	31
MTB123	...	B	7	MTH108	...	C	13	MTJ123	...	Fa	29
MTB124	...	B	10	MTH109	...	C	14	MTJ123	...	Fb	36
MTB125	...	B	16	MTH110	...	C	15	MTJ124	...	Fb	1
MTB126	...	B	15	MTH111	...	C	16	MTJ125	...	Fb	2
MTB127	...	B	14	MTH113	...	C	18	MTJ126	...	Fb	3
MTB128	...	B	11	MTH114	...	C	19	MTJ127	...	Fb	6
MTB130	...	B	27	MTH115	...	C	20	MTJ128	...	Fb	8
MTB153	...	B	2	MTH116	...	C	21	MTJ130	...	Fb	S.A.
MTB154	...	B	23	MTH117	...	C	24	MTJ177	...	Fa	9
MTB155	...	B	S.A.	MTH118	...	C	26	MTJ177	...	Fb	15
				MTH119	...	C	27	MTJ181	...	Fa	1
MTD177	...	E	33	MTH120	...	C	27	MTJ195	...	Fa	7
MTD178	...	E	7	MTH121	...	C	27	MTJ196	...	Fb	13
MTD179	...	E	8	MTH122	...	C	27				
MTD181	...	E	30	MTH123	...	C	29	MTK102	...	H	N.I.
MTD182	...	E	10	MTH124	...	C	30	MTK102	...	I	N.I.
MTD184	...	E	29	MTH125	...	C	31	MTK104	...	H	N.I.
MTD185	...	E	31	MTH126	...	C	32	MTK104	...	I	N.I.
MTD186	...	E	32	MTH127	...	C	33	MTK107	...	H	N.I.

RM9 NUMERICAL INDEX

SALES No.	GROUP	ILLUS. No.	SALES No.	GROUP	ILLUS. No.	SALES No.	GROUP	ILLUS. No.			
MTK107	...	I	N.I.	MTL323	...	G	30	MTP123	...	K	2
MTK112	...	H	9	MTL324	...	G	31	MTP124	...	K	5
MTK124	...	H	14	MTL325	...	G	29	MTP154	...	K	27
MTK126	...	I	N.I.	MTL326	...	G	N.I.	MTP155	...	K	19
MTK127	...	I	12	MTL327	...	G	42	MTP156	...	K	21
MTK129	...	I	S.A.	MTL328	...	G	7	MTP157	...	K	22
MTK130	...	I	27	MTL329	...	G	N.I.	MTP158	...	K	23
MTK131	...	I	3	MTL330	...	G	N.I.	MTP159	...	K	24
MTK132	...	I	4	MTL331	...	G	N.I.	MTP160	...	K	25
MTK133	...	I	7					MTP161	...	D	21
MTK134	...	I	8					MTP162	...	D	22
MTK135	...	I	9	MTM122	...	D	29	MTP197	...	K	1
MTK136	...	I	11	MTM129	...	D	2	MTP209	...	K	9
MTK137	...	I	13	MTM130	...	D	3	MTP211	...	K	11
MTK138	...	I	14	MTM131	...	D	4	MTP212	...	K	12
MTK139	...	I	25	MTM132	...	D	5	MTP213	...	K	15
MTK140	...	I	18	MTM133	...	D	6	MTP214	...	K	13
MTK141	...	I	S.A.	MTM134	...	D	11	MTP215	...	K	14
MTK144	...	I	15	MTM135	...	D	14	MTP216	...	K	S.A.
MTK145	...	H	20	MTM136	...	D	15	MTP217	...	K	N.I.
MTK145	...	I	17	MTM137	...	D	16	MTP218	...	K	N.I.
MTK146	...	I	16	MTM138	...	D	17	MTP219	...	K	10
MTK147	...	I	20	MTM139	...	D	18	MTP220	...	K	21
MTK186	...	I	19	MTM143	...	D	23	MTP221	...	K	25
MTK193	...	H	N.I.	MTM144	...	D	24	MTP222	...	K	27
MTK196	...	H	10	MTM145	...	D	25				
MTK197	...	H	11	MTM146	...	D	26	MTR101	...	L	1
MTK200	...	H	21	MTM147	...	D	27	MTR105	...	L	2
MTK201	...	H	19	MTM148	...	D	28	MTR106	...	L	5
MTK203	...	H	16	MTM151	...	D	S.A.	MTR107	...	L	3
MTK258	...	H	17	MTM157	...	D	1	MTR108	...	L	6
MTK259	...	H	N.I.	MTM158	...	D	S.A.	MTR110	...	L	7
MTK260	...	H	S.A.	MTM159	...	D	19	MTR111	...	L	8
MTK261	...	H	12					MTR113	...	M	3
MTK262	...	H	22	MTN103	...	J	2	MTR115	...	M	6
MTK263	...	H	18	MTN104	...	J	4	MTR116	...	M	7
MTK264	...	H	S.A.	MTN106	...	J	5	MTR125	...	M	8
MTK266	...	I	N.I.	MTN107	...	J	S.A.	MTR126	...	M	9
MTK267	...	I	S.A.	MTN108	...	J	S.A.	MTR127	...	M	10
MTK268	...	I	23	MTN111	...	J	14	MTR128	...	M	11
				MTN112	...	J	15	MTR139	...	L	4
MTL102	...	G	9	MTN113	...	J	17	MTR144	...	M	12
MTL119	...	G	23	MTN114	...	J	S.A.	MTR149	...	M	2
MTL121	...	G	10	MTN115	...	J	19	MTR279	...	M	13
MTL123	...	G	14	MTN116	...	J	20	MTR280	...	L	10
MTL126	...	G	27	MTN118	...	J	22	MTR301	...	D	30
MTL128	...	G	17	MTN119	...	J	21	MTR303	...	M	1
MTL144	...	G	N.I.	MTN121	...	J	23				
MTL149	...	G	N.I.	MTN122	...	J	24	MTX108	...	N	7
MTL151	...	G	41	MTN123	...	J	25	MTX110	...	N	9
MTL152	...	G	6	MTN125	...	J	26	MTX117	...	N	4
MTL153	...	G	22	MTN126	...	J	N.I.	MTX133	...	N	8
MTL154	...	G	24	MTN242	...	J	27	MTX134	...	N	1
MTL155	...	G	28	MTN243	...	G	N.I.	MTX142	...	N	5
MTL156	...	G	25	MTN244	...	J	1	MTX148	...	N	2
MTL157	...	G	N.I.	MTN245	...	J	12	MTX149	...	N	3
MTL158	...	G	N.I.					MTX150	...	N	6
MTL160	...	G	N.I.					MTX151	...	N	10
MTL161	...	G	N.I.								
MTL270	...	C	6	MTP120	...	K	20	RMM116	...	M	15



IceniCAM Information Service



www.icenicam.org.uk