

# RALEIGH INDUSTRIES LIMITED

J STEVENSON

A  COMPANY

## SPARE PARTS SUPPLEMENT

for RALEIGH 'RUNABOUT' MODEL RM.6.

CANADIAN SPECIFICATION - NEPTUNE BLUE FINISH - STANDARD MODEL  
- ROYAL CARMINE FINISH - DE-LUXE MODEL

The spare parts illustrated and described in this supplement replace the ones in the Catalog MTR271. Please detach the sections of this supplement and stick them over the corresponding groups in the Catalog. The pages are numbered to agree with the Catalog page numbers, i.e. page 10 of the supplement replaces page 10 of the Catalog etc.

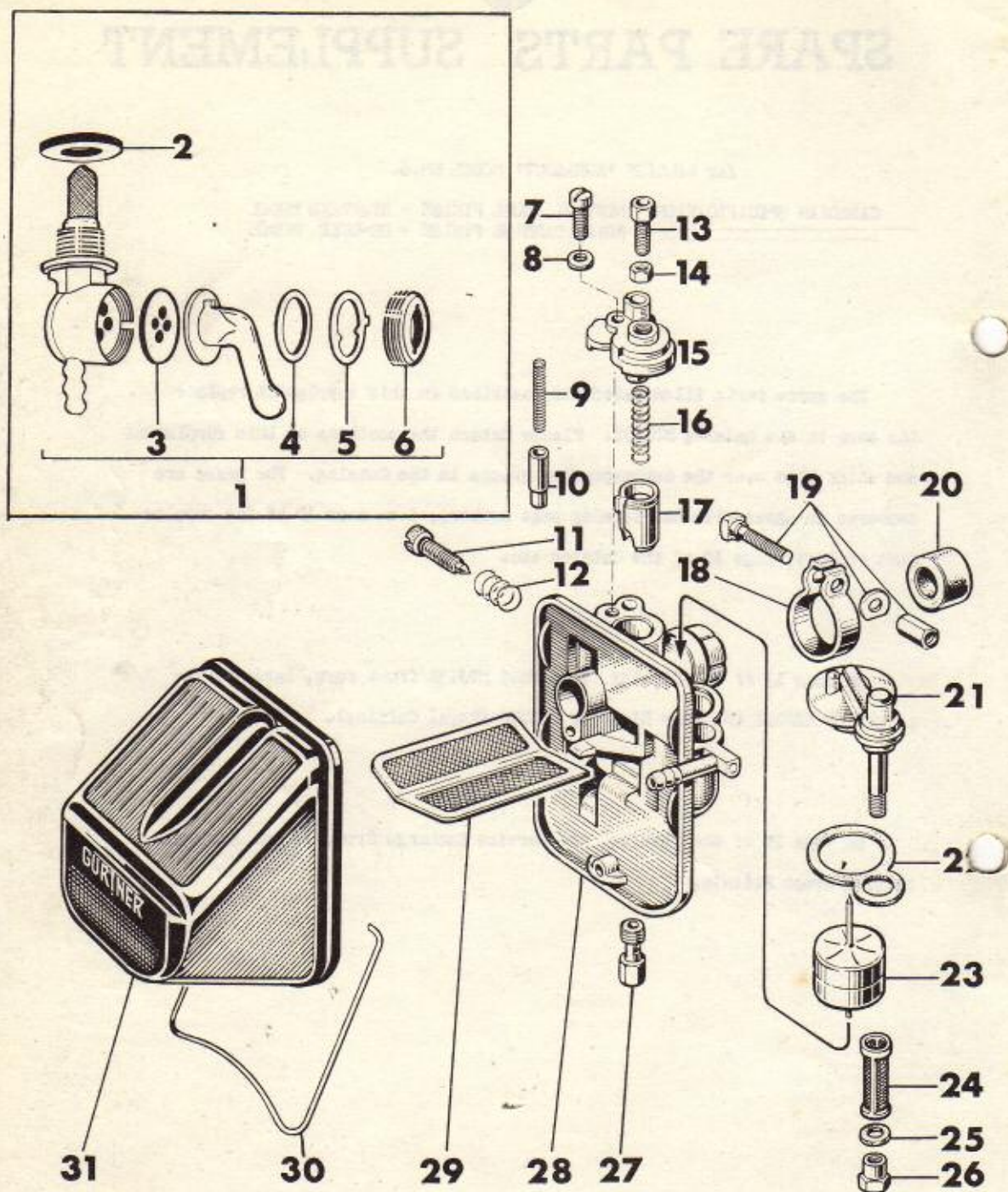
On page 17 of the Catalog, item No.1 MTJ131 front fork, bare: is replaced by MTJ211 (Neptune Blue) or MTJ210 (Royal Carmine).

On page 29 of the Catalog, the Service Exchange Group is not applicable outside Great Britain.

Issued by:- PARTS & SERVICE DEPARTMENT.  
MARCH, 1966.

6201042





# CARBURETTOR AND FUEL TAP

# GROUP 'C'

Type AR2-10-667

Illus. No.	Sales No.	Description.	No. Off
1	MTH217	Fuel tap	1
2	MTH245	Fibre washer, fuel tap, 1/16"	V
or 2	MTH246	Fibre washer, fuel tap, 3/32"	V
3	MTH195	Cork seal, fuel tap	1
4	MTH196	Fibre seal, tap lever	1
5	MTH197	Spring, fuel tap seal	1
6	MTH270	Screwed retainer, tap lever	1
N.I.	MTH216	Fuel pipe	1
7	MTH235	Screw, mixing chamber cover	1
8	MTH263	Washer, mixing chamber cover screw	1
9	MTH110	Return spring, enrichment plunger	1
10	MTH111	Enrichment plunger	1
11	MTH229	Adjusting screw, slow running	1
12	MTH123	Spring, adjusting screw	1
13	MTH106	Adjuster, throttle cable	1
14	MTH180	Locknut, cable adjuster	1
15	MTH231	Mixing chamber cover	1
16	MTH108	Return spring, throttle slide	1
17	MTH239	Throttle slide	1
18	MTH117	Clip, carburettor stub	1
19	MTH142	Clip bolt, c/w nut and washer	1
20	MTH118	Insulating sleeve, carburettor stub	1
21	MTH232	Float chamber cover	1
22	MTH234	Joint, float chamber cover	1
23	MTH225	Float	1
24	MTH115	Fuel filter gauze	1
25	MTH242	Fibre washer, cap nut	1
26	MTH233	Cap nut, float chamber cover	1
27	MTH224	Main jet, No.20.5	1
or 27	MTH223	Main jet, No.21	1
or 27	MTH237	Main jet, No.22	1
28	MTH238	Carburettor, complete (Parts No.7 to 31)	1
29	MTH128	Air cleaner gauze	1
30	MTH228	Spring clip, air cleaner	1
31	MTH236	Air cleaner, complete (Parts No.29 to 31)	1

V = Varies  
 N.I. = Not illustrated



UNCLASSIFIED

UNCLASSIFIED

UNCLASSIFIED

UNCLASSIFIED

UNCLASSIFIED

UNCLASSIFIED

UNCLASSIFIED

UNCLASSIFIED

UNCLASSIFIED

UNCLASSIFIED

UNCLASSIFIED

UNCLASSIFIED

UNCLASSIFIED

UNCLASSIFIED

UNCLASSIFIED

UNCLASSIFIED

UNCLASSIFIED

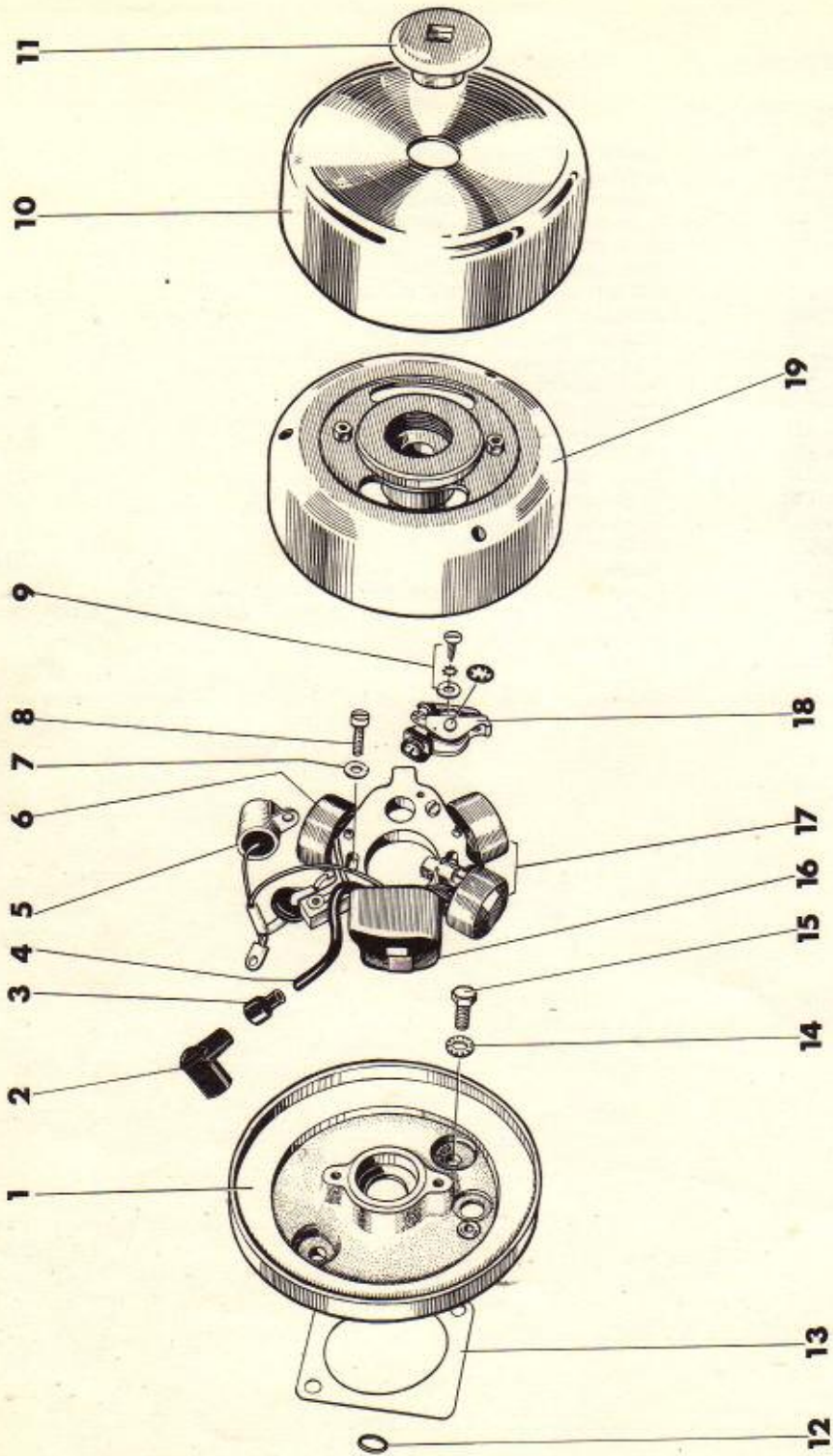
UNCLASSIFIED

UNCLASSIFIED

UNCLASSIFIED



# FLYWHEEL MAGNETO GROUP 'D'



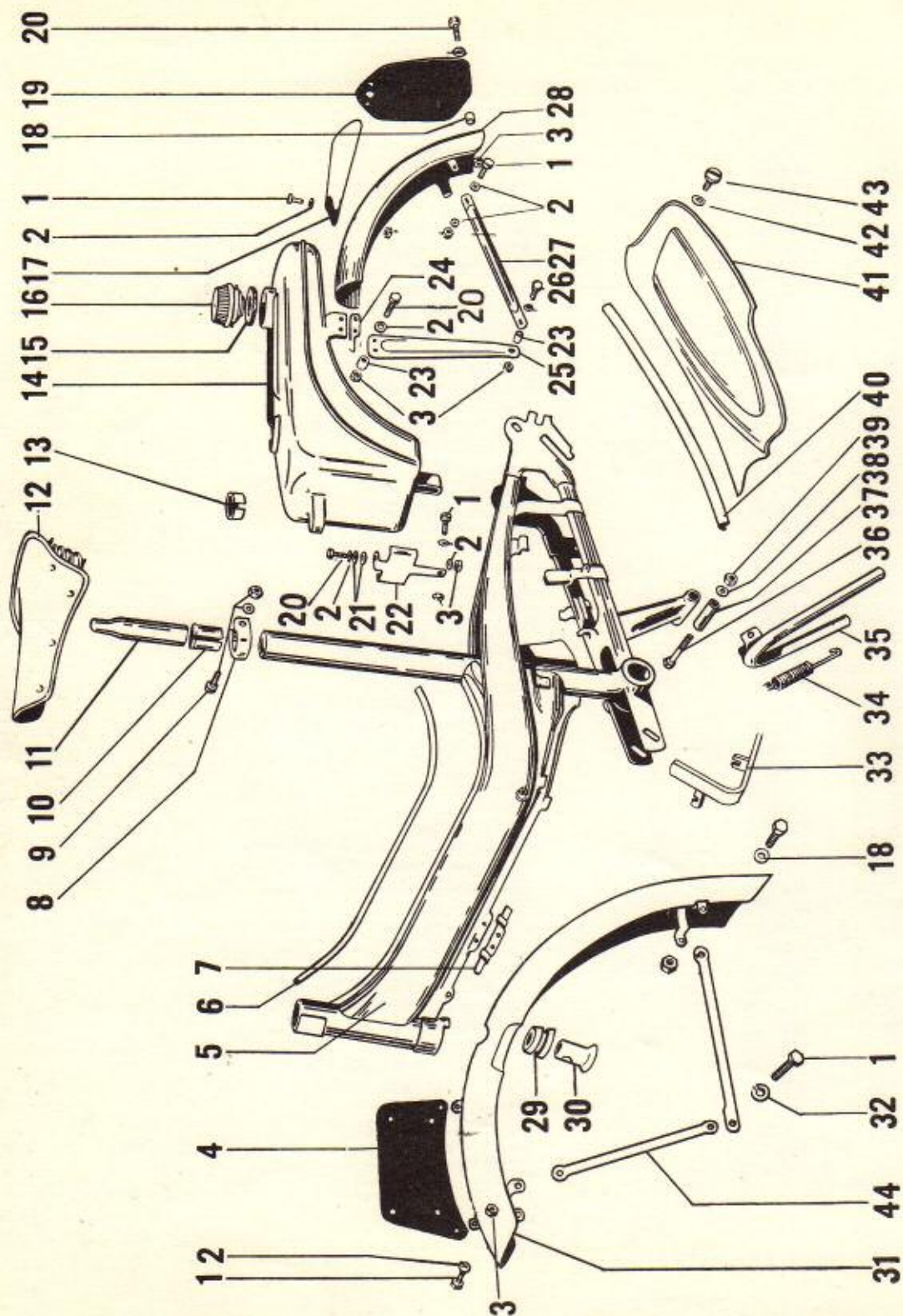


# FLYWHEEL MAGNETO GROUP 'D'

Illus. No.	Sales No.	Description.	No.Off.
1	MTM175	Stator backplate, bare	1
2	MTM153	Suppressor cap	1
3	MTM183	Rubber sleeve for suppressor	1
4	MTM182	High tension lead, 12" long	1
5	MTM173	Capacitor	1
6	MTM176	Stop light coil and lead	1
7	MMW247	Washer, stator fixing screw	2
8	MMB250	Screw, stator fixing	2
9	MTM180	Contact breaker fixing set	1
10	MTM174	Flywheel cover	1
11	MMB227	Nut, flywheel	1
12	MTM137	Sealing ring, stator backplate	1
13	MTM168	Gasket, stator backplate	1
14	MMW266	Washer, stator backplate bolt	2
15	MMB176	Bolt, stator backplate	2
16	MTM178	High tension coil	1
17	MTM177	Lighting coils (pair)	1
18	MTM172	Contact breaker set	1
19	MTM170	Flywheel	1
S.A.	MTM169	Magneto complete (less stator backplate)	1
S.A.	MTM171	Stator assembly, c/w coils, contact breaker and capacitor	1
N.I.	MTM179	Capacitor fixing set	1
N.I.	MTM181	Grease pad set	1

S.A. = Sub assembly  
 N.I. = Not illustrated

# FRAME, FUEL TANK AND MUDGUARDS GROUP 'G'





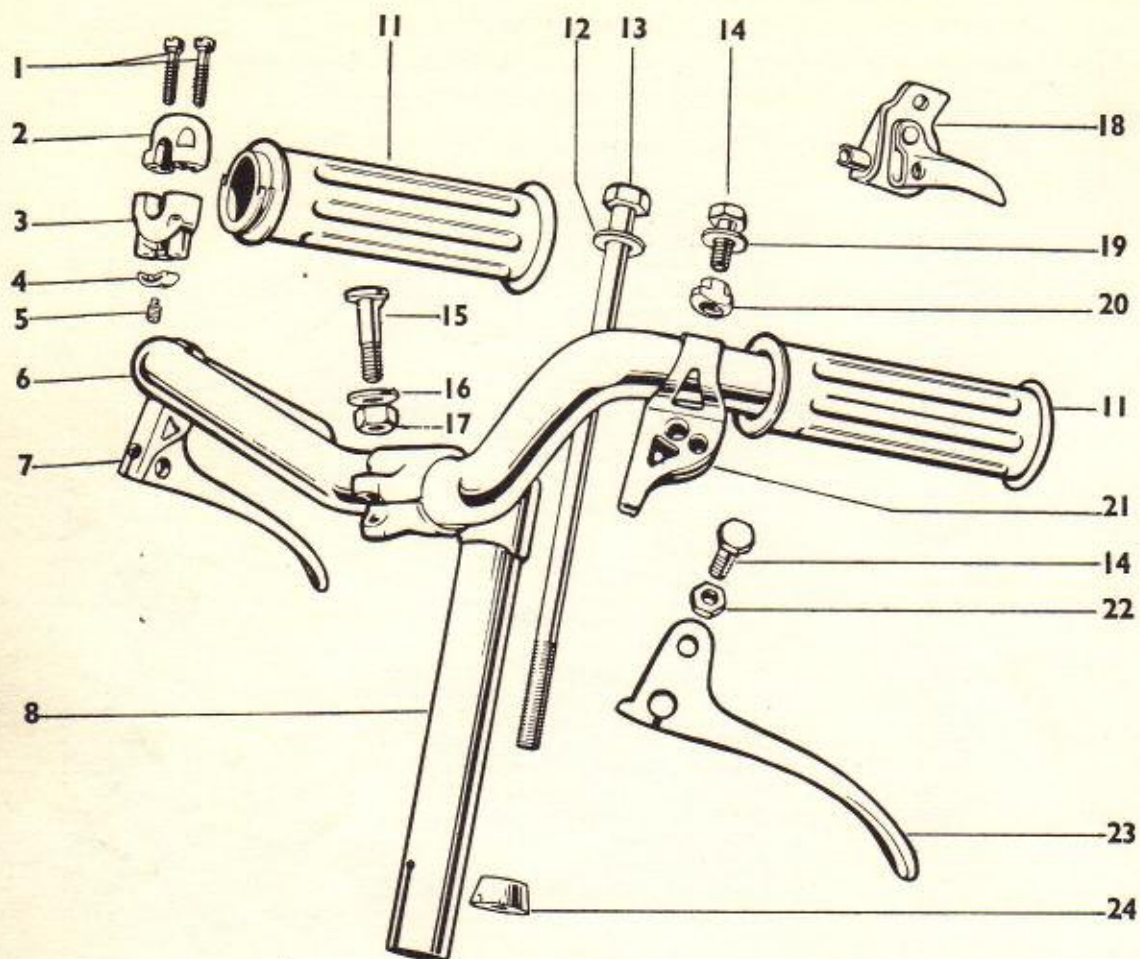
# FRAME, FUEL TANK AND MUDGUARDS GROUP 'G'

Illus. No.	Sales No. Std. Model	Sales No. De-luxe Model	Description.	No. Off
1	MF206		Bolt, $\phi$ 3/16" x 1/2"	13
2	MF105		Plain washer, $\phi$ 3/16"	23
3	MF219		Nut, $\phi$ 3/16"	26
4	MTL476		Front number plate	1
5	MF196	MTF194	Frame	1
6	MF125		Metallic trim strip	1
7	MF111		Bracket, cable retaining	1
8	MF107		Clip, saddle pillar	1
9	MF138		Bolt, complete, saddle pillar clip	1
10	MF106		Liner, seat tube	1
11	MF105		Saddle pillar	1
12	BZM852		Saddle	1
N.I.	BYM440		Saddle cover	1
13	MTL152		Rubber mounting strip, fuel tank	1
14	MTL407	MTL393	Fuel tank	1
15	MFN372		Sealing washer, filler cap	1
16	MTL408	MTL102	Fuel filler cap	1
17	MTL400	MTL388	Tail piece	1
18	MFN139		Spacer, 1/8" thick	5
19	MTL122		Rear number plate	1
20	MFN140		Bolt, $\phi$ 3/16" x 3/4"	6
21	MFN360		Rubber washers, splash plate bolt	4
22	MTL401	MTL394	Splash plate	1
23	MTL119		Spacer, 1/4" thick	6
24	MTL154		Pump peg	1
25	MTL405	MTL395	Tank support stay	2
26	MFN117		Bolt, $\phi$ 3/16" x 7/8"	2
27	MTL404	MTL283	Mudguard stay	2
28	MTL399	MTL390	Rear mudguard	1
29	MTL146		Grommet, mudguard mounting	1
30	MTL147		Tube, mudguard mounting	1
31	MTL474	MTL389	Front mudguard	1
32	MFN233		Spring washer, $\phi$ 3/16"	2
33	MF197	MTF169	Vee belt guard	1
34	MF123		Spring, centre stand	1
35	MF164		Centre stand	1
36	MF136		Bolt, centre stand, complete	1
37	MF103		Distance piece, centre stand	1
38	MFN182		Shakeproof washer, $\phi$ 7 mm.	1
39	MFN154		Nut, $\phi$ 7 mm.	1
40	MTL149		Plastic edging strip, L.H. 1 1/4"	1
41	MTL402	MTL391	Fairing, L.H.	1
N.I.	MTL403	MTL392	Fairing, R.H.	1
N.I.	MTL151		Plastic edging strip, R.H. 1 1/8"	1
42	MFN289		Shakeproof washer, $\phi$ 5 mm.	6
43	MF278		Fairing screw	6
44	MTL404	MTL283	Mudguard stay	4
N.I.	MTL157		RALEIGH trade mark transfer	1
N.I.	MTL144		Fuel ratio transfer	1
N.I.	MTL396		Frame transfer	2
N.I.	MTL397		Fairing transfer	2
N.I.	MTL160		Tank transfer, L.H.	1
N.I.	MTL161		Tank transfer, R.H.	1

N.I. = Not illustrated  
 $\phi$  = Diameter



# HANDLEBARS AND CONTROL CABLES GROUP 'J'



25  
**DECOMPRESSOR CABLE COMPLETE**

26  
**FRONT BRAKE CABLE COMPLETE**

9  
10  
27  
**REAR BRAKE CABLE COMPLETE**

28  
**THROTTLE CABLE COMPLETE**

29  
**CHOKE CABLE COMPLETE**

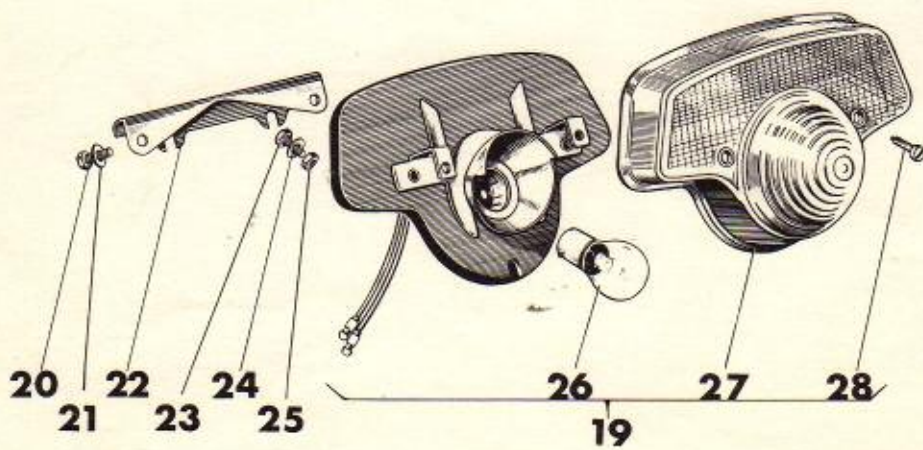
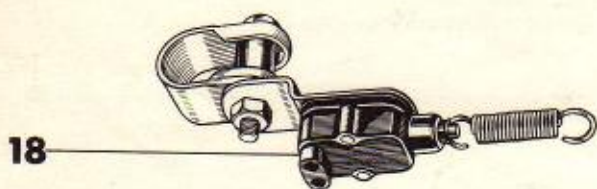
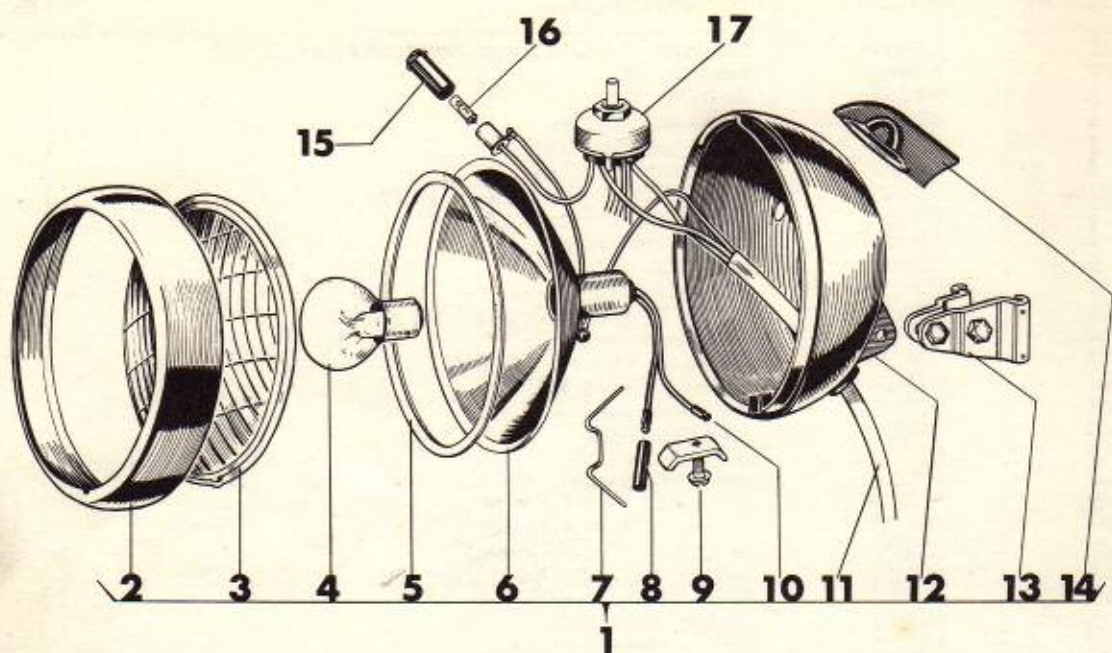
# HANDLEBARS AND CONTROL CABLES GROUP 'J'

Illus. No.	Sales No.	Description.	No. Off.
1	MMB273	Fixing screw, twistgrip body	2
2	MTN111	Twistgrip body, top	1
3	MTN112	Twistgrip body, bottom	1
4	MTN113	Friction spring	1
5	MMB257	Screw, friction spring	1
S.A.	MTN114	Twistgrip, complete	1
6	MTN101	Handlebar, bare	1
7	MMN116	Brake lever fulcrum, right-hand	1
8	MTN257	Handlebar stem, c/w expander and clamp bolts	1
9	MTN118	Solderless nipple	1
10	MTN250	Adjuster complete, rear brake cable	1
11	MTN245	Handlebar grips	lpr.
12	MTW110	Washer, expander bolt	1
13	MTN254	Expander bolt, c/w cone and washer	1
14	MMB129	Bolt, lever fulcrum and clip	4
15	MMB108	Clamp bolt, handlebar	1
16	MTW109	Washer, clamp bolt	1
17	MMN109	Nut, clamp bolt	1
18	MTN115	Choke lever	1
19	MTW105	Plain washer, 3/16"	2
20	MMN127	Nut, fulcrum clip	2
21	MMN117	Brake lever fulcrum, left-hand	1
22	MMN104	Nut, brake lever fulcrum	2
23	MTN258	Brake lever	2
S.A.	MTN107	Brake lever complete, right-hand	1
S.A.	MTN108	Brake lever complete, left-hand	1
24	MTN104	Expander cone	1
25	MTN122	Decompressor cable, complete	1
26	MTN139	Front brake cable, complete	1
27	MTN140	Rear brake cable, complete	1
28	MTN121	Throttle cable, complete	1
29	MTN123	Choke cable, complete	1
30	MTN125	Solderless nipple	1
N.I.	MTN126	Plastic sheath, control cable	2

S.A. = Sub assembly  
N.I. = Not illustrated



# LIGHTING GROUP 'K'



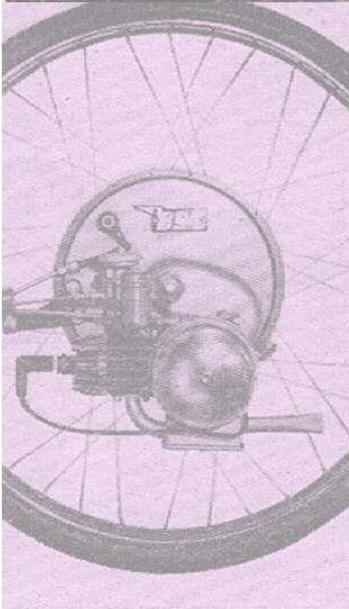
# LIGHTING GROUP 'K'

Illus.No.	Sales No.	Description.	No.Off.
1	MTP250	Headlamp complete (less mounting bracket)	1
2	MTP262	Headlamp rim	1
3	MTP263	Headlamp lens	1
4	MTP264	Bulb, 6v. 18/18w.	1
5	MTP265	Seal, headlamp lens	1
6	MTP266	Reflector, headlamp	1
S.A.	MTP267	Lighting unit (Parts 2,3,5,6 and 7)	1
7	MTP268	Clip, headlamp reflector	4
8	MIF120	Rubber connector	6
9	MTP269	Rim clamp screw	1
10	MTP155	Connector nipple	14
11	MTP270	Wiring harness, c/w lighting switch	1
12	MTP271	Body, headlamp	1
13	MTP153	Mounting bracket, headlamp	1
14	MTP213	Knob, lighting switch	1
15	MTP272	Indicator lens unit	1
16	MTP273	Indicator bulb	1
17	MTP212	Lighting switch	1
18	MTP227	Stop-lamp switch, c/w spring and clamp	1
19	MTP252	Stop-tail lamp, complete	1
20	MTP353	Screw, tail lamp fixing	2
21	MTP313	Washer, tail lamp fixing	2
22	MTP254	Adaptor bracket, tail lamp	1
23	MTP206	Bolt, tail-lamp bracket	2
24	MTP105	Washer, tail lamp bracket	2
25	MTP219	Nut, tail-lamp bracket	2
N.I.	MTP255	Backplate, tail-lamp	1
26	MTP260	Bulb, stop-tail lamp, 6v 18/6w	1
27	MTP258	Lens, tail lamp	1
28	MTP355	Screw, tail lamp lens	2
N.I.	MTP251	Electric horn, c/w button and bracket	1
N.I.	MTP127	Bracket, horn mounting	1
N.I.	MTP197	Horn button	1

S.A. = Sub assembly  
 N.I. = Not illustrated



# IceniCAM Information Service



[www.icenicam.org.uk](http://www.icenicam.org.uk)