

R0114Q

RALEIGH

Supermatic

MOPED

MODEL RM5

SPARE PARTS LIST

Including PHILLIPS GADABOUT Mk. IV MOPED, MODEL PM2
and NORMAN LIDO Mk. III MOPED, MODEL NM2

MTR 270

PRICE 5/-

RALEIGH

Supernatic

MOPED

MODEL RM5

SPARE PARTS LIST

**Including PHILLIPS GADABOUT Mk. IV MOPED, MODEL PM2
and NORMAN LIDO Mk. III MOPED, MODEL NM2**

MTR 270

RALEIGH INDUSTRIES LIMITED

A member of the  Group of Companies

**LENTON BOULEVARD
NOTTINGHAM**

**Telephone: NOTTINGHAM 77761 Telegrams: RALIND, NOTTINGHAM
Telex: NOTTINGHAM 37681**

**Issued by:— Raleigh Industries Limited, Service Headquarters,
Motor Service Department, Lenton Boulevard,
NOTTINGHAM.**

CONTENTS

	Group	Page
Engine and exhaust	A	4
Automatic clutch and variable pulley	B	8
Carburettor and fuel tap	C	10
Flywheel magneto	D	12
Transmission	E	14
Front fork—swinging arm type	Fa	16
Front fork—telescopic type	Fb	18
Frame	G	20
Rear suspension and dual seat	H	24
Front wheel—for swinging arm fork	Ia	26
Front wheel—for telescopic fork	Ib	28
Rear wheel	J	30
Handlebars and control cables, early models	Ka	32
Handlebars and control cables, later models	Kb	34
Lighting, speedometer and electric horn	L	36
Tool kit	M	40
Accessories	N	40
Service exchange	O	41
Special workshop tools	P	42
Variation chart	—	44
Numerical index	—	45

INSTRUCTIONS FOR ORDERING

It is essential that the following information is provided with every order for spare parts:—

1. Type and Model of the machine.
2. Frame and Engine numbers.
3. Part number, description, colour and quantity of each spare part required.

Failure to provide this necessary information will inevitably lead to delay in fulfilling the order.

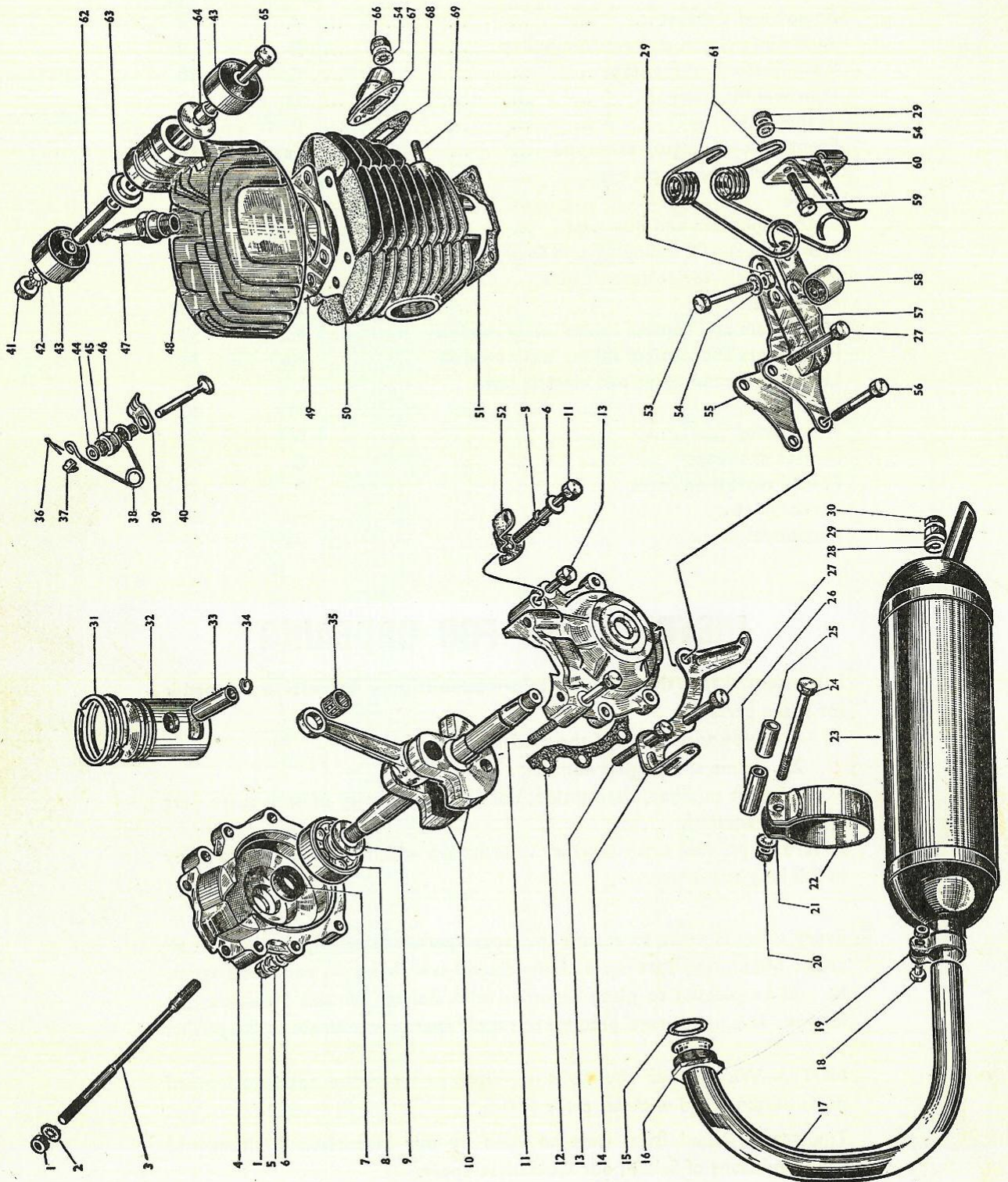
Every effort is made to ensure that spare parts are readily available in all areas. Should any part not be immediately available from your local agent, he will be pleased to place an order with Raleigh Service Headquarters for you. It is not normal practice to supply spare parts direct to the public.

NOTE.—We reserve the right to alter or vary the specifications of parts herein listed without prior notice.

The terms issued from time to time by our Motorised Division and the Conditions of Sale in our Guarantee apply.

ENGINE AND EXHAUST

GROUP 'A'

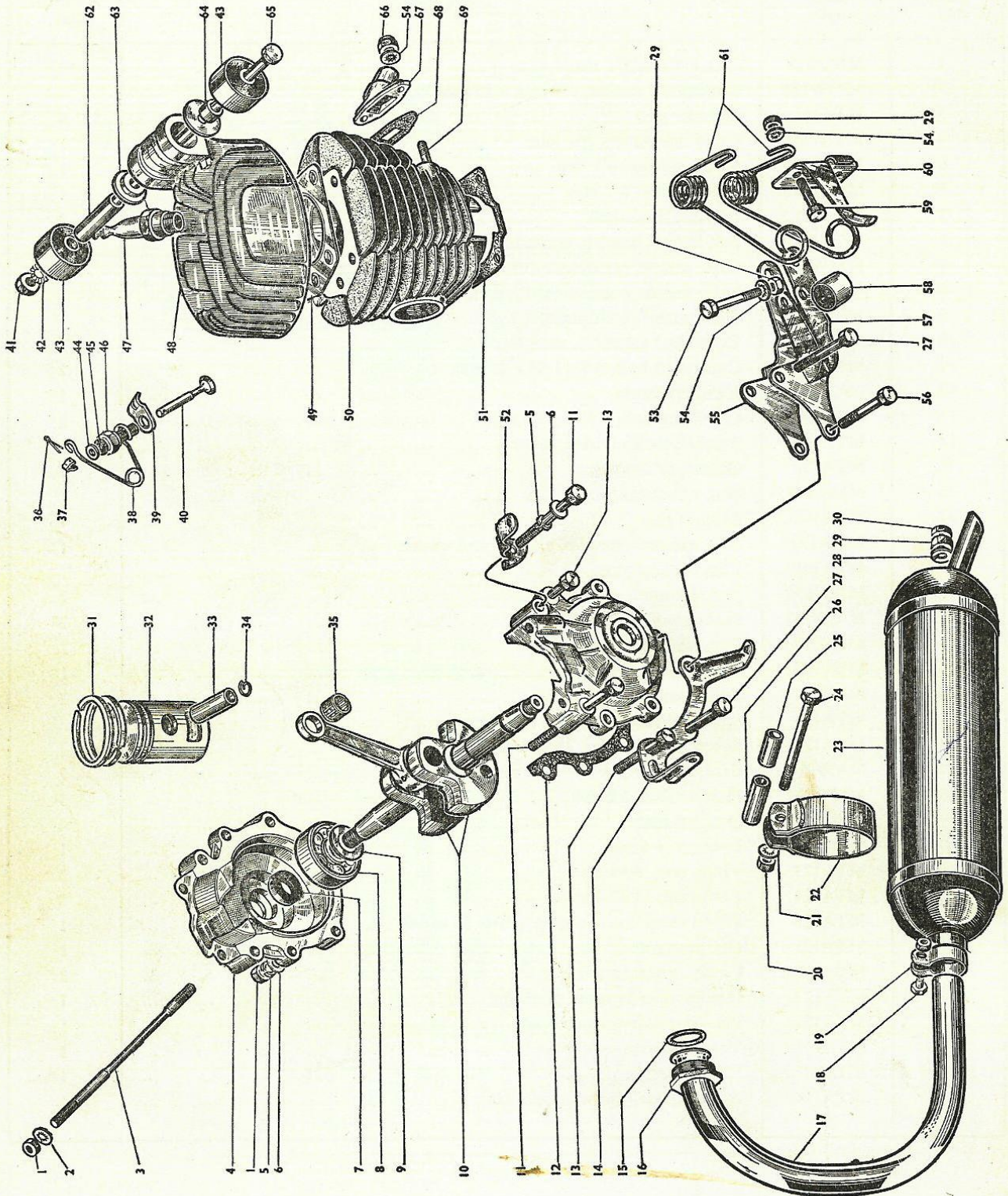


ENGINE AND EXHAUST GROUP 'A'

ILLUS. NO.	SALES NO.	DESCRIPTION	NUMBER OFF
1	MMN148	Nut, ϕ 7 mm. \times 1 mm.	10
2	MMW180	Shakeproof washer, ϕ 7 mm. \times 15 mm. O.D.	4
3	MTA134	Cylinder stud	4
4	MTA135	Crankcase halves, c/w joint	1
5	MMW171	Spring washer, ϕ 7 mm.	1
6	MMW173	Plain washer, ϕ 7 mm.	1
7	MTA131	Oil seal, crankshaft	2
8	MTA132	Ball journal bearing, crankshaft	2
9	MMW168	Shim washer, crankshaft, 0.1 mm.	V
9	MMW169	Shim washer, crankshaft, 0.2 mm.	V
9	MMW170	Shim washer, crankshaft, 0.3 mm.	V
10	MTA311	Crankshaft assembly, complete	1
11	MMB145	Crankshaft bolt, ϕ 7 \times 1.25 \times 45 mm.	2
12	MTA136	Joint, crankcase	1
13	MMB146	Crankcase bolt, ϕ 7 \times 1 \times 30 mm.	2
14	MTA162	Bracket, clutch fairing, lower	1
15	MTA139	Gasket, exhaust pipe	1
16	MMN149	Nut, exhaust pipe	1
17	MTA168	Exhaust pipe	1
18	MMP130	Bolt, exhaust pipe clip, c/w nut and washer	1
19	MTA141	Clip, exhaust pipe	1
20	MMN154	Nut, ϕ 7 mm., silencer clip bolt	2
21	MMW182	Shakeproof washer, ϕ 7 mm.	2
22	MTA171	Clip, silencer mounting	2
23	MTA169	Silencer	1
24	MMB277	Bolt, silencer clip	2
25	MTA173	Spacer, silencer clip, 20.5 mm. long	2
26	MTA172	Spacer, silencer clip, 25.5 mm. long	2
27	MMB151	Crankcase bolt, ϕ 7 \times 1 \times 41 mm.	2
28	MMW167	Plain washer, ϕ 6 mm.	3
29	MMN152	Nut, ϕ 6 mm.	4
30	MMN153	Locknut, ϕ 6 mm.	1
31	MTA123	Piston ring, ϕ 39 mm.	2
or 31	MTA124	Piston ring, ϕ 39.1 mm.	2
*32	MTA122	Piston assembly, complete (Parts 31 to 34)	1
33	MTA125	Gudgeon pin	1
34	MTA126	Circlip, gudgeon pin	2
35	MTA127	Needle roller bearing, small end... ..	1
36	MTA106	Pin, decompressor valve	1
37	MTA105	Yoke, decompressor valve	1
38	MTA107	Hairpin spring	1
39	MTA110	Anchor plate, decompressor cable	1

ENGINE AND EXHAUST

GROUP 'A'



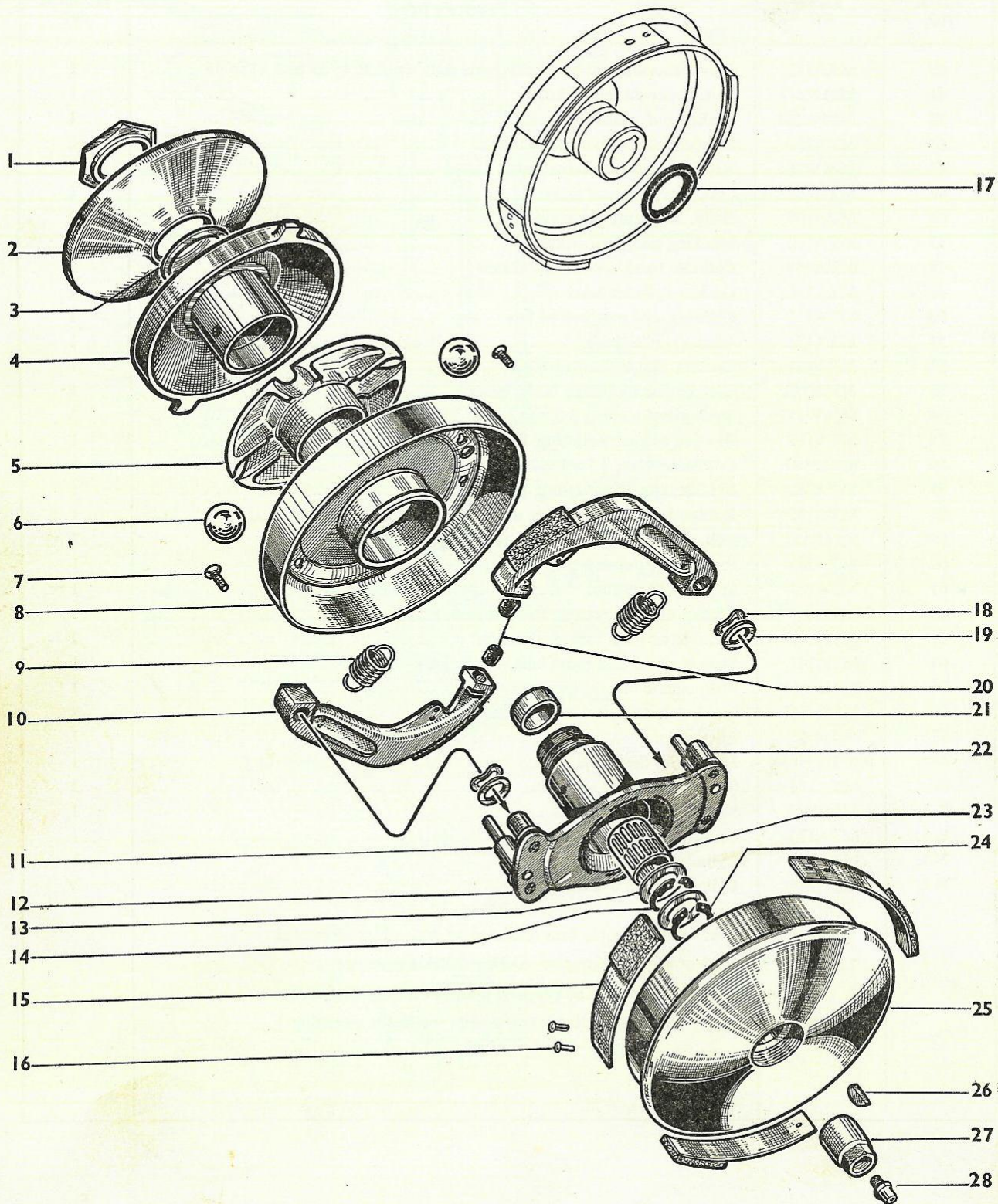
ENGINE AND EXHAUST GROUP 'A'

ILLUS. NO.	SALES NO.	DESCRIPTION	NUMBER OFF
40	MTA112	Decompressor, complete with parts numbered 36 to 39 and 44 to 46 ...	1
41	MMN247	Nut, upper mounting bolt	1
42	MMW164	Shakeproof washer, ϕ 8 mm.	1
43	MTA150	Rubber bush, upper mounting	2
44	MMW165	Retaining washer, valve seal	1
45	MTA108	Seal, decompressor valve	1
46	MTA109	Body, decompressor valve	1
47	MTA152	Sparking plug, c/w washer	1
48	MTA154	Cylinder head, c/w decompressor	1
49	MTA116	Gasket, cylinder head	1
50	MTA155	Cylinder, c/w matched piston	1
51	MTA121	Joint, cylinder base	1
52	MTA161	Bracket, clutch fairing, upper	1
53	MMB152	Bolt, engine mounting bush, lower	1
54	MMW181	Shakeproof washer, ϕ 6 mm.	5
55	MTA163	Bracket, engine mounting, lower R.H.	1
56	MMB147	Crankcase bolt, ϕ 7 \times 1 \times 47 mm.	1
57	MTA283	Bracket, engine mounting, lower L.H.	1
58	MTA165	Rubber bush, engine lower mounting	1
59	MMB153	Bolt, ϕ 6 \times 1 \times 20 mm. spring retaining bracket	2
60	MTA166	Bracket, spring retaining	1
61	MTA167	Spring, belt tension	1 pr.
62	MTA147	Spacer, upper mounting bolt, 41 mm. long	1
63	MTA149	Shouldered plug, upper mounting	2
64	MTA148	Spacer, upper mounting bolt, 4 mm. long	1
65	MMB149	Bolt, engine mounting, upper	1
66	MMN47	Self-locking nut, ϕ 6 mm. \times 1 mm.	2
67	MTA157	Inlet adaptor	1
68	MTA156	Joint, inlet flange	1
69	MTA118	Stud, inlet flange	2
S.A.	MMB155	Set of crankcase bolts	1
S.A.	MTA174	Set of engine joints and gaskets	1
N.I.	MTA145	Cylinder shim, 0.2 mm.	V
N.I.	MTA146	Cylinder shim, 0.4 mm.	V

S.A. = Sub assembly (not illustrated) N.I. = Not illustrated
V = Varies ϕ = Diameter O.D. = Outside diameter
* = Piston can only be supplied if letter on cylinder top face is quoted or cylinder returned to works for matching

AUTOMATIC CLUTCH AND VARIABLE PULLEY

GROUP 'B'



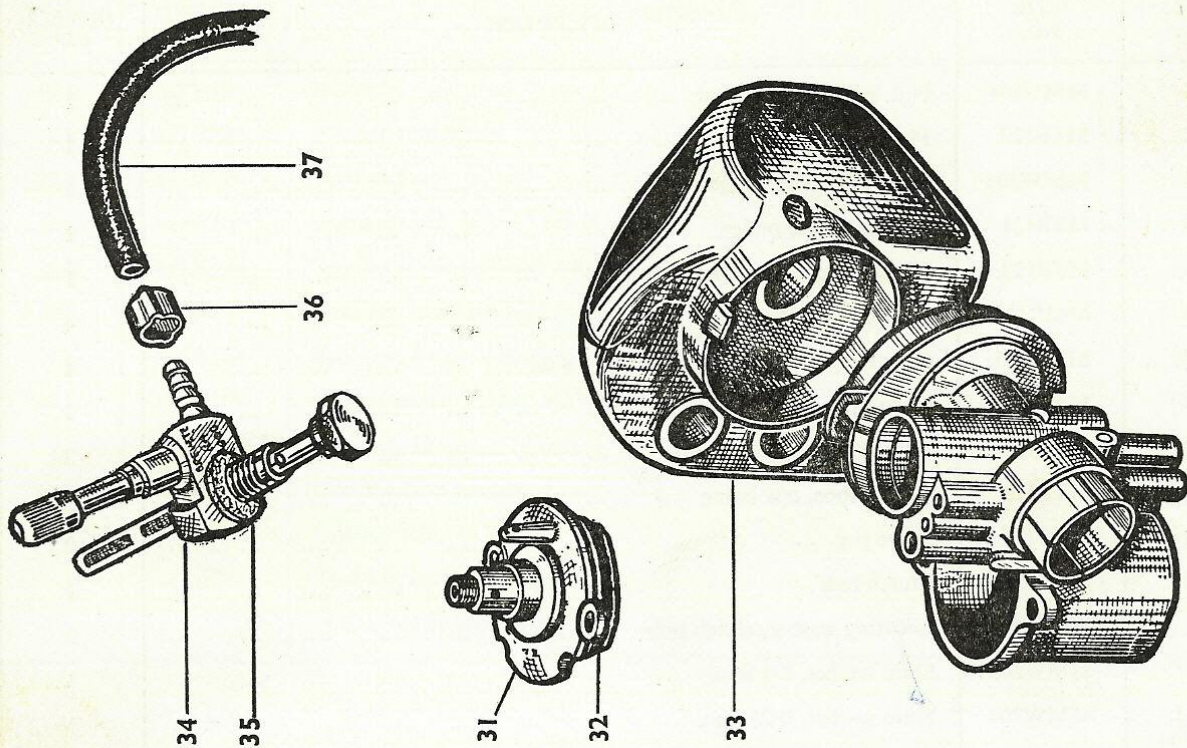
AUTOMATIC CLUTCH AND VARIABLE PULLEY

GROUP 'B'

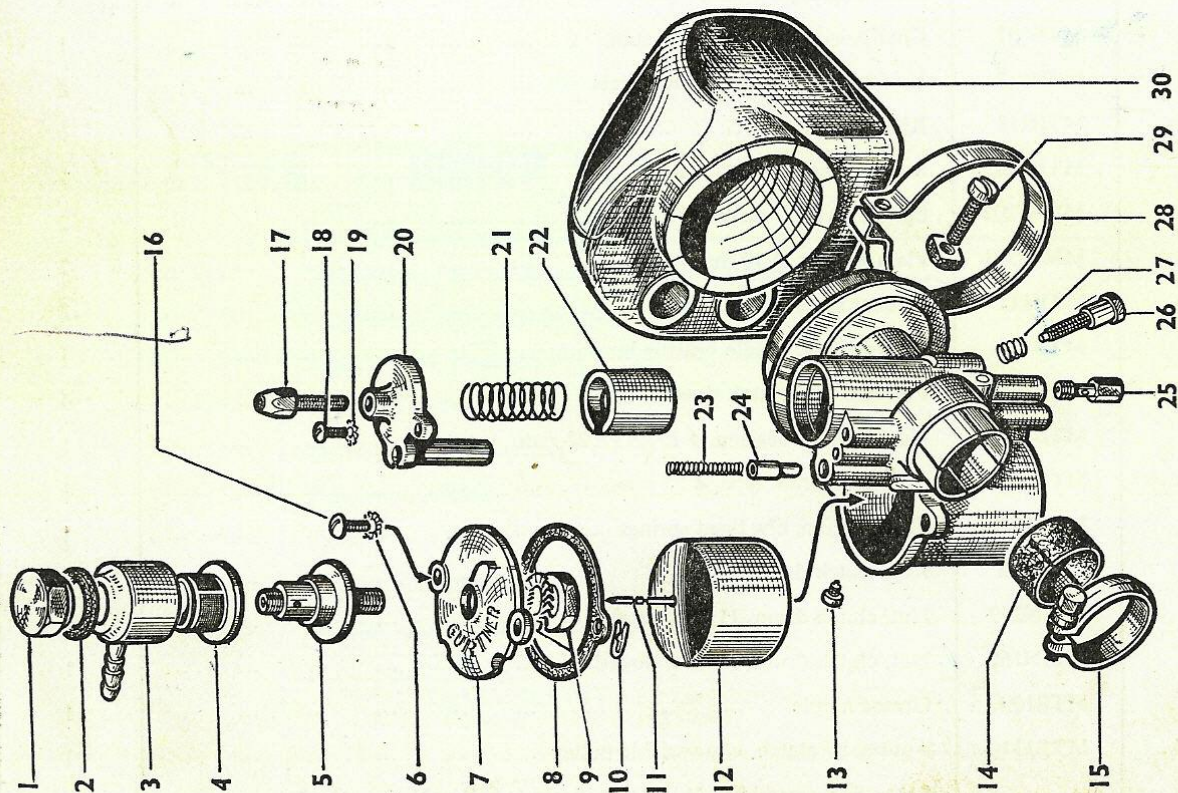
ILLUS. NO.	SALES NO.	DESCRIPTION	NUMBER OFF
1	MMN164	Nut, pulley fixed flange	1
2	MTB120	Fixed flange, pulley	1
3	MMW208	Washer, sliding flange stop	1
4	MTB121	Sliding flange, pulley	1
5	MTB122	Plastic cage, speed change balls	1
6	MML107	Steel ball $\phi \frac{17}{32}$ "	4
7	MMB165	Countersunk screw, $\phi 4 \times 0.75 \times 14$ mm.	4
8	MTB123	Clutch flange	1
9	MTB128	Return spring, clutch shoe	2
10	MTB110	Clutch shoe, c/w lining	2
11	MTB127	Drive peg	2
12	MTB125	Clutch hub	1
13	MMW202	Locating washer, clutch hub	2
N.I.	MMW203	Shim washer, 0.1 mm.	V
N.I.	MMW204	Shim washer, 0.25 mm.	V
N.I.	MMW205	Shim washer, 0.4 mm.	V
14	MTB107	Circlip, external type, $\phi 15$ mm.	1
15	MTB117	Leaf spring, c/w lining and rivets	3
16	MTB118	Rivet	6
17	MTB130	Sealing ring	1
18	MMW207	Spring washer, curved	2
19	MMW361	Plain washer, $\phi 10$ mm.	2
20	MTB112	Rubber stop, clutch shoe	2
21	MTB124	Hollow plug, needle bearing housing	1
22	MTB126	Fulcrum pin, clutch shoe	4
23	MTB106	Needle roller bearing, $\phi 15 \times 19 \times 22$ mm.	1
24	MTB108	Circlip, internal type, $\phi 22$ mm.	1
25	MTB129	Clutch drum, c/w lined springs	1
26	MTB119	Key, clutch drum	1
27	MMN249	Nut, clutch drum, 11 mm. thread	1
or 27	MMN165	Nut, clutch drum, 10 mm. thread	1
28	MTB109	Grease nipple	1
S.A.	MTB131	Automatic clutch, c/w variable pulley	1

S.A. = Sub assembly N.I. = Not illustrated V = Varies ϕ = Diameter

CARBURETTOR AND FUEL TAP GROUP 'C'



LATER MODEL



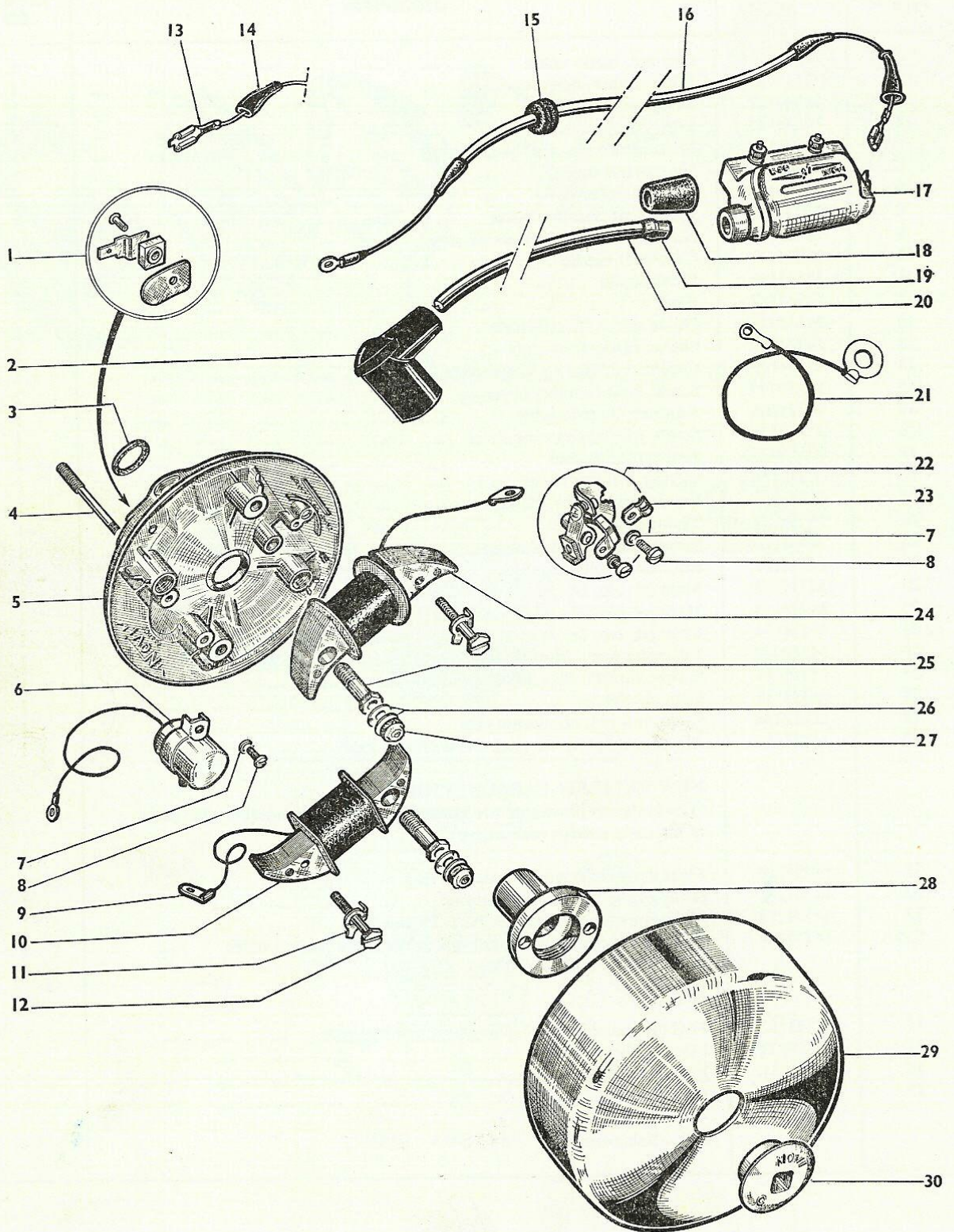
EARLY MODEL

CARBURETTOR AND FUEL TAP GROUP 'C'

ILLUS. NO.	SALES NO.	DESCRIPTION	NUMBER OFF
1	MMN182	Cap nut, banjo union	1
2	MMW251	Fibre washer, banjo union	1
3	MTH141	Banjo union	1
4	MTH142	Filter, banjo union	1
5	MTH144	Float needle seat and banjo fitting	1
6	MMW247	Shakeproof washer	2
7	MTH143	Float chamber cover	1
8	MTH145	Joint, float chamber cover	1
9	MMN183	Nut and washer, float needle seat	1
10	MTH147	Clip, float needle	1
11	MTH146	Float needle	1
12	MTH148	Float	1
13	MMB180	Guide screw, throttle slide	1
14	MTH150	Sleeve, carburettor stub	1
15	MTH149	Clip, carburettor stub, complete... ..	1
16	MMB177	Screw, float chamber cover	2
17	MTH106	Adjuster, throttle cable	1
18	MMB179	Screw, mixing chamber cover	1
19	MMW250	Shakeproof washer	1
20	MTH138	Mixing chamber cover	1
21	MTH140	Return spring, throttle slide	1
22	MTH139	Throttle slide	1
23	MTH110	Spring, enrichment plunger	1
24	MTH111	Enrichment plunger	1
25	MTH152	Main jet, No. 24	1
or 25	MTH153	Main jet, No. 25	1
or 25	MTH154	Main jet, No. 26	1
26	MMB182	Adjusting screw, throttle slide	1
27	MTH151	Spring, throttle slide adjusting screw	1
28	MTH137	Clip, air cleaner	1
29	MMP144	Screw and nut, air cleaner clip	1
30	MTH156	Air cleaner, complete (incl. Parts 28 and 29)	1
NEW PATTERN CARBURETTOR			
(The parts not illustrated are identical to or interchangeable with those of the early pattern carburettor)			
31	MTH210	Float chamber cover, c/w sealing ring	1
32	MTH211	Sealing ring, float chamber cover	1
33	MTH213	Air cleaner, complete (incl. Parts 28 and 29)	1
S.A.	MTH214	Carburettor complete less control cables (New pattern only)	1
FUEL TAP			
34	MTH132	Fuel tap, complete with fixing bolt and fuel pipe	1
35	MMW249	Fibre washer, fuel tap	2
36	MTH131	Fixing collar, fuel pipe	1
37	MTH130	Fuel pipe	1
S.A. = Sub assembly			

FLYWHEEL MAGNETO

GROUP 'D'



FLYWHEEL MAGNETO

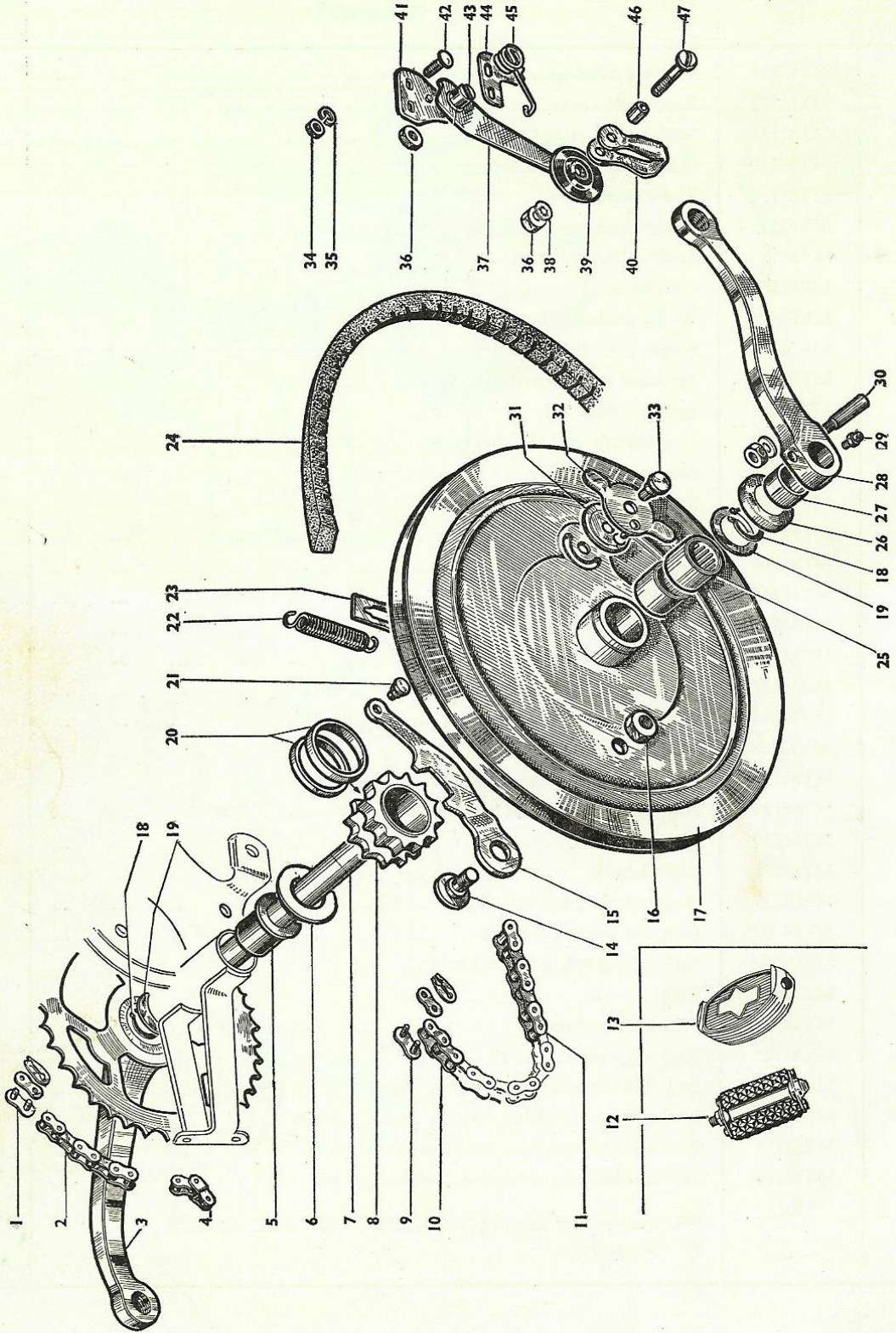
GROUP 'D'

ILLUS. NO.	SALES NO.	DESCRIPTION	NUMBER OFF
1	MTM138	Lighting terminal, complete	1
2	MTM153	Suppressor cover, sparking plug... ..	1
3	MTM137	Sealing ring, stator plate	1
4	MTM129	Stud, stator plate securing	2
5	MTM157	Stator plate, bare	1
S.A.	MTM158	Stator plate, complete	1
*S.A.	MTM167	Stator plate, complete	1
6	MTM134	Condenser	1
7	MMW308	Spring washer, ϕ 4 mm.	4
8	MMB238	Screw, ϕ 4×0.75×10 mm.	4
9	MTM132	Terminal tag, internal coils	2
10	MTM131	Ignition coil, L.T.	1
11	MTM133	Locking tab, coil securing screw	2
12	MMB236	Screw, coil securing	2
13	MTP161	Spade terminal	2
14	MTP162	Plastic cover, spade terminal	2
15	MTM144	Grommet, L.T. wire	1
16	MTM143	Ignition L.T. lead, complete	1
17	MTM145	H.T. ignition coil, external	1
18	MTM146	Cap, H.T. lead to coil	1
19	MTM147	Terminal, H.T. lead	1
20	MTM148	H.T. lead, c/w terminal	1
21	MTM154	Earth wire, complete	1
22	MTM136	Contact breaker, complete	1
23	MTM135	Adjusting clip, contact breaker	1
24	MTM130	Lighting coil	1
*24	MTM166	Lighting coil	1
25	MMB237	Hollow screw, coil securing	2
26	MMW307	Belleville washer, ϕ 5 mm.	4
27	MMN226	Self-locking nut, ϕ 5×0.75 mm.... ..	2
28	MTM139	Cam	1
29	MTM159	Magneto flywheel	1
*29	MTM165	Magneto flywheel	1
30	MMN227	Nut, flywheel retaining, 11 mm. thread... ..	1
or 30	MMN228	Nut, flywheel retaining, 10 mm. thread	1
S.A.	MTM151	Flywheel magneto complete, less external coil	1
*S.A.	MTM164	Flywheel magneto complete, less external coil	1

*=Fitted to engines after No. R.109000 S.A.=Sub assembly
 ϕ =Diameter

TRANSMISSION

GROUP 'E'



TRANSMISSION

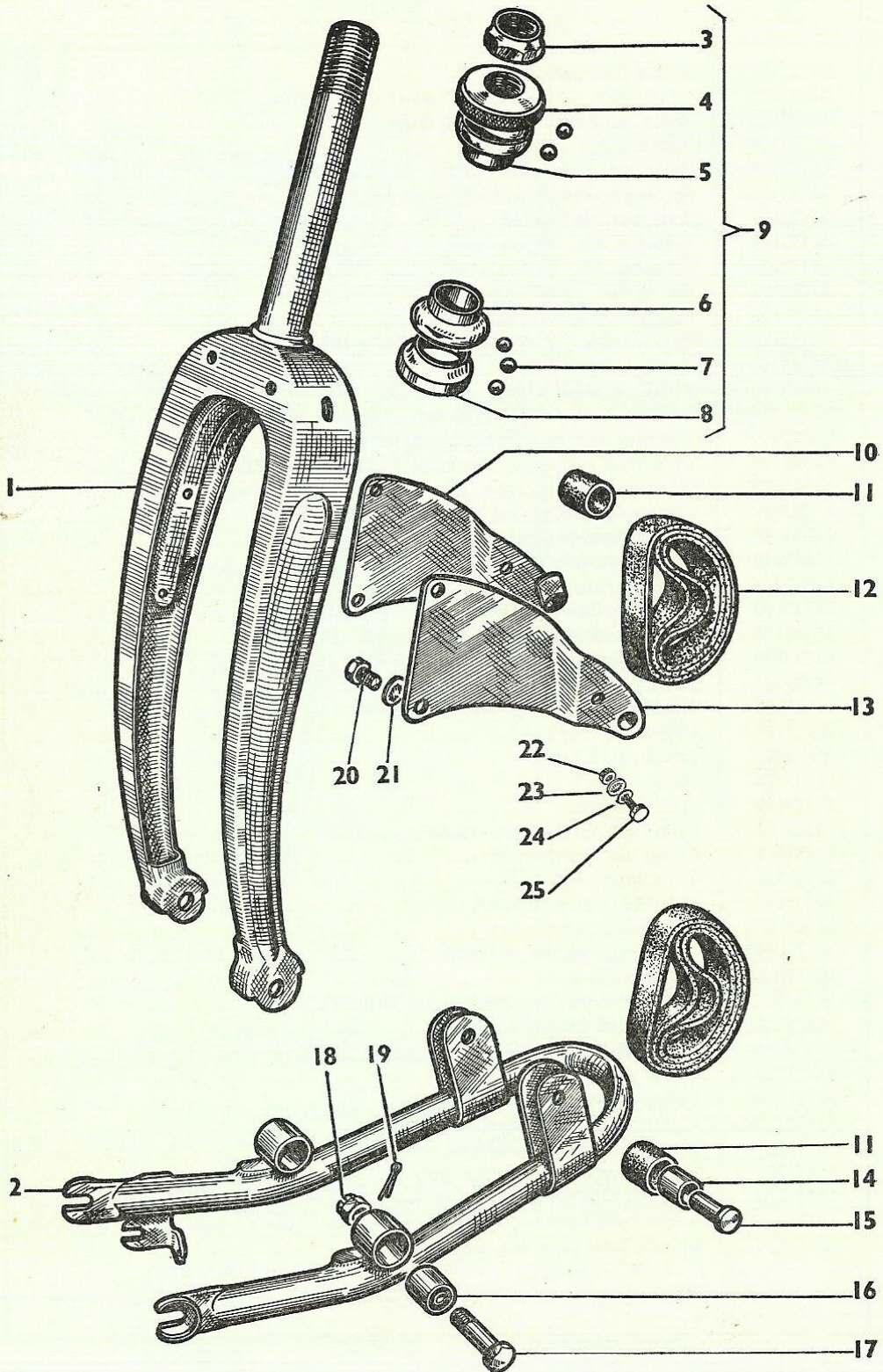
GROUP 'E'

ILLUS. NO.	SALES NO.	DESCRIPTION	NUMBER OFF
1	MTD198	Spring link, pedal chain	1
2	MTD223	Pedal chain, $\frac{1}{2} \times \frac{3}{8} \times 0.305$ " roller $\times 100$ pitches	1
3	MTD175	Pedal crank and chainwheel, R.H.	1
4	MTD199	Cranked link, pedal chain	1
5	MTD211	Bush, bottom bracket	2
6	MMW236	Spacing washer, $\phi 16.5 \times 37 \times 0.8$ mm.	1
7	MTD213	Axle, bottom bracket	1
8	MTD183	Sprocket, 12t. 29 mm. bore	1
or 8	MTD254	Sprocket, 12t. 26 mm. bore	1
9	MTD195	Spring link, drive chain	1
10	MTD196	Cranked link, drive chain	1
11	MTD222	Drive chain, $\frac{1}{2} \times \frac{3}{16} \times 0.305$ " roller $\times 103$ pitches	1
12	MTD244	Pedals, 4" plain	1 pr.
or 13	MTD210	Pedals, 4" solid rubber	1 pr.
14	MMP157	Fulcrum bolt, complete (10 mm. shoulder)	1
or 14	MMP135	Fulcrum bolt, complete (12 mm. shoulder)	1
15	MTD243	Lock lever and spring assembly (Parts 14 to 16 and 21 to 23)	1
16	MMN170	Nut, lock lever fulcrum	1
17	MTD217	Bottom bracket pulley, complete	1
18	MTD181	Circlip, bottom bracket axle	2
19	MMW231	Spacing washer, $\phi 16.5 \times 27 \times 1$ mm.	2
20	MTD215	Resilient rings	1 set.
21	MTD190	Rivet pin, lock lever spring	1
22	MTD188	Spring, lock lever	1
23	MTD189	Guide plate, lock lever spring	1
24	MTD221	Drive belt	1
25	MTD184	Needle roller bearing, bottom bracket	2
26	MTD185	End cap, pulley hub	1
27	MTD216	Spacer, L.H. crank	1
28	MTD174	Pedal crank, L.H.	1
29	MTD179	Grease nipple	1
30	MTD177	Cotter pin, c/w nut and washer	2
31	MTD191	Spring disc, turnbutton	1
32	MTD220	Turnbutton, lock lever	1
33	MTD192	Fulcrum rivet, turnbutton	1
34	MMN171	Nut, fixing screw	2
35	MMW233	Shakeproof washer, $\phi 5$ mm.	2
36	MMN152	Nut, spindle screw	1
37	MTD229	Chain tensioner, complete (Parts 34 to 47)	1
38	MMW234	Shakeproof washer, $\phi 6$ mm.	1
39	MTD201	Wheel, chain tensioner	1
40	MTD228	Chain guide	1
41	MTD224	Fixing plate, chain tensioner	1
42	MMP133	Fixing screw, c/w nut, chain tensioner	2
43	MTD226	Pivot pin, c/w nut, tensioner arm	1
44	MTD225	Spring stop plate, tensioner arm	1
45	MTD238	Spring, chain tensioner	1
46	MTD203	Bush, chain tensioner spindle	1
47	MMP134	Spindle screw, c/w nut, chain tensioner	1

ϕ = Diameter

FRONT FORK—SWINGING ARM TYPE

GROUP 'F' (a)



FRONT FORK—SWINGING ARM TYPE

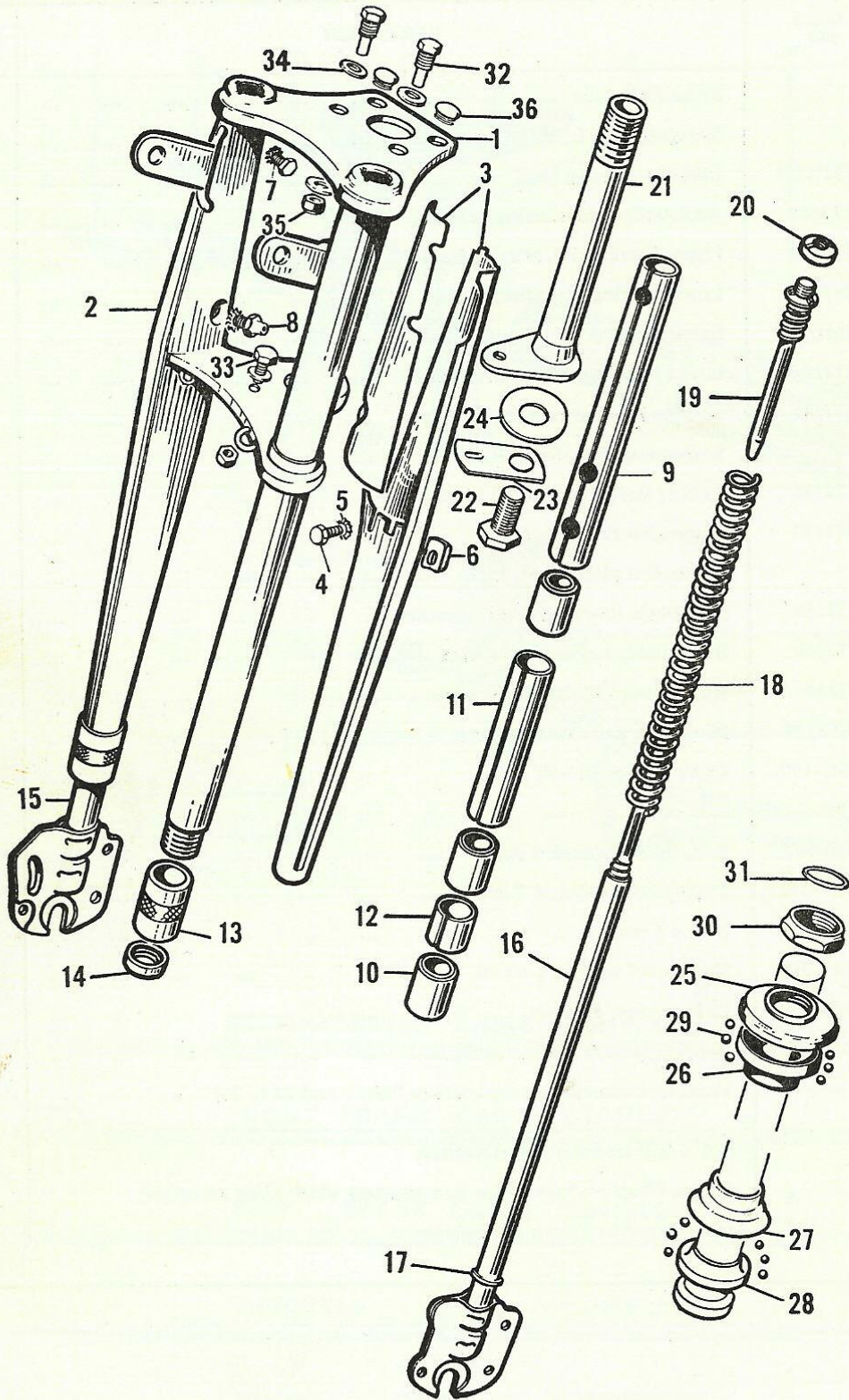
GROUP 'F' (a)

ILLUS. NO.	SALES NO.	DESCRIPTION	NUMBER OFF
1	*	Front fork, bare	1
2	*	Swinging arm, front	1
3	MMN191	Locknut, steering head	1
4	MTJ145	Adjustable cone, steering head	1
5	MTJ118	Upper bearing cup, steering head	1
6	MTJ119	Lower bearing cup, steering head	1
7	MML101	Ball bearing, $\phi \frac{5}{32}$ "	50
8	MTJ144	Lower bearing cone, steering head	1
9	MTJ146	Steering head bearing set, complete	1
10	*	Suspension plate, front, R.H.	1
11	MTJ138	Rubber sleeve, suspension bracket	4
12	MTJ137	Suspension rubber	6
13	*	Suspension plate, front, L.H.	1
14	MTJ139	Steel bush, lower suspension bracket	2
15	MTJ140	Rivet, lower suspension bracket	2
16	MTJ141	Rubber pivot bush, swinging arm	2
17	MMB199	Pivot bolt, front swinging arm	2
18	MMN190	Castle nut, pivot bolt	2
19	MTJ142	Split pin	2
20	MMB197	Bolt, front suspension plate	4
21	MMW182	Shakeproof washer, ϕ 7 mm.	4
22	MMN152	Nut, ϕ 6 mm.	2
23	MMW266	Shakeproof washer, ϕ 6 mm.	2
24	MMW239	Plain washer, ϕ 6 mm.	2
25	MMB198	Bolt, suspension plate to mudguard	2
S.A.	*	Front fork assembly, complete (less Parts 9 and 22 to 25)	1

S.A.—Sub assembly ϕ =Diameter
 *—See Chart on Page 44 for part numbers which differ according to make and/or colour of machine

FRONT FORK—TELESCOPIC TYPE

GROUP 'F' (b)



FRONT FORK—TELESCOPIC TYPE

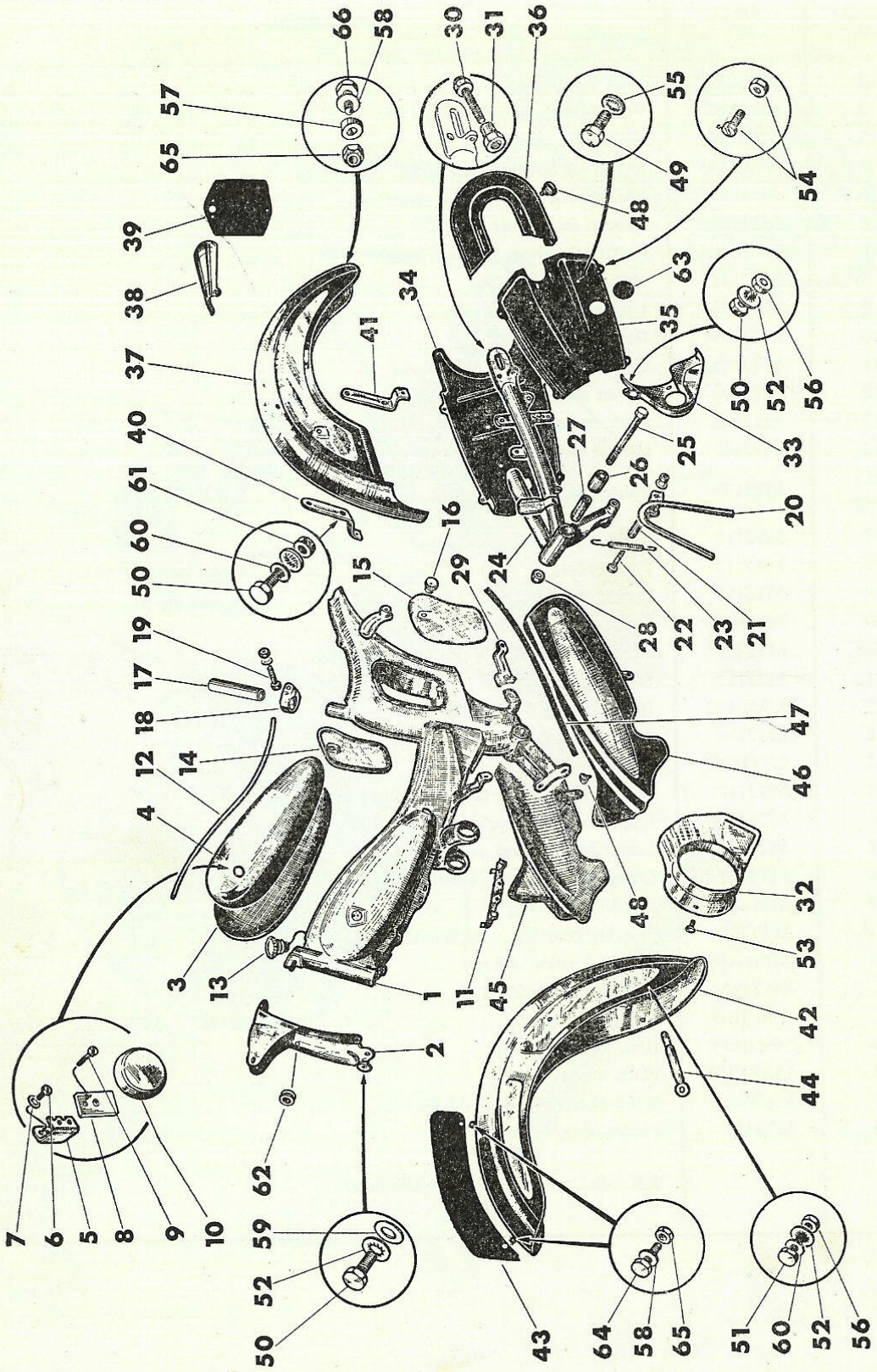
GROUP 'F' (b)

ILLUS. NO.	SALES NO.	DESCRIPTION	NUMBER OFF
1	MTJ207	Fork tube, with covers	1
2	MTJ209	Fork tube cover, R.H.	1
3	MTJ208	Fork tube cover, L.H.	1
4	MMB195	Bolt, fork cover, 9 mm. long	2
5	MMW157	Shakeproof washer, fork cover	6
6	MTJ127	Spacer, fork cover... ..	2
7	MMB196	Bolt, fork cover, 5.5 mm. long	2
8	MTJ128	Grease nipple	2
9	MTJ103	Upper spacer, fork tube	2
10	MTJ104	Bush, fork tube	6
11	MTJ105	Centre spacer, fork tube	2
12	MTJ106	Lower spacer, fork tube	2
13	MTJ196	Fork end cap, c/w seal	2
14	MTJ108	Grease seal	2
15 } 16 }	MTJ177	Telescopic legs, front fork	1 pr.
17	MTJ111	Stop ring	2
18	MTJ112	Fork spring	2
19	MTJ113	Spring retaining rod	2
20	MMN187	Slotted nut, spring retaining rod	2
S.A.	MTJ206	Front fork, complete (Parts 1 to 20)	1
21	MTJ115	Steering stem	1
22	MMB192	Bolt, steering stem	1
23	MTJ116	Locking plate, stem bolt	1
24	MMW265	Clamp washer	1
25	MTJ117	Adjustable bearing cone, steering head	1
26	MTJ118	Upper bearing cup, steering head	1
27	MTJ119	Lower bearing cup, steering head	1
28	MTJ120	Lower bearing cone, steering head	1
29	MML101	Ball bearing, $\phi \frac{5}{16}$ "	50
S.A.	MTJ121	Steering bearings, complete (Parts 25 to 30)	1
30	MMN188	Locknut, steering head	1
31	MTJ122	Sealing ring, locknut	1
32	MMB193	Bolt, steering stop	2
33	MMB194	Bolt, locking plate	2
34	MMW101	Plain washer, $\phi \frac{1}{4}$ "... ..	5
35	MMN189	Self locking nut, $\phi \frac{1}{4}$ " B.S.F.	3
36	MTJ123	Plastic plug, white... ..	2

S.A. = Sub assembly ϕ = Diameter

FRAME

GROUP 'G'

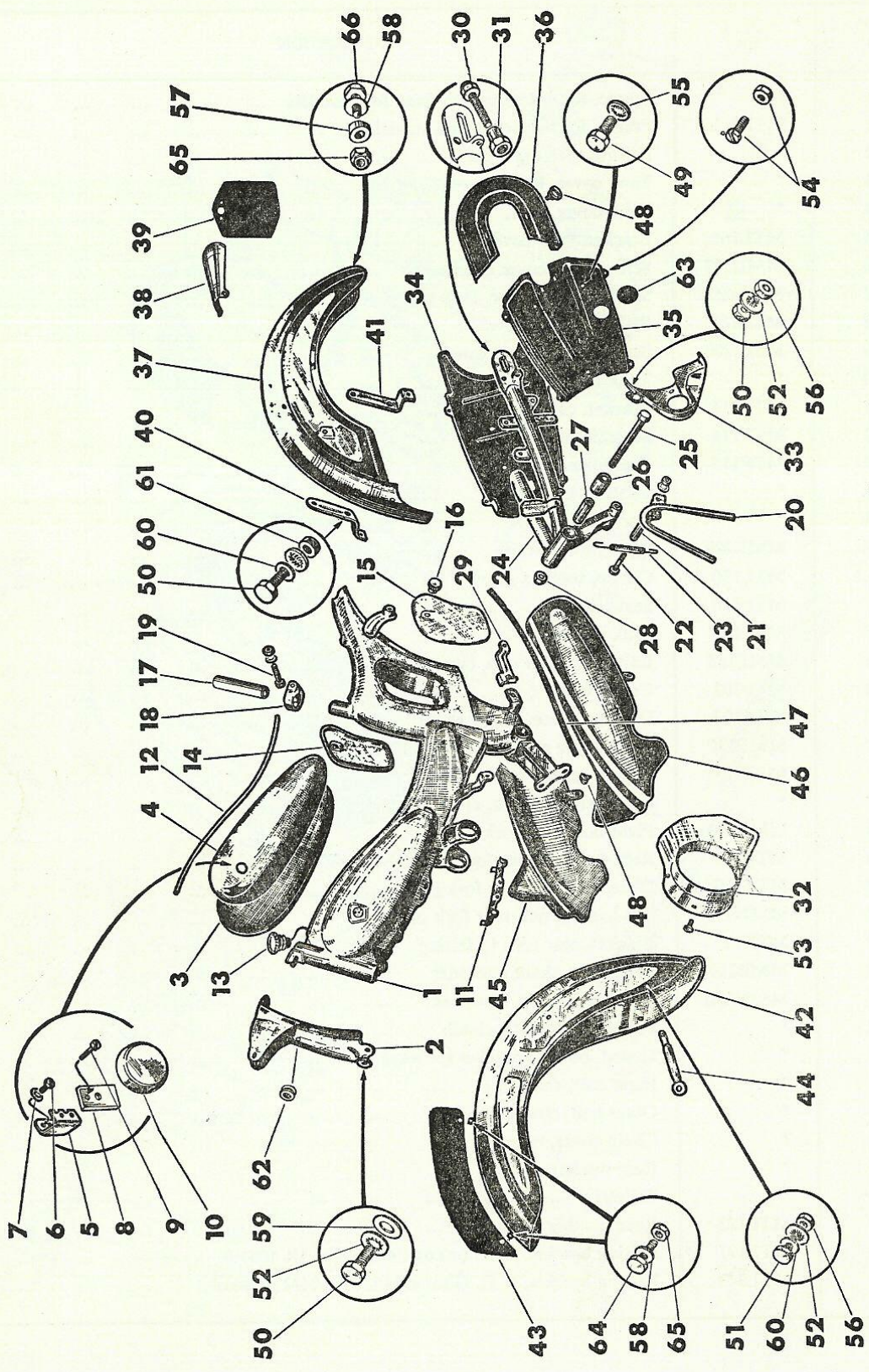


FRAME GROUP 'G'

ILLUS. NO.	SALES NO.	DESCRIPTION	NUMBER OFF
1	*	Frame, for swinging arm front fork models	1
or 1	MTF193	Frame, for telescopic fork models	1
2	*	Fairing, steering head	1
3	*	Tank cover, R.H.	1
4	*	Tank cover, L.H.	1
5	MTL165	Bracket, tank cover	2
6	MMB207	Screw, tank cover bracket	4
7	MMW294	Shakeproof washer, tank cover	4
8	MTL166	Plate, tank cover	2
9	MMB208	Screw, tank cover plate	4
10	*	Tank badge	2
11	MTF111	Bracket, cable retaining	1
12	MTF114	Metallic trim strip... ..	1
13	MTF115	Fuel filler cap	1
14	*	Toolbox lid, R.H.	1
15	*	Toolbox lid, L.H.	1
16	MMB209	Screw, toolbox lid	2
N.I.	MTL170	Circlip, toolbox screw	2
17	MTF116	Seat pillar	1
18	MTF117	Clip, seat pillar	1
19	MMP138	Bolt, seat pillar clip, complete	1
20	MTF102	Centre stand	1
21	MTF103	Distance piece, centre stand	1
22	MMP136	Bolt, centre stand, c/w nut and washer	1
23	MTF123	Return spring, centre stand	1
24	*	Rear swinging fork, c/w inner chaincase	1
25	MMB172	Pivot bolt, rear fork	1
26	MTF119	Rubber bush, rear fork pivot	2
27	MTF120	Distance piece, rear fork pivot	1
28	MMN173	Self-locking nut, rear fork pivot	1
29	MTF121	Bracket, rear fork to fairing	1
30	MMB210	Bolt, drive chain tensioner	2
31	MMN220	Nut, drive chain tensioner	2
32	*	Fairing, automatic clutch	1
33	*	Guard, bottom bracket sprocket	1
34	*	Inner half, chaincase	1
35	*	Outer half, chaincase	1
36	*	Chain cover, rear	1
37	*	Rear mudguard	1
38	*	Tailpiece	1
39	MTL123	Rear number plate	1
40	MTL177	Fairing bracket, R.H. (up to Frame No. 5R 10410)	1
or 40	MTL349	Fairing bracket, R.H. (Frame No. 5R 10411 onwards)	1

FRAME

GROUP 'G'



FRAME

GROUP 'G'

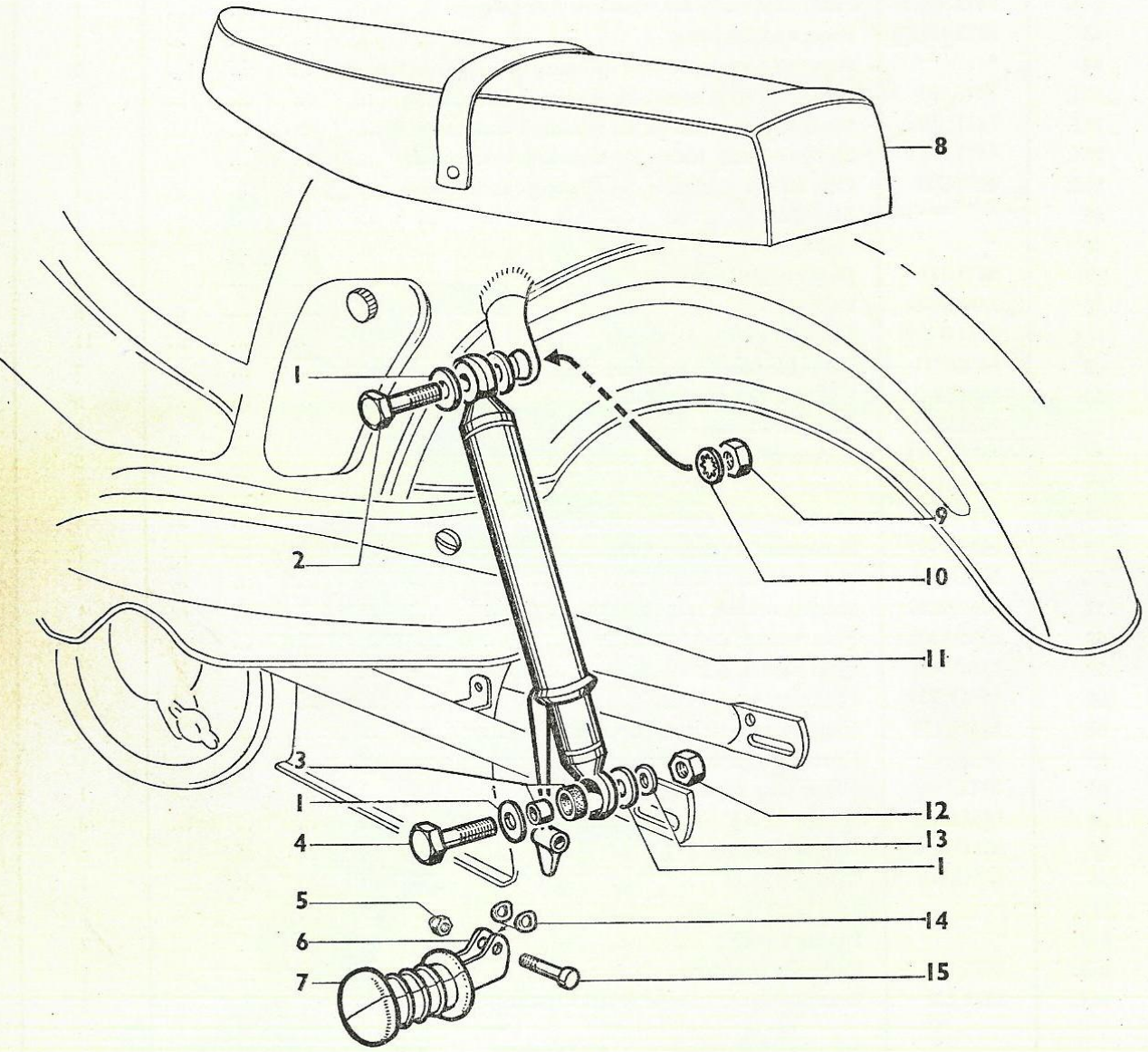
ILLUS. NO.	SALES NO.	DESCRIPTION	NUMBER OFF
41	MTL178	Fairing bracket, L.H. (up to Frame No. 5R 10410)	1
or 41	MTL347	Fairing bracket, L.H. (Frame No. 5R 10411 onwards)	1
42	*	Front mudguard, for swinging arm front fork models	1
N.I.	MTL382	Front mudguard, for telescopic fork models	1
43	MTL128	Front number plate	1
44	*	Stay, front mudguard, for swinging arm front fork models	2
N.I.	MTL383	Mudguard stay, upper, for telescopic fork models	1
N.I.	MTL384	Mudguard stay, centre, for telescopic fork models	1
N.I.	MTL385	Mudguard stay, lower, for telescopic fork models	1
N.I.	MTN251	Clip, front brake cable, for telescopic fork models	1
45	*	Fairing, R.H.	1
46	*	Fairing, L.H.	1
47	MTL111	Plastic edging strip	2
48	MMB278	Fairing screw	8
N.I.	MMW289	Plastic washer, ϕ 5 mm.	11
49	MMB211	Bolt, chaincase, ϕ 5 \times 8 mm.	7
50	MMB212	Bolt, ϕ 6 \times 12 mm.	6
51	MMB213	Bolt, ϕ 6 \times 8 mm.	2
52	MMW181	Shakeproof washer, ϕ 6 mm.	8
53	MMB281	Screw, ϕ 5 \times 7 mm.	3
54	MMP150	Screw and nut, chaincase flange	4
55	MMW237	Shakeproof washer, ϕ 5 mm.	7
56	MMN221	Nut, ϕ 6 mm. 9 mm. A.F.	4
57	MMW293	Spacing washer, rear No. plate	1
58	MMW105	Plain washer, ϕ $\frac{3}{16}$ "	9
59	MMW288	Plain washer, ϕ $\frac{1}{4}$ "	2
60	MMW239	Plain washer, ϕ 6 mm.	6
61	MMN152	Nut, ϕ 6 mm. 10 mm. A.F.	4
62	MTL183	Grommet, lighting harness	1
63	MTL184	Plastic plug, chaincase	1
64	MMB206	Bolt, ϕ $\frac{3}{16}$ " \times $\frac{1}{2}$ "	4
65	MMN217	Nut, self-locking, ϕ $\frac{3}{16}$ "	5
66	MMB140	Bolt, ϕ $\frac{3}{16}$ " \times $\frac{3}{4}$ "	1
N.I.	*	Trademark transfer	2
N.I.	*	Fairing transfer	2
N.I.	MTL144	Fuel ratio transfer... ..	1
N.I.	MTL142	Rear mudguard transfer (PHILLIPS only)	2

N.I. = Not illustrated ϕ = Diameter A.F. = Across flats

* = See chart on Page 44 for the part numbers which differ according to the make and/or colour of machine

REAR SUSPENSION AND DUAL SEAT

GROUP 'H'



REAR SUSPENSION AND DUAL SEAT

GROUP 'H'

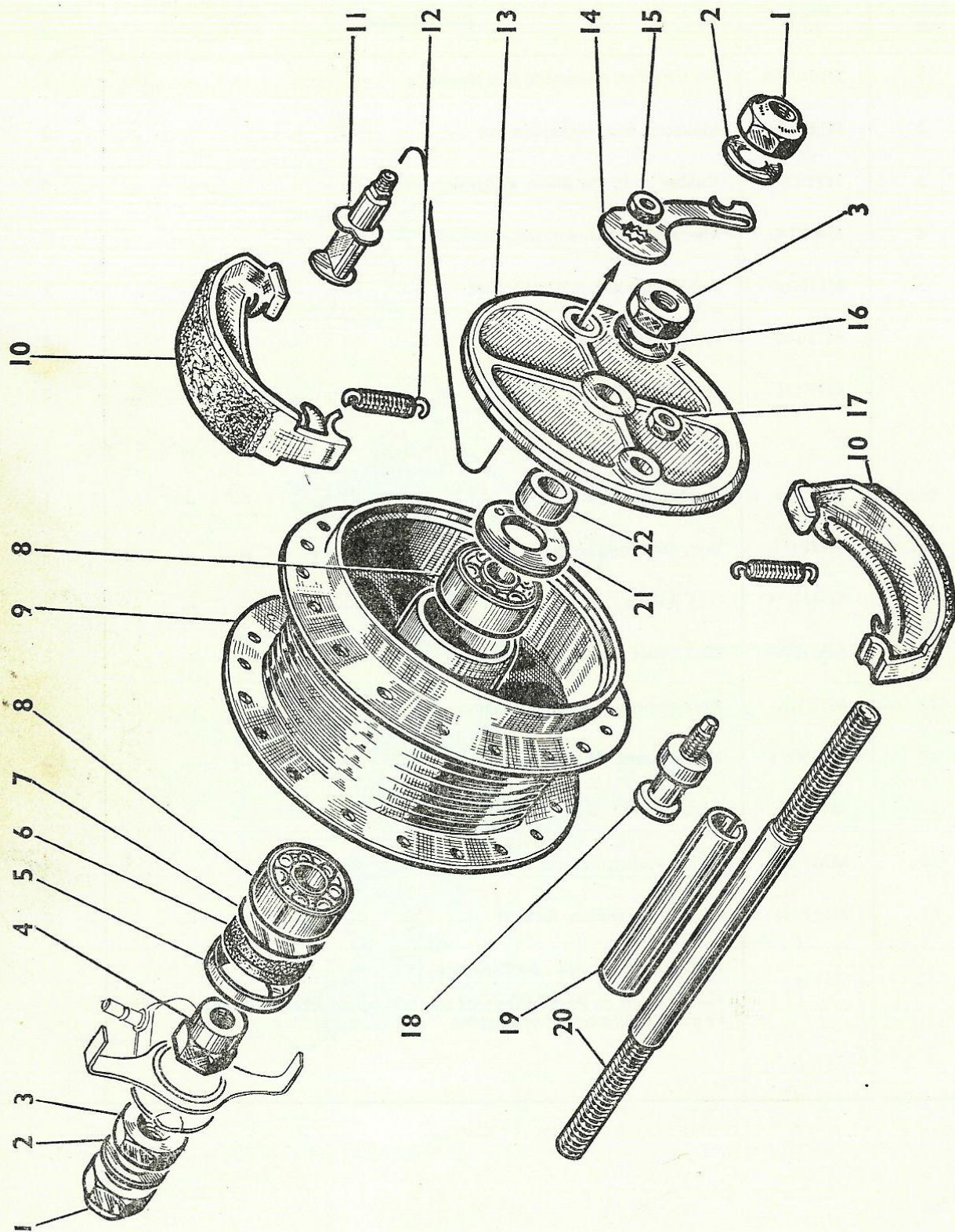
ILLUS. NO.	SALES NO.	DESCRIPTION	NUMBER OFF
1	MMW238	Plain washer, suspension unit mounting	8
2	MMP139	Mounting bolt, upper, c/w nut	2
3	MTF127	Rubber bush, c/w sleeve, suspension unit	4
4	MMP140	Mounting bolt, lower, c/w nut	2
5	MMN147	Self-locking nut, pillion footrest	2
6	MTF130	Pillion footrest, bare	2
7	MTF131	Footrest rubber	2
8	*	Dual seat, complete	1
N.I.	MTL199	Bracket, dual seat	1
N.I.	MMP151	Bolt, dual seat fixing, c/w nut and washer	2
9	MMN174	Nut, ϕ 8 mm. \times 8 mm. thick	2
10	MMW164	Shakeproof washer, ϕ 8 mm.	2
11	MTF126	Rear suspension unit, complete	2
12	MMN175	Nut, ϕ 8 mm. \times 6 mm. thick	2
13	MTF129	Distance piece, 5 mm. thick	2
14	MMW364	Spring washer, footrest bolt	4
15	MMP141	Pivot bolt complete, footrest	2

N.I.=Not illustrated ϕ =Diameter

*=See Chart on Page 44 for part numbers which differ according to make and/or colour of machine

FRONT WHEEL—FOR SWINGING ARM FORK

GROUP 'I'(a)



FRONT WHEEL—FOR SWINGING ARM FORK

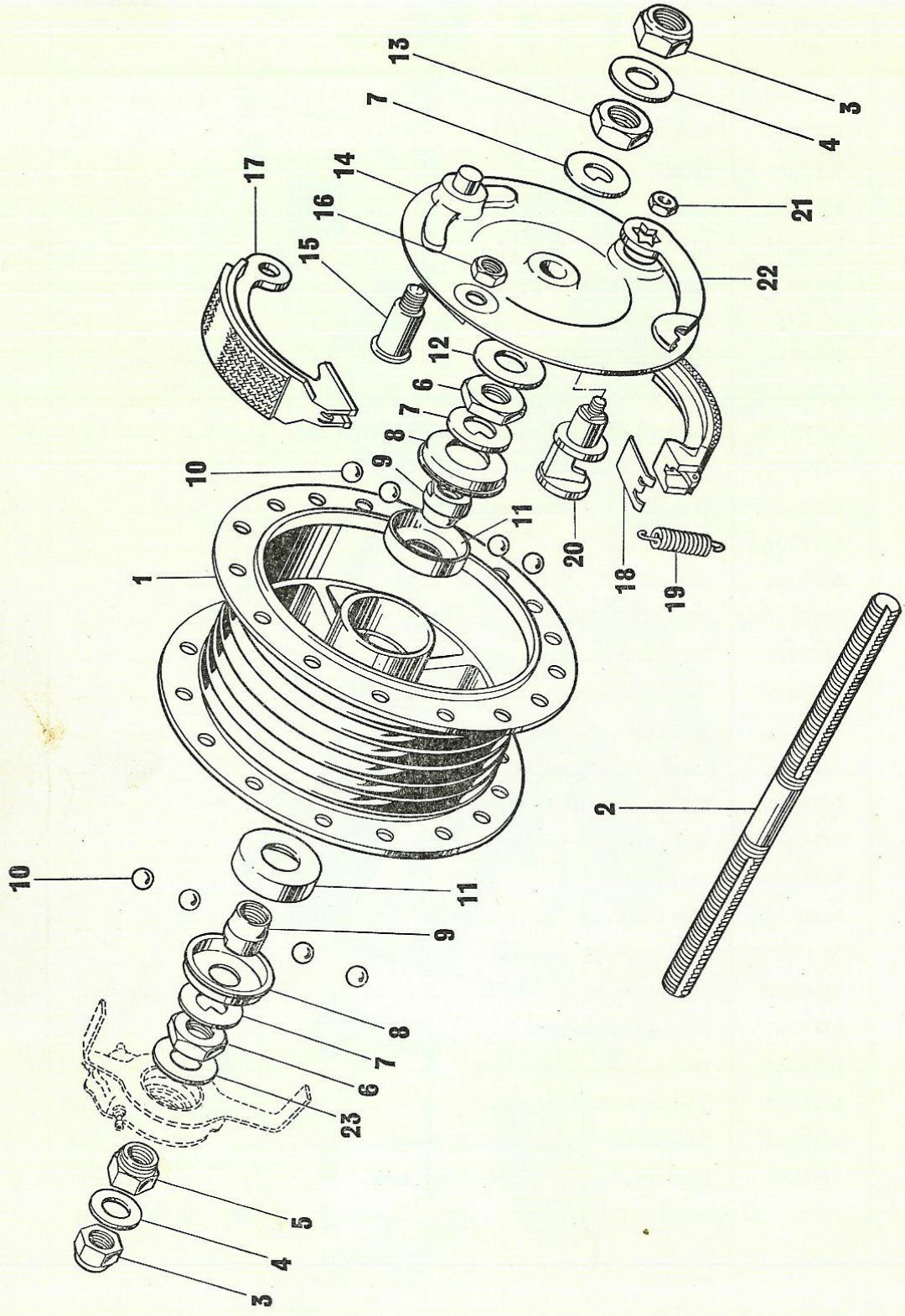
GROUP 'I'(a)

ILLUS. NO.	SALES NO.	DESCRIPTION	NUMBER OFF
N.I.	MTK149	Front wheel, complete	1
N.I.	MTK150	Rim, 22½" × 2¼"	1
N.I.	MTK151	Spoke	36
N.I.	MTK152	Nipple	36
N.I.	MTK153	Tyre, 22½" × 2¼"	1
N.I.	MTK154	Inner tube, 22½" × 2¼"	1
N.I.	MTK155	Rim tape	1
1	MMN196	Nut, wheel spindle	2
2	MMW272	Plain washer, wheel spindle	2
3	MMN199	Locknut, brake plate and speedometer drive unit	2
N.I.	MTK122	Washer, speedometer drive unit	1
4	MMN197	Shouldered nut, wheel spindle	1
5	MTK159	Cap, felt seal	1
6	MTK160	Felt seal	1
7	MMW278	Plain washer, felt seal	1
8	MTK161	Ball journal bearing	2
9	MTK156	Front hub, complete (Parts 1 to 22)	1
10	MTK144	Brake shoe, c/w lining	1 pr.
11	MTK168	Brake cam, c/w nut	1
12	MTK145	Return spring, brake shoe	2
13	MTK165	Brake plate, c/w lined shoes	1
14	MTK169	Lever, brake cam	1
15	MMN200	Nut, brake cam	1
16	MMW277	Plain washer, brake plate	1
17	MMN206	Nut, pivot pin	1
18	MTK167	Pivot pin, brake shoe	1
19	MTK162	Distance tube, 43 mm. long	1
20	MTK158	Wheel spindle, front	1
21	MTK163	Screwed bearing retainer, L.H. thread	1
22	MTK164	Distance piece, brake plate, 6 mm. long	1

N.I. = Not illustrated

FRONT WHEEL—FOR TELESCOPIC FORK

GROUP '1' (b)



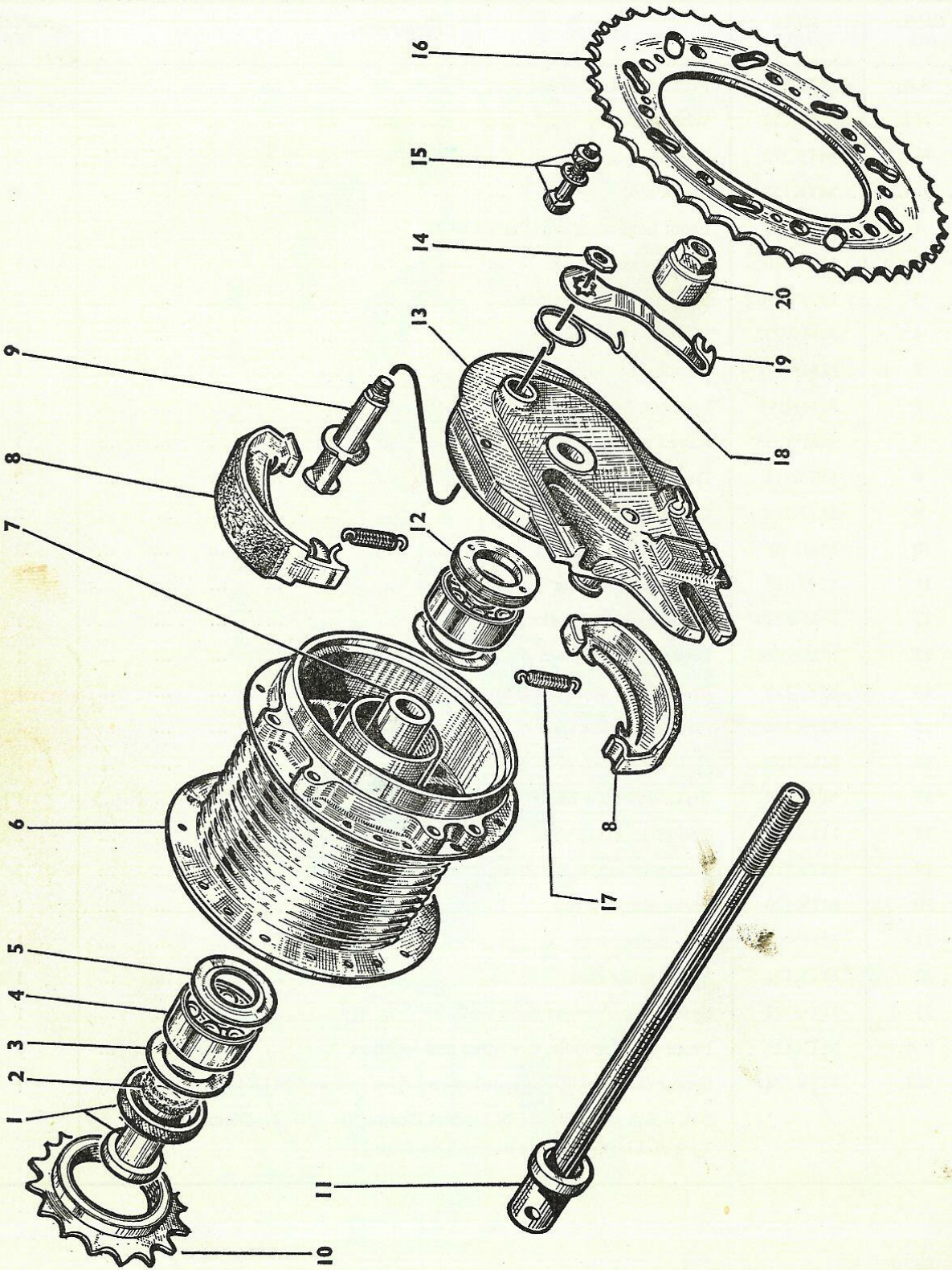
FRONT WHEEL—FOR TELESCOPIC FORK

GROUP 'I' (b)

ILLUS. NO.	SALES NO.	DESCRIPTION	NUMBER OFF
S.A.	MTK271	Front wheel, complete	1
N.I.	MTK150	Wheel rim, 22 $\frac{1}{2}$ " \times 2 $\frac{1}{4}$ "	1
N.I.	MTK272	Spoke	36
N.I.	MTK152	Spoke nipple	36
1	MTK109	Front hub, complete (Parts 1 to 23)	1
2	MTK110	Front wheel spindle	1
3	MMN196	Nut, front wheel spindle	2
4	MMW272	Washer, wheel spindle	2
5	MMN197	Shouldered nut, wheel spindle	1
6	MMN198	Locknut, bearing cone	2
7	MMW273	Keyed washer	3
8	MTK111	Dust cap, wheel bearing	2
9	MTK112	Cone, wheel bearing	2
10	MML103	Ball bearing, ϕ $\frac{1}{2}$ "	20
11	MTK113	Cup, wheel bearing	2
12	MMW274	Spacing washer, brake plate	1
13	MMN199	Locknut, brake plate	1
14	MTK115	Brake plate, complete (Parts 15 to 22)	1
15	MTK116	Pivot pin, brake shoe	1
16	MMN200	Nut, brake shoe pivot pin	1
17	MTK117	Brake shoe, c/w lining	1 pr.
18	MTK118	End plate, brake shoe	2
19	MTK119	Return spring, brake shoe	2
20	MTK120	Brake cam, c/w nut	1
21	MMN201	Nut, brake cam	1
22	MTK121	Lever, brake cam	1
23	MTK122	Spacer, speedometer drive unit	1
S.A.	MTK123	Front wheel spindle, c/w cones and locknuts	1
N.I.	MTK124	Spacer (fitted in lieu of speedometer drive unit and MTK122)	1

S.A.=Sub assembly N.I.=Not illustrated ϕ =Diameter ...
 Tyre and inner tube are as listed on Page 27

REAR WHEEL GROUP 'J'



REAR WHEEL

GROUP 'J'

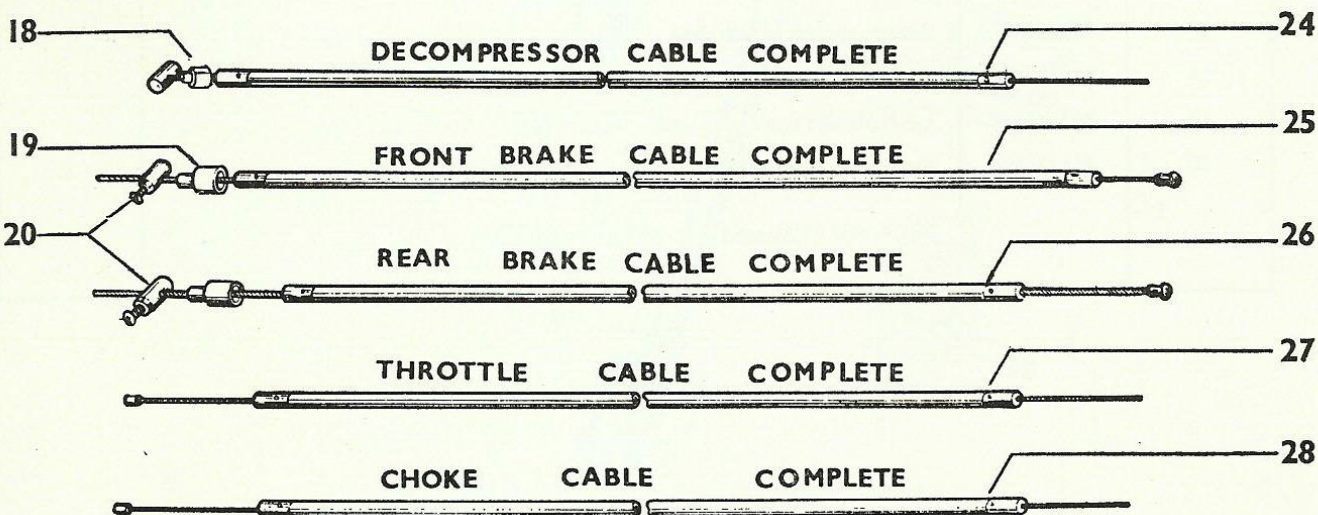
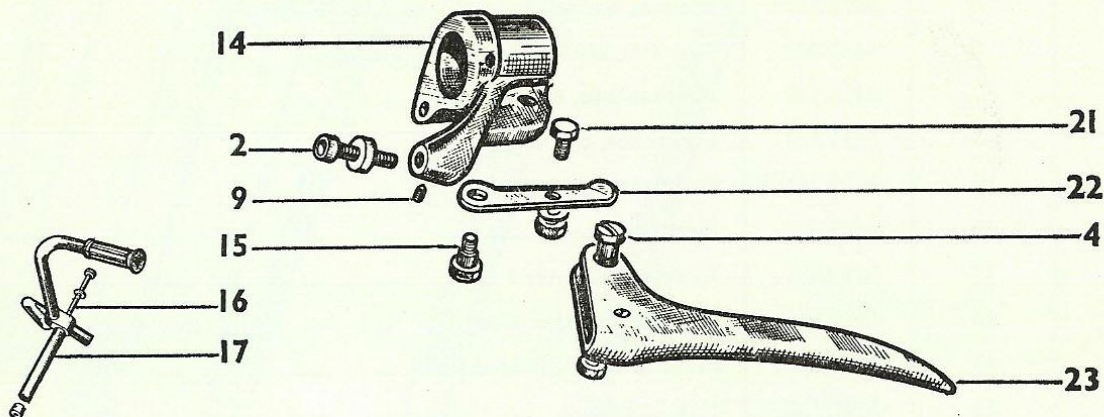
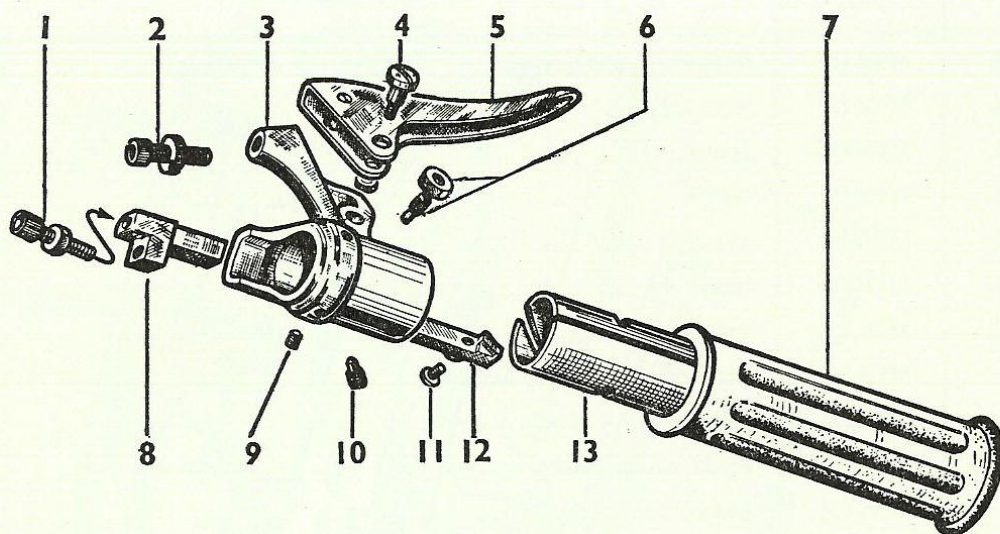
ILLUS. NO.	SALES NO.	DESCRIPTION	NUMBER OFF
N.I.	MTK170	Rear wheel, c/w sprocket... ..	1
N.I.	MTK150	Rim, 22½" × 2¼"	1
N.I.	MTK151	Spoke	36
N.I.	MTK152	Nipple	36
N.I.	MTK153	Tyre, 22½" × 2¼"	1
N.I.	MTK154	Inner tube, 22½" × 2¼"	1
N.I.	MTK155	Rim tape	1
1	MTK265	Distance piece and cap assembly	1
2	MTK135	Felt seal	1
3	MMW278	Shield washer, bearing	1
4	MTK161	Ball journal bearing	2
5	MMW279	Locating washer, distance tube	2
6	MTK172	Rear hub, c/w sprocket (Parts 1 to 20)	1
7	MTK180	Distance tube, 67 mm. long	1
8	MTK144	Brake shoe, c/w lining	1 pr.
9	MTK184	Brake cam, c/w nut	1
10	MTK176	Freewheel	1
11	MTK175	Wheel spindle, rear	1
12	MTK181	Screwed bearing retainer	1
13	MTK182	Brake plate, c/w lined shoes	1
14	MMN200	Nut, brake cam	1
15	MMP147	Bolt, rear sprocket, complete	6
16	MTK187	Sprocket, rear wheel	1
17	MTK145	Return spring, brake shoe	2
18	MTK186	Spring, cam lever	1
19	MTK185	Lever, brake cam	1
20	MMN207	Nut, rear wheel spindle	1

N.I.=Not illustrated

HANDLEBARS AND CONTROL CABLES

GROUP 'K' (a)

(RM.5 MODELS UP TO FRAME No. H1097)



HANDLEBARS AND CONTROL CABLES

GROUP 'K' (a)

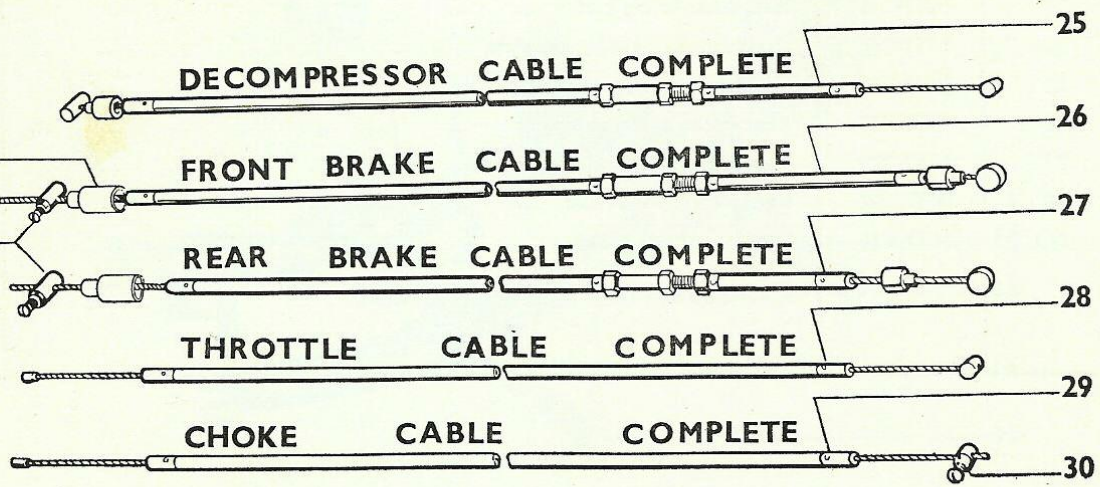
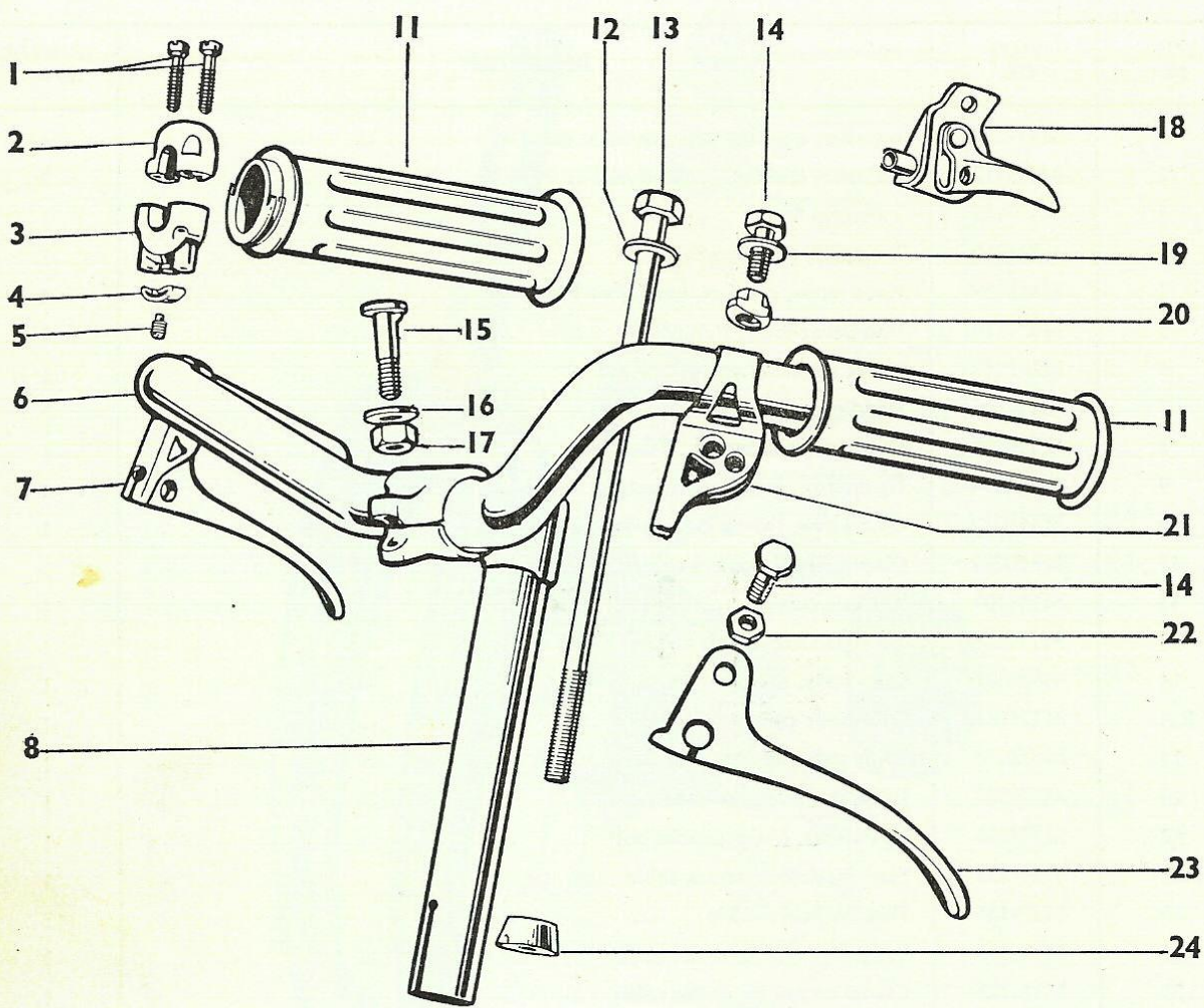
(RM.5 MODELS UP TO FRAME No. H1097)

ILLUS. NO.	SALES NO.	DESCRIPTION	NUMBER OFF
1	MTN209	Adjuster, c/w nut, decompressor cable	1
2	MTN212	Adjuster, c/w nut, brake cables	2
3	MTN202	Twistgrip body	1
S.A.	MTN220	Twistgrip, complete	1
4	MMP158	Pivot screw, c/w nut, handlebar lever	2
5	MTN210	Handlebar lever, R.H.	1
6	MMP159	Sleeve retaining screw, c/w nut	1
7	MTN206	Handlebar grip	2
8	MTN208	Decompressor cursor	1
9	MMB284	Grubscrew, grip body securing	4
10	MMB283	Grubscrew, twistgrip body locating	1
11	MMB282	Clamp screw, control cables	2
12	MTN207	Throttle cursor	1
13	MTN204	Twistgrip sleeve	1
14	MTN203	Grip body, L.H.	1
S.A.	MTN241	Grip body complete, L.H.	1
15	MMB285	Pivot screw, choke lever	1
16	MTN227	Expander bolt, c/w cone	1
17	MTN201	Handlebar, c/w expander bolt	1
18	MTN231	Ferrule, decompressor cable	1
19	MTN136	Ferrule, brake cable	2
20	MTN118	Solderless nipple, brake cable	2
21	MTN225	Clamp complete, choke cable	1
22	MTN205	Choke lever	1
S.A.	MTN219	Choke lever, complete	1
23	MTN211	Handlebar lever, L.H.	1
24	MTN238	Decompressor cable, complete	1
25	MTN235	Front brake cable, complete	1
26	MTN237	Rear brake cable, complete	1
27	MTN239	Throttle cable, complete	1
28	MTN240	Choke cable, complete	1
N.I.	MTN126	Sheath, control cables	2

S.A.=Sub assembly N.I.=Not illustrated

HANDLEBARS AND CONTROL CABLES GROUP 'K' (b)

(RM. 5 MODELS FROM FRAME No. H1097 AND ALL PM. 2 AND NM. 2 MODELS)

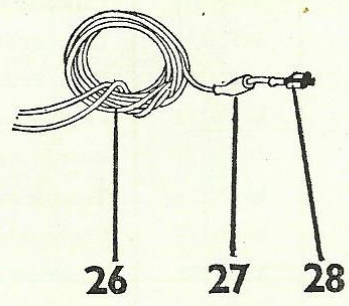
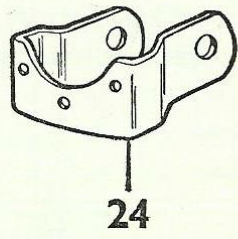
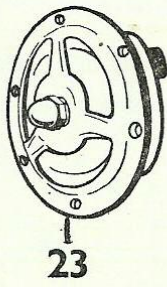
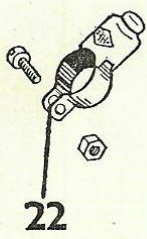
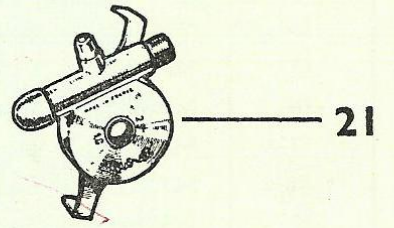
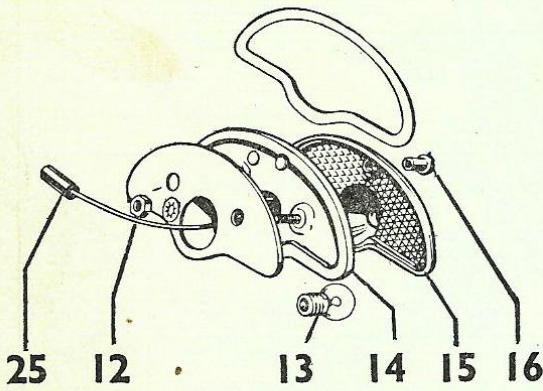
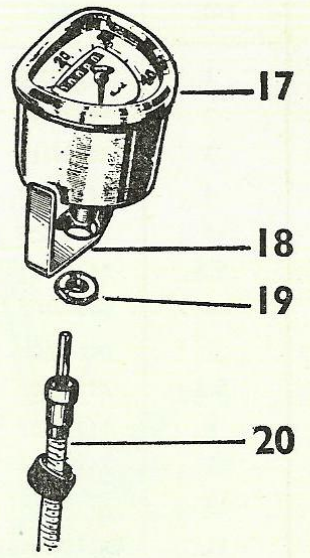
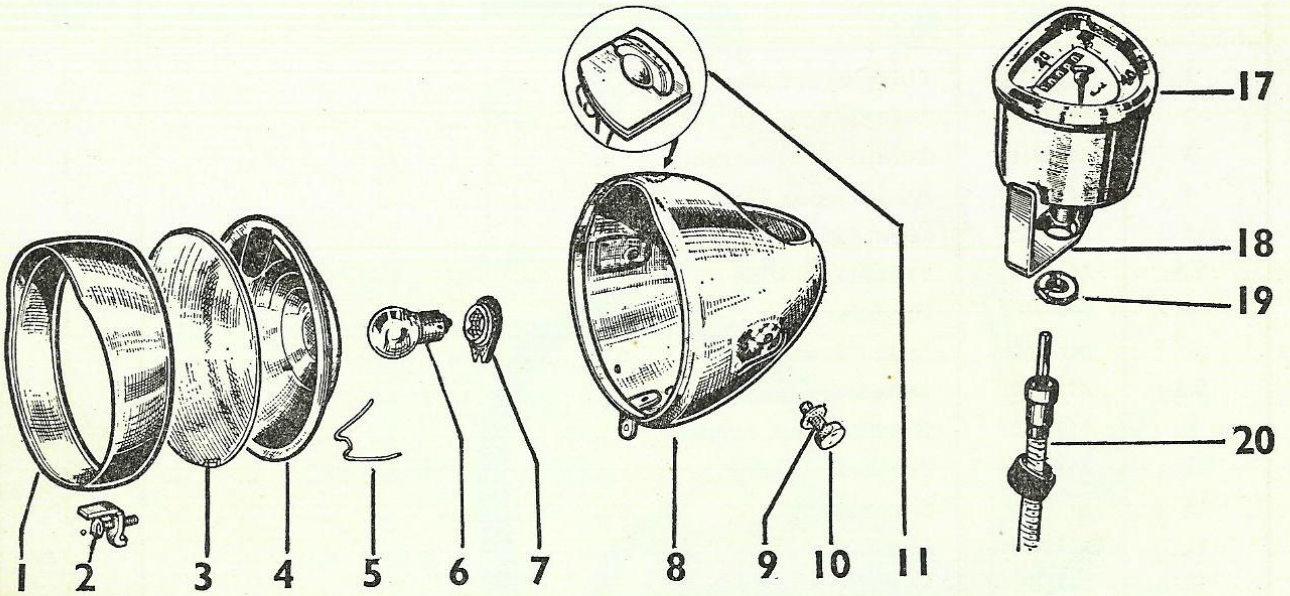


HANDLEBARS AND CONTROL CABLES GROUP 'K' (b)

(RM. 5 MODELS FROM FRAME No. H1097 AND ALL PM. 2 AND NM. 2 MODELS)

ILLUS. NO.	SALES NO.	DESCRIPTION	NUMBER OFF
1	MMB273	Fixing screw, twistgrip	2
2	MTN111	Twistgrip body, top	1
3	MTN112	Twistgrip body, bottom	1
4	MTN113	Friction spring	1
5	MMB257	Screw, friction spring	1
S.A.	MTN114	Twistgrip, complete	1
6	MTN101	Handlebar bend	1
7	MKM116	Brake fulcrum, R.H.	1
S.A.	MTN107	Brake lever complete, R.H.	1
8	MTN137	Handlebar stem, complete	1
9	MTN136	Ferrule, brake cable	2
10	MTN118	Solderless nipple	2
11	MTN245	Plastic grips	1 pr.
12	MMW110	Washer, expander bolt	1
13	MTN128	Expander bolt	1
14	MMB129	Bolt, lever fulcrum and clip	4
15	MMB108	Clamp bolt, handlebar	1
16	MMW109	Washer, clamp bolt	1
17	MMN109	Nut, clamp bolt	1
18	MTN115	Choke lever, complete	1
19	MMW105	Plain washer, $\phi \frac{3}{16}$ "	2
20	MMN127	Nut, fulcrum clip	2
21	MKM117	Brake fulcrum, L.H.	1
S.A.	MTN108	Brake lever complete, L.H.	1
22	MMN104	Nut, lever fulcrum	2
23	MTN106	Brake lever	2
24	MTN104	Expander cone	1
25	MTN134	Decompressor cable, complete	1
26	MTN129	Front brake cable, complete, for swinging arm front fork models	1
or 26	MTN252	Front brake cable, complete, for telescopic front fork models	1
27	MTN131	Rear brake cable, complete	1
28	MTN133	Throttle cable, complete	1
29	MTN135	Choke cable, complete	1
30	MTN125	Solderless nipple	1
N.I.	MTN126	Plastic sheath, control cables	2

S.A.=Sub assembly N.I.=Not illustrated ϕ =Diameter



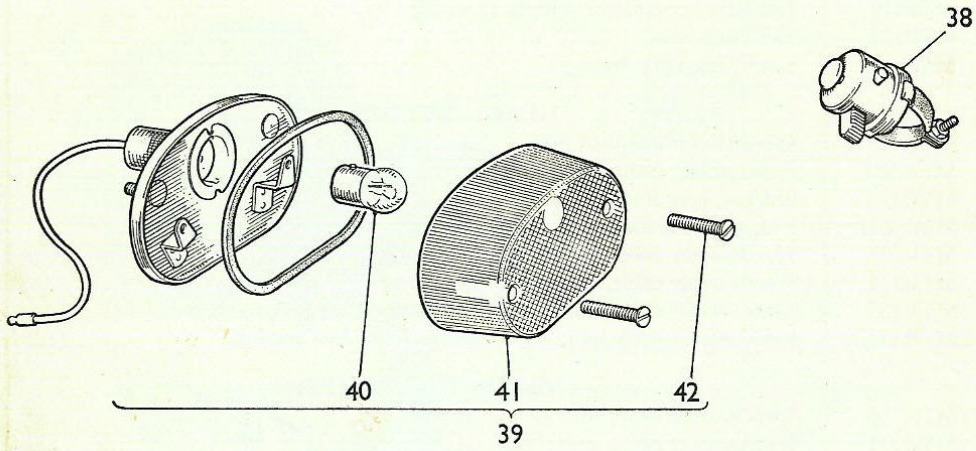
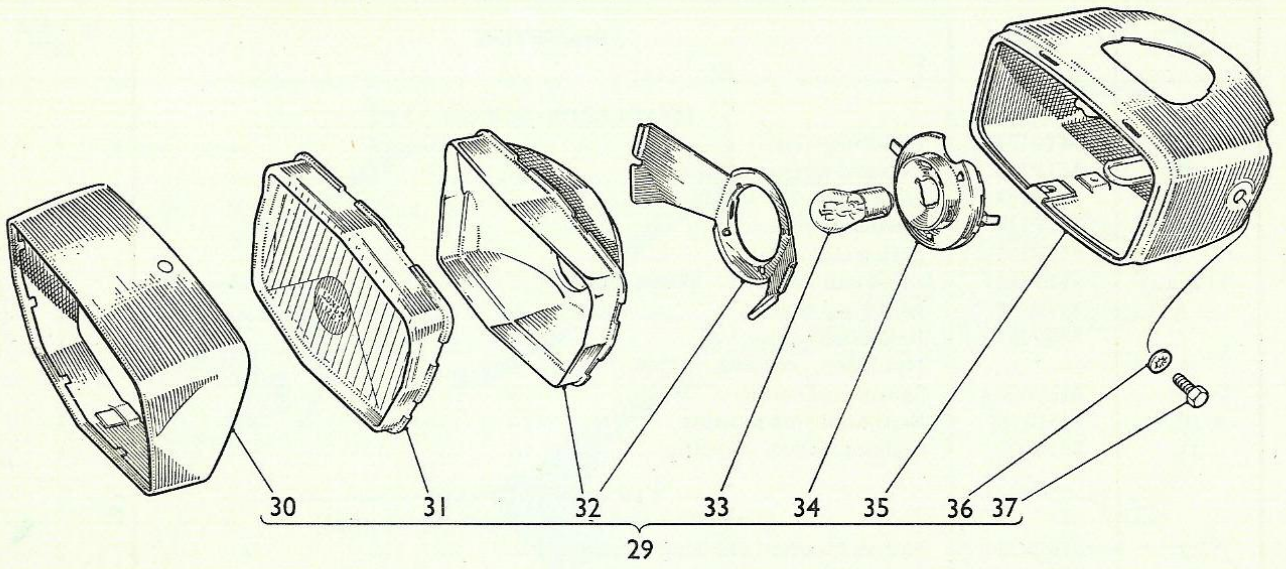
LIGHTING, SPEEDOMETER AND ELECTRIC HORN

GROUP 'L'

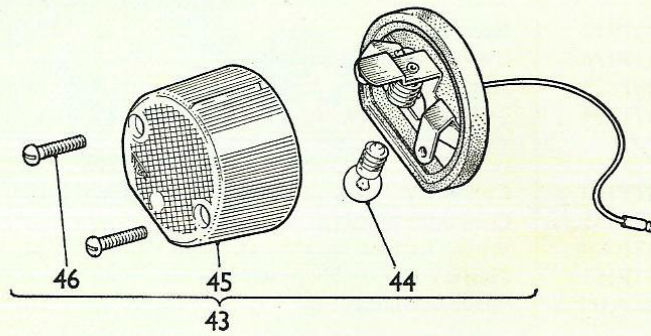
ILLUS. NO.	SALES NO.	DESCRIPTION	NUMBER OFF
HEADLAMP—ROUND TYPE			
1	MTP131	Headlamp rim	1
2	MTP132	Clip and screw, rim securing	1
3	MTP133	Headlamp glass	1
4	MTP134	Headlamp reflector	1
5	MTP135	Spring clip, reflector	4
S.A.	MTP130	Light unit assembly. (Parts 1 to 5)	1
6	MTP136	Headlamp bulb	1
7	MTP137	Bulb holder	1
8	*	Headlamp, complete. (Parts 1 to 11)	1
9	MMW314	Shakeproof washer	2
10	MMB248	Bolt, headlamp securing	2
11	MTP129	Lighting switch, complete	1
LUCAS TAIL LAMP (For Miller and Wipac lamps see next page)			
12	MMN234	Nut and washer, tail lamp securing	2
13	MTP116	Bulb, tail lamp. 6V. 3W. M.E.S.	1
14	MTP119	Tail lamp, complete. (Parts 12 to 16)	1
15	MTP114	Tail lamp lens	1
16	MMB247	Screw, tail lamp lens	1
HURET SPEEDOMETER			
17	MTR125	Speedometer head, M.P.H.	1
or 17	MTR320	Speedometer head, K.P.H.	1
18	MTR130	Bracket, speedometer head	1
19	MMN231	Nut, speedometer head	1
20	MTR131	Speedometer cable, complete. 28½" long	1
or 20	MTR142	Speedometer cable, complete. 21½" long	1
21	MTR133	Speedometer drive unit, for swinging arm front fork models	1
or 21	MTR144	Speedometer drive unit, for telescopic front fork models	1
VEGLIA SPEEDOMETER			
N.I.	MTR286	Speedometer head, M.P.H.	1
N.I.	MTR291	Speedometer cable, complete	1
N.I.	MTR292	Speedometer drive unit	1
ELECTRIC HORN			
22	MTP197	Horn button	1
23	MTP126	Electric horn kit, complete	1
24	MTP127	Horn bracket	1
N.I.	MTP194	Twin wire, horn	1
WIRING			
25	MTP120	Connector	1
N.I.	MTP155	Connector nipple	1
26	MTP229	Wiring harness	1
27	MTP162	Plastic cover, spade terminal	1
28	MTP 161	Spade terminal	1

S.A.=Sub assembly N.I.=Not illustrated

*=See Chart on Page 44 for part numbers which differ according to make and/or colour of machine



MÜLLER TAIL LAMP



WIPAC TAIL LAMP

ILLUS. NO.	SALES NO.	DESCRIPTION	NUMBER OFF
HEADLAMP—RECTANGULAR TYPE			
29	MTP235	Headlamp, complete	1
30	MTP236	Front body, headlamp	1
31	MTP237	Lens, headlamp	1
32	MTP238	Reflector, headlamp	1
33	MTP239	Bulb, headlamp, 6v. 15/15w. long pin	1
34	MTP240	Bulb holder	1
35	MTP241	Rear body, headlamp	1
36	MMW314	Washer, headlamp bolt	2
37	MMB248	Bolt, headlamp	2
38	MTP242	Lighting switch, handlebar fitting	1
N.I.	MTP243	Wiring harness, complete	1
MILLER TAIL LAMP			
39	MTP222	Tail lamp, complete	1
40	MTP158	Bulb, tail lamp. 6v. 3w. S.C.C.	1
41	MTP221	Tail lamp lens	1
42	MMB315	Screw, tail lamp lens	2
WIPAC TAIL LAMP			
43	MTP223	Tail lamp, complete	1
44	MTP116	Bulb, tail lamp. 6v. 3w. M.E.S.	1
45	MTP225	Tail lamp lens	1
46	MMB335	Screw, tail lamp lens	2
S.A.=Sub assembly			
N.I.=Not illustrated			

TOOL KIT

GROUP 'M'

ILLUS. NO.	SALES NO.	DESCRIPTION	NUMBER OFF
N.I.	MTR101	Inflator	1
N.I.	MTR102	Inflator connection	1
N.I.	MTR104	Tool wallet	1
N.I.	MTR105	Spanner, $\frac{1}{8}'' \times \frac{3}{16}'' \times \frac{1}{4}''$ B.S.F	1
N.I.	MTR106	Spanner, cylinder head nuts	1
N.I.	MTR107	Spanner, sparking plug	1
N.I.	MTR108	Spanner, 8 mm. \times 10 mm.	1
N.I.	MTR109	Ring spanner, 16 mm. \times $\frac{1}{2}''$ B.S.F.	1
N.I.	MTR110	Spanner, 12 mm. \times 14 mm.	1
N.I.	MTR111	Combination spanner	1
N.I.	MTR118	Tommy bar	1
N.I.	MTR323	Tool kit, complete	1

N.I. = Not illustrated

ACCESSORIES

GROUP 'N'

N.I.	MTR113	Windscreen, for swinging arm front fork models	1
N.I.	MTR329	Windscreen, for telescopic front fork models	1
N.I.	*	Legshield kit, complete	1
N.I.	MTR122	Legshield fittings, complete	1 set.
N.I.	MTR123	Legshield flaps, c/w rivets	1 set.
N.I.	MTR124	Pannier sub-frame... ..	1
N.I.	BYD680	Pannier bags (grey)	1 pr.
N.I.	BYD681	Pannier bags (Gordon Tartan)	1 pr.
N.I.	BYD682	Pannier bags (Royal Stewart Tartan)	1 pr.

N.I. = Not illustrated
 * = See Chart on Page 44 for part numbers which differ according to make and/or colour of machine

SERVICE EXCHANGE

GROUP 'O'

ILLUS. NO.	SALES NO.	DESCRIPTION	NUMBER OFF
N.I.	MTX114	Engine unit, less magneto, clutch, carburettor, exhaust system and sparking plug	1
N.I.	MTX115	Engine unit, complete with magneto, clutch and carburettor, but less sparking plug and exhaust system	1
N.I.	MTX116	Carburettor, complete with air cleaner, but less control cables	1
N.I.	MTX117	Crankshaft, complete with small end bearing and gudgeon pin	1
N.I.	MTX105	Stator plate, complete with coils, contact breaker and condenser, but less external ignition coil (with BLUE lighting coil)	1
N.I.	MTX167	Stator plate, complete with coils, contact breaker and condenser, but less external ignition coil (with VIOLET lighting coil)	1
N.I.	MTX118	Clutch, complete with variable gear	1
N.I.	MTX108	Clutch shoes, re-lined	1 pr.
N.I.	MTX110	Brake shoes, re-lined	1 pr.
N.I.	*	Frame, bare (for swinging arm front forks only)	1
N.I.	MTX170	Frame, bare, (for telescopic front forks only)	1
N.I.=Not illustrated * =See Chart on Page 44 for part numbers which differ according to make and/or colour of machine			

CONDITIONS OF SERVICE EXCHANGE

This service enables the exchange replacement units listed to be readily available to the owners of our machines.

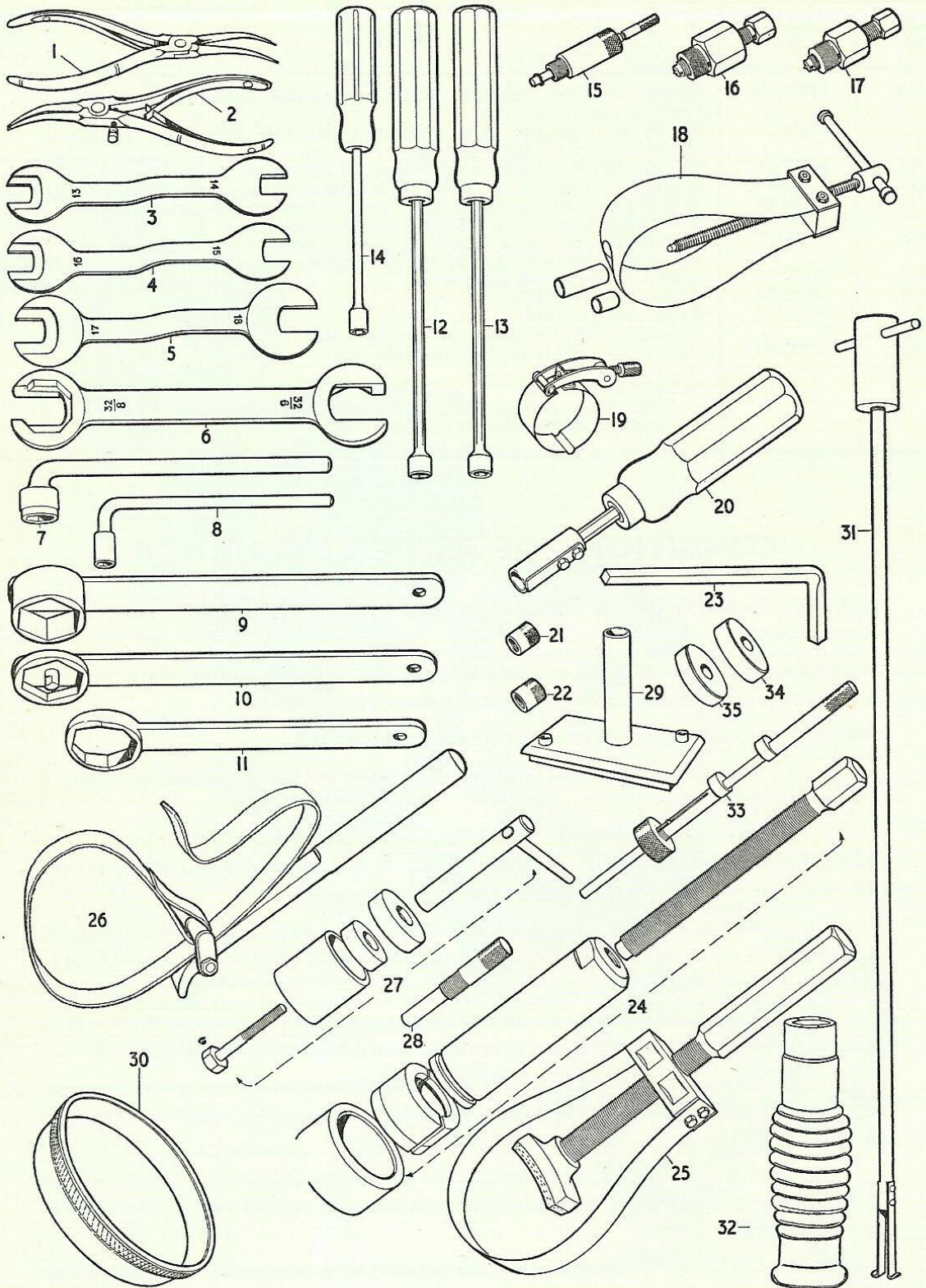
Thus off-the-road time can be cut to a minimum and the owner also has the benefit of a unit overhauled to the most rigorous standards and guaranteed by the factory.

The attention of all concerned is drawn to the following points:—

1. The fullest details should be quoted of the model and type of machine for which the replacement unit is required.
2. This service is essentially an exchange service and only provides for the supply of a standard replacement unit in exchange for the original. It does not provide for the overhaul and return of individual units or for the supply of advance replacements.
3. We cannot undertake to return to the previous owner any component part of a displaced unit and no allowance can be made in respect of any new material which may have been fitted to the unit prior to exchange.
4. All replacement units are built to standard specifications and an extra charge will be made at the current retail price in respect of any component deficient from the displaced unit.
5. We reserve the right to make an extra charge, based on the current retail price, in respect of any major component of the displaced unit found to be damaged or broken due to accident or to be beyond repair.
6. Only units built within the limits of the standard specifications can be supplied and orders stipulating any particular or special specifications cannot be accepted through the medium of this service.
7. It is helpful to remind owners of their statutory obligation to notify their local licensing authority of any change in frame or engine number which may be involved.

SPECIAL WORKSHOP TOOLS

GROUP 'P'



SPECIAL WORKSHOP TOOLS

GROUP 'P'

ILLUS. NO.	SALES NO.	DESCRIPTION
1	MTR218	Circlip pliers, internal type
2	MTR219	Circlip pliers, external type
3	MTR232	Cone spanner, 13×14 mm. A.F.
4	MTR233	Cone spanner, 15×16 mm. A.F.
5	MTR234	Cone spanner, 17×18 mm. A.F.
6	MTR230	Steering head locknut spanner, double ended
7	MTR215	Clutch drum nut wrench, 14 mm. A.F.... ..
8	MTR221	Cylinder head nut wrench, 10 mm. A.F.
9	MTR216	Clutch hub nut wrench, 35 mm. A.F.
*10	MTR229	Steering head lower bolt spanner, 32 mm. A.F.
*11	MTR228	Steering head locknut spanner, 32 mm. A.F.
12	MTR225	Jet socket spanner, 9 mm. A.F.
13	MTR226	Jet socket spanner, 8 mm. A.F.
14	MTR227	Grease nipple socket spanner, 6 mm. A.F.
15	MTR182	Ignition advance gauge
16	MTR207	Magneto cam extractor
17	MTR208	Clutch drum extractor
18	MTR181	Gudgeon pin extractor
19	MTR223	Piston ring clamp
20	MTR217	Clutch key positioning tool
21	MTR209	Thread protector, 10 mm. R.H.
21	MTR281	Thread protector, 11 mm. R.H.
22	MTR210	Thread protector, 10 mm. L.H.
22	MTR211	Thread protector, 11 mm. L.H.
23	MTR212	Flywheel nut wrench, 10 mm. square
24	MTR224	Crankshaft bearing extractor
25	MTR214	Flywheel holding tool, steel band type
26	MTR213	Flywheel holding tool, webbing strap type
27	MTR231	Engine mounting rubber bush fitting tool
28	MTR180	Piston stop
29	MTR237	Clutch holding tool
30	MTR301	Coil centralising ring
31	MTR239	Fork bush removal tool
32	MTR241	Magnetic extractor for clutch washers
33	MTR242	Crankshaft—crankcase gauge
34	MTR243	Dummy bearings, 42×15×13 mm.
35	MTR244	Dummy bearings, 42×16×13 mm.
N.I.	MTR245	Rear hub bearing extractor
N.I.	MTR240	Replacement springs and rivets for MTR239 fork tool
N.I.	MTR247	Exhaust nut spanner

N.I.=Not illustrated A.F.=Across flats

*=Items marked thus are not applicable to this machine

VARIATION CHART

	RALEIGH 'SUPERMATIC' MODEL RM.5		PHILLIPS 'GADABOUT'		NORMAN 'LIDO' MK.3	
	Pearl Grey	Charcoal Grey	Fire Red	Carmine	Ice Blue	Charcoal Grey
Fairing, automatic clutch	MTL171	MTL174	MTL334	MTL302	MTL296	MTL174
Outer chaincase	MTL180	MTF158	MTF183	MTL309	MTL299	MTF158
Inner chaincase	MTJ143	MTX120	MTX166	MTF173	MTJ188	MTX120
Front fork complete, swinging arm type		MTF179	MTF185	MTX147		MTF179
Frame (service exchange) } for swinging arm				MTF180		
Frame complete } front forks only				MTL281		
Tailpiece	MTL121			MTL311	MTL275	
Fairing, steering head	MTL162	MTL179	MTL332	MTL306	MTL300	MTL179
Front mudguard	MTL176			MTL301	MTL295	
Rear mudguard	MTP138			MTP204	MTP203	
Headlamp, complete	MTL182			MTL304	MTL298	
Fairing, L.H. } Up to Frame No. 5R.10410	MTL181			MTL303	MTL297	
Fairing, R.H. }	MTL346					
Fairing, L.H. } Frame No. 5R.10411	MTL348	MTL175	MTL335	MTL310		MTL175
Fairing, R.H. } forwards		MTJ134	MTJ197	MTJ190		MTJ134
Chain cover, rear		MTJ135	MTJ198	MTJ191		MTJ135
Front suspension plate, R.H.		MTL172	MTL333	MTL307		MTL172
Front suspension plate, L.H.				MTR300	MTR297	
Sprocket guard	MTR119			MTJ183	MTJ182	
Legshield kit	MTJ132	MTF157	MTF184	MTF177	MTJ185	
Rear fork bare, swinging arm type				MTJ184		
Front swinging fork, c/w inner chaincase					MTL197	
Front swinging arm					MTL163	
Dual seat					MTL164	
Tank cover, R.H. } for swinging arm front	MTL163					
Tank cover, L.H. } fork models	MTL164					
Tank cover, R.H. } for telescopic fork	MTL315					
Tank cover, L.H. } models	MTL316					
Trademark transfer	MTL185					
Fairing transfer	MTL186					
Rear mudguard transfer				MTL198		
Tank badge	MTL133			MTL190		
Toolbox lid, R.H. } Up to Frame No.	MTL168			MTL191		
Toolbox lid, L.H. } 5R.10410	MTL169					
Toolbox lid, R.H. } Frame No. 5R.10411	MTL313					
Toolbox lid, L.H. } onwards	MTL314					

NUMERICAL INDEX

SALES No.	GROUP	ILLUS. No.	SALES No.	GROUP	ILLUS. No.	SALES No.	GROUP	ILLUS. No.			
BYD680	...	N	N.I.	MMN104	...	Kb	22	MMP150	...	G	54
BYD681	...	N	N.I.	MMN109	...	Kb	17	MMP151	...	H	N.I.
BYD682	...	N	N.I.	MMN127	...	Kb	20	MMP157	...	E	14
				MMN147	...	A	66	MMP158	...	Ka	4
MKM116	...	Kb	7	MMN147	...	H	5	MMP159	...	Ka	6
MKM117	...	Kb	21	MMN148	...	A	1				
				MMN149	...	A	16	MMW101	...	Fb	34
MMB108	...	Kb	15	MMN152	...	A	29	MMW105	...	G	58
MMB129	...	Kb	14	MMN152	...	E	36	MMW105	...	Kb	19
MMB140	...	G	66	MMN152	...	Fa	22	MMW109	...	Kb	16
MMB145	...	A	11	MMN152	...	G	61	MMW110	...	Kb	12
MMB146	...	A	13	MMN153	...	A	30	MMW157	...	Fb	5
MMB147	...	A	56	MMN154	...	A	20	MMW164	...	A	42
MMB149	...	A	65	MMN164	...	B	1	MMW164	...	H	10
MMB151	...	A	27	MMN165	...	B	27	MMW165	...	A	44
MMB152	...	A	53	MMN170	...	E	16	MMW167	...	A	28
MMB153	...	A	59	MMN171	...	E	34	MMW168	...	A	9
MMB155	...	A	S.A.	MMN173	...	G	28	MMW169	...	A	9
MMB165	...	B	7	MMN174	...	H	9	MMW170	...	A	9
MMB172	...	G	25	MMN175	...	H	12	MMW171	...	A	5
MMB177	...	C	16	MMN182	...	C	1	MMW173	...	A	6
MMB179	...	C	18	MMN183	...	C	9	MMW180	...	A	2
MMB180	...	C	13	MMN187	...	Fb	20	MMW181	...	A	54
MMB182	...	C	26	MMN188	...	Fb	30	MMW181	...	G	52
MMB192	...	Fb	22	MMN189	...	Fb	35	MMW182	...	A	21
MMB193	...	Fb	32	MMN190	...	Fa	18	MMW182	...	A	21
MMB194	...	Fb	33	MMN191	...	Fa	3	MMW182	...	Fa	21
MMB195	...	Fb	4	MMN196	...	Ia	1	MMW202	...	B	13
MMB196	...	Fb	7	MMN196	...	Ib	3	MMW203	...	B	N.I.
MMB197	...	Fa	20	MMN197	...	Ia	4	MMW204	...	B	N.I.
MMB199	...	Fa	17	MMN197	...	Ib	5	MMW205	...	B	N.I.
MMB206	...	G	64	MMN198	...	Ib	6	MMW207	...	B	18
MMB207	...	G	6	MMN199	...	Ia	3	MMW208	...	B	3
MMB208	...	G	9	MMN199	...	Ib	13	MMW231	...	E	19
MMB209	...	G	16	MMN200	...	Ia	15	MMW233	...	E	35
MMB210	...	G	30	MMN200	...	Ib	16	MMW234	...	E	38
MMB211	...	G	49	MMN200	...	J	14	MMW236	...	E	6
MMB212	...	G	50	MMN201	...	Ib	21	MMW237	...	G	55
MMB213	...	G	51	MMN206	...	Ia	17	MMW238	...	H	1
MMB236	...	D	12	MMN207	...	J	20	MMW239	...	Fa	24
MMB237	...	D	25	MMN217	...	G	65	MMW239	...	G	60
MMB238	...	D	8	MMN220	...	G	31	MMW247	...	C	6
MMB247	...	L	16	MMN221	...	G	56	MMW250	...	C	19
MMB248	...	L	10	MMN226	...	D	27	MMW251	...	C	2
MMB248	...	L	37	MMN227	...	D	30	MMW265	...	Fb	24
MMB257	...	Kb	5	MMN228	...	D	30	MMW266	...	Fa	23
MMB273	...	Kb	1	MMN231	...	L	19	MMW272	...	Ia	2
MMB277	...	A	24	MMN234	...	L	12	MMW272	...	Ib	4
MMB278	...	G	48	MMN247	...	A	41	MMW273	...	Ib	7
MMB281	...	G	53	MMN249	...	B	27	MMW274	...	Ib	12
MMB282	...	Ka	11					MMW277	...	Ia	16
MMB283	...	Ka	10	MMP130	...	A	18	MMW278	...	Ia	7
MMB284	...	Ka	9	MMP133	...	E	42	MMW278	...	J	3
MMB285	...	Ka	15	MMP134	...	E	47	MMW279	...	J	5
MMB315	...	L	42	MMP135	...	E	14	MMW288	...	G	59
MMB335	...	L	46	MMP136	...	G	22	MMW289	...	G	N.I.
				MMP138	...	G	19	MMW293	...	G	57
MML101	...	Fa	7	MMP139	...	H	2	MMW294	...	G	7
MML101	...	Fb	29	MMP140	...	H	4	MMW307	...	D	26
MML103	...	Ib	10	MMP141	...	H	15	MMW308	...	D	7
MML107	...	B	6	MMP144	...	C	29	MMW314	...	L	9
				MMP147	...	J	15	MMW314	...	L	36
								MMW361	...	B	19

NUMERICAL INDEX

SALES No.	GROUP	ILLUS. No.	SALES No.	GROUP	ILLUS. No.	SALES No.	GROUP	ILLUS. No.			
MMW364	...	H	14	MTB120	...	B	2	MTF121	...	G	29
MTA105	...	A	37	MTB121	...	B	4	MTF123	...	G	23
MTA106	...	A	36	MTB122	...	B	5	MTF126	...	H	11
MTA107	...	A	38	MTB123	...	B	8	MTF127	...	H	3
MTA108	...	A	45	MTB124	...	B	21	MTF129	...	H	13
MTA109	...	A	46	MTB125	...	B	12	MTF130	...	H	6
MTA110	...	A	39	MTB126	...	B	22	MTF131	...	H	7
MTA112	...	A	40	MTB127	...	B	11	MTF157	...	G	24
MTA116	...	A	49	MTB128	...	B	9	MTF158	...	G	34
MTA118	...	A	69	MTB129	...	B	25	MTF173	...	G	34
MTA121	...	A	51	MTB130	...	B	17	MTF177	...	G	24
MTA122	...	A	32	MTB131	...	B	S.A.	MTF179	...	G	1
MTA123	...	A	31	MTD174	...	E	28	MTF180	...	G	1
MTA124	...	A	31	MTD175	...	E	3	MTF183	...	G	34
MTA125	...	A	33	MTD177	...	E	30	MTF184	...	G	24
MTA126	...	A	34	MTD179	...	E	29	MTF185	...	G	1
MTA127	...	A	35	MTD181	...	E	18	MTF193	...	G	1
MTA131	...	A	7	MTD183	...	E	8	MTH106	...	C	17
MTA132	...	A	8	MTD184	...	E	25	MTH110	...	C	23
MTA134	...	A	3	MTD185	...	E	26	MTH111	...	C	24
MTA135	...	A	4	MTD188	...	E	22	MTH130	...	C	37
MTA136	...	A	12	MTD189	...	E	23	MTH131	...	C	36
MTA139	...	A	15	MTD190	...	E	21	MTH132	...	C	34
MTA141	...	A	19	MTD191	...	E	31	MTH137	...	C	28
MTA145	...	A	N.I.	MTD192	...	E	33	MTH138	...	C	20
MTA146	...	A	N.I.	MTD195	...	E	9	MTH139	...	C	22
MTA147	...	A	62	MTD196	...	E	10	MTH140	...	C	21
MTA148	...	A	64	MTD198	...	E	1	MTH141	...	C	3
MTA149	...	A	63	MTD199	...	E	4	MTH142	...	C	4
MTA150	...	A	43	MTD201	...	E	39	MTH143	...	C	7
MTA152	...	A	47	MTD203	...	E	46	MTH144	...	C	5
MTA154	...	A	48	MTD210	...	E	13	MTH145	...	C	8
MTA155	...	A	50	MTD211	...	E	5	MTH146	...	C	11
MTA156	...	A	68	MTD213	...	E	7	MTH147	...	C	10
MTA157	...	A	67	MTD215	...	E	20	MTH148	...	C	12
MTA161	...	A	52	MTD216	...	E	27	MTH149	...	C	15
MTA162	...	A	14	MTD217	...	E	17	MTH150	...	C	14
MTA163	...	A	55	MTD220	...	E	32	MTH151	...	C	27
MTA165	...	A	58	MTD221	...	E	24	MTH152	...	C	25
MTA166	...	A	60	MTD222	...	E	11	MTH153	...	C	25
MTA167	...	A	61	MTD223	...	E	2	MTH154	...	C	25
MTA168	...	A	17	MTD224	...	E	41	MTH156	...	C	30
MTA169	...	A	23	MTD225	...	E	44	MTH210	...	C	31
MTA171	...	A	22	MTD226	...	E	43	MTH211	...	C	32
MTA172	...	A	26	MTD228	...	E	40	MTH213	...	C	33
MTA173	...	A	25	MTD229	...	E	37	MTH214	...	C	S.A.
MTA174	...	A	S.A.	MTD238	...	E	45	MTH249	...	C	35
MTA283	...	A	57	MTD243	...	E	15	MTJ103	...	Fb	9
MTA311	...	A	10	MTD244	...	E	12	MTJ104	...	Fb	10
MTB106	...	B	23	MTD254	...	E	8	MTJ105	...	Fb	11
MTB107	...	B	14	MTF102	...	G	20	MTJ106	...	Fb	12
MTB108	...	B	24	MTF103	...	G	21	MTJ108	...	Fb	14
MTB109	...	B	28	MTF111	...	G	11	MTJ111	...	Fb	17
MTB110	...	B	10	MTF114	...	G	12	MTJ112	...	Fb	18
MTB112	...	B	20	MTF115	...	G	13	MTJ113	...	Fb	19
MTB117	...	B	15	MTF116	...	G	17	MTJ115	...	Fb	21
MTB118	...	B	16	MTF117	...	G	18	MTJ116	...	Fb	23
MTB119	...	B	26	MTF119	...	G	26	MTJ117	...	Fb	25
				MTF120	...	G	27	MTJ118	...	Fa	5

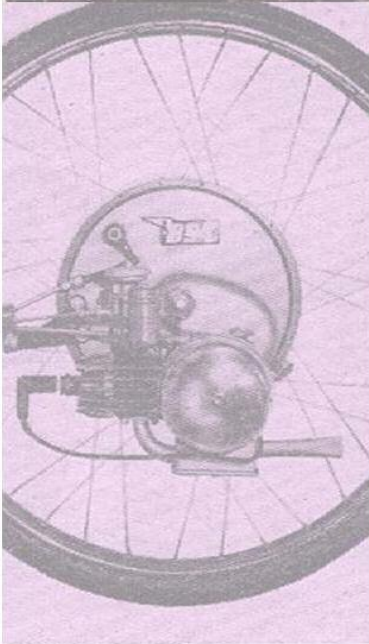
NUMERICAL INDEX

SALES No.	GROUP	ILLUS. No.	SALES No.	GROUP	ILLUS. No.	SALES No.	GROUP	ILLUS. No.			
MTJ118	...	Fb	26	MTK150	...	Ia	N.I.	MTL172	...	G	33
MTJ119	...	Fa	6	MTK150	...	Ib	N.I.	MTL174	...	G	35
MTJ119	...	Fo	27	MTK150	...	J	N.I.	MTL175	...	G	36
MTJ120	...	Fb	28	MTK151	...	Ia	N.I.	MTL176	...	G	37
MTJ121	...	Fb	S.A.	MTK151	...	J	N.I.	MTL177	...	G	40
MTJ122	...	Fb	31	MTK152	...	Ia	N.I.	MTL178	...	G	41
MTJ123	...	Fb	36	MTK152	...	Ib	N.I.	MTL179	...	G	42
MTJ127	...	Fb	6	MTK152	...	J	N.I.	MTL180	...	G	44
MTJ128	...	Fb	8	MTK153	...	Ia	N.I.	MTL181	...	G	45
MTJ132	...	Fa	1	MTK153	...	J	N.I.	MTL182	...	G	46
MTJ133	...	Fa	2	MTK154	...	Ia	N.I.	MTL183	...	G	62
MTJ134	...	Fa	10	MTK154	...	J	N.I.	MTL184	...	G	63
MTJ135	...	Fa	13	MTK155	...	Ia	N.I.	MTL185	...	G	N.I.
MTJ137	...	Fa	12	MTK155	...	J	N.I.	MTL186	...	G	N.I.
MTJ138	...	Fa	11	MTK158	...	Ia	20	MTL189	...	G	N.I.
MTJ139	...	Fa	14	MTK159	...	Ia	5	MTL190	...	G	3
MTJ140	...	Fa	15	MTK160	...	Ia	6	MTL191	...	G	4
MTJ141	...	Fa	16	MTK161	...	Ia	8	MTL194	...	G	N.I.
MTJ142	...	Fa	19	MTK161	...	J	4	MTL196	...	H	8
MTJ143	...	Fa	S.A.	MTK162	...	Ia	19	MTL197	...	H	8
MTJ144	...	Fa	8	MTK163	...	Ia	21	MTL198	...	H	8
MTJ145	...	Fa	4	MTK164	...	Ia	22	MTL199	...	H	N.I.
MTJ146	...	Fa	9	MTK165	...	Ia	13	MTL275	...	G	38
MTJ177	...	Fb	15	MTK167	...	Ia	18	MTL281	...	G	38
MTJ182	...	Fa	1	MTK168	...	Ia	11	MTL295	...	G	37
MTJ183	...	Fa	1	MTK169	...	Ia	14	MTL296	...	G	32
MTJ184	...	Fa	2	MTK170	...	J	N.I.	MTL297	...	G	45
MTJ185	...	Fa	2	MTK172	...	J	6	MTL298	...	G	46
MTJ188	...	Fa	S.A.	MTK175	...	J	11	MTL299	...	G	44
MTJ189	...	Fa	S.A.	MTK176	...	J	10	MTL300	...	G	2
MTJ190	...	Fa	10	MTK180	...	J	7	MTL301	...	G	37
MTJ191	...	Fa	13	MTK181	...	J	12	MTL302	...	G	32
MTJ196	...	Fb	13	MTK182	...	J	13	MTL303	...	G	45
MTJ197	...	Fa	10	MTK184	...	J	9	MTL304	...	G	46
MTJ198	...	Fa	13	MTK185	...	J	19	MTL305	...	G	44
MTJ206	...	Fb	S.A.	MTK186	...	J	18	MTL306	...	G	42
MTJ207	...	Fb	1	MTK187	...	J	16	MTL307	...	G	33
MTJ208	...	Fb	3	MTK265	...	J	1	MTL309	...	G	35
MTJ209	...	Fb	2	MTK271	...	Ib	S.A.	MTL310	...	G	36
				MTK272	...	Ib	N.I.	MTL311	...	G	2
MTK109	...	Ib	1	MTL111	...	G	47	MTL313	...	G	14
MTK110	...	Ib	2	MTL121	...	G	38	MTL314	...	G	15
MTK111	...	Ib	8	MTL123	...	G	39	MTL315	...	G	3
MTK112	...	Ib	9	MTL128	...	G	43	MTL316	...	G	4
MTK113	...	Ib	11	MTL133	...	G	10	MTL332	...	G	42
MTK115	...	Ib	14	MTL136	...	G	10	MTL333	...	G	33
MTK116	...	Ib	15	MTL137	...	G	N.I.	MTL334	...	G	35
MTK117	...	Ib	17	MTL140	...	G	10	MTL335	...	G	36
MTK118	...	Ib	18	MTL141	...	G	N.I.	MTL346	...	G	46
MTK119	...	Ib	19	MTL142	...	G	N.I.	MTL347	...	G	41
MTK120	...	Ib	20	MTL144	...	G	N.I.	MTL348	...	G	45
MTK121	...	Ib	22	MTL162	...	G	N.I.	MTL349	...	G	40
MTK122	...	Ib	23	MTL163	...	G	2	MTL382	...	G	N.I.
MTK123	...	Ib	S.A.	MTL164	...	G	3	MTL383	...	G	N.I.
MTK124	...	Ib	N.I.	MTL165	...	G	4	MTL384	...	G	N.I.
MTK135	...	J	2	MTL166	...	G	5	MTL385	...	G	N.I.
MTK144	...	Ia	10	MTL168	...	G	8				
MTK144	...	J	8	MTL169	...	G	14				
MTK145	...	Ia	12	MTL170	...	G	15	MTM129	...	D	4
MTK145	...	J	17	MTL171	...	G	N.I.	MTM130	...	D	24
MTK149	...	Ia	N.I.				32	MTM131	...	D	10

NUMERICAL INDEX

SALES No.	GROUP	ILLUS. No.	SALES No.	GROUP	ILLUS. No.	SALES No.	GROUP	ILLUS. No.			
MTM132	...	D	9	MTN235	...	Ka	25	MTR119	...	N	N.I.
MTM133	...	D	11	MTN237	...	Ka	26	MTR122	...	N	N.I.
MTM134	...	D	6	MTN238	...	Ka	24	MTR123	...	N	N.I.
MTM135	...	D	23	MTN239	...	Ka	27	MTR124	...	N	N.I.
MTM136	...	D	22	MTN240	...	Ka	28	MTR125	...	L	17
MTM137	...	D	3	MTN241	...	Ka	S.A.	MTR130	...	L	18
MTM138	...	D	1	MTN245	...	Kb	11	MTR131	...	L	20
MTM139	...	D	28	MTN251	...	G	N.I.	MTR133	...	L	21
MTM143	...	D	16	MTN252	...	Kb	26	MTR144	...	L	21
MTM144	...	D	15					MTR180	...	P	28
MTM145	...	D	17					MTR181	...	P	18
MTM146	...	D	18	MTP114	...	L	15	MTR182	...	P	15
MTM147	...	D	19	MTP116	...	L	13	MTR207	...	P	16
MTM148	...	D	20	MTP116	...	L	44	MTR208	...	P	17
MTM151	...	D	S.A.	MTP119	...	L	14	MTR209	...	P	21
MTM153	...	D	2	MTP120	...	L	25	MTR210	...	P	22
MTM154	...	D	21	MTP126	...	L	23	MTR211	...	P	22
MTM157	...	D	5	MTP127	...	L	24	MTR212	...	P	23
MTM158	...	D	S.A.	MTP129	...	L	11	MTR213	...	P	26
MTM159	...	D	29	MTP130	...	L	S.A.	MTR214	...	P	25
MTM164	...	D	S.A.	MTP131	...	L	1	MTR215	...	P	7
MTM165	...	D	29	MTP132	...	L	2	MTR216	...	P	9
MTM166	...	D	24	MTP133	...	L	3	MTR217	...	P	20
MTM167	...	D	S.A.	MTP134	...	L	4	MTR218	...	P	1
				MTP135	...	L	5	MTR219	...	P	2
MTN101	...	Kb	6	MTP136	...	L	6	MTR221	...	P	8
MTN104	...	Kb	24	MTP137	...	L	7	MTR223	...	P	19
MTN106	...	Kb	23	MTP138	...	L	8	MTR224	...	P	24
MTN107	...	Kb	S.A.	MTP155	...	L	N.I.	MTR225	...	P	12
MTN108	...	Kb	S.A.	MTP158	...	L	40	MTR226	...	P	13
MTN111	...	Kb	2	MTP161	...	D	13	MTR227	...	P	14
MTN112	...	Kb	3	MTP161	...	L	28	MTR230	...	P	6
MTN113	...	Kb	4	MTP162	...	D	14	MTR231	...	P	27
MTN114	...	Kb	S.A.	MTP162	...	L	27	MTR232	...	P	3
MTN115	...	Kb	18	MTP194	...	L	N.I.	MTR233	...	P	4
MTN118	...	Ka	20	MTP197	...	L	22	MTR234	...	P	5
MTN118	...	Kb	10	MTP203	...	L	8	MTR237	...	P	29
MTN125	...	Kb	30	MTP204	...	L	8	MTR241	...	P	32
MTN126	...	Ka	N.I.	MTP221	...	L	41	MTR242	...	P	33
MTN126	...	Kb	N.I.	MTP222	...	L	39	MTR243	...	P	34
MTN128	...	Kb	13	MTP223	...	L	43	MTR244	...	P	35
MTN129	...	Kb	26	MTP225	...	L	45	MTR245	...	P	N.I.
MTN131	...	Kb	27	MTP229	...	L	26	MTR247	...	P	N.I.
MTN133	...	Kb	28	MTP235	...	L	29	MTR281	...	P	21
MTN134	...	Kb	25	MTP236	...	L	30	MTR286	...	L	N.I.
MTN135	...	Kb	29	MTP237	...	L	31	MTR291	...	L	N.I.
MTN136	...	Ka	19	MTP238	...	L	32	MTR292	...	L	N.I.
MTN136	...	Kb	9	MTP239	...	L	33	MTR297	...	N	N.I.
MTN137	...	Kb	8	MTP240	...	L	34	MTR300	...	N	N.I.
MTN201	...	Ka	17	MTP241	...	L	35	MTR301	...	P	30
MTN202	...	Ka	3	MTP242	...	L	38	MTR320	...	L	17
MTN203	...	Ka	14	MTP243	...	L	N.I.	MTR323	...	M	N.I.
MTN204	...	Ka	13								
MTN205	...	Ka	22	MTR101	...	M	N.I.	MTX105	...	O	N.I.
MTN206	...	Ka	7	MTR102	...	M	N.I.	MTX108	...	O	N.I.
MTN207	...	Ka	12	MTR104	...	M	N.I.	MTX110	...	O	N.I.
MTN208	...	Ka	8	MTR105	...	M	N.I.	MTX114	...	O	N.I.
MTN209	...	Ka	1	MTR106	...	M	N.I.	MTX115	...	O	N.I.
MTN210	...	Ka	5	MTR107	...	M	N.I.	MTX116	...	O	N.I.
MTN211	...	Ka	23	MTR108	...	M	N.I.	MTX117	...	O	N.I.
MTN212	...	Ka	2	MTR109	...	M	N.I.	MTX118	...	O	N.I.
MTN219	...	Ka	S.A.	MTR110	...	M	N.I.	MTX120	...	O	N.I.
MTN220	...	Ka	S.A.	MTR111	...	M	N.I.	MTX147	...	O	N.I.
MTN225	...	Ka	21	MTR111	...	M	N.I.	MTX166	...	O	N.I.
MTN227	...	Ka	16	MTR113	...	N	N.I.	MTX167	...	O	N.I.
MTN231	...	Ka	18	MTR118	...	L	N.I.	MTX170	...	O	N.I.

IceniCAM Information Service



www.icenicam.org.uk