

RALEIGH

Automatic

MOPED

MODEL RM.4

SPARE PARTS LIST

RALEIGH

Automatic

MOPED

MODEL RM.4

SPARE PARTS LIST

**Including PHILLIPS PANDA Mk. III MOPED, MODEL PM.1
and NORMAN NIPPY Mk. V MOPED, MODEL NM.1**

RALEIGH INDUSTRIES LIMITED

A  COMPANY

LENTON BOULEVARD

NOTTINGHAM

Telephone: NOTTINGHAM 77761 Telegrams: RALIND, NOTTINGHAM
Telex: NOTTINGHAM 37681

**Issued by:— Raleigh Industries Limited,
Motor Service Department, Lenton Boulevard,
NOTTINGHAM,
ENGLAND.**

CONTENTS

| | Group | Page |
|--|-------|-------|
| Engine and exhaust | A | 4-7 |
| Automatic clutch | B | 8-9 |
| Fuel system | C | 10-11 |
| Flywheel magneto | D | 12-13 |
| Transmission | E | 14-15 |
| Telescopic fork and steering head bearings, RM.4 and N.M.1 | Fa | 16-17 |
| Telescopic fork and steering head bearings, PM.1 ... | Fb | 18-19 |
| Frame and mudguards | G | 20-23 |
| Front wheel | H | 24-25 |
| Rear wheel | I | 26-27 |
| Handlebars and control cables, early models | Ja | 28-29 |
| Handlebars and control cables, later models | Jb | 30-31 |
| Lighting and speedometer, RM.4 | Ka | 32-33 |
| Lighting, NM.1, PM.1 | Kb | 34-35 |
| Tools | L | 36 |
| Accessories | M | 36 |
| Service exchange | N | 37 |
| Special workshop tools | O | 38-39 |
| Numerical index | — | 40-43 |

INSTRUCTIONS FOR ORDERING

It is essential that the following information is provided with every order for spare parts:—

1. Type and Model of the machine
2. Frame and Engine numbers
3. Part number, description, colour and quantity of each spare part required.

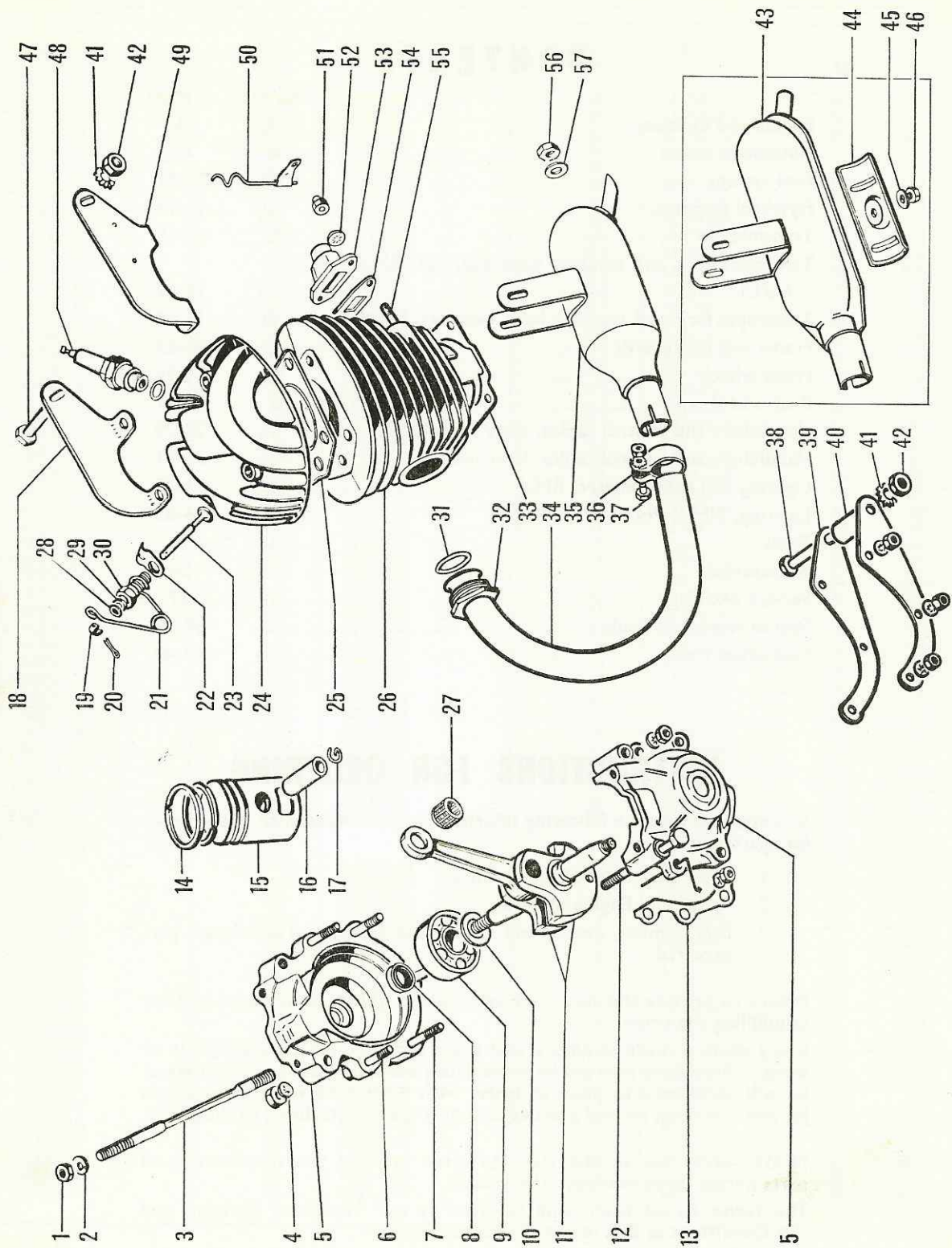
Failure to provide this necessary information will inevitably lead to delay in fulfilling the order.

Every effort is made to ensure that spare parts are readily available in all areas. Should any part not be immediately available from your local agent, he will be pleased to place an order with Raleigh Service Headquarters for you. It is not normal practice to supply spare parts direct to the public.

NOTE.—We reserve the right to alter or vary the specifications of parts herein listed without prior notice.

The terms issued from time to time by our Motorised Division and the Conditions of Sale in our Guarantee apply.

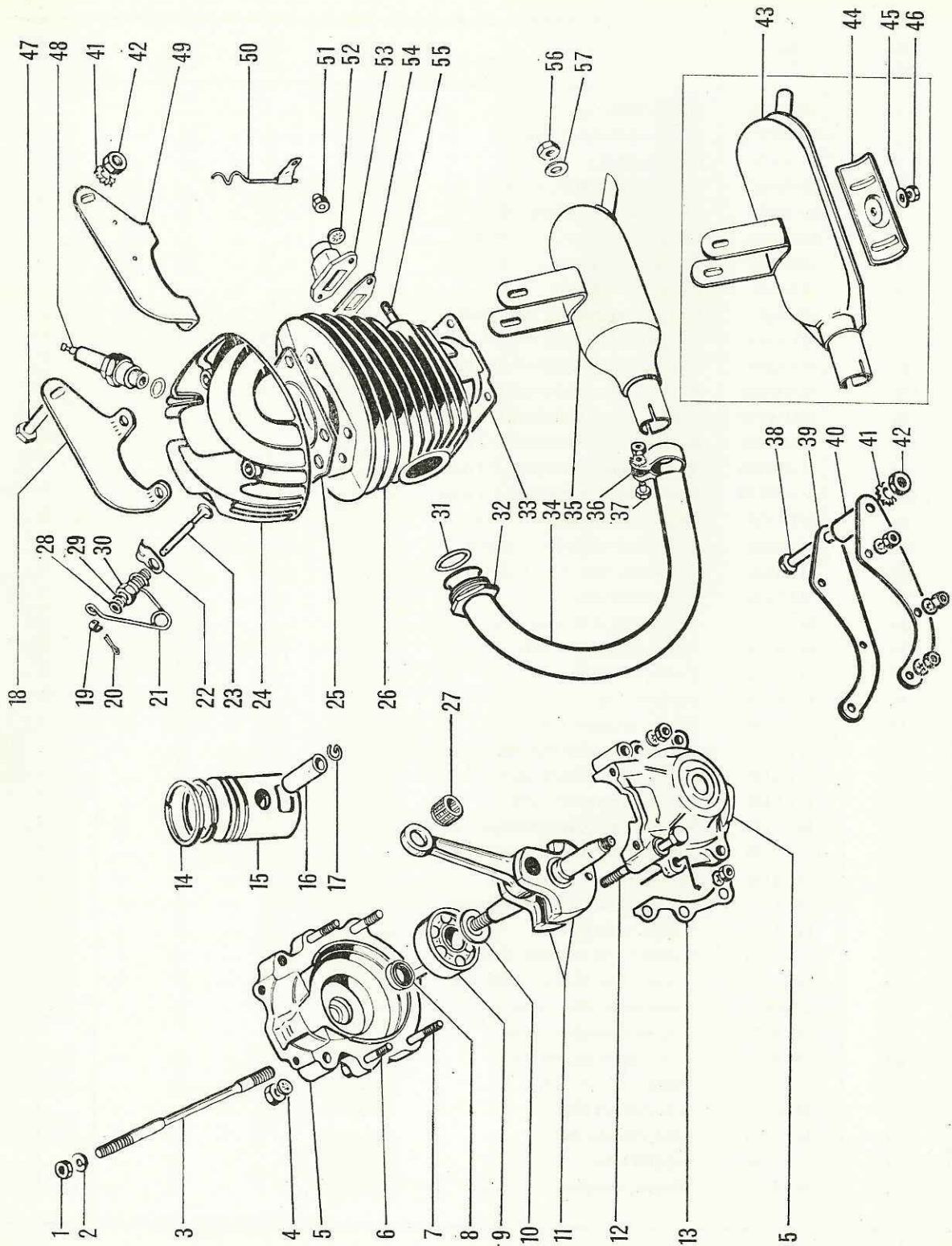
ENGINE & EXHAUST GROUP 'A'



ENGINE & EXHAUST GROUP 'A'

| ILLUS. NO. | SALES NO. | DESCRIPTION | NUMBER OFF |
|---------------|--------------|---|---------------|
| 1 | MMN148 | Nut, ϕ 7 mm. | 9 |
| 2 | MMW171 | Spring washer, ϕ 7 mm. | 4 |
| 3 | MTA134 | Cylinder stud | 4 |
| 4 | MMW172 | Shakeproof washer, ϕ 7 mm. | 7 |
| 5 | MTA135 | Crankcase halves (pair only) | 1 |
| 6 | MMB146 | Crankcase bolt, ϕ 7×1×30 mm. | 2 |
| 7 | MMB147 | Crankcase bolt, ϕ 7×1×47 mm. | 3 |
| 8 | MTA131 | Oil seal, crankshaft | 2 |
| 9 | MTA271 | Ball journal bearing, crankshaft | 2 |
| *9 | MTA132 | Ball journal bearing, crankshaft | 2 |
| 10 | MTA263 | Shim washer, crankshaft, 0·1 mm. | V |
| *10 | MMW168 | Shim washer, crankshaft, 0·1 mm. | V |
| 10 | MMW178 | Shim washer, crankshaft, 0·2 mm. | V |
| *10 | MMW169 | Shim washer, crankshaft, 0·2 mm. | V |
| 10 | MMW179 | Shim washer, crankshaft, 0·3 mm. | V |
| *10 | MMW170 | Shim washer, crankshaft, 0·3 mm. | V |
| 11 | MTA179 | Crankshaft assembly, c/w nuts | 1 |
| *11 | MTA269 | Crankshaft assembly, c/w nuts | 1 |
| 12 | MMB145 | Crankcase bolt, ϕ 7×1·25×45 mm. | 2 |
| 13 | MTA136 | Joint, crankcase | 1 |
| 14 | MTA123 | Piston ring, ϕ 39 mm. | 2 |
| 14 | MTA124 | Piston ring, ϕ 39·1 mm. | 2 |
| †15 | MTA122 | Piston, complete | 1 |
| 16 | MTA125 | Gudgeon pin | 1 |
| 17 | MTA126 | Circlip, gudgeon pin | 2 |
| 18 | MTA101 | Engine mounting bracket, R.H., upper | 1 |
| 19 | MTA105 | Yoke, decompressor valve | 1 |
| 20 | MTA106 | Pin, decompressor valve | 1 |
| 21 | MTA107 | Hairpin spring, decompressor valve | 1 |
| 22 | MTA110 | Anchor plate, decompressor cable | 1 |
| 23 | MTA112 | Decompressor, complete | 1 |
| 24 | MTA115 | Cylinder head, c/w decompressor | 1 |
| 25 | MTA116 | Gasket, cylinder head | 1 |
| 26 | MTA279 | Cylinder, c/w matched piston | 1 |
| 27 | MTA127 | Needle roller bearing, small end... .. | 1 |
| 28 | MMW165 | Retaining washer, valve seal | 1 |
| 29 | MTA108 | Seal, decompressor valve | 1 |
| 30 | MTA109 | Body, decompressor valve | 1 |
| 31 | MTA139 | Gasket, exhaust pipe | 1 |
| 32 | MMN149 | Nut, exhaust pipe | 1 |
| 33 | MTA121 | Joint, cylinder base | 1 |
| 34 | MTA140 | Exhaust pipe | 1 |
| 35 | MTA285 | Silencer, complete | 1 |

ENGINE & EXHAUST GROUP 'A'

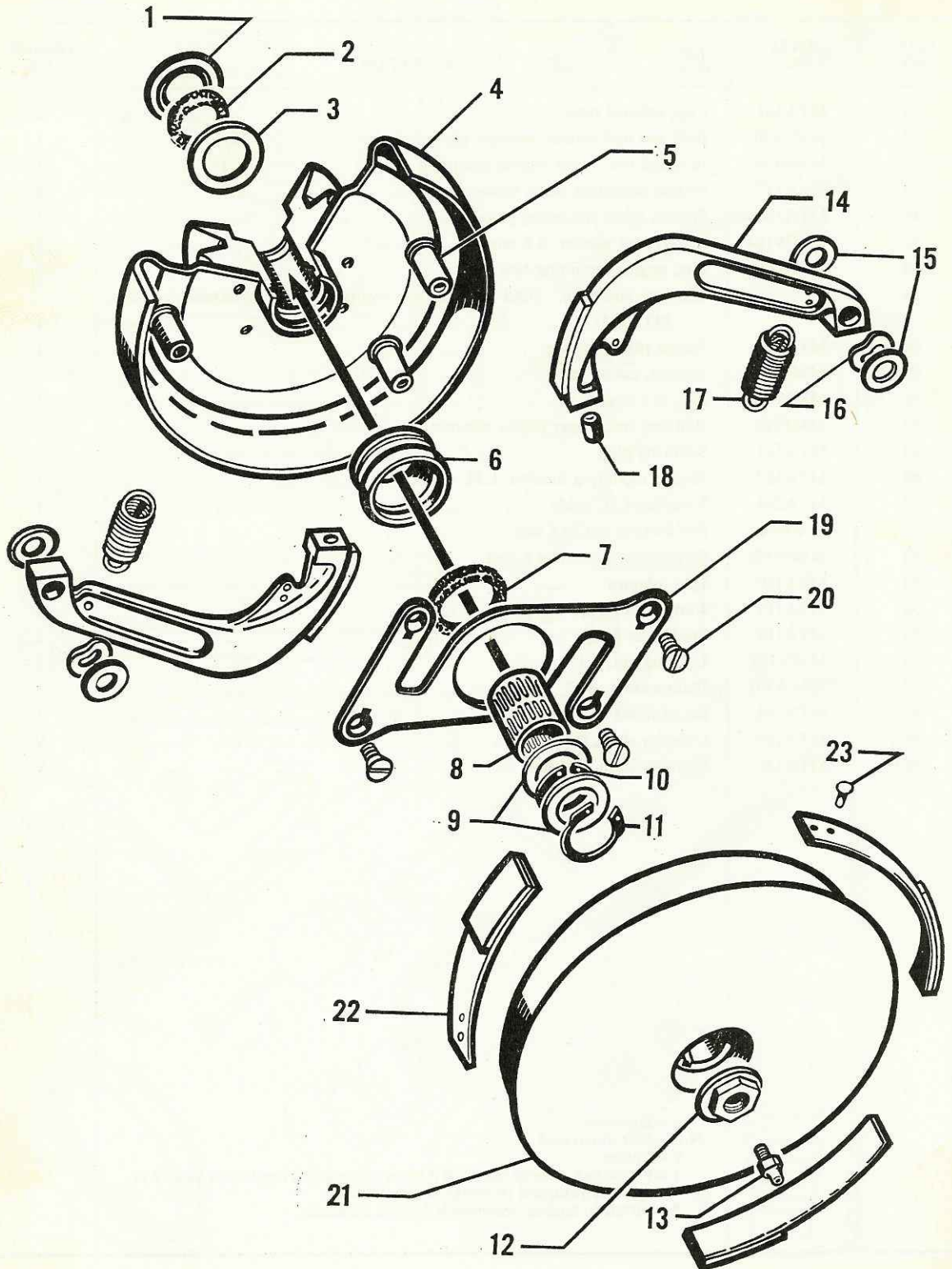


ENGINE & EXHAUST GROUP 'A'

| ILLUS. NO. | SALES NO. | DESCRIPTION | NUMBER OFF |
|---------------|--------------|---|---------------|
| 36 | MTA141 | Clip, exhaust pipe | 1 |
| 37 | MMP130 | Bolt, nut and washer, exhaust pipe clip | 1 |
| 38 | MMP129 | Bolt and nut, lower engine mounting | 1 |
| 39 | MTA137 | Engine mounting plate, lower | 2 |
| 40 | MTA138 | Spacer, lower mounting plates | 1 |
| 41 | MMW164 | Shakeproof washer, ø 8 mm. | 2 |
| 42 | MMN146 | Nut, engine mounting bolt | 2 |
| 43 | | Silencer, complete. (Old pattern, not available as a replacement. Use MTA285) | 1 |
| 44 | MTA143 | Access plate, silencer | 1 |
| 45 | MMW174 | Washer, access plate | 1 |
| 46 | MMN150 | Nut, ø 6 mm. | 1 |
| 47 | MMP128 | Bolt and nut, upper engine mounting | 1 |
| 48 | MTA113 | Sparking plug | 1 |
| 49 | MTA102 | Engine mounting bracket, L.H. upper | 1 |
| 50 | MTA284 | Retainer, L.T. cable | 1 |
| 51 | MMN147 | Self locking nut, ø 6 mm. | 2 |
| 52 | MMW181 | Shakeproof washer, ø 6 mm. | 2 |
| 53 | MTA120 | Inlet adaptor | 1 |
| 54 | MTA119 | Joint, inlet flange | 1 |
| 55 | MTA118 | Stud, inlet flange | 2 |
| 56 | MMN189 | Locking nut, ø ¼" | 1 |
| 57 | MMW101 | Plain washer, ø ¼" | 1 |
| N.I. | MTA144 | Set of joints and gaskets | 1 |
| N.I. | MTA145 | Cylinder shim, 0.2 mm. | V |
| N.I. | MTA146 | Cylinder shim, 0.4 mm. | V |

ø = Diameter
 N.I. = Not illustrated
 V = Varies
 † = Piston can only be supplied if letter on cylinder top face is quoted or
 cylinder returned to works for matching
 * = Fitted to engine numbers R.100101 onwards

AUTOMATIC CLUTCH GROUP 'B'

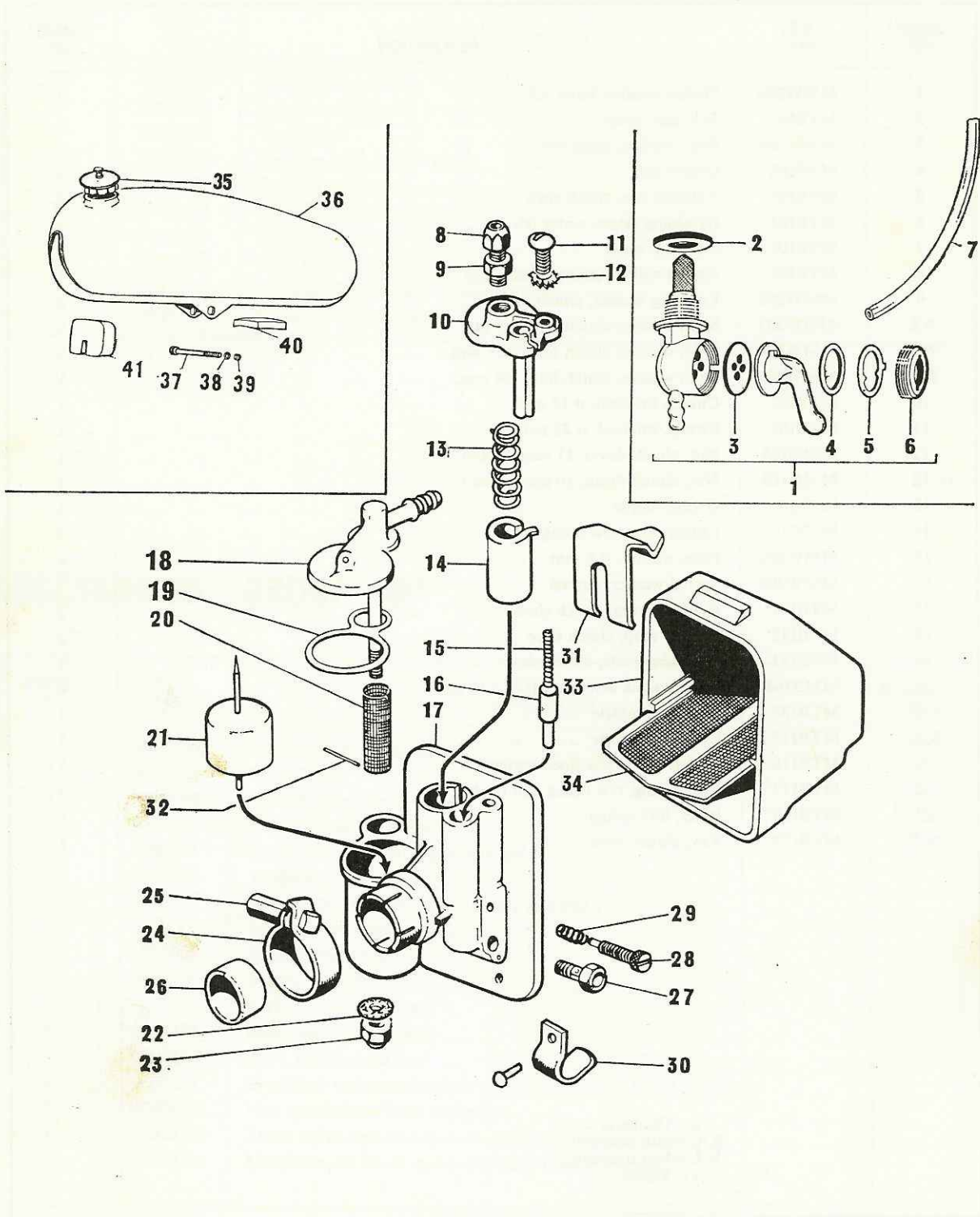


AUTOMATIC CLUTCH GROUP 'B'

| ILLUS. NO. | SALES NO. | DESCRIPTION | NUMBER OFF |
|------------|-----------|---|------------|
| 1 | MMW200 | Dished washer, inner felt | 1 |
| 2 | MTB101 | Felt seal, inner | 1 |
| 3 | MMW201 | Plain washer, inner felt | 1 |
| 4 | MTB102 | Clutch hub | 1 |
| 5 | MTB103 | Fulcrum pin, clutch shoe | 4 |
| 6 | MTB104 | Retaining sleeve, outer felt | 1 |
| 7 | MTB105 | Felt seal, outer | 1 |
| 8 | MTB106 | Needle roller bearing, clutch hub | 1 |
| 9 | MMW202 | Locating washer, clutch hub | 2 |
| N.I. | MMW203 | Shim washer, clutch hub, 0.1 mm. | V |
| N.I. | MMW204 | Shim washer, clutch hub, 0.25 mm. | V |
| N.I. | MMW205 | Shim washer, clutch hub, 0.4 mm. | V |
| 10 | MTB107 | Circlip, external, ϕ 15 mm. | 1 |
| 11 | MTB108 | Circlip, internal, ϕ 22 mm. | 1 |
| 12 | MMN166 | Nut, clutch drum, 11 mm. thread | 1 |
| or 12 | MMN163 | Nut, clutch drum, 10 mm. thread | 1 |
| 13 | MTB109 | Grease nipple | 1 |
| 14 | MTB110 | Clutch shoe, c/w lining | 2 |
| 15 | MMW206 | Plain washer, ϕ 8 mm. | 4 |
| 16 | MMW207 | Spring washer, curved | 2 |
| 17 | MTB111 | Return spring, clutch shoe | 2 |
| 18 | MTB112 | Rubber stop, clutch shoe | 2 |
| 19 | MTB113 | Retaining plate, clutch shoe | 1 |
| 20 | MMB164 | Countersunk screw, $4 \times 0.75 \times 10$ mm. | 4 |
| S.A. | MTB132 | Clutch, complete | 1 |
| S.A. | MTB115 | Clutch, complete | 1 |
| 21 | MTB116 | Clutch drum, c/w lined springs | 1 |
| 22 | MTB117 | Leaf spring, c/w lining and rivets | 3 |
| 23 | MTB118 | Rivet, leaf spring | 6 |
| N.I. | MTB119 | Key, clutch drum | 1 |

ϕ = Diameter
 S.A. = Sub assembly
 N.I. = Not illustrated
 V = Varies

FUEL SYSTEM GROUP 'C'

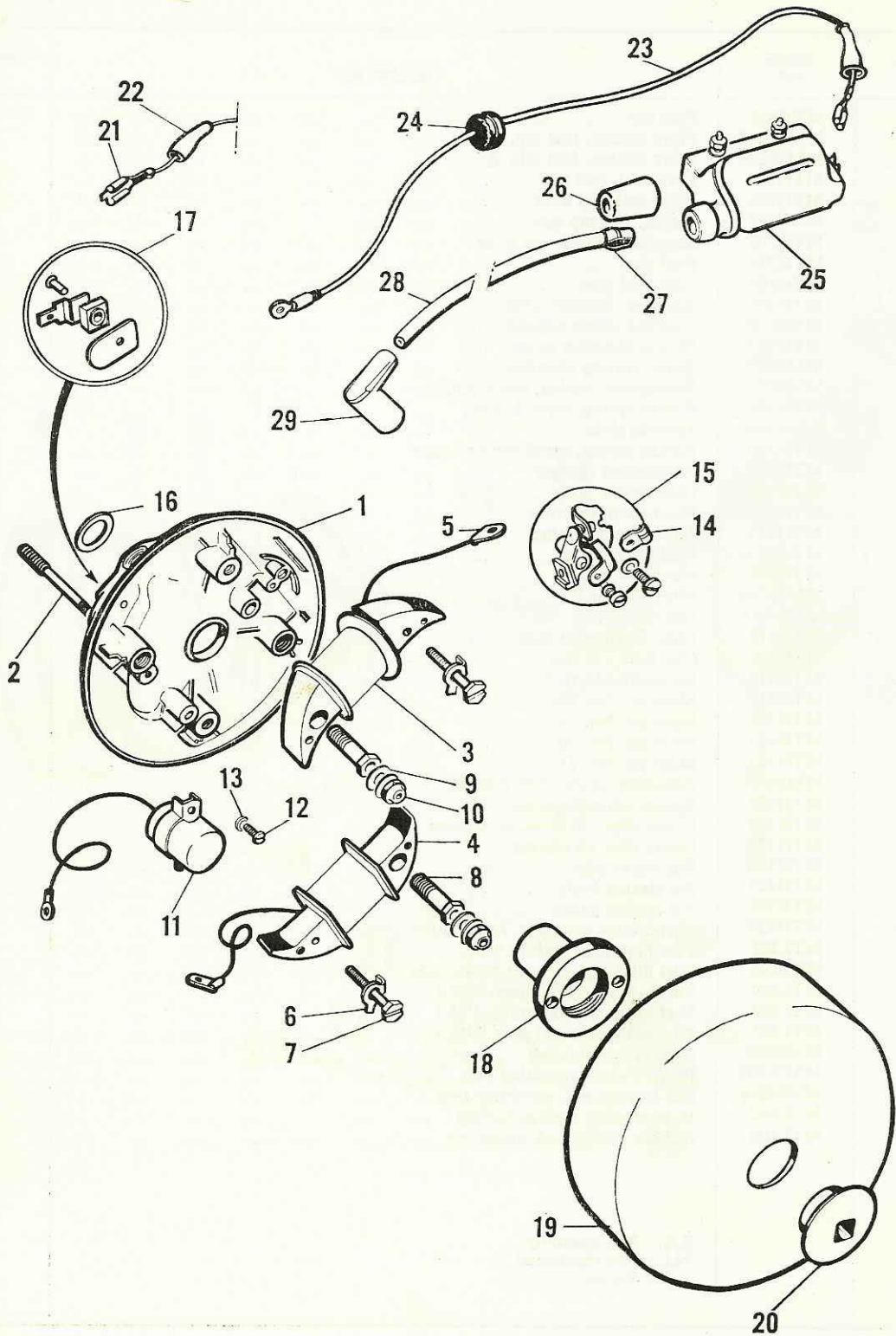


FUEL SYSTEM GROUP 'C'

| ILLUS. NO. | SALES NO. | DESCRIPTION | NUMBER OFF |
|------------|-----------|---|------------|
| 1 | MTH217 | Fuel tap | 1 |
| 2 | MMW245 | Fibre washer, fuel tap, $\frac{1}{16}$ " | V |
| or 2 | MMW246 | Fibre washer, fuel tap, $\frac{3}{32}$ " | V |
| 3 | MTH195 | Cork seal, fuel tap | 1 |
| 4 | MTH196 | Fibre seal, tap lever | 1 |
| 5 | MTH197 | Spring, fuel tap seal | 1 |
| 6 | MTL270 | Screwed retainer, tap lever | 1 |
| 7 | MTH215 | Fuel pipe | 1 |
| N.I. | MTH105 | Clip, fuel pipe | 2 |
| 8 | MTH106 | Adjuster, throttle cable | 1 |
| 9 | MMN180 | Locknut, cable adjuster | 1 |
| 10 | MTH107 | Mixing chamber cover | 1 |
| 11 | MMB177 | Screw, mixing chamber cover | 1 |
| 12 | MMW247 | Shakeproof washer, cover screw... | 1 |
| 13 | MTH108 | Return spring, throttle slide | 1 |
| 14 | MTH109 | Throttle slide | 1 |
| 15 | MTH110 | Return spring, enrichment plunger | 1 |
| 16 | MTH111 | Enrichment plunger | 1 |
| 17 | MTH112 | Carburettor body | 1 |
| 18 | MTH113 | Float chamber cover | 1 |
| 19 | MTH114 | Joint, float chamber | 1 |
| 20 | MTH115 | Fuel filter gauze | 1 |
| 21 | MTH116 | Float | 1 |
| 22 | MMW248 | Fibre washer | 1 |
| 23 | MMN181 | Cap nut | 1 |
| 24 | MTH117 | Clip, carburettor stub | 1 |
| 25 | MMP142 | Clip bolt, c/w nut | 1 |
| 26 | MTH118 | Insulating sleeve | 1 |
| 27 | MTH119 | Main jet, No. 18 | 1 |
| or 27 | MTH120 | Main jet, No. 19 | 1 |
| or 27 | MTH121 | Main jet, No. 20 | 1 |
| or 27 | MTH122 | Main jet, No. 21 | 1 |
| 28 | MMB178 | Adjusting screw, slow running | 1 |
| 29 | MTH123 | Spring, adjusting screw | 1 |
| 30 | MTH124 | Lower clip, c/w rivet, air cleaner | 1 |
| 31 | MTH125 | Upper clip, air cleaner | 1 |
| 32 | MTH126 | Pin, upper clip | 1 |
| 33 | MTH127 | Air cleaner body | 1 |
| 34 | MTH128 | Air cleaner gauze | 1 |
| S.A. | MTH129 | Carburettor complete, less control cables | 1 |
| 35 | MTL101 | Fuel filler cap, push fit type | 1 |
| or 35 | MTL102 | Fuel filler cap, bayonet fitting type | 1 |
| 36 | MTL104 | Fuel tank, charcoal grey, RM.4 | 1 |
| or 36 | MTL294 | Fuel tank, royal carmine, PM.1 | 1 |
| or 36 | MTL321 | Fuel tank, charcoal grey, NM.1 | 1 |
| 37 | MMB203 | Bolt, tank mounting | 1 |
| 38 | MMW288 | Plain washer, mounting bolt | 2 |
| 39 | MMN219 | Self-locking nut, mounting bolt | 1 |
| 40 | MTL105 | Rubber strip, tank mounting | 1 |
| 41 | MTL106 | Rubber block, tank mounting | 1 |

S.A. = Sub assembly
N.I. = Not illustrated
V = Varies

FLYWHEEL MAGNETO GROUP 'D'

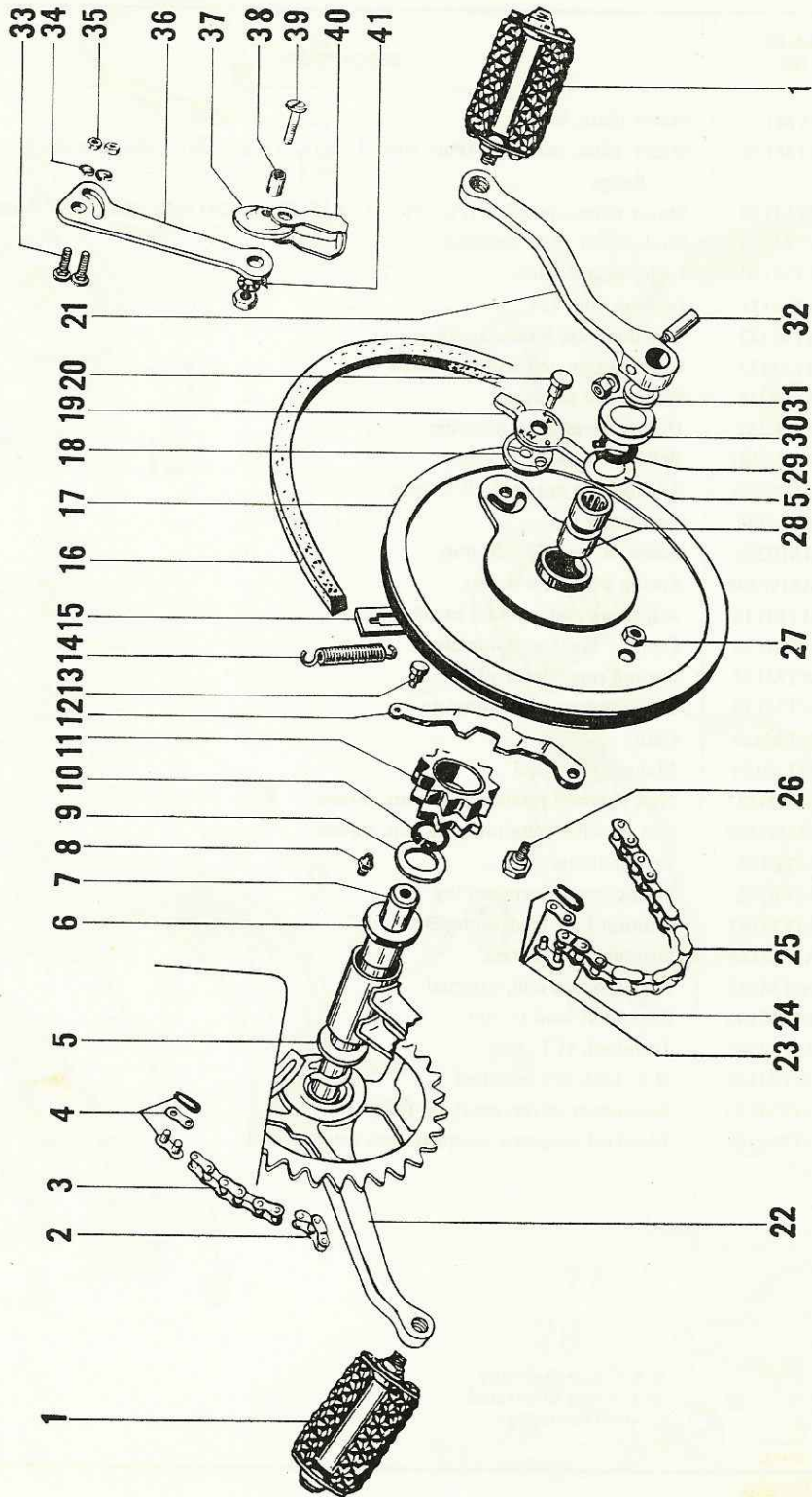


FLYWHEEL MAGNETO GROUP 'D'

| ILLUS. NO. | SALES NO. | DESCRIPTION | NUMBER OFF |
|------------|-----------|--|------------|
| 1 | MTM157 | Stator plate, bare | 1 |
| S.A. | MTM128 | Stator plate, complete (Part Nos. 1, 3-15, 23 and 24) without waterproof flange | 1 |
| or S.A. | MTM158 | Stator plate, complete (Part Nos. 1, 3-15, 23 and 24) with waterproof flange | 1 |
| 2 | MTM129 | Stud, stator plate securing | 2 |
| 3 | MTM130 | Lighting coil, blue... .. | 1 |
| 4 | MTM131 | Ignition coil, L.T. | 1 |
| 5 | MTM132 | Terminal tag, internal coils | 2 |
| 6 | MTM133 | Locking tab, coil securing screw | 2 |
| 7 | MMB236 | Screw, coil securing | 2 |
| 8 | MMB237 | Hollow screw, coil securing | 2 |
| 9 | MMW307 | Belleville washer, ϕ 5 mm. | 4 |
| 10 | MMN226 | Self-locking nut, ϕ 5 \times 0.75 mm. | 2 |
| 11 | MTM134 | Condenser | 1 |
| 12 | MMB238 | Screw, ϕ 4 \times 0.75 \times 10 mm. | 4 |
| 13 | MMW308 | Spring washer, ϕ 4 mm. | 4 |
| 14 | MTM135 | Adjusting clip, contact breaker | 1 |
| 15 | MTM136 | Contact breaker, complete | 1 |
| 16 | MTM137 | Sealing ring, stator plate | 1 |
| 17 | MTM138 | Lighting terminal, complete | 1 |
| 18 | MTM139 | Cam | 1 |
| 19 | MTM159 | Magneto flywheel | 1 |
| 20 | MMN227 | Nut, flywheel retaining, 11 mm. thread... .. | 1 |
| or 20 | MMN228 | Nut, flywheel retaining, 10 mm. thread... .. | 1 |
| 21 | MTP161 | Terminal tag | 2 |
| 22 | MTP162 | Plastic cover, terminal tag | 2 |
| 23 | MTM143 | Ignition L.T. lead, complete | 1 |
| 24 | MTM144 | Grommet, L.T. wire | 1 |
| 25 | MTM145 | H.T. ignition coil, external | 1 |
| 26 | MTM146 | Cap, H.T. lead to coil | 1 |
| 27 | MTM147 | Terminal, H.T. lead | 1 |
| 28 | MTM148 | H.T. lead, c/w terminal | 1 |
| 29 | MTM153 | Suppressor cover, sparking plug... .. | 1 |
| S.A. | MTM164 | Flywheel magneto complete, less external coil... .. | 1 |

S.A. = Sub assembly
N.I. = Not illustrated
 ϕ = Diameter

TRANSMISSION GROUP 'E'

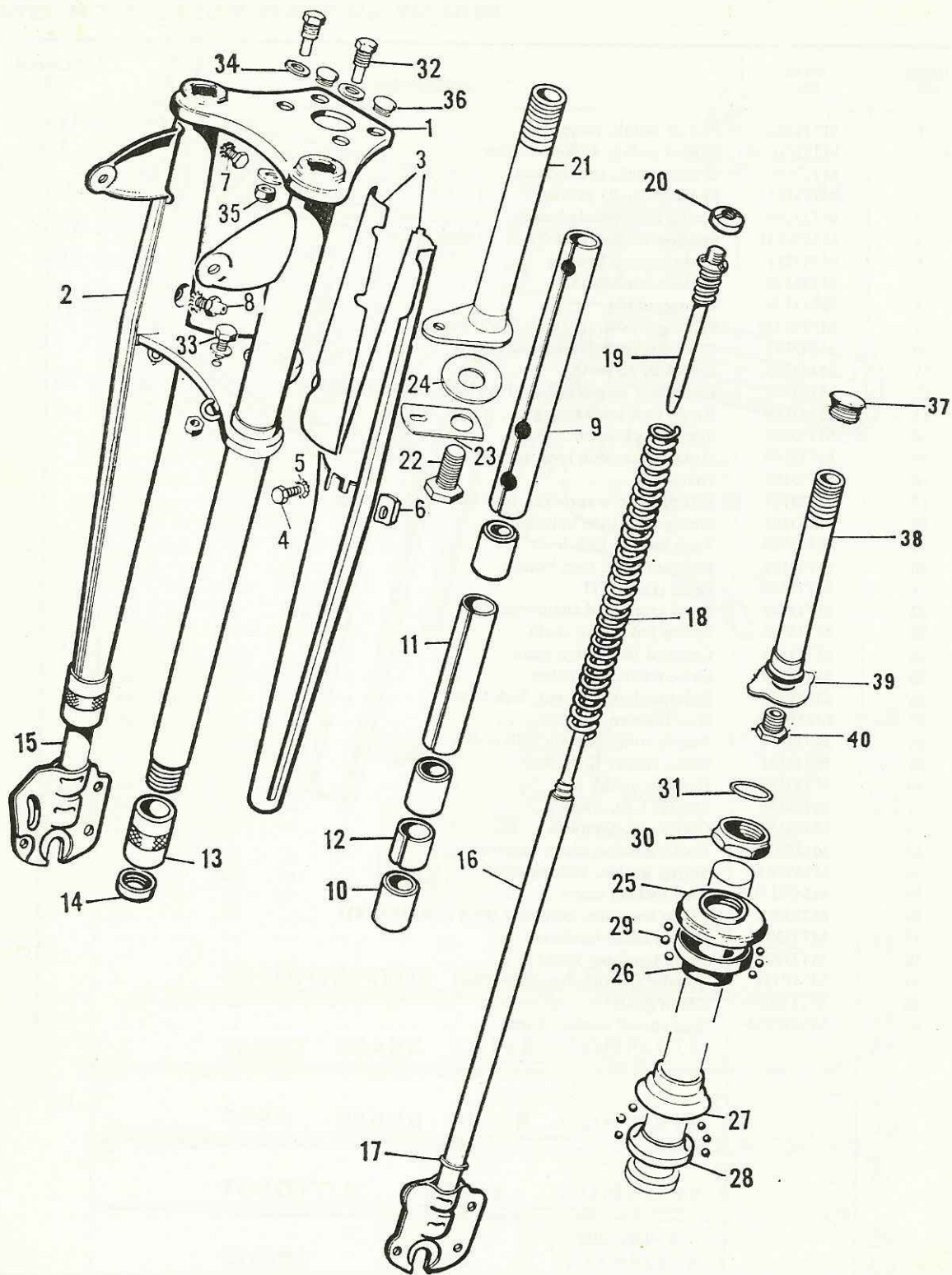


TRANSMISSION GROUP 'E'

| ILLUS. NO. | SALES NO. | DESCRIPTION | NUMBER OFF |
|---------------|--------------|--|---------------|
| 1 | MTD244 | Pair of pedals, plain | 1 pr. |
| or 1 | MTD210 | Pair of pedals, 4" solid rubber | 1 pr. |
| 2 | MTD199 | Cranked link, pedal chain | 1 |
| 3 | MTD197 | Pedal chain, 93 pitches | 1 |
| 4 | MTD198 | Spring link, pedal chain | 1 |
| 5 | MMW231 | Spacing washer, \varnothing 16.5 \times 27 \times 1 mm. | 2 |
| 6 | MTD211 | Bush, bottom bracket | 2 |
| 7 | MTD178 | Bottom bracket axle | 1 |
| 8 | MTD179 | Grease nipple | 1 |
| 9 | MMW232 | Spacing washer, \varnothing 16.5 \times 33 \times 0.8 mm. | 1 |
| 10 | MTD182 | Inner circlip, bottom bracket axle | 1 |
| 11 | MTD183 | Sprocket, 12 tooth | 1 |
| 12 | MTD243 | Lock lever assembly, c/w Part Nos. 13, 14, 15 and 26 | 1 |
| 13 | MTD190 | Rivet, lock lever spring | 1 |
| 14 | MTD188 | Spring, lock lever | 1 |
| 15 | MTD189 | Guide plate, lock lever spring | 1 |
| 16 | MTD193 | Drive belt | 1 |
| 17 | MTD187 | B/B pulley c/w sprocket, lock lever and bearings | 1 |
| 18 | MTD191 | Spring disc, turn button | 1 |
| 19 | MTD220 | Turn button, lock lever | 1 |
| 20 | MTD192 | Fulcrum rivet, turn button | 1 |
| 21 | MTD248 | Pedal crank L.H. | 1 |
| 22 | MTD249 | Pedal crank and chainwheel, 32T | 1 |
| 23 | MTD195 | Spring link, drive chain | 1 |
| 24 | MTD196 | Cranked link, drive chain | 1 |
| 25 | MTD194 | Drive chain, 96 pitches | 1 |
| 26 | MMP135 | Fulcrum bolt, c/w nut, lock lever | 1 |
| 27 | MMN276 | Nut, fulcrum bolt | 1 |
| 28 | MTD184 | Needle roller bearing, B/B pulley | 2 |
| 29 | MTD181 | Outer circlip, B/B axle | 2 |
| 30 | MTD185 | End cap, pulley hub | 1 |
| 31 | MTD186 | Spacer, L.H. crank | 1 |
| 32 | MTD177 | Cotter pin, complete | 2 |
| 33 | MMB171 | Locking screw, chain tensioner | 2 |
| 34 | MMW233 | Spring washer, locking screw | 2 |
| 35 | MMN171 | Nut, locking screw | 2 |
| 36 | MTD204 | Chain tensioner, complete (Part Nos. 33 to 41) | 1 |
| 37 | MTD201 | Wheel, chain tensioner | 1 |
| 38 | MTD203 | Bush, tensioner wheel | 1 |
| 39 | MMP132 | Spindle and nut, tensioner wheel | 1 |
| 40 | MTD202 | Chain guide | 1 |
| 41 | MMW234 | Shakeproof washer, 6 mm. | 1 |

\varnothing =Diameter

TELESCOPIC FORK & STEERING HEAD BEARINGS GROUP 'Fa'

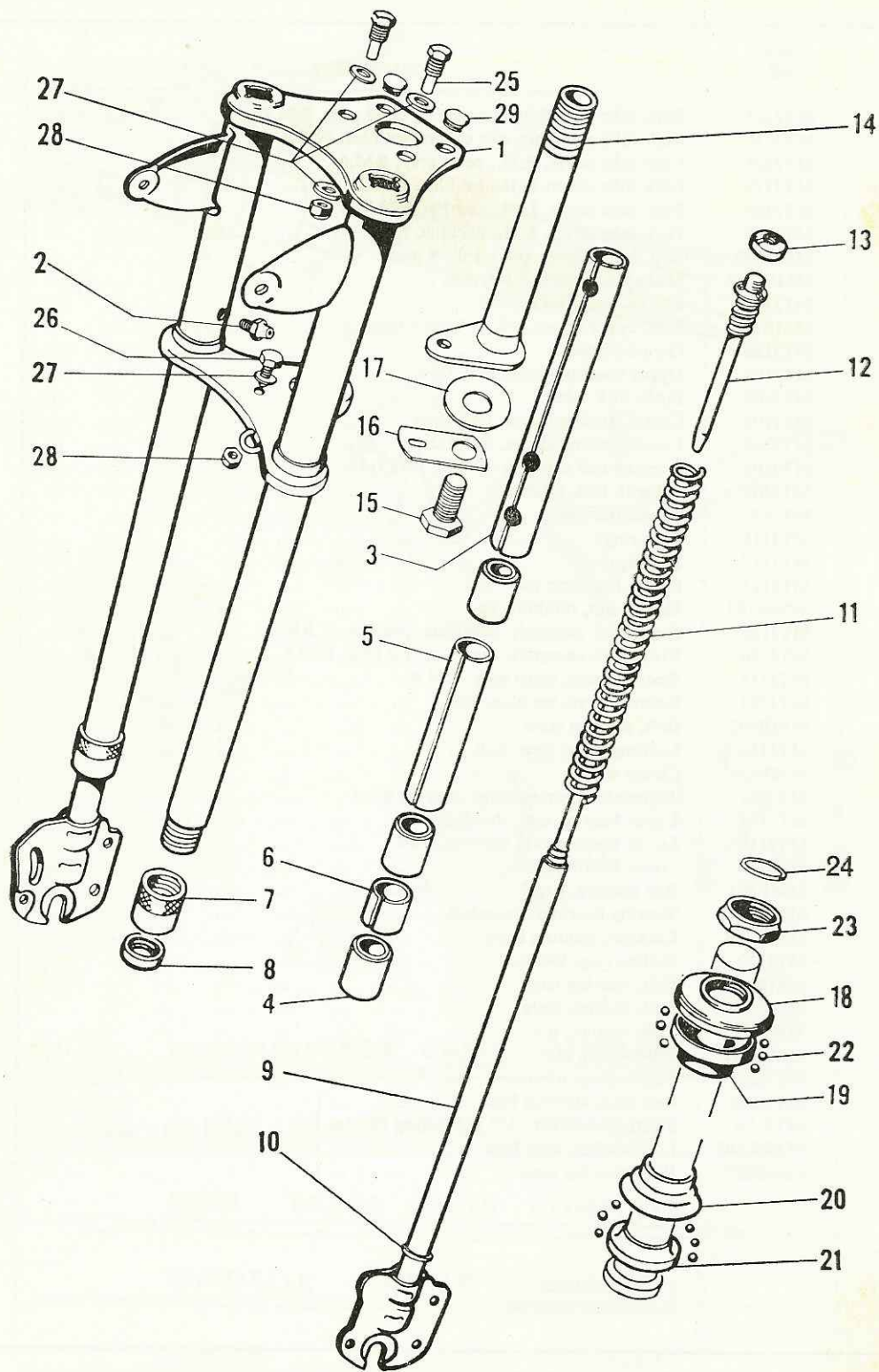


TELESCOPIC FORK & STEERING HEAD BEARINGS GROUP 'Fa'

| ILLUS. NO. | SALES NO. | DESCRIPTION | NUMBER OFF |
|------------|-----------|--|-----------------------------|
| 1 | MTJ124 | Fork tube assembly, c/w covers, pearl grey, RM.4 | 1 |
| or 1 | MTJ178 | Fork tube assembly, c/w covers, ice blue, NM.1 | 1 |
| 2 | MTJ125 | Fork tube cover, R.H., pearl grey, RM.4 | 1 |
| or 2 | MTJ179 | Fork tube cover, R.H., ice blue, NM.1... .. | 1 |
| 3 | MTJ126 | Fork tube cover, L.H., pearl grey, RM.4 | 1 |
| or 3 | MTJ180 | Fork tube cover, L.H., ice blue, NM.1 | 1 |
| 4 | MMB195 | Bolt, lower cover, $\phi 6 \times 1.0 \times 9$ mm. | 2 |
| 5 | MMW157 | Shakeproof washer, $\phi 6$ mm. | 6 |
| 6 | MTJ127 | Spacer, lower fork cover | 2 |
| 7 | MMB196 | Bolt, upper cover, $\phi 6 \times 1.0 \times 5.5$ mm. | 2 |
| 8 | MTJ128 | Grease nipple | 2 |
| 9 | MTJ103 | Upper spacing sleeve, fork tube | 2 |
| 10 | MTJ104 | Bush, fork tube | 6 |
| 11 | MTJ105 | Centre spacing sleeve, fork tube | 2 |
| 12 | MTJ106 | Lower spacing sleeve, fork tube | 2 |
| 13 | MTJ196 | Screwed end cap, c/w oil seal, fork tube | 2 |
| 14 | MTJ108 | Oil seal, fork tube | 2 |
| 15/16 | MTJ177 | Telescopic legs | 1 pr. |
| 17 | MTJ111 | Stop ring | 2 |
| 18 | MTJ112 | Fork spring | 2 |
| 19 | MTJ113 | Spring retaining rod | 2 |
| 20 | MMN187 | Slotted nut, retaining rod | 2 |
| S.A. | MTJ130 | Front fork assembly, complete, pearl grey, RM.4 | 1 |
| or S.A. | MTJ186 | Front fork assembly, complete, ice blue, NM.1 | 1 |
| 21 | MTJ115 | Steering stem, pearl grey, RM.4 | 1 |
| or 21 | MTJ193 | Steering stem, ice blue, NM.1 | 1 |
| 22 | MMB192 | Bolt, steering stem | 1 |
| 23 | MTJ116 | Locking plate, stem bolt | 1 |
| 24 | MMW265 | Clamp washer | 1 |
| 25 | MTJ117 | Adjustable bearing cone, steering head | 1 |
| 26 | MTJ118 | Upper bearing cup, steering head | 1 |
| 27 | MTJ119 | Lower bearing cup, steering head | 1 |
| 28 | MTJ120 | Lower bearing cone | 1 |
| 29 | MML101 | Ball bearing, $\phi \frac{5}{16}$ " | 50 |
| S.A. | MTJ121 | Steering bearings, complete | 1 |
| 30 | MMN188 | Locknut, steering head | 1 |
| 31 | MTJ122 | Sealing ring, locknut | 1 |
| 32 | MMB193 | Bolt, steering stop | 2 |
| 33 | MMB194 | Bolt, locking plate | 1 |
| 34 | MMW101 | Plain washer, $\phi \frac{1}{4}$ " | 5 |
| 35 | MMN189 | Self-locking nut | 3 |
| 36 | MTJ123 | Plastic plug, white... .. | 2 |
| 37 | MTN214 | End plug, steering head | } Early model RM.4 only ... |
| 38 | MTJ176 | Steering stem for "U" bolt fitting H/bars | |
| 39 | MMW340 | Lockwasher, stem bolt | |
| 40 | MMB287 | Bolt, steering stem | 1 |

ϕ = Diameter
S.A. = Sub assembly

TELESCOPIG FORK & STEERING HEAD BEARINGS GROUP 'Fb'

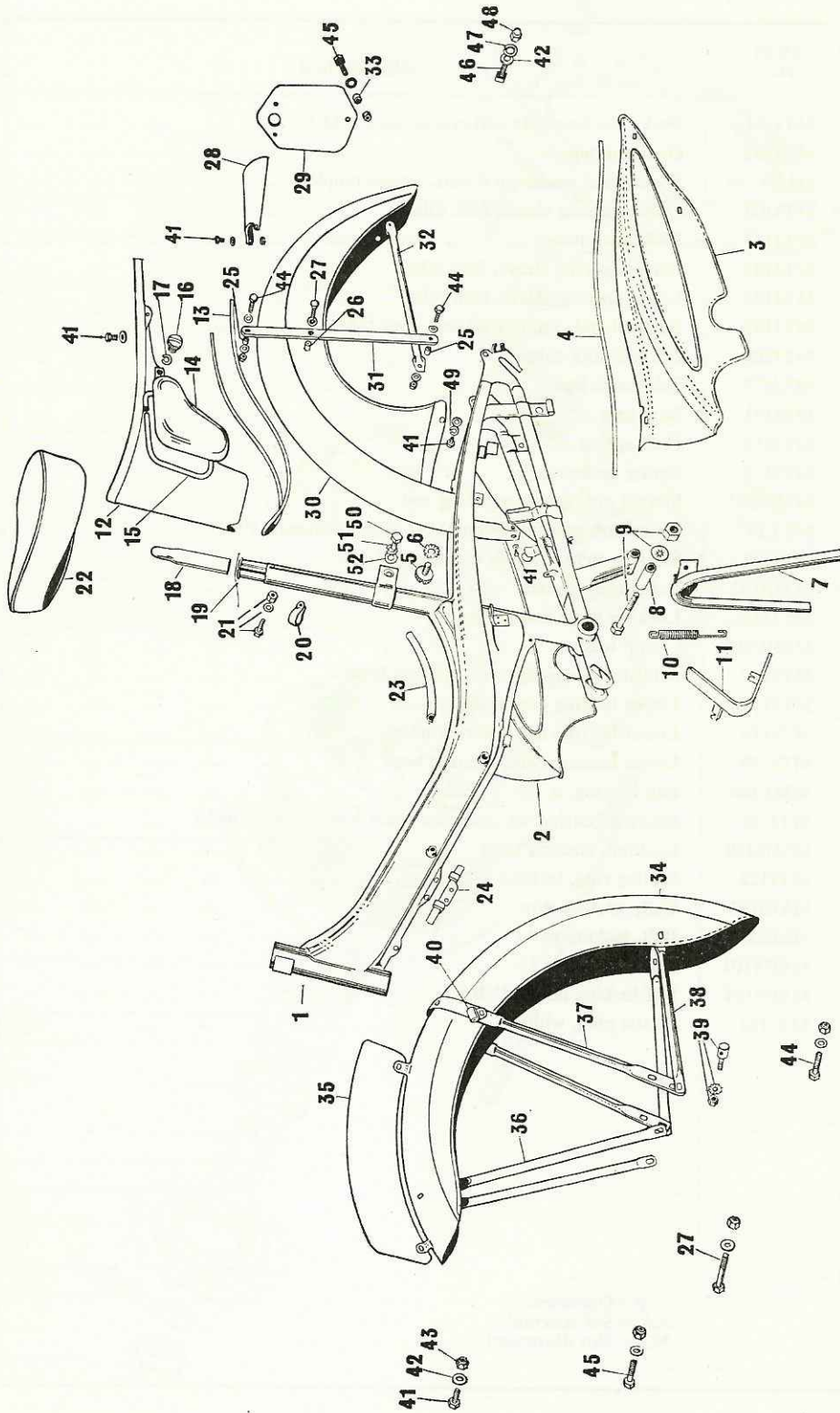


TELESCOPIC FORK & STEERING HEAD BEARINGS GROUP 'Fb'

| ILLUS. NO. | SALES NO. | DESCRIPTION | NUMBER OFF |
|------------|-----------|--|------------|
| 1 | MTJ101 | Fork tube assembly. Royal carmine PM.1 | 1 |
| 2 | MTJ102 | Grease nipple | 2 |
| N.I. | MMW234 | Shakeproof washer, ϕ 6 mm., grease nipple | 2 |
| 3 | MTJ103 | Upper spacing sleeve, fork tube | 2 |
| 4 | MTJ104 | Bush, fork tube | 6 |
| 5 | MTJ105 | Centre spacing sleeve, fork tube | 2 |
| 6 | MTJ106 | Lower spacing sleeve, fork tube | 2 |
| 7 | MTJ195 | Screwed end cap, c/w oil seal, fork tube | 2 |
| 8 | MTJ108 | Oil seal, fork tube | 2 |
| 9 | MTJ177 | Telescopic legs | 1 pr. |
| 10 | MTJ111 | Stop ring | 2 |
| 11 | MTJ112 | Fork spring | 2 |
| 12 | MTJ113 | Spring retaining rod | 2 |
| 13 | MMN187 | Slotted nut, spring retaining rod | 2 |
| S.A. | MTJ 187 | Front fork assembly, complete. Royal carmine PM.1 | 1 |
| 14 | MTJ192 | Steering stem. Royal carmine PM.1 | 1 |
| 15 | MMB192 | Bolt, steering stem | 1 |
| 16 | MTJ116 | Locking plate, stem bolt | 1 |
| 17 | MMW265 | Clamp washer | 1 |
| 18 | MTJ117 | Adjustable bearing cone, steering head | 1 |
| 19 | MTJ118 | Upper bearing cup, steering head | 1 |
| 20 | MTJ119 | Lower bearing cup, steering head | 1 |
| 21 | MTJ120 | Lower bearing cone, steering head | 1 |
| 22 | MML104 | Ball bearing, ϕ $\frac{5}{32}$ " | 50 |
| S.A. | MTJ121 | Steering bearing set, complete (Part Nos. 18 to 24 incl.) | 1 |
| 23 | MMN188 | Locknut, steering head | 1 |
| 24 | MTJ122 | Sealing ring, locknut | 1 |
| 25 | MMB193 | Bolt, steering stop | 2 |
| 26 | MMB194 | Bolt, locking plate | 1 |
| 27 | MMW101 | Plain washer, ϕ $\frac{1}{4}$ " | 5 |
| 28 | MMN189 | Self-locking nut, ϕ $\frac{1}{4}$ " B.S.F. | 3 |
| 29 | MTJ123 | Plastic plug, white... .. | 2 |

ϕ = Diameter
 S.A. = Sub assembly
 N.I. = Not illustrated

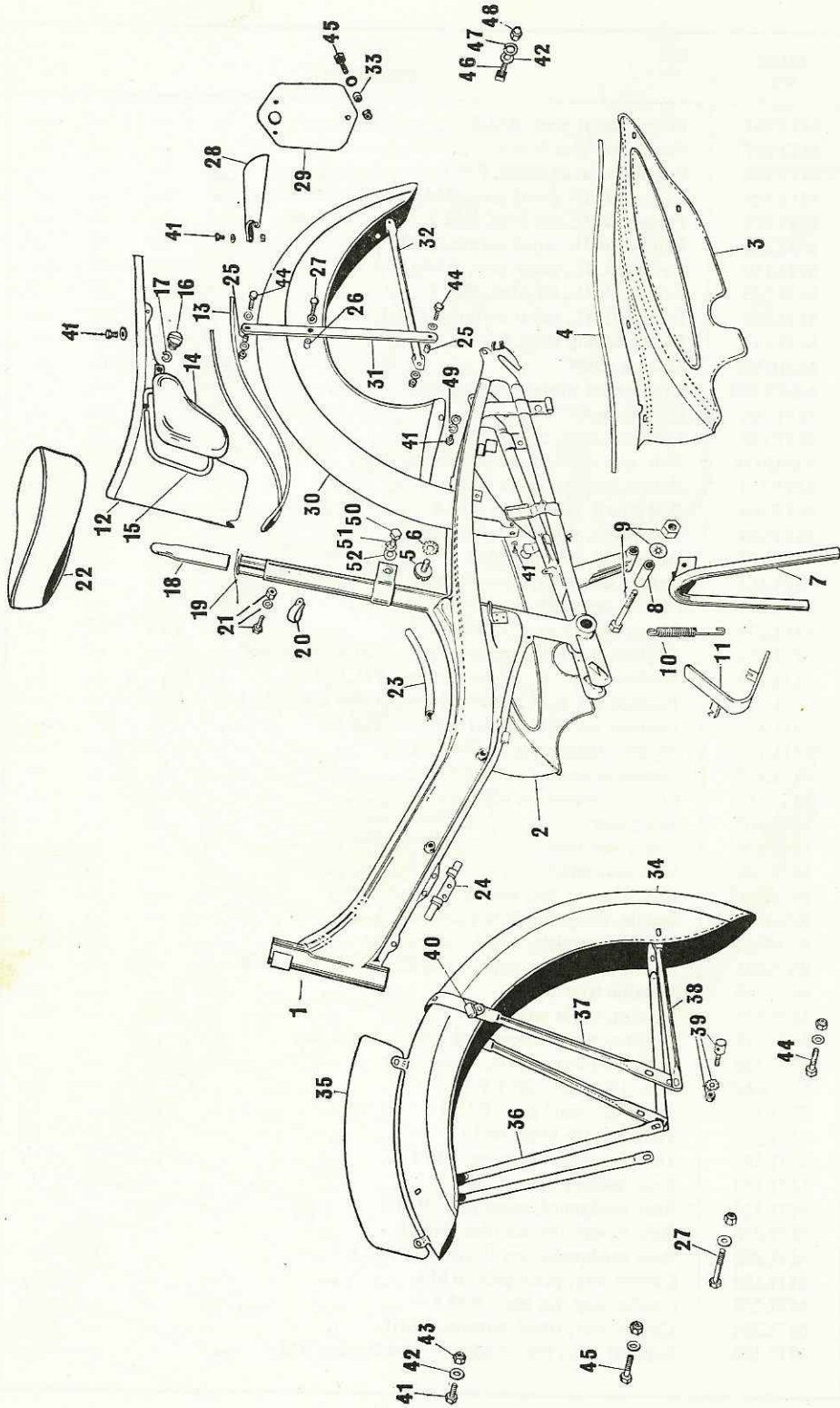
FRAME GROUP 'G'



FRAME GROUP 'G'

| ILLUS. NO. | SALES NO. | DESCRIPTION | NUMBER OFF |
|---------------|--------------|---|---------------|
| 1 | MTF101 | Frame, pearl grey, RM.4 | 1 |
| or 1 | MTF167 | Frame, ice blue NM.1 | 1 |
| or 1 | MTF168 | Frame, royal carmine, PM.1 | 1 |
| 2 | MTL109 | Fairing, R.H. pearl grey, RM.4 | 1 |
| or 2 | MTL279 | Fairing, R.H., ice blue, NM.1 | 1 |
| or 2 | MTL285 | Fairing, R.H., royal carmine PM.1 | 1 |
| 3 | MTL110 | Fairing, L.H., pearl grey, RM.4 | 1 |
| or 3 | MTL280 | Fairing, L.H., ice blue, NM.1 | 1 |
| or 3 | MTL286 | Fairing, L.H., royal carmine, PM.1 | 1 |
| 4 | MTL111 | Plastic edging strip, fairing | 2 |
| 5 | MMB336 | Fairing screw | 8 |
| 6 | MMW289 | Shakeproof washer, fairing screw | 8 |
| 7 | MTF164 | Centre stand | 1 |
| 8 | MTF103 | Distance piece, centre stand | 1 |
| 9 | MMP136 | Bolt, c/w nut and washer, centre stand | 1 |
| 10 | MTF123 | Return spring, centre stand | 1 |
| 11 | MTF104 | Belt guard, pearl grey, RM.4 | 1 |
| or 11 | MTF169 | Belt guard, royal carmine, PM.1 | 1 |
| or 11 | MTF172 | Belt guard, ice blue, NM.1 | 1 |
| 12 | MTL112 | Carrier assembly, charcoal grey, RM.4 and NM.1 | 1 |
| or 12 | MTL291 | Carrier assembly, royal carmine, PM.1 | 1 |
| 13 | MTL113 | Plastic edging strip, carrier | 1 |
| 14 | MTL114 | Toolbox lid, L.H., charcoal grey, RM.4 and NM.1 | 1 |
| or 14 | MTL292 | Toolbox lid, L.H., royal carmine, PM.1 | 1 |
| N.I. | MTL115 | Toolbox lid, R.H., charcoal grey, RM.4 and NM.1 | 1 |
| or N.I. | MTL293 | Toolbox lid, R.H., royal carmine, PM.1 | 1 |
| 15 | MTL116 | Plastic edging strip, toolbox lid | 2 |
| 16 | MTL117 | Fastening screw, toolbox lid | 2 |
| 17 | MTL118 | Circlip, toolbox lid screw | 2 |
| 18 | MTF105 | Seat pillar | 1 |
| 19 | MTF106 | Liner, seat tube | 1 |
| 20 | MTF107 | Clip, seat pillar | 1 |
| 21 | MMP137 | Bolt, c/w nut and washer, seat pillar clip | 1 |
| 22 | BZM851 | Saddle, complete, RM.4 and NM.1 | 1 |
| or 22 | BZM852 | Saddle, complete, white, (all models) | 1 |
| N.I. | BYA440 | Saddle cover, c/w clips. For BZM 852 saddle | 1 |
| 23 | MTF110 | Metallic trim strip... | 1 |
| 24 | MTF111 | Bracket, cable retaining | 1 |
| 25 | MTL119 | Distance piece, upper and lower, carrier stay | 4 |
| 26 | MTL120 | Distance piece, centre, carrier stay | 2 |
| 27 | MMB205 | Bolt, 1 $\frac{3}{8}$ " \times $\frac{9}{16}$ " \times 28 T.P.1 | 2 |
| 28 | MTL121 | Tailpiece, pearl grey, RM.4 | 1 |
| or 28 | MTL275 | Tailpiece, ice blue, NM.1 | 1 |
| or 28 | MTL281 | Tailpiece, royal carmine, PM.1 | 1 |
| 29 | MTL123 | Rear number plate | 1 |
| 30 | MTL124 | Rear mudguard, pearl grey, RM.4 | 1 |
| or 30 | MTL276 | Rear mudguard, ice blue, NM.1 | 1 |
| or 30 | MTL282 | Rear mudguard, royal carmine, PM.1 | 1 |
| 31 | MTL125 | Carrier stay, pearl grey, RM.4 | 2 |
| or 31 | MTL278 | Carrier stay, ice blue, NM.1 | 2 |
| or 31 | MTL284 | Carrier stay, royal carmine, PM.1 | 2 |
| 32 | MTL126 | Support stay, rear mudguard, pearl grey, RM.4 | 2 |

FRAME GROUP 'G'

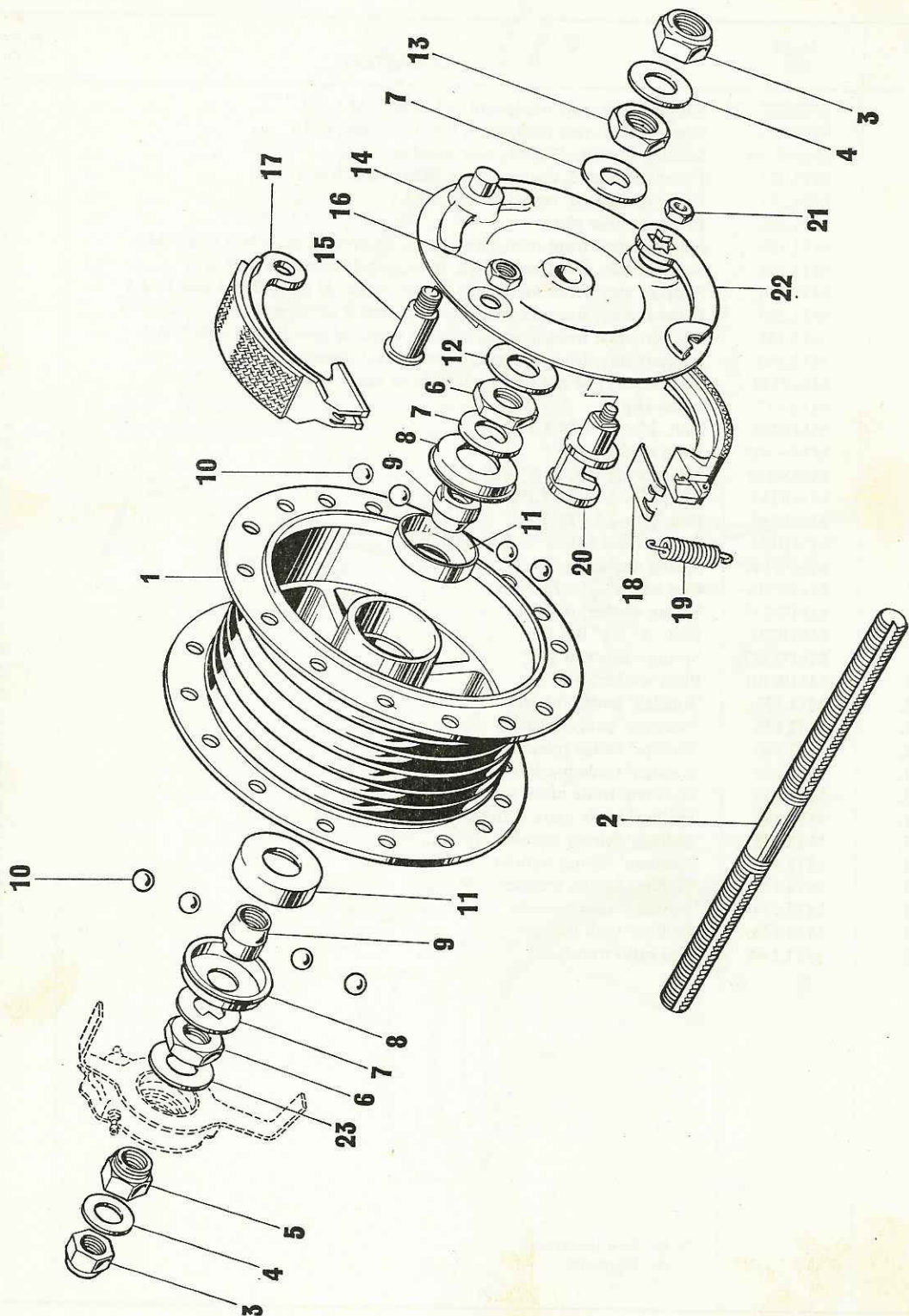


FRAME GROUP 'G'

| ILLUS. NO. | SALES NO. | DESCRIPTION | NUMBER OFF |
|------------|-----------|---|------------|
| or 32 | MTL277 | Support stay, rear mudguard, ice blue, NM.1 | 2 |
| or 32 | MTL283 | Support stay, rear mudguard, royal carmine, PM.1 | 2 |
| 33 | MMW139 | Spacing washer, $\frac{3}{8}$ " thick, rear number plate | 1 |
| 34 | MTL127 | Front mudguard, charcoal grey, RM.4 and NM.1 | 1 |
| or 34 | MTL287 | Front mudguard, royal carmine, PM.1 | 1 |
| 35 | MTL128 | Front number plate | 1 |
| 36 | MTL129 | Support stay, front mudguard, front, charcoal grey, RM.4 and NM.1 ... | 1 |
| or 36 | MTL288 | Support stay, front mudguard, front, royal carmine, PM.1 | 1 |
| 37 | MTL130 | Support stay, front mudguard, centre, charcoal grey, RM.4 and NM.1 ... | 1 |
| or 37 | MTL289 | Support stay, front mudguard, centre, royal carmine, PM.1 | 1 |
| 38 | MTL131 | Support stay, front mudguard, rear, charcoal grey, RM.4 and NM.1 ... | 1 |
| or 38 | MTL290 | Support stay, front mudguard, rear, royal carmine, PM.1 | 1 |
| 39 | MMP149 | Stop screw, c/w nut and washer, front brake outer cable | 1 |
| 40 | MTL132 | Cable clip | 2 |
| 41 | MMB206 | Bolt, $\frac{1}{2}$ " \times $\frac{3}{16}$ " \times 28 T.P.I. | 22 |
| 42 | MMW105 | Plain washer, ϕ $\frac{7}{16}$ " | 65 |
| 43 | MMN219 | Self locking nut, ϕ $\frac{3}{16}$ " \times 28 T.P.I. | 30 |
| 44 | MMB117 | Bolt, $\frac{7}{8}$ " \times $\frac{3}{16}$ " \times 28 T.P.I. | 2 |
| 45 | MMB140 | Bolt, $\frac{3}{4}$ " \times $\frac{3}{16}$ " \times 28 T.P.I. | 6 |
| 46 | MMB124 | Square head bolt, $\frac{3}{8}$ " \times $\frac{7}{32}$ " \times 28 T.P.I. | 2 |
| 47 | MMW144 | Spring washer, ϕ $\frac{7}{32}$ " | 2 |
| 48 | MMN218 | Cap nut, ϕ $\frac{7}{32}$ " \times 28 T.P.I. | 2 |
| 49 | MMW233 | Spring washer, ϕ $\frac{3}{16}$ " | 2 |
| 50 | MMB275 | Bolt, $\frac{9}{16}$ " \times $\frac{1}{4}$ " B.S.F. | 2 |
| 51 | MMW337 | Spring washer, ϕ $\frac{1}{4}$ " | 2 |
| 52 | MMW101 | Plain washer, ϕ $\frac{1}{4}$ " | 2 |
| N.I. | MTL133 | 'Raleigh' badge (plastic) | 2 |
| N.I. | MTL136 | 'Norman' badge (plastic) | 2 |
| N.I. | MTL140 | 'Phillips' badge (plastic) | 2 |
| N.I. | MTL185 | 'Raleigh' trade mark transfer | 1 |
| N.I. | MTL137 | 'Norman' trade mark transfer | 1 |
| N.I. | MTL141 | 'Phillips' trade mark transfer | 1 |
| N.I. | MTL135 | 'Raleigh' fairing transfer | 2 |
| N.I. | MTL138 | 'Norman' fairing transfer | 2 |
| N.I. | MTL142 | 'Phillips' fairing transfer | 2 |
| N.I. | MTL139 | 'Norman' tank transfer | 1 |
| N.I. | MTL143 | 'Phillips' tank transfer | 1 |
| N.I. | MTL144 | Fuel ratio transfer... .. | 1 |

N.I. = Not illustrated
 ϕ = Diameter

FRONT WHEEL GROUP 'H'

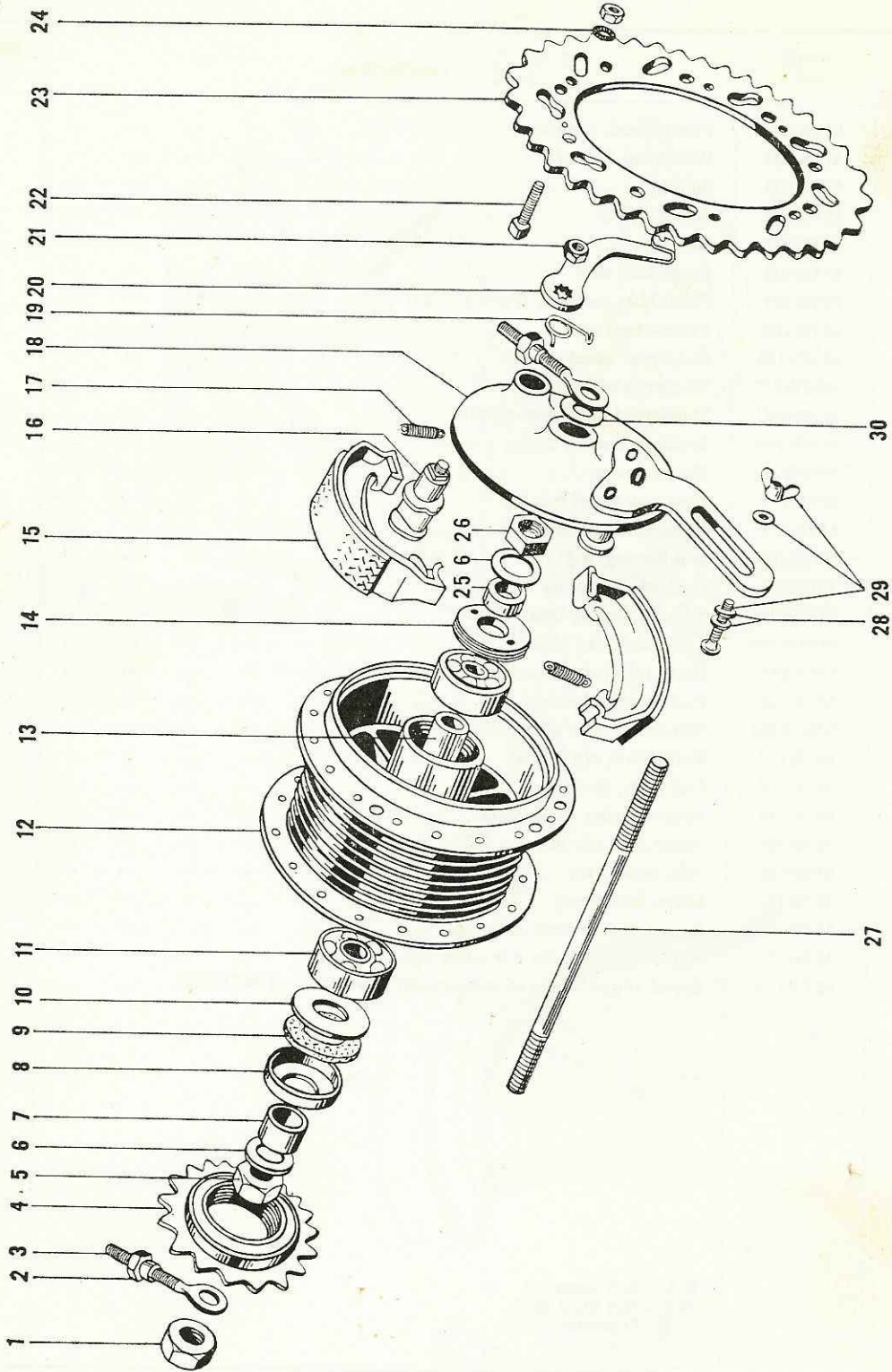


FRONT WHEEL GROUP 'H'

| ILLUS. NO. | SALES NO. | DESCRIPTION | NUMBER OFF |
|------------|-----------|---|------------|
| S.A. | MTK101 | Front wheel, complete | 1 |
| N.I. | MTK102 | Wheel rim, 23" x 2" | 1 |
| N.I. | MTK103 | Spoke | 36 |
| N.I. | MTK104 | Spoke nipple | 36 |
| N.I. | MTK107 | Rim tape | 1 |
| 1 | MTK108 | Front hub, shell | 1 |
| S.A. | MTK109 | Front hub, complete (Parts 1 to 23) | 1 |
| 2 | MTK110 | Front wheel spindle | 1 |
| 3 | MMN196 | Nut, front wheel spindle | 2 |
| 4 | MMW272 | Washer, wheel spindle | 2 |
| 5 | MMN197 | Shouldered nut, wheel spindle | 1 |
| 6 | MMN198 | Locknut, bearing cone | 2 |
| 7 | MMW273 | Keyed washer | 3 |
| 8 | MTK111 | Dust cap, wheel bearing | 2 |
| 9 | MTK112 | Cone, wheel bearing | 2 |
| 10 | MML103 | Ball bearing, $\phi \frac{1}{4}$ " | 20 |
| 11 | MTK113 | Cup, wheel bearing | 2 |
| 12 | MMW274 | Spacing washer, brake plate | 1 |
| 13 | MMN199 | Locknut, brake plate | 1 |
| 14 | MTK115 | Brake plate, complete (Parts 14 to 22) | 1 |
| 15 | MTK116 | Pivot pin, brake shoe | 1 |
| 16 | MMN200 | Nut, brake shoe pivot pin | 1 |
| 17 | MTK117 | Brake shoe, c/w lining | 1 pr. |
| 18 | MTK118 | End plate, brake shoe | 2 |
| 19 | MTK119 | Return spring, brake shoe | 2 |
| 20 | MTK120 | Brake cam, c/w nut | 1 |
| 21 | MMN201 | Nut, brake cam | 1 |
| 22 | MTK121 | Lever, brake cam | 1 |
| 23 | MTK122 | Spacer, speedometer drive unit | 1 |
| S.A. | MTK123 | Front wheel spindle, c/w cones and locknuts | 1 |
| N.I. | MTK124 | Spacer (fitted in lieu of speedometer drive unit and MTK122) | 1 |

S.A. = Sub assembly
 N.I. = Not illustrated
 ϕ = Diameter

REAR WHEEL GROUP 'I'



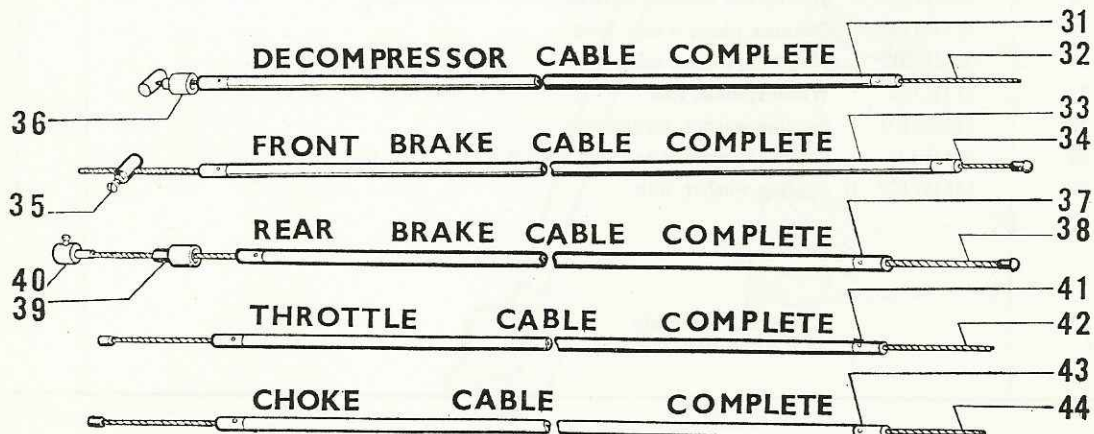
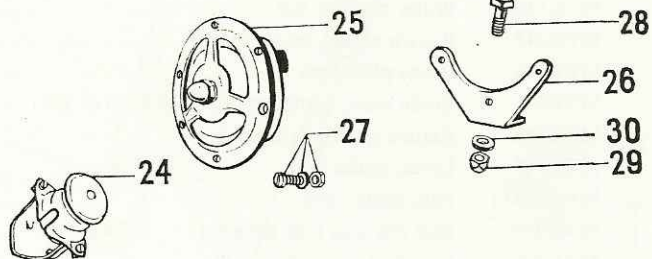
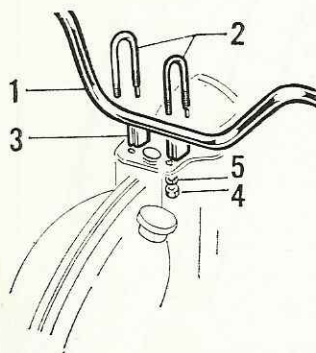
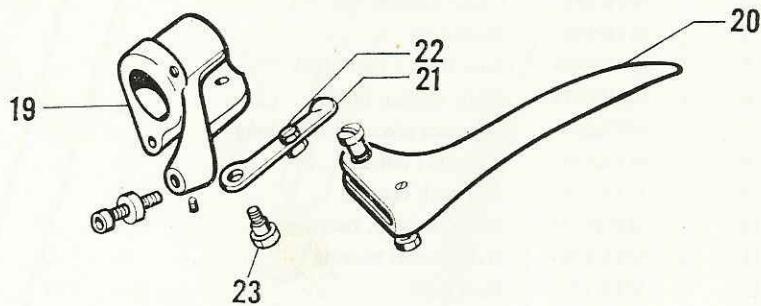
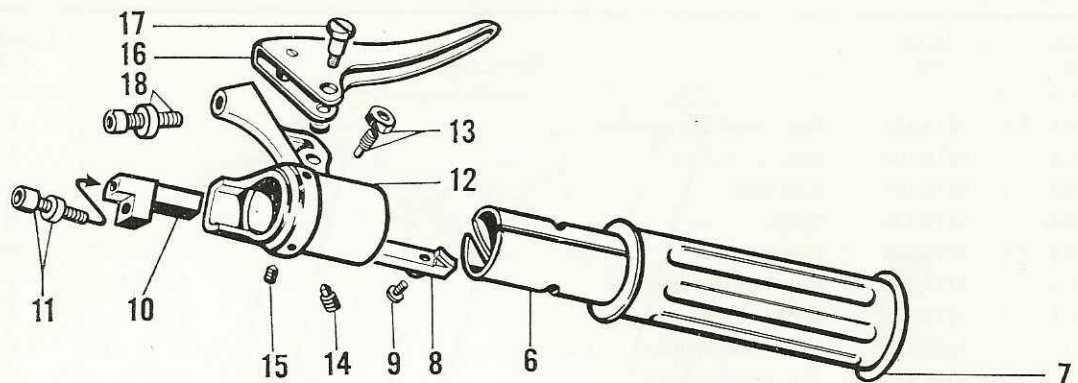
REAR WHEEL GROUP '1'

| ILLUS. NO. | SALES NO. | DESCRIPTION | NUMBER OFF |
|---------------|--------------|--|---------------|
| N.I. | MTK125 | Rear wheel c/w sprocket | 1 |
| N.I. | MTK102 | Rim, 23" x 2" | 1 |
| N.I. | MTK107 | Rim tape | 1 |
| N.I. | MTK126 | Spoke | 36 |
| N.I. | MTK104 | Nipple | 36 |
| S.A. | MTK128 | Rear hub c/w sprocket | 1 |
| S.A. | MTK129 | Rear hub less sprocket | 1 |
| 1 | MMN202 | Nut, wheel spindle | 2 |
| 2 | MMN203 | Nut, chain adjuster | 2 |
| 3 | MTK131 | Chain adjuster c/w nut | 2 |
| 4 | MTK132 | Freewheel | 1 |
| 5 | MMN204 | Nut, hub, 8 mm. thick | 1 |
| 6 | MMW275 | Plain washer, hub | 2 |
| 7 | MTK133 | Distance piece, 11 mm. long | 1 |
| 8 | MTK134 | Retainer, felt seal | 1 |
| 9 | MTK135 | Felt seal, bearing | 1 |
| 10 | MMW276 | Shield washer, bearing | 1 |
| 11 | MTK136 | Ball journal bearing | 2 |
| 12 | MTK127 | Hub shell | 1 |
| 13 | MTK137 | Distance piece, bearings | 1 |
| 14 | MTK138 | Screwed bearing retainer | 1 |
| 15 | MTK144 | Brake shoe c/w lining | 1 pr. |
| 16 | MTK146 | Brake cam c/w nut | 1 |
| 17 | MTK145 | Return spring, brake shoe | 2 |
| 18 | MTK140 | Brake plate bare | 1 |
| S.A. | MTK141 | Brake plate, complete (Parts Nos. 15 to 20) | 1 |
| 19 | MTK186 | Return spring, cam lever | 1 |
| 20 | MTK147 | Lever, brake cam | 1 |
| 21 | MMN200 | Nut, brake cam | 1 |
| 22 | MMP146 | Bolt c/w nut, rear sprocket | 6 |
| 23 | MTK148 | Sprocket, rear wheel, 44T | 1 |
| 24 | MMW266 | Shakeproof washer, sprocket bolt | 6 |
| 25 | MTK139 | Distance piece, 6 mm. long | 1 |
| 26 | MMN205 | Nut, hub, 5 mm. thick | 1 |
| 27 | MTK130 | Wheel spindle, rear | 1 |
| 28 | MMW101 | Spacing washer, torque arm | 2 |
| 29 | MMP145 | Screw c/w washer and nut, torque arm | 1 |
| 30 | MMW129 | Spacing washer, hub | 1 |

S.A. = Sub assembly
N.I. = Not illustrated

HANDLEBARS, CONTROL CABLES & ELECTRIC HORN GROUP 'Ja'

EARLY MODELS UP TO FRAME No. RM/H1311



HANDLEBARS, CONTROL CABLES & ELECTRIC HORN GROUP 'Ja'

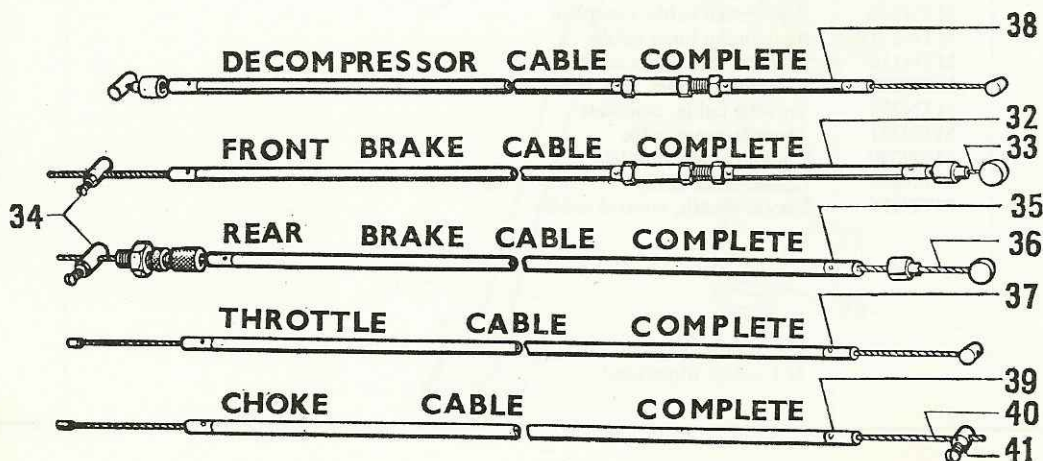
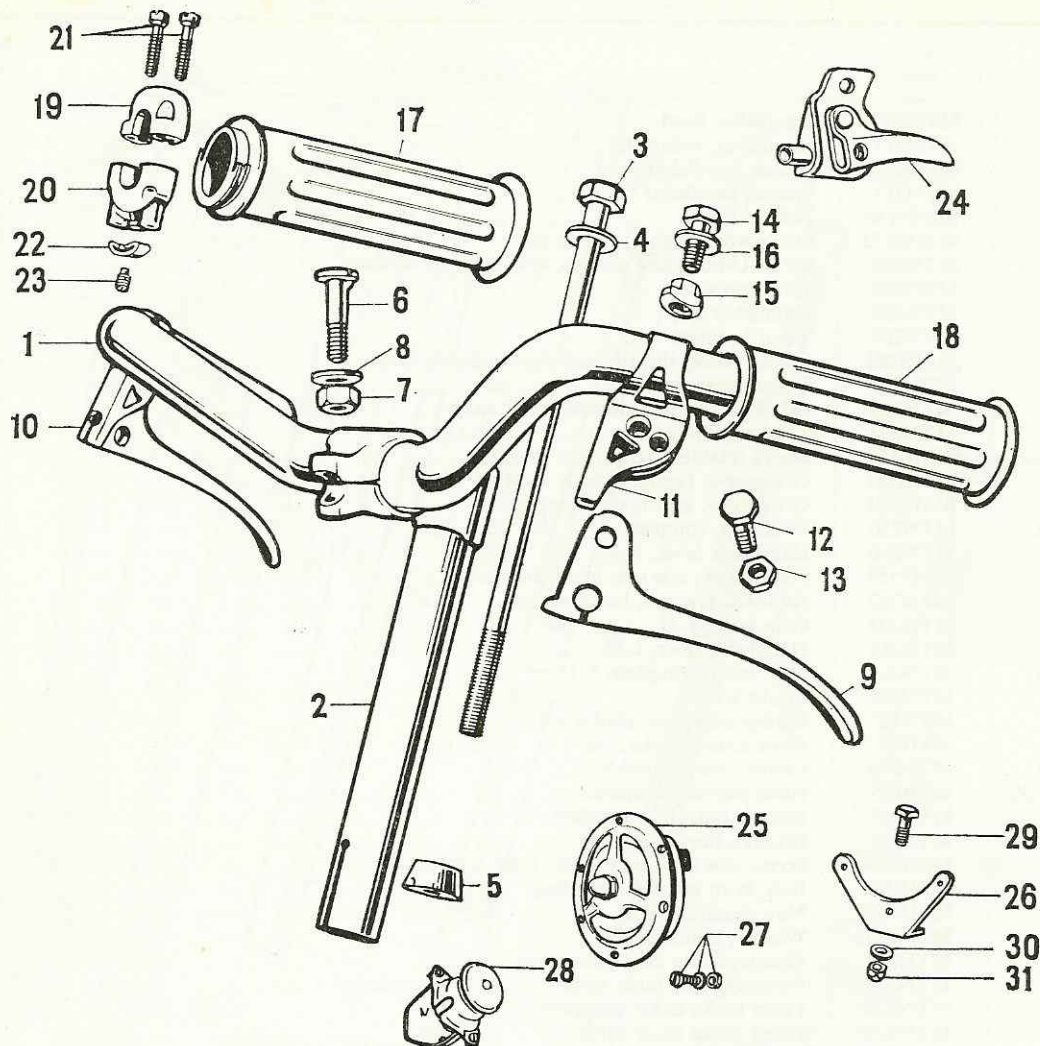
EARLY MODELS UP TO FRAME No. RM/H1311

| ILLUS. NO. | SALES NO. | DESCRIPTION | NUMBER OFF |
|------------|-----------|---|------------|
| 1 | MTN200 | Handlebar bend | 1 |
| S.A. | MTN217 | Handlebar, complete | 1 |
| 2 | MMB286 | U-bolt, handlebar bend | 2 |
| 3 | MTN213 | Spacer, handlebar bend | 2 |
| 4 | MMN148 | Nut, U-bolt | 4 |
| 5 | MMW172 | Shakeproof washer, U-bolt nut | 4 |
| S.A. | MTN218 | Set of U-bolts and spacers, c/w nuts and washers | 1 |
| 6 | MTN204 | Twistgrip sleeve | 1 |
| 7 | MTN206 | Handlebar grip | 2 |
| 8 | MTN207 | Throttle cursor | 1 |
| 9 | MMB282 | Clamp screw, throttle and decompressor cables | 2 |
| 10 | MTN208 | Decompressor cursor | 1 |
| 11 | MTN209 | Adjuster, c/w nut, decompressor cable | 1 |
| 12 | MTN202 | Twistgrip body | 1 |
| 13 | MMP159 | Sleeve retaining screw, c/w locknut | 1 |
| 14 | MMB283 | Grubscrew, twistgrip body locating | 1 |
| 15 | MMB284 | Grubscrew, grip body securing | 1 |
| S.A. | MTN220 | Twistgrip, complete | 1 |
| 16 | MTN210 | Handlebar lever, R.H. | 1 |
| 17 | MMP158 | Pivot screw, c/w nut, handlebar lever | 2 |
| 18 | MTN212 | Adjuster, c/w nut, brake cables | 2 |
| 19 | MTN203 | Grip body, L.H. | 1 |
| 20 | MTN211 | Handlebar lever, L.H. | 1 |
| S.A. | MTN241 | Grip body, complete, L.H. | 1 |
| 21 | MTN205 | Choke lever | 1 |
| 22 | MTN225 | Clamp, complete, choke lever | 1 |
| 23 | MMB285 | Pivot screw, choke lever | 1 |
| S.A. | MTN219 | Choke lever, complete | 1 |
| 24 | MTP125 | Horn button, complete | 1 |
| 25 | MTP147 | Electric horn kit, complete | 1 |
| 26 | MTP124 | Bracket, horn mounting | 1 |
| 27 | MMP154 | Screw, c/w nut and washer, horn to bracket | 3 |
| 28 | MMB288 | Bolt, horn bracket mounting | 1 |
| 29 | MMN189 | Nut, mounting bolt | 1 |
| 30 | MMW101 | Washer, mounting bolt | 1 |
| 31 | MTN238 | Decompressor cable, complete | 1 |
| 32 | MTN222 | Decompressor inner cable | 1 |
| 33 | MTN234 | Front brake cable, complete | 1 |
| 34 | MTN223 | Front brake inner cable | 1 |
| 35 | MTN118 | Solderless nipple, front brake cable | 1 |
| 36 | MTN231 | Cable ferrule | 1 |
| 37 | MTN236 | Rear brake cable, complete | 1 |
| 38 | MTN224 | Rear brake inner cable | 1 |
| 39 | MTN136 | Ferrule, rear brake cable | 1 |
| 40 | MTN230 | Solderless nipple, rear brake cable | 1 |
| 41 | MTN239 | Throttle cable, complete | 1 |
| 42 | MTN221 | Throttle inner cable | 1 |
| 43 | MTN240 | Choke cable, complete | 1 |
| 44 | MTN232 | Choke inner cable | 1 |
| N.I. | MTN126 | Plastic sheath, control cables | 2 |

S.A. = Sub assembly (not illustrated)
N.I. = Not illustrated

HANDLEBARS, CONTROL CABLES & ELECTRIC HORN GROUP 'Jb'

LATER MODELS FROM FRAME No. RM/H1311



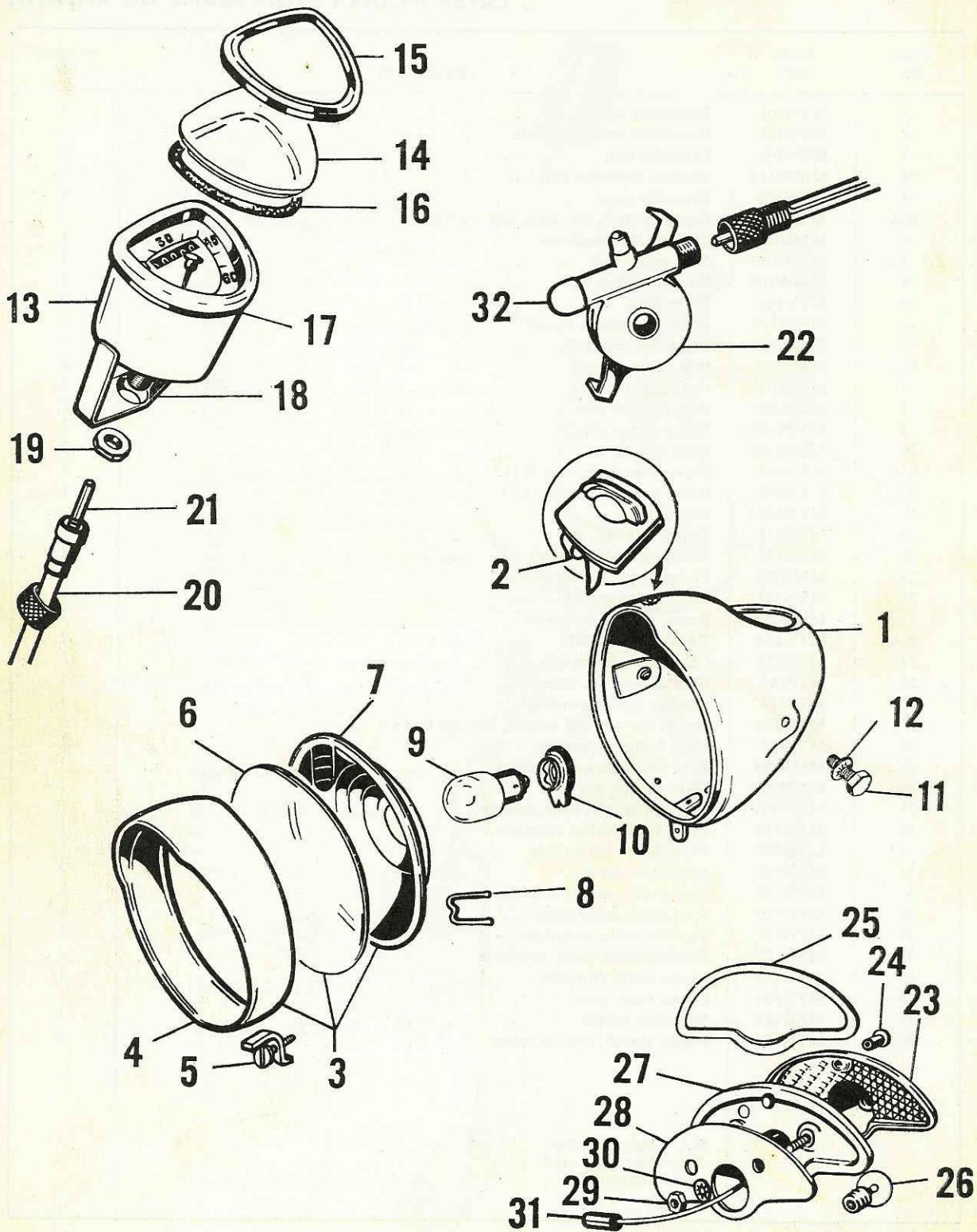
HANDLEBARS, CONTROL CABLES & ELECTRIC HORN GROUP 'Jb'

LATER MODELS FROM FRAME No. RM/H1311

| ILLUS. NO. | SALES NO. | DESCRIPTION | NUMBER OFF |
|------------|-----------|---|------------|
| 1 | MTN101 | Handlebar bend | 1 |
| 2 | MTN105 | Handlebar stem, complete | 1 |
| 3 | MTN103 | Expander bolt | 1 |
| 4 | MMW110 | Washer, expander bolt | 1 |
| 5 | MTN104 | Expander cone | 1 |
| S.A. | MTN256 | Expander bolt, c/w cone and washer | 1 |
| 6 | MMB108 | Clamp bolt, handlebar | 1 |
| 7 | MMN109 | Nut, clamp bolt | 1 |
| 8 | MMW109 | Washer, clamp bolt | 1 |
| 9 | MTN106 | Brake lever | 2 |
| 10 | MKM116 | Brake fulcrum, R.H. | 1 |
| 11 | MKM117 | Brake fulcrum, L.H. | 1 |
| 12 | MMB129 | Bolt, lever fulcrum | 2 |
| 13 | MMN104 | Nut, lever fulcrum | 2 |
| 14 | MMB129 | Bolt, fulcrum clip | 2 |
| 15 | MMN127 | Nut, fulcrum clip | 2 |
| 16 | MMW105 | Plain washer, $\phi \frac{3}{16}$ " | 2 |
| S.A. | MTN107 | Brake lever, complete, R.H. | 1 |
| S.A. | MTN108 | Brake lever, complete, L.H. | 1 |
| 18 | MTN245 | Plastic grips | 1 pr. |
| 19 | MTN111 | Twistgrip body, top | 1 |
| 20 | MTN112 | Twistgrip body, bottom | 1 |
| 21 | MMB273 | Fixing screw, twistgrip body | 2 |
| 22 | MTN113 | Friction spring | 1 |
| 23 | MMB257 | Screw, friction spring | 1 |
| S.A. | MTN114 | Twistgrip, complete | 1 |
| 24 | MTN115 | Choke lever, complete | 1 |
| 25 | MTP147 | Electric horn kit, complete | 1 |
| 26 | MTP124 | Bracket, horn mounting | 1 |
| 27 | MMP154 | Screw, c/w nut and washer, horn to bracket | 3 |
| 28 | MTP125 | Horn button, complete | 1 |
| 29 | MMB194 | Bolt, horn bracket mounting | 1 |
| 30 | MMW101 | Plain washer, $\phi \frac{1}{4}$ " | 1 |
| 31 | MMN189 | Self-locking nut, horn mounting | 1 |
| 32 | MTN116 | Front brake cable, complete | 1 |
| 33 | MTN117 | Front brake inner cable | 1 |
| 34 | MTN118 | Solderless nipple | 2 |
| 35 | MTN119 | Rear brake cable, complete | 1 |
| 36 | MTN120 | Rear brake inner cable | 1 |
| 37 | MTN121 | Throttle cable, complete | 1 |
| 38 | MTN122 | Decompressor cable, complete | 1 |
| 39 | MTN123 | Choke cable, complete | 1 |
| 40 | MTN124 | Choke inner cable | 1 |
| 41 | MTN125 | Solderless nipple | 1 |
| N.I. | MTN126 | Plastic sheath, control cables | 2 |

S.A. = Sub assembly
 N.I. = Not illustrated
 ϕ = Diameter

LIGHTING AND SPEEDOMETER RM.4 MODEL GROUP 'Ka'

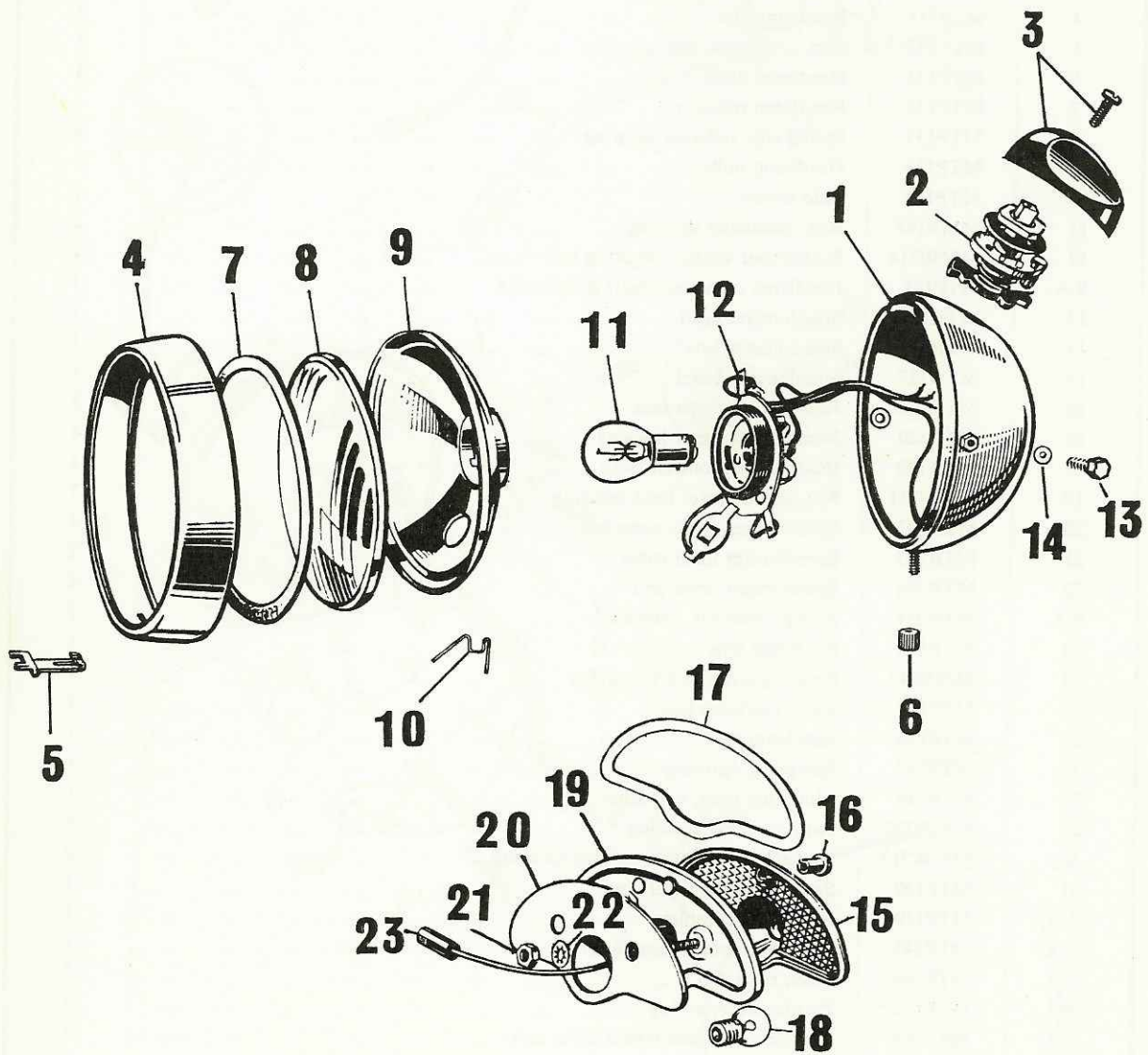


LIGHTING AND SPEEDOMETER RM.4 MODEL GROUP 'Ka'

| ILLUS. NO. | SALES NO. | DESCRIPTION | NUMBER OFF |
|------------|-----------|--------------------------------------|------------|
| 1 | MTP128 | Headlamp shell, pearl grey RM.4 | 1 |
| 2 | MTP129 | Lighting switch, complete | 1 |
| 3 | MTP130 | Optical assembly | 1 |
| 4 | MTP131 | Headlamp rim | 1 |
| 5 | MTP132 | Clip, c/w screw, rim securing | 1 |
| 6 | MTP133 | Headlamp glass | 1 |
| 7 | MTP134 | Headlamp reflector | 1 |
| 8 | MTP135 | Spring clip, reflector securing | 4 |
| 9 | MTP136 | Headlamp bulb | 1 |
| 10 | MTP137 | Bulb holder | 1 |
| 11 | MMB148 | Bolt, headlamp securing | 2 |
| 12 | MMW314 | Shakeproof washer, securing bolt | 2 |
| S.A. | MTP138 | Headlamp complete, pearl grey R.M.4 | 1 |
| 13 | MTR125 | Speedometer head | 1 |
| 14 | MTR126 | Speedometer lens | 1 |
| 15 | MTR127 | Speedometer bezel | 1 |
| 16 | MTR128 | Joint, speedometer lens | 1 |
| 17 | MTR129 | Joint, speedometer housing | 1 |
| 18 | MTR130 | Bracket, speedometer head | 1 |
| 19 | MMN231 | Nut, speedometer head securing... | 1 |
| 20 | MTR142 | Speedometer cable, complete | 1 |
| 21 | MTR143 | Speedometer inner cable | 1 |
| 22 | MTR144 | Speedometer drive unit | 1 |
| S.A. | MTR251 | Speedometer kit, complete | 1 |
| 23 | MTP114 | Rearlamp lens | 1 |
| 24 | MMB247 | Securing screw, rearlamp lens | 1 |
| 25 | MTP115 | Joint, rearlamp lens | 1 |
| 26 | MTP116 | Rearlamp bulb | 1 |
| 27 | MTP117 | Baseplate, rearlamp | 1 |
| 28 | MTP118 | Mounting joint, rearlamp | 1 |
| 29 | MMN233 | Nut, rearlamp securing | 2 |
| 30 | MMW313 | Shakeproof washer, rearlamp securing | 2 |
| 31 | MTP120 | Snap connector, rearlamp | 1 |
| S.A. | MTP119 | Rearlamp, complete | 1 |
| N.I. | MTP145 | Wire, magneto to headlamp | 1 |
| N.I. | MTP146 | Wire, rearlamp | 1 |
| N.I. | MTP122 | Plastic sleeve, wiring | 1 |
| N.I. | MTP144 | Sponge seal, speedometer drive unit | 1 |
| 32 | MTR135 | Plastic cap, speedometer drive unit | 1 |

S.A. = Sub assembly (not illustrated)
N.I. = Not illustrated

LIGHTING NM.1 & PM.1 MODELS GROUP 'Kb'



LIGHTING NM.1 & PM.1 MODELS GROUP 'Kb'

| ILLUS. NO. | SALES NO. | DESCRIPTION | NUMBER OFF |
|------------|-----------|--|------------|
| 1 | MTP198 | Headlamp shell. Ice blue, NM.1 | 1 |
| or 1 | MTP199 | Headlamp shell. Royal carmine, PM.1 | 1 |
| 2 | MTP102 | Lighting switch, complete | 1 |
| 3 | MTP103 | Switch knob and screw | 1 |
| S.A. | MTP104 | Switch plate and spindle | 1 |
| 4 | MTP105 | Headlamp rim | 1 |
| 5 | MTP106 | Clip, rim securing | 1 |
| 6 | MMN232 | Nut, rim securing | 1 |
| 7 | MTP107 | Rubber seal, reflector | 1 |
| 8 | MTP108 | Headlamp glass | 1 |
| 9 | MTP109 | Headlamp reflector | 1 |
| 10 | MTP110 | Spring clip, reflector securing | 3 |
| 11 | MTP111 | Headlamp bulb | 1 |
| 12 | MTP112 | Bulb holder | 1 |
| S.A. | MTP202 | Headlamp, c/w wiring harness. Ice blue, NM.1 | 1 |
| S.A. | MTP205 | Headlamp, c/w wiring harness. Royal carmine, PM.1 | 1 |
| 13 | MMB194 | Bolt, headlamp securing | 2 |
| 14 | MMW101 | Plain washer, $\varnothing \frac{1}{4}$ " | 2 |
| 15 | MTP114 | Rearlamp lens | 1 |
| 16 | MMB247 | Securing screw, rearlamp lens | 1 |
| 17 | MTP115 | Joint, rearlamp lens | 1 |
| 18 | MTP116 | Rearlamp bulb | 1 |
| 19 | MTP117 | Baseplate, rearlamp | 1 |
| 20 | MTP118 | Mounting joint, rearlamp | 1 |
| 21 | MMN233 | Nut, rearlamp securing | 2 |
| 22 | MMW313 | Shakeproof washer, rearlamp securing | 2 |
| S.A. | MTP119 | Rearlamp, complete | 1 |
| 23 | MTP120 | Snap connector | 1 |
| N.I. | MTP121 | Wiring harness | 1 |
| N.I. | MTP122 | Plastic sleeve, wiring harness | 1 |

S.A. = Sub assembly
N.I. = Not illustrated
 \varnothing = Diameter

TOOLKIT GROUP 'L'

| GROUP NO. | SALES NO. | DESCRIPTION | NUMBER OFF |
|-----------|-----------|---|------------|
| 1 | MTR101 | Inflator, complete | 1 |
| 2 | MTR102 | Inflator connection | 1 |
| 3 | MTR104 | Tool wallet | 1 |
| 4 | MTR105 | Spanner, $\frac{1}{8}'' \times \frac{3}{16}'' \times \frac{1}{4}''$ B.S.F. | 1 |
| 5 | MTR106 | Spanner, cylinder head nuts | 1 |
| 6 | MTR107 | Spanner, sparking plug | 1 |
| 7 | MTR108 | Spanner, 8 mm. \times 10 mm. | 1 |
| 8 | MTR109 | Ring spanner, $\frac{5}{16}'' \times \frac{1}{2}''$ B.S.F. | 1 |
| 9 | MTR110 | Combination spanner, 12 mm. \times 14 mm. | 1 |
| 10 | MTR140 | Combination spanner | 1 |

ACCESSORIES GROUP 'M'

| GROUP NO. | SALES NO. | DESCRIPTION | NUMBER OFF |
|-----------|-----------|--|------------|
| 1 | MTR141 | Legshield kit. Pearl grey | 1 |
| 2 | MTR113 | Windscreen | 1 |
| 3 | BYD680 | Pannier bags, Grey | 1 pr. |
| or 3 | BYD681 | Pannier bags, Gordon tartan | 1 pr. |
| or 3 | BYD682 | Pannier bags, Royal Steward tartan | 1 pr. |
| 4 | MTR138 | Toolbag | 1 |
| 5 | MTR115 | Speedometer kit, complete. NM.1 and PM.1 | 1 |
| 6 | MTR.116 | Speedometer cable | 1 |
| 7 | MTR321 | Speedometer head | 1 |
| 8 | MTR144 | Speedometer drive unit | 1 |
| 9 | MTR126 | Lens, speedometer head | 1 |
| 10 | MTR127 | Bezel, speedometer head | 1 |
| 11 | MTR128 | Joint, speedometer lens | 1 |
| 12 | MTR279 | Handlebar mounting bracket, c/w nut and bolt. NM.1 and PM.1 | 1 |
| 13 | MMN231 | Nut, speedometer head securing... .. | 1 |
| 14 | MMM116 | Touch up enamel (state colour required) | 1 |
| 15 | MMM151 | Undercoat for touch up enamel (state colour required) | 1 |

SERVICE EXCHANGE GROUP 'N'

| GROUP NO. | SALES NO. | DESCRIPTION | NUMBER OFF |
|-----------|-----------|--|------------|
| 1 | MTX101 | Basic engine 1'39 B.H.P. | 1 |
| 2 | MTX134 | Basic engine 1'7 B.H.P. | 1 |
| 3 | MTX178 | Engine complete (with magneto and clutch but less carburettor) 1'39 B.H.P. | 1 |
| 4 | MTX179 | Engine complete (with magneto and clutch but less carburettor) 1'7 B.H.P. | 1 |
| 5 | MTX104 | Crankshaft c/w connecting rod, small end bearing and gudgeon pin. 1'39 B.H.P. | 1 |
| 6 | MTX117 | Crankshaft c/w connecting rod, small end bearing and gudgeon pin. 1'7 B.H.P. | 1 |
| 7 | MTX106 | Clutch | 1 |
| *8 | MTX175 | Clutch drum c/w lined springs | 1 |
| 9 | MTX108 | Clutch shoes, re-lined | 1 pr. |
| 10 | MTX105 | Stator plate c/w coils, contact breaker and condenser but less external ignition coil (without rim on backplate) | 1 |
| 11 | MTX142 | Stator plate c/w coils, contact breaker and condenser but less external ignition coil (with rim on backplate, blue L.T. coil) | 1 |
| 12 | MTX171 | Carburettor, less air cleaner and control cables (B.A. series) | 1 |
| 13 | MTX109 | Brake shoes, re-lined, front wheel | 1 pr. |
| 14 | MTX110 | Brake shoes, re-lined, rear wheel | 1 pr. |
| 15 | MTX113 | Frame bare, pearl grey. RM.4. | 1 |
| 16 | MTX145 | Frame bare, royal carmine. PM.1. | 1 |
| 17 | MTX146 | Frame bare, ice blue. NM.1. | 1 |

*Clutch drums which are not suitable for this scheme can be fitted with new leaf springs at our works.

Magneto flywheels are not acceptable for Service Exchange except when returned as part of a complete engine. In this case, if returned with broken or loose magnets, a surcharge will be made.

CONDITIONS OF SERVICE EXCHANGE

This service enables the units listed to be readily available on an exchange basis through Raleigh key dealers or alternatively direct from the factory.

Thus off-the-road time can be cut to a minimum and the owner also has the benefit of a unit overhauled to the most rigorous standards and guaranteed by the factory.

The attention of all concerned is drawn to the following points:—

1. The fullest details should be quoted of the model and type of machine for which the replacement unit is required.

2. This service is essentially an exchange service and only provides for the supply of a standard replacement unit in exchange for the original. It does not provide for the overhaul and return of individual units or for the supply of advance replacements.

3. We cannot undertake to return to the previous owner any component part of a displaced unit and no allowance can be made in respect of any new material which may have been fitted to the unit prior to exchange.

4. All replacement units are built to standard specifications and an extra charge will be made at the current retail price in respect of any component deficient from the displaced unit.

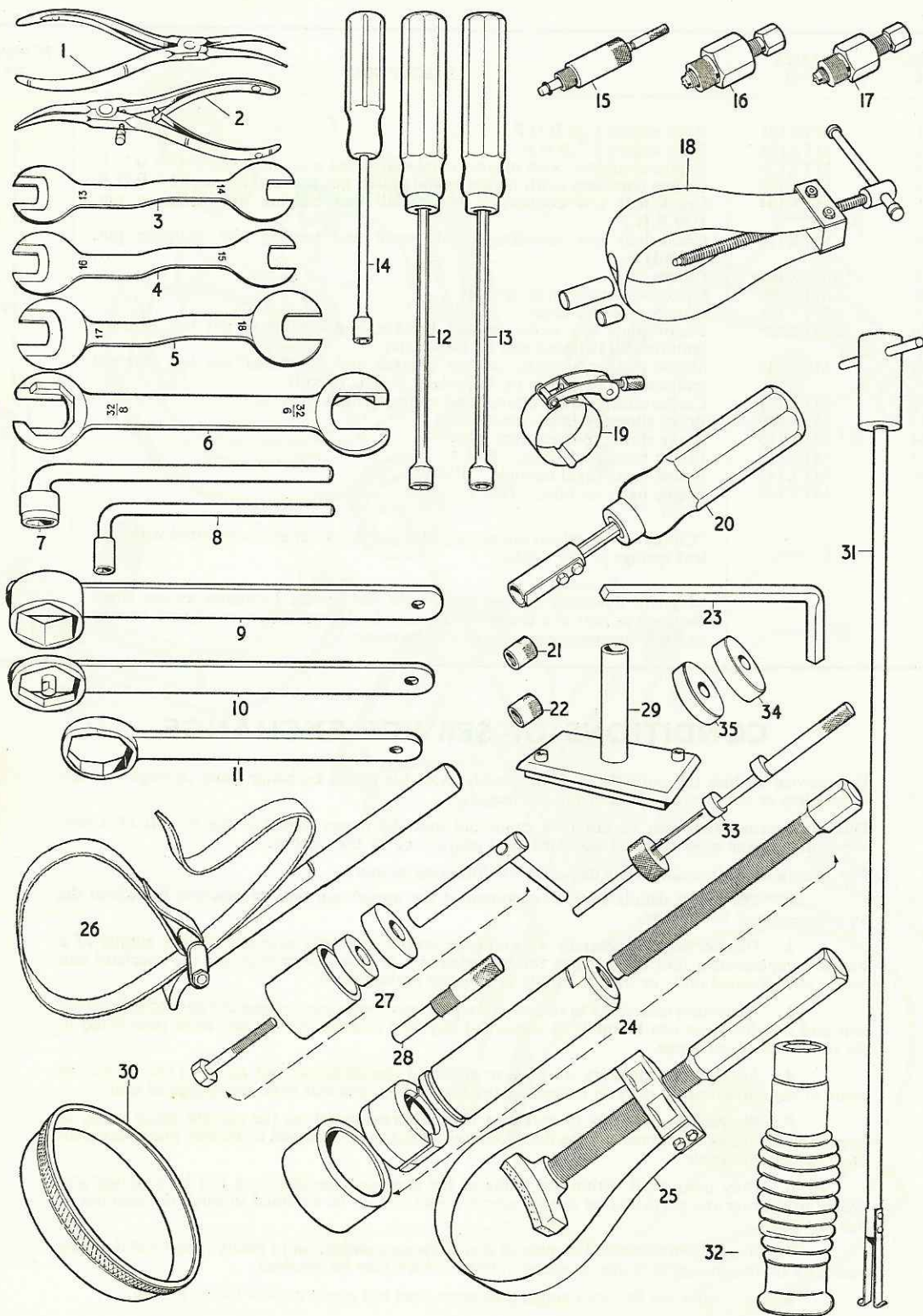
5. We reserve the right to make an extra charge, based on the current retail price, in respect of any major component of the displaced unit found to be damaged or broken due to accident or to be beyond repair.

6. Only units built within the limits of the standard specifications can be supplied and orders stipulating any particular or special specifications cannot be accepted through the medium of this service.

7. It is helpful to remind owners of their statutory obligation to notify their local licensing authority of any change in frame or engine number which may be involved.

8. We regret the Service Exchange Scheme does not apply outside Great Britain.

SPECIAL WORKSHOP TOOLS GROUP '0'



SPECIAL WORKSHOP TOOLS GROUP '0'

| ILLUS. NO. | SALES NO. | DESCRIPTION | NUMBER OFF |
|------------|-----------|--|------------|
| 1 | MTR218 | Circlip pliers, internal type | |
| 2 | MTR219 | Circlip pliers, external type | |
| 3 | MTR232 | Cone spanner, 13×14 mm. A.F. | |
| 4 | MTR233 | Cone spanner, 15×16 mm. A.F. | |
| 5 | MTR234 | Cone spanner, 17×18 mm. A.F. | |
| 6 | MTR230 | Steering head locknut spanner, double ended | |
| 7 | MTR215 | Clutch drum nut wrench, 14 mm. A.F.... .. | |
| 8 | MTR221 | Cylinder head nut wrench, 10 mm. A.F. | |
| *9 | MTR216 | Clutch hub nut wrench, 35 mm. A.F. | |
| 10 | MTR229 | Steering head lower bolt spanner, 32 mm. A.F. | |
| 11 | MTR228 | Steering head locknut spanner, 32 mm. A.F. | |
| *12 | MTR225 | Jet socket spanner, 9 mm. A.F. | |
| 13 | MTR226 | Jet socket spanner, 8 mm. A.F. | |
| 14 | MTR227 | Grease nipple socket spanner, 6 mm. A.F. | |
| 15 | MTR182 | Ignition advance gauge | |
| 16 | MTR207 | Magneto cam extractor | |
| 17 | MTR208 | Clutch drum extractor | |
| 18 | MTR181 | Gudgeon pin extractor | |
| 19 | MTR223 | Piston ring clamp | |
| 20 | MTR217 | Clutch key positioning tool | |
| 21 | MTR209 | Thread protector, 10 mm. R.H. | |
| 21 | MTR281 | Thread protector, 11 mm. R.H. | |
| 22 | MTR210 | Thread protector, 10 mm. L.H. | |
| 22 | MTR211 | Thread protector, 11 mm. L.H. | |
| 23 | MTR212 | Flywheel nut wrench, 10 mm. square | |
| 24 | MTR224 | Crankshaft bearing extractor | |
| 25 | MTR214 | Flywheel holding tool, steel band type | |
| 26 | MTR213 | Flywheel holding tool, webbing strap type | |
| *27 | MTR231 | Engine mounting rubber bush fitting tool | |
| 28 | MTR180 | Piston stop | |
| *29 | MTR237 | Clutch holding tool | |
| 30 | MTR301 | Coil centralising ring | |
| 31 | MTR239 | Fork bush removal tool | |
| 32 | MTR241 | Magnetic extractor for clutch washers | |
| 33 | MTR242 | Crankshaft—crankcase gauge | |
| 34 | MTR243 | Dummy bearings, 42×15×13 mm. | |
| 35 | MTR244 | Dummy bearings, 42×16×13 mm. | |
| *N.I. | MTR245 | Rear hub bearing extractor | |
| N.I. | MTR240 | Replacement springs and rivets for MTR239 fork tool | |
| N.I. | MTR247 | Exhaust nut spanner | |

N.I. = Not illustrated
A.F. = Across flats
* = Items marked thus are not applicable to this machine

NUMERICAL INDEX

| SALES NO. | GROUP | ILLUS. NO. | SALES NO. | GROUP | ILLUS. NO. | SALES NO. | GROUP | ILLUS. NO. | | | |
|-----------|-------|------------|-----------|--------|------------|-----------|-------|------------|-----|----|------|
| BYA440 | ... | G | N.I. | MMN127 | ... | Jb | 15 | MMW101 | ... | I | 28 |
| BYD680 | ... | M | 3 | MMN146 | ... | A | 42 | MMW101 | ... | Ja | 30 |
| BYD681 | ... | M | 3 | MMN147 | ... | A | 51 | MMW101 | ... | Jb | 30 |
| BYD682 | ... | M | 3 | MMN148 | ... | A | 1 | MMW101 | ... | Kb | 14 |
| BZM851 | ... | G | 22 | MMN148 | ... | Ja | 4 | MMW105 | ... | G | 42 |
| BZM852 | ... | G | 22 | MMN149 | ... | A | 32 | MMW105 | ... | Jb | 16 |
| MKM116 | ... | Jb | 10 | MMN150 | ... | A | 46 | MMW109 | ... | Jb | 8 |
| MKM117 | ... | Jb | 11 | MMN163 | ... | B | 12 | MMW110 | ... | Jb | 4 |
| MMB108 | ... | Jb | 6 | MMN166 | ... | B | 12 | MMW129 | ... | I | 30 |
| MMB117 | ... | G | 44 | MMN171 | ... | E | 35 | MMW139 | ... | G | 33 |
| MMB124 | ... | G | 46 | MMN180 | ... | C | 9 | MMW144 | ... | G | 47 |
| MMB129 | ... | Jb | 12 | MMN181 | ... | C | 23 | MMW157 | ... | Fa | 5 |
| MMB129 | ... | Jb | 14 | MMN187 | ... | Fa | 20 | MMW164 | ... | A | 41 |
| MMB140 | ... | G | 45 | MMN187 | ... | Fb | 13 | MMW165 | ... | A | 28 |
| MMB145 | ... | A | 12 | MMN188 | ... | Fa | 30 | MMW168 | ... | A | 10 |
| MMB146 | ... | A | 6 | MMN188 | ... | Fb | 23 | MMW169 | ... | A | 10 |
| MMB147 | ... | A | 7 | MMN189 | ... | A | 56 | MMW170 | ... | A | 10 |
| MMB148 | ... | Ka | 11 | MMN189 | ... | Fa | 35 | MMW171 | ... | A | 2 |
| MMB164 | ... | B | 20 | MMN189 | ... | Fb | 28 | MMW172 | ... | A | 4 |
| MMB171 | ... | E | 33 | MMN189 | ... | Ja | 29 | MMW172 | ... | Ja | 5 |
| MMB177 | ... | C | 11 | MMN189 | ... | Jb | 31 | MMW174 | ... | A | 45 |
| MMB178 | ... | C | 28 | MMN196 | ... | H | 3 | MMW178 | ... | A | 10 |
| MMB192 | ... | Fa | 22 | MMN197 | ... | H | 5 | MMW179 | ... | A | 10 |
| MMB192 | ... | Fb | 15 | MMN198 | ... | H | 6 | MMW181 | ... | A | 52 |
| MMB193 | ... | Fa | 32 | MMN199 | ... | H | 13 | MMW200 | ... | B | 1 |
| MMB193 | ... | Fb | 25 | MMN200 | ... | H | 16 | MMW201 | ... | B | 3 |
| MMB194 | ... | Fa | 33 | MMN200 | ... | I | 21 | MMW202 | ... | B | 9 |
| MMB194 | ... | Fb | 26 | MMN201 | ... | H | 21 | MMW203 | ... | B | N.I. |
| MMB194 | ... | Jb | 29 | MMN202 | ... | I | 1 | MMW204 | ... | B | N.I. |
| MMB194 | ... | Kb | 13 | MMN203 | ... | I | 2 | MMW205 | ... | B | N.I. |
| MMB195 | ... | Fa | 4 | MMN204 | ... | I | 5 | MMW206 | ... | B | 15 |
| MMB196 | ... | Fa | 7 | MMN205 | ... | I | 26 | MMW207 | ... | B | 16 |
| MMB203 | ... | C | 37 | MMN218 | ... | G | 48 | MMW231 | ... | E | 5 |
| MMB205 | ... | G | 27 | MMN219 | ... | C | 39 | MMW232 | ... | E | 9 |
| MMB206 | ... | G | 41 | MMN219 | ... | G | 43 | MMW233 | ... | E | 34 |
| MMB236 | ... | D | 7 | MMN226 | ... | D | 10 | MMW233 | ... | G | 49 |
| MMB237 | ... | D | 8 | MMN227 | ... | D | 20 | MMW234 | ... | E | 41 |
| MMB238 | ... | D | 12 | MMN228 | ... | D | 20 | MMW234 | ... | Fb | N.I. |
| MMB247 | ... | Ka | 24 | MMN231 | ... | Ka | 19 | MMW245 | ... | C | 2 |
| MMB247 | ... | Kb | 16 | MMN231 | ... | M | 13 | MMW246 | ... | C | 2 |
| MMB257 | ... | Jb | 23 | MMN232 | ... | Kb | 6 | MMW247 | ... | C | 12 |
| MMB237 | ... | Jb | 21 | MMN233 | ... | Ka | 29 | MMW248 | ... | C | 22 |
| MMB275 | ... | G | 50 | MMN233 | ... | Kb | 21 | MMW265 | ... | Fa | 24 |
| MMB282 | ... | Ja | 9 | MMN276 | ... | E | 27 | MMW265 | ... | Fb | 17 |
| MMB283 | ... | Ja | 14 | MMP128 | ... | A | 47 | MMW266 | ... | I | 24 |
| MMB284 | ... | Ja | 15 | MMP129 | ... | A | 38 | MMW272 | ... | H | 4 |
| MMB285 | ... | Ja | 23 | MMP130 | ... | A | 37 | MMW273 | ... | H | 7 |
| MMB286 | ... | Ja | 2 | MMP132 | ... | E | 39 | MMW274 | ... | H | 12 |
| MMB287 | ... | Fa | 40 | MMP135 | ... | E | 26 | MMW275 | ... | I | 6 |
| MMB288 | ... | Ja | 28 | MMP136 | ... | G | 9 | MMW276 | ... | I | 10 |
| MMB336 | ... | G | 5 | MMP137 | ... | G | 21 | MMW288 | ... | C | 38 |
| MML101 | ... | Fa | 29 | MMP142 | ... | C | 25 | MMW289 | ... | G | 6 |
| MML103 | ... | H | 10 | MMP145 | ... | I | 29 | MMW307 | ... | D | 9 |
| MML104 | ... | Fb | 22 | MMP146 | ... | I | 22 | MMW308 | ... | D | 13 |
| MMM116 | ... | M | 14 | MMP149 | ... | G | 39 | MMW313 | ... | Ka | 30 |
| MMM151 | ... | M | 15 | MMP154 | ... | Ja | 27 | MMW313 | ... | Kb | 22 |
| MMN104 | ... | Jb | 13 | MMP154 | ... | Jb | 27 | MMW314 | ... | Ka | 12 |
| MMN109 | ... | Jb | 7 | MMP158 | ... | Ja | 17 | MMW337 | ... | G | 51 |
| | | | | MMP159 | ... | Ja | 13 | MMW340 | ... | Fa | 39 |
| | | | | MMW101 | ... | A | 57 | MTA101 | ... | A | 18 |
| | | | | MMW101 | ... | Fa | 34 | MTA102 | ... | A | 49 |
| | | | | MMW101 | ... | Fb | 27 | MTA105 | ... | A | 19 |
| | | | | MMW101 | ... | G | 52 | MTA106 | ... | A | 20 |
| | | | | | | | | MTA107 | ... | A | 21 |

NUMERICAL INDEX

| SALES NO. | GROUP | ILLUS. NO. | SALES NO. | GROUP | ILLUS. NO. | SALES NO. | GROUP | ILLUS. NO. | | | |
|-----------|-------|------------|-----------|--------|------------|-----------|-------|------------|-----|----|------|
| MTA108 | ... | A | 29 | MTD184 | ... | E | 28 | MTH128 | ... | C | 34 |
| MTA109 | ... | A | 30 | MTD185 | ... | E | 30 | MTH129 | ... | C | S.A. |
| MTA110 | ... | A | 22 | MTD186 | ... | E | 31 | MTH195 | ... | C | 3 |
| MTA112 | ... | A | 23 | MTD187 | ... | E | 17 | MTH196 | ... | C | 4 |
| MTA113 | ... | A | 48 | MTD188 | ... | E | 14 | MTH197 | ... | C | 5 |
| MTA115 | ... | A | 24 | MTD189 | ... | E | 15 | MTH215 | ... | C | 7 |
| MTA116 | ... | A | 25 | MTD190 | ... | E | 13 | MTH217 | ... | C | 1 |
| MTA118 | ... | A | 55 | MTD191 | ... | E | 18 | | | | |
| MTA119 | ... | A | 54 | MTD192 | ... | E | 20 | MTJ101 | ... | Fb | 1 |
| MTA120 | ... | A | 53 | MTD193 | ... | E | 16 | MTJ102 | ... | Fb | 2 |
| MTA121 | ... | A | 33 | MTD194 | ... | E | 25 | MTJ103 | ... | Fa | 9 |
| MTA122 | ... | A | 15 | MTD195 | ... | E | 23 | MTJ103 | ... | Fb | 3 |
| MTA123 | ... | A | 14 | MTD196 | ... | E | 24 | MTJ104 | ... | Fa | 10 |
| MTA124 | ... | A | 14 | MTD197 | ... | E | 3 | MTJ104 | ... | Fb | 4 |
| MTA125 | ... | A | 16 | MTD198 | ... | E | 4 | MTJ105 | ... | Fa | 11 |
| MTA126 | ... | A | 17 | MTD199 | ... | E | 2 | MTJ105 | ... | Fb | 5 |
| MTA127 | ... | A | 27 | MTD201 | ... | E | 37 | MTJ106 | ... | Fa | 12 |
| MTA131 | ... | A | 8 | MTD202 | ... | E | 40 | MTJ106 | ... | Fb | 6 |
| MTA132 | ... | A | 9 | MTD203 | ... | E | 38 | MTJ108 | ... | Fa | 14 |
| MTA134 | ... | A | 3 | MTD204 | ... | E | 36 | MTJ108 | ... | Fb | 8 |
| MTA135 | ... | A | 5 | MTD210 | ... | E | 1 | MTJ111 | ... | Fa | 17 |
| MTA136 | ... | A | 13 | MTD211 | ... | E | 6 | MTJ111 | ... | Fb | 10 |
| MTA137 | ... | A | 39 | MTD220 | ... | E | 19 | MTJ112 | ... | Fa | 18 |
| MTA138 | ... | A | 40 | MTD243 | ... | E | 12 | MTJ112 | ... | Fb | 11 |
| MTA139 | ... | A | 31 | MTD244 | ... | E | 1 | MTJ113 | ... | Fa | 19 |
| MTA140 | ... | A | 34 | MTD248 | ... | E | 21 | MTJ113 | ... | Fb | 12 |
| MTA141 | ... | A | 36 | MTD249 | ... | E | 22 | MTJ115 | ... | Fa | 21 |
| MTA143 | ... | A | 44 | MTF101 | ... | G | 1 | MTJ116 | ... | Fa | 23 |
| MTA144 | ... | A | N.I. | MTF103 | ... | G | 8 | MTJ116 | ... | Fb | 16 |
| MTA145 | ... | A | N.I. | MTF104 | ... | G | 11 | MTJ117 | ... | Fa | 25 |
| MTA146 | ... | A | N.I. | MTF105 | ... | G | 18 | MTJ117 | ... | Fb | 18 |
| MTA179 | ... | A | 11 | MTF106 | ... | G | 19 | MTJ118 | ... | Fa | 26 |
| MTA263 | ... | A | 10 | MTF107 | ... | G | 20 | MTJ118 | ... | Fb | 19 |
| MTA269 | ... | A | 11 | MTF110 | ... | G | 23 | MTJ119 | ... | Fa | 27 |
| MTA271 | ... | A | 9 | MTF111 | ... | G | 24 | MTJ119 | ... | Fb | 20 |
| MTA279 | ... | A | 26 | MTF123 | ... | G | 10 | MTJ120 | ... | Fa | 28 |
| MTA284 | ... | A | 50 | MTF164 | ... | G | 7 | MTJ120 | ... | Fb | 21 |
| MTA285 | ... | A | 35 | MTF167 | ... | G | 1 | MTJ121 | ... | Fa | S.A. |
| | | | | MTF168 | ... | G | 1 | MTJ121 | ... | Fb | S.A. |
| MTB101 | ... | B | 2 | MTF169 | ... | G | 11 | MTJ122 | ... | Fa | 31 |
| MTB102 | ... | B | 4 | MTF172 | ... | G | 11 | MTJ122 | ... | Fb | 24 |
| MTB103 | ... | B | 5 | | | | | MTJ123 | ... | Fa | 36 |
| MTB104 | ... | B | 6 | MTH105 | ... | C | N.I. | MTJ123 | ... | Fb | 29 |
| MTB105 | ... | B | 7 | MTH106 | ... | C | 8 | MTJ124 | ... | Fa | 1 |
| MTB106 | ... | B | 8 | MTH107 | ... | C | 10 | MTJ125 | ... | Fa | 2 |
| MTB107 | ... | B | 10 | MTH108 | ... | C | 13 | MTJ126 | ... | Fa | 3 |
| MTB108 | ... | B | 11 | MTH109 | ... | C | 14 | MTJ127 | ... | Fa | 6 |
| MTB109 | ... | B | 13 | MTH110 | ... | C | 15 | MTJ128 | ... | Fa | 8 |
| MTB110 | ... | B | 14 | MTH111 | ... | C | 16 | MTJ130 | ... | Fa | S.A. |
| MTB111 | ... | B | 17 | MTH112 | ... | C | 17 | MTJ176 | ... | Fa | 38 |
| MTB112 | ... | B | 18 | MTH113 | ... | C | 18 | MTJ177 | ... | Fa | 15 |
| MTB113 | ... | B | 19 | MTH114 | ... | C | 19 | MTJ177 | ... | Fa | 16 |
| MTB115 | ... | B | S.A. | MTH115 | ... | C | 20 | MTJ177 | ... | Fb | 9 |
| MTB116 | ... | B | 21 | MTH116 | ... | C | 21 | MTJ178 | ... | Fa | 1 |
| MTB117 | ... | B | 22 | MTH117 | ... | C | 24 | MTJ179 | ... | Fa | 2 |
| MTB118 | ... | B | 23 | MTH118 | ... | C | 26 | MTJ180 | ... | Fa | 3 |
| MTB119 | ... | B | N.I. | MTH119 | ... | C | 27 | MTJ186 | ... | Fa | S.A. |
| MTB132 | ... | B | S.A. | MTH120 | ... | C | 27 | MTJ187 | ... | Fb | S.A. |
| | | | | MTH121 | ... | C | 27 | MTJ192 | ... | Fb | 14 |
| MTD177 | ... | E | 32 | MTH122 | ... | C | 27 | MTJ193 | ... | Fa | 21 |
| MTD178 | ... | E | 7 | MTH123 | ... | C | 29 | MTJ195 | ... | Fb | 7 |
| MTD179 | ... | E | 8 | MTH124 | ... | C | 30 | MTJ196 | ... | Fa | 13 |
| MTD181 | ... | E | 29 | MTH125 | ... | C | 31 | | | | |
| MTD182 | ... | E | 10 | MTH126 | ... | C | 32 | MTK101 | ... | H | S.A. |
| MTD183 | ... | E | 11 | MTH127 | ... | C | 33 | MTK102 | ... | H | N.I. |

NUMERICAL INDEX

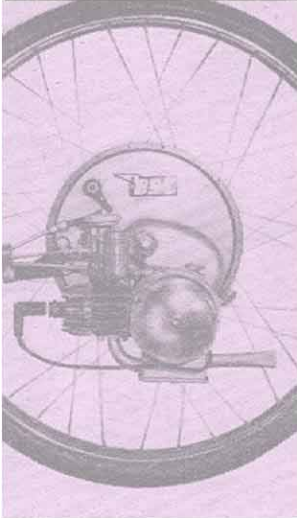
| SALES NO. | GROUP | ILLUS. NO. | SALES NO. | GROUP | ILLUS. NO. | SALES NO. | GROUP | ILLUS. NO. | | | |
|-----------|-------|------------|-----------|--------|------------|-----------|-------|------------|-----|----|------|
| MTK102 | ... | I | N.I. | MTL124 | ... | G | 30 | MTM158 | ... | D | S.A. |
| MTK103 | ... | H | N.I. | MTL125 | ... | G | 31 | MTM159 | ... | D | 19 |
| MTK104 | ... | H | N.I. | MTL126 | ... | G | 32 | MTM164 | ... | D | S.A. |
| MTK104 | ... | I | N.I. | MTL127 | ... | G | 34 | | | | |
| MTK107 | ... | H | N.I. | MTL128 | ... | G | 35 | | | | |
| MTK107 | ... | I | N.I. | MTL129 | ... | G | 36 | MTN101 | ... | Jb | 1 |
| MTK108 | ... | H | 1 | MTL130 | ... | G | 37 | MTN103 | ... | Jb | 3 |
| MTK109 | ... | H | S.A. | MTL131 | ... | G | 38 | MTN104 | ... | Jb | 5 |
| MTK110 | ... | H | 2 | MTL132 | ... | G | 40 | MTN105 | ... | Jb | 2 |
| MTK111 | ... | H | 8 | MTL133 | ... | G | N.I. | MTN106 | ... | Jb | 9 |
| MTK112 | ... | H | 9 | MTL135 | ... | G | N.I. | MTN107 | ... | Jb | S.A. |
| MTK113 | ... | H | 11 | MTL136 | ... | G | N.I. | MTN108 | ... | Jb | S.A. |
| MTK115 | ... | H | 14 | MTL137 | ... | G | N.I. | MTN111 | ... | Jb | 19 |
| MTK116 | ... | H | 15 | MTL138 | ... | G | N.I. | MTN112 | ... | Jb | 20 |
| MTK117 | ... | H | 17 | MTL139 | ... | G | N.I. | MTN113 | ... | Jb | 22 |
| MTK118 | ... | H | 18 | MTL140 | ... | G | N.I. | MTN114 | ... | Jb | S.A. |
| MTK119 | ... | H | 19 | MTL141 | ... | G | N.I. | MTN115 | ... | Jb | 24 |
| MTK120 | ... | H | 20 | MTL142 | ... | G | N.I. | MTN116 | ... | Jb | 32 |
| MTK121 | ... | H | 22 | MTL143 | ... | G | N.I. | MTN117 | ... | Jb | 33 |
| MTK122 | ... | H | 23 | MTL144 | ... | G | N.I. | MTN118 | ... | Ja | 35 |
| MTK123 | ... | H | S.A. | MTL185 | ... | G | N.I. | MTN118 | ... | Jb | 34 |
| MTK124 | ... | H | N.I. | MTL270 | ... | C | 6 | MTN119 | ... | Jb | 35 |
| MTK125 | ... | I | N.I. | MTL275 | ... | G | 28 | MTN120 | ... | Jb | 36 |
| MTK126 | ... | I | N.I. | MTL276 | ... | G | 30 | MTN121 | ... | Jb | 37 |
| MTK127 | ... | I | 12 | MTL277 | ... | G | 32 | MTN122 | ... | Jb | 38 |
| MTK128 | ... | I | S.A. | MTL278 | ... | G | 31 | MTN123 | ... | Jb | 39 |
| MTK129 | ... | I | S.A. | MTL279 | ... | G | 2 | MTN124 | ... | Jb | 40 |
| MTK130 | ... | I | 27 | MTL280 | ... | G | 3 | MTN125 | ... | Jb | 41 |
| MTK131 | ... | I | 3 | MTL281 | ... | G | 28 | MTN126 | ... | Ja | N.I. |
| MTK132 | ... | I | 4 | MTL282 | ... | G | 30 | MTN126 | ... | Jb | N.I. |
| MTK133 | ... | I | 7 | MTL283 | ... | G | 32 | MTN136 | ... | Ja | 39 |
| MTK134 | ... | I | 8 | MTL284 | ... | G | 31 | MTN200 | ... | Ja | 1 |
| MTK135 | ... | I | 9 | MTL285 | ... | G | 2 | MTN202 | ... | Ja | 12 |
| MTK136 | ... | I | 11 | MTL286 | ... | G | 3 | MTN203 | ... | Ja | 19 |
| MTK137 | ... | I | 13 | MTL287 | ... | G | 34 | MTN204 | ... | Ja | 6 |
| MTK138 | ... | I | 14 | MTL288 | ... | G | 36 | MTN205 | ... | Ja | 21 |
| MTK139 | ... | I | 25 | MTL289 | ... | G | 37 | MTN206 | ... | Ja | 7 |
| MTK140 | ... | I | 18 | MTL290 | ... | G | 38 | MTN207 | ... | Ja | 8 |
| MTK141 | ... | I | S.A. | MTL291 | ... | G | 12 | MTN208 | ... | Ja | 10 |
| MTK144 | ... | I | 15 | MTL292 | ... | G | 14 | MTN209 | ... | Ja | 11 |
| MTK145 | ... | I | 17 | MTL293 | ... | G | N.I. | MTN210 | ... | Ja | 16 |
| MTK146 | ... | I | 16 | MTL294 | ... | C | 36 | MTN211 | ... | Ja | 20 |
| MTK147 | ... | I | 20 | MTL321 | ... | C | 36 | MTN212 | ... | Ja | 18 |
| MTK148 | ... | I | 23 | | | | | MTN213 | ... | Ja | 3 |
| MTK186 | ... | I | 19 | | | | | MTN214 | ... | Fa | 37 |
| | | | | MTM128 | ... | D | S.A. | MTN217 | ... | Ja | S.A. |
| MTL101 | ... | C | 35 | MTM129 | ... | D | 2 | MTN218 | ... | Ja | S.A. |
| MTL102 | ... | C | 35 | MTM130 | ... | D | 3 | MTN219 | ... | Ja | S.A. |
| MTL104 | ... | C | 36 | MTM131 | ... | D | 4 | MTN220 | ... | Ja | S.A. |
| MTL105 | ... | C | 40 | MTM132 | ... | D | 5 | MTN221 | ... | Ja | 42 |
| MTL106 | ... | C | 41 | MTM133 | ... | D | 6 | MTN222 | ... | Ja | 32 |
| MTL109 | ... | G | 2 | MTM134 | ... | D | 11 | MTN223 | ... | Ja | 34 |
| MTL110 | ... | G | 3 | MTM135 | ... | D | 14 | MTN224 | ... | Ja | 38 |
| MTL111 | ... | G | 4 | MTM136 | ... | D | 15 | MTN225 | ... | Ja | 22 |
| MTL112 | ... | G | 12 | MTM137 | ... | D | 16 | MTN230 | ... | Ja | 40 |
| MTL113 | ... | G | 13 | MTM138 | ... | D | 17 | MTN231 | ... | Ja | 36 |
| MTL114 | ... | G | 14 | MTM139 | ... | D | 18 | MTN232 | ... | Ja | 44 |
| MTL115 | ... | G | N.I. | MTM143 | ... | D | 23 | MTN234 | ... | Ja | 33 |
| MTL116 | ... | G | 15 | MTM144 | ... | D | 24 | MTN236 | ... | Ja | 37 |
| MTL117 | ... | G | 16 | MTM145 | ... | D | 25 | MTN238 | ... | Ja | 31 |
| MTL118 | ... | G | 17 | MTM146 | ... | D | 26 | MTN239 | ... | Ja | 41 |
| MTL119 | ... | G | 25 | MTM147 | ... | D | 27 | MTN240 | ... | Ja | 43 |
| MTL120 | ... | G | 26 | MTM148 | ... | D | 28 | MTN241 | ... | Ja | S.A. |
| MTL121 | ... | G | 28 | MTM153 | ... | D | 29 | MTN245 | ... | Jb | 18 |
| MTL123 | ... | G | 29 | MTM157 | ... | D | 1 | MTN256 | ... | Jb | S.A. |

NUMERICAL INDEX

| SALES NO. | GROUP | ILLUS. NO. | SALES NO. | GROUP | ILLUS. NO. | SALES NO. | GROUP | ILLUS. NO. | | | |
|-----------|-------|------------|-----------|--------|------------|-----------|-------|------------|-----|----|------|
| MTP102 | ... | Kb | 2 | MTP161 | ... | D | 21 | MTR216 | ... | O | 9 |
| MTP103 | ... | Kb | 3 | MTP162 | ... | D | 22 | MTR217 | ... | O | 20 |
| MTP104 | ... | Kb | S.A. | MTP198 | ... | Kb | 1 | MTR218 | ... | O | 1 |
| MTP105 | ... | Kb | 4 | MTP199 | ... | Kb | 1 | MTR219 | ... | O | 2 |
| MTP106 | ... | Kb | 5 | MTP202 | ... | Kb | S.A. | MTR221 | ... | O | 8 |
| MTP107 | ... | Kb | 7 | MTP205 | ... | Kb | S.A. | MTR223 | ... | O | 19 |
| MTP108 | ... | Kb | 8 | MTR101 | ... | L | 1 | MTR224 | ... | O | 24 |
| MTP109 | ... | Kb | 9 | MTR102 | ... | L | 2 | MTR225 | ... | O | 12 |
| MTP110 | ... | Kb | 10 | MTR104 | ... | L | 3 | MTR226 | ... | O | 13 |
| MTP111 | ... | Kb | 11 | MTR105 | ... | L | 4 | MTR227 | ... | O | 14 |
| MTP112 | ... | Kb | 12 | MTR106 | ... | L | 5 | MTR228 | ... | O | 11 |
| MTP114 | ... | Ka | 23 | MTR107 | ... | L | 6 | MTR229 | ... | O | 10 |
| MTP114 | ... | Kb | 15 | MTR108 | ... | L | 7 | MTR230 | ... | O | 6 |
| MTP115 | ... | Ka | 25 | MTR109 | ... | L | 8 | MTR231 | ... | O | 27 |
| MTP115 | ... | Kb | 17 | MTR110 | ... | L | 9 | MTR232 | ... | O | 3 |
| MTP116 | ... | Ka | 26 | MTR111 | ... | M | 2 | MTR233 | ... | O | 4 |
| MTP116 | ... | Kb | 18 | MTR113 | ... | M | 5 | MTR234 | ... | O | 5 |
| MTP117 | ... | Ka | 27 | MTR115 | ... | M | 5 | MTR237 | ... | O | 29 |
| MTP117 | ... | Kb | 19 | MTR116 | ... | M | 6 | MTR239 | ... | O | 31 |
| MTP118 | ... | Ka | 28 | MTR125 | ... | Ka | 13 | MTR240 | ... | O | N.I. |
| MTP118 | ... | Kb | 20 | MTR126 | ... | Ka | 14 | MTR241 | ... | O | 32 |
| MTP119 | ... | Ka | S.A. | MTR126 | ... | M | 9 | MTR242 | ... | O | 33 |
| MTP119 | ... | Kb | S.A. | MTR127 | ... | Ka | 15 | MTR243 | ... | O | 34 |
| MTP120 | ... | Ka | 31 | MTR127 | ... | M | 10 | MTR244 | ... | O | 35 |
| MTP120 | ... | Kb | 23 | MTR128 | ... | Ka | 16 | MTR245 | ... | O | N.I. |
| MTP121 | ... | Kb | N.I. | MTR128 | ... | M | 11 | MTR247 | ... | O | N.I. |
| MTP122 | ... | Ka | N.I. | MTR129 | ... | Ka | 17 | MTR251 | ... | Ka | S.A. |
| MTP122 | ... | Kb | N.I. | MTR130 | ... | Ka | 18 | MTR279 | ... | M | 12 |
| MTP124 | ... | Ja | 26 | MTR135 | ... | Ka | 32 | MTR281 | ... | O | 21 |
| MTP124 | ... | Jb | 26 | MTR138 | ... | M | 4 | MTR301 | ... | O | 30 |
| MTP125 | ... | Ja | 24 | MTR140 | ... | L | 10 | MTR321 | ... | M | 7 |
| MTP125 | ... | Jb | 28 | MTR141 | ... | M | 1 | MTX101 | ... | N | 1 |
| MTP128 | ... | Ka | 1 | MTR142 | ... | Ka | 20 | MTX104 | ... | N | 5 |
| MTP129 | ... | Ka | 2 | MTR143 | ... | Ka | 21 | MTX105 | ... | N | 10 |
| MTP130 | ... | Ka | 3 | MTR144 | ... | Ka | 22 | MTX106 | ... | N | 7 |
| MTP131 | ... | Ka | 4 | MTR144 | ... | M | 8 | MTX108 | ... | N | 9 |
| MTP132 | ... | Ka | 5 | MTR180 | ... | O | 28 | MTX109 | ... | N | 13 |
| MTP133 | ... | Ka | 6 | MTR181 | ... | O | 18 | MTX110 | ... | N | 14 |
| MTP134 | ... | Ka | 7 | MTR182 | ... | O | 15 | MTX113 | ... | N | 15 |
| MTP135 | ... | Ka | 8 | MTR207 | ... | O | 16 | MTX117 | ... | N | 6 |
| MTP136 | ... | Ka | 9 | MTR208 | ... | O | 17 | MTX134 | ... | N | 2 |
| MTP137 | ... | Ka | 10 | MTR209 | ... | O | 21 | MTX142 | ... | N | 11 |
| MTP138 | ... | Ka | S.A. | MTR210 | ... | O | 22 | MTX145 | ... | N | 16 |
| MTP144 | ... | Ka | N.I. | MTR211 | ... | O | 22 | MTX146 | ... | N | 17 |
| MTP145 | ... | Ka | N.I. | MTR212 | ... | O | 23 | MTX171 | ... | N | 12 |
| MTP146 | ... | Ka | N.I. | MTR213 | ... | O | 26 | MTX175 | ... | N | 8 |
| MTP147 | ... | Ja | 25 | MTR214 | ... | O | 25 | MTX178 | ... | N | 3 |
| MTP147 | ... | Jb | 25 | MTR215 | ... | O | 7 | MTX179 | ... | N | 4 |



IceniCAM Information Service



www.icenicam.org.uk