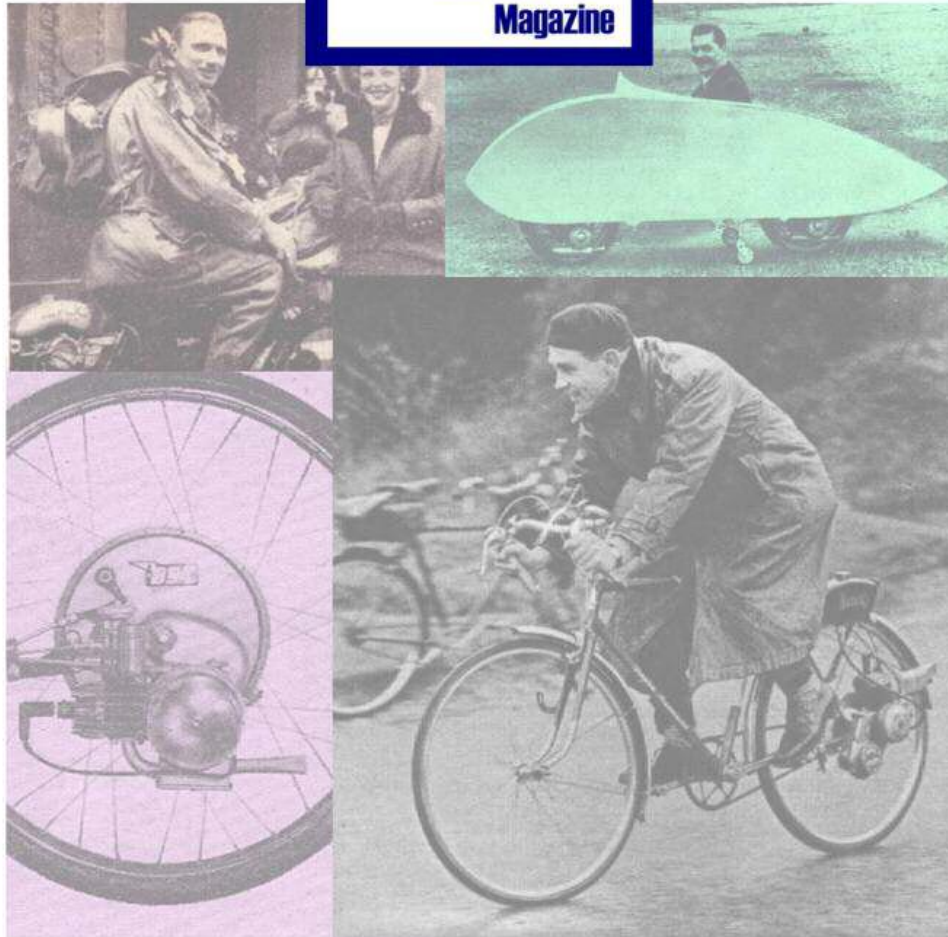
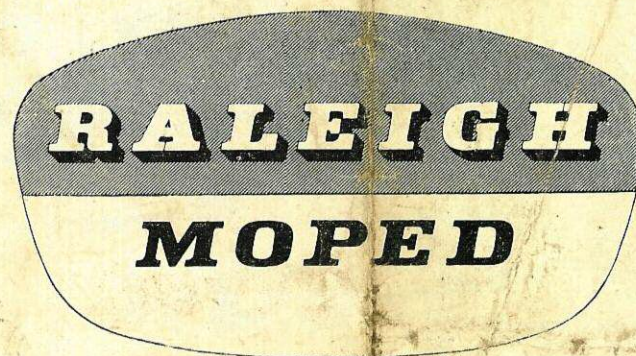


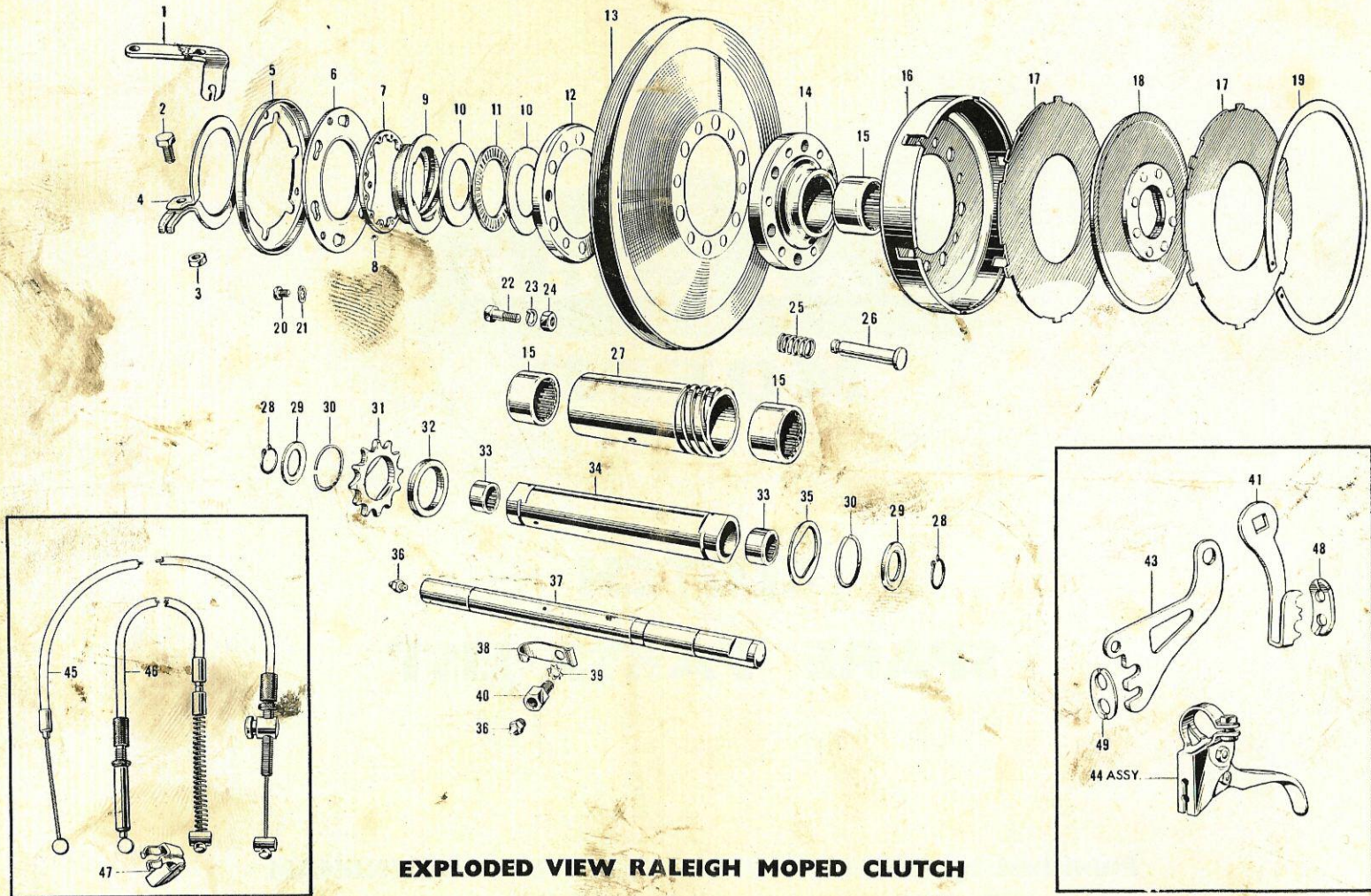
# IceniCAM Information Service





**CLUTCH  
SPARE PARTS LIST**

**Published by RALEIGH INDUSTRIES LTD • NOTTINGHAM**



**EXPLODED VIEW RALEIGH MOPED CLUTCH**

## RALEIGH MOPED CLUTCH SPARE PARTS LIST

Illus. No.	Part No.	Qty.	Description
1	4020063	1	Clutch Cable Stop .. .. .
2	2920622	1	$\frac{7}{32}$ " Bolt .. .. .
3	2920443	1	$\frac{7}{32}$ " Nut .. .. .
4	4020094	1	Release Ring Clip .. .. .
5	4020078	1	Locking Plate .. .. .
6	4020077	1	Release Plate .. .. .
7	4020076	1	Bearing Race .. .. .
8	4510375	12	$\frac{1}{8}$ " dia. Steel Ball .. .. .
9	4020055	1	Release Ring .. .. .
10	4020062	2	Bearing Thrust Washer .. .. .
11	4519494	1	Torrington Needle Thrust Bearing NTA2031 ..
12	4020075	1	Bearing Shroud .. .. .
13	4020013	1	Bottom Bracket Pulley .. .. .
14	4020058	1	Pulley Hub .. .. .
15	4519440	3	J.1812 Torrington Drawn Cup Roller Bearing or SC.1812 Ina Needle Shell Cage Bearing ..
16	4020057	1	Clutch Housing .. .. .
17	4020059	2	Clutch Driven Plate .. .. .
18	4020087	1	Driving Plate Assembly .. .. .
19	4020073	1	Internal Circlip .. .. .
20	4020079	3	Release Plate Screw .. .. .
21	3490654	3	$\frac{3}{16}$ " Shakeproof Washer .. .. .
22	4020061	6	Clutch Housing Bolt .. .. .
23	2380208	7	$\frac{1}{4}$ " Spring Washer .. .. .
24	4000030	7	$\frac{1}{4}$ " Nut .. .. .
25	4020060	6	Clutch Spring .. .. .
26	4020074	6	Clutch Release Pin .. .. .
27	4020054	1	Bottom Bracket Bearing Sleeve .. .. .
28	4519441	2	Seeger External Circlip $\frac{5}{8}$ " dia. shaft .. .. .
29	4020081	2	Thrust Washer .. .. .
30	4020008	2	Spring Ring for Drive Shaft .. .. .
31	4020004	1	Final Drive Sprocket .. .. .

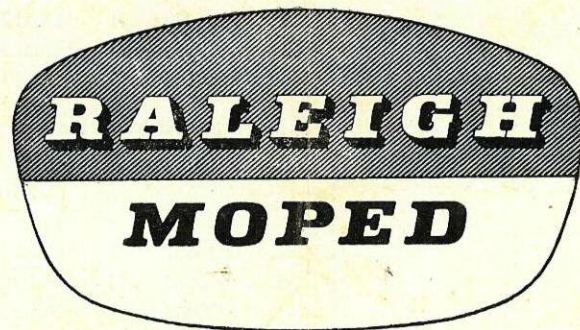
Illus. No.	Part No.	Qty.	Description
32	4020003	1	Spacer .. .. .
33	4519439	2	SC 108 Ina Needle Shell Cage Bearing or J 108 Torrington Drawn Cup Roller Bearing ..
34	4020056	1	Driving Shaft .. .. .
35	4020086	1	Clutch Retaining Washer .. .. .
36	4512194	2	Grease Nipple R.R.A. Type $\frac{1}{4}$ " x 26 T.P.I. RH.
37	4020007	1	Bottom Bracket Axle .. .. .
38	4020038	1	Cable Clip .. .. .
39	3490432	1	$\frac{1}{4}$ " Shakeproof Washer .. .. .
40	4020019	1	Location Pin .. .. .
41	3900008	1	Dual Brake Lever .. .. .
43	4010153	1	*Dual Brake Anchor Plate .. .. .
44	3610141C	1	Dual Brake Lever Assembly .. .. .

### The Dual Brake Lever Assembly comprises the following parts

NI.	3610141	1	Brake Lever .. .. .
NI.	4010150	1	Brake Fulcrum Right Hand .. .. .
NI.	4010151	1	Link .. .. .
NI.	4010152	1	Cable Stop Bolt .. .. .
NI.	2920583	1	Fulcrum Bolt .. .. .
NI.	2920443	1	Fulcrum Bolt Nut .. .. .
NI.	2920637	1	Clip Bolt .. .. .
NI.	2661056	1	Washer for Clip Bolt .. .. .
NI.	2920638	1	Nut for Clip Bolt .. .. .
45	GD 433A	1	*Rear Brake Cable .. .. .
46	4020072	1	Clutch Cable Assembly .. .. .
47	4020070	1	Locking Plate Pin and Bracket Assembly ..
48	4010190	1	*Security Plate .. .. .
49	4010191	1	*Adjuster Security Plate .. .. .
NI.		1	Clutch Conversion Set complete .. .. .
N.I.	4030074	1	Clutch Plate Assy-Tool .. .. .
N.I.	4030024	1	Clutch Bearing Assy-Tool .. .. .

\* These parts fitted only to models with Dual Operation to rear brake.

Abbreviation used: NI.—Not Illustrated.



PRINTED IN ENGLAND