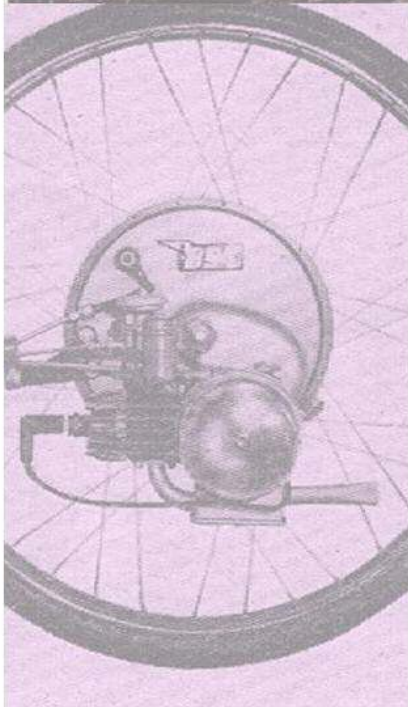


IceniCAM Information Service



www.icenicam.org.uk

Steyr-Daimler-Puch (G.B.) Ltd.

6 Trinity-Square

Nottingham NG1 4 AF.

ENGLAND

Telephone: Nottingham 42 4 82.



3 50 (ES)

England

VS 50 D

VS 50 DKH

Spare-Parts Catalogue

Edition April 1968

T A B L E O F C O N T E N T S

ENGINE	1. CRANKCASE
	2. BLOWER
	3. CYLINDER
	4. ENGINE PARTS
	5. CLUTCH
	6. GEARBOX
	7. STARTER MECHANISM, CRANKS, PEDALS - Vers.A ^x
	8. STARTER MECHANISM - Vers. B ^{xx}
	8a. KICKSTARTER
	9. GEARSHIFT
	10. CARBURETTOR
	11. INTAKE SILENCER
	12. EXHAUST
CHASSIS	13. FUEL TANK
	14. FRAME MUDGUARDS
	15. FOOTREST CARRIER, FOOT OPERATED BRAKE AND FOOTRESTS
	16. TWIN SEAT, SIDE BOXES, LUGGAGE CARRIER
	17. PIVOTED FORK, PROP STAND
	18. SHOCK ABSORBER
FRONT FORK	19. FRONT FORK AND STEERING (Version I)
	19a. FRONT FORK AND STEERING (Version II)
	20. HANDLEBAR, GEARSHIFT and THROTTLE TWIST GRIPS
	21. BOWDEN CABLES
ROAD WHEELS	22. FRONT WHEEL WITH SPEEDOMETER DRIVE
	23. SPEEDOMETER WITH DRIVING SHAFT
	25. REAR WHEEL, DRIVING CHAIN
ELECTRICAL EQUIPM.	26. GENERATOR
	27. HEADLAMP, RATTLE, TAIL-STOP-LIGHT AND SWITCH
ACCESSORIES	28. TOOLS, PUMP

^xVersion A: for model Puch VS 50 D with crank

^{xx}Version B: for model Puch VS 50 DKH with kickstarter.

To convert millimeters to inches, multiply by 0,03937

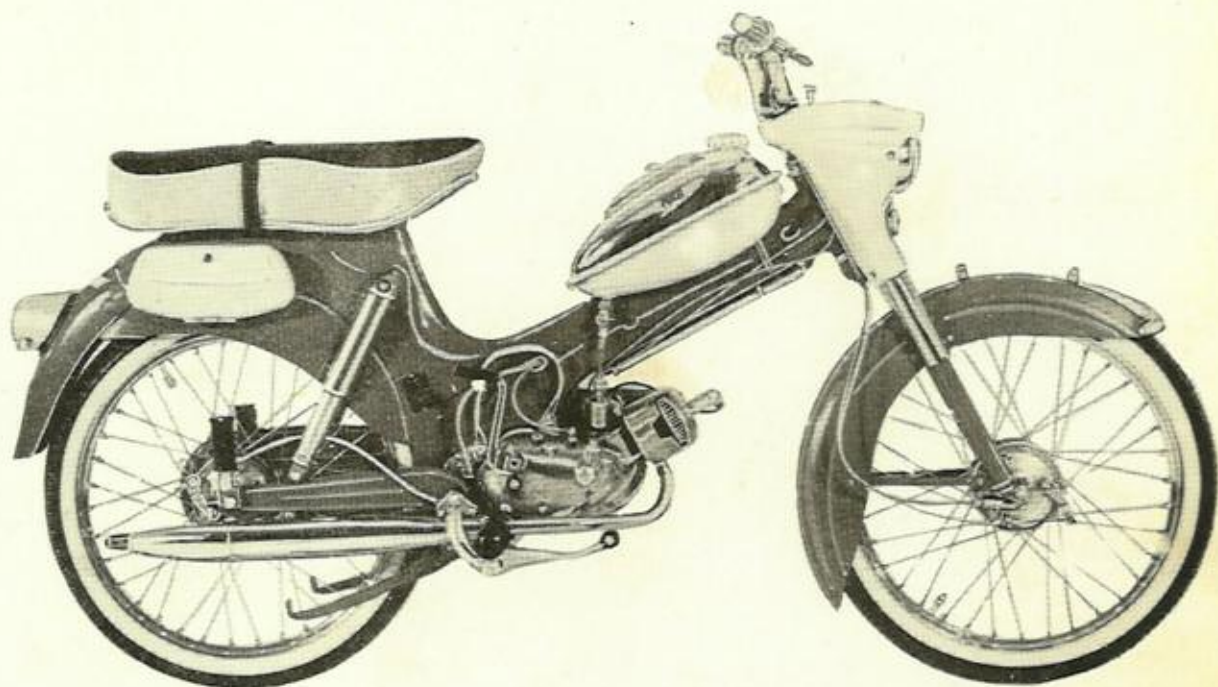
TABLE OF CONTENTS

1.	CRANKSHAFT	ENGINE
2.	BEARING	
3.	CYLINDER	
4.	ENGINE PARTS	
5.	CLUTCH	
6.	GEARBOX	
7.	STARTER MECHANISM, DRIVE, TYPE - 1	
8.	STARTER MECHANISM - Type - 2	
9.	IGNITION	
10.	VALVE	
11.	TRIALER SYSTEM	
12.	REAR	
13.	WELL TANK	CHASSIS
14.	FRAME MOUNTING	
15.	FOOTREST CARRIER, FOOT OPERATED BRAKE AND FOOTREST	
16.	TWIN SHAFT, SIDE DRIVE, HUBBARD CARRIER	
17.	INVERTED FORK, REAR STAND	
18.	SHOCK ABSORBER	
19.	FRONT FORK AND STEERING (Version I)	FRONT FORK
20.	FRONT FORK AND STEERING (Version II)	
21.	HANDLEBAR, CLAMP AND THROTTLE LEVER	
22.	GRIP	
23.	POWER CABLE	
24.	FRONT WHEEL WITH SPEEDOMETER DRIVE	ROAD WHEELS
25.	REAR WHEEL WITH WINDING SHAFT	
26.	REAR WHEEL, DRIVING CHAIN	
27.	REAR WHEEL, DRIVE CHAIN	
28.	REAR WHEEL, DRIVE CHAIN	
29.	HEADLAMP, BATTERY, TAIL-STOP-LIGHT AND SWITCH	
30.	WHEEL, HUB	ACCESSORIES

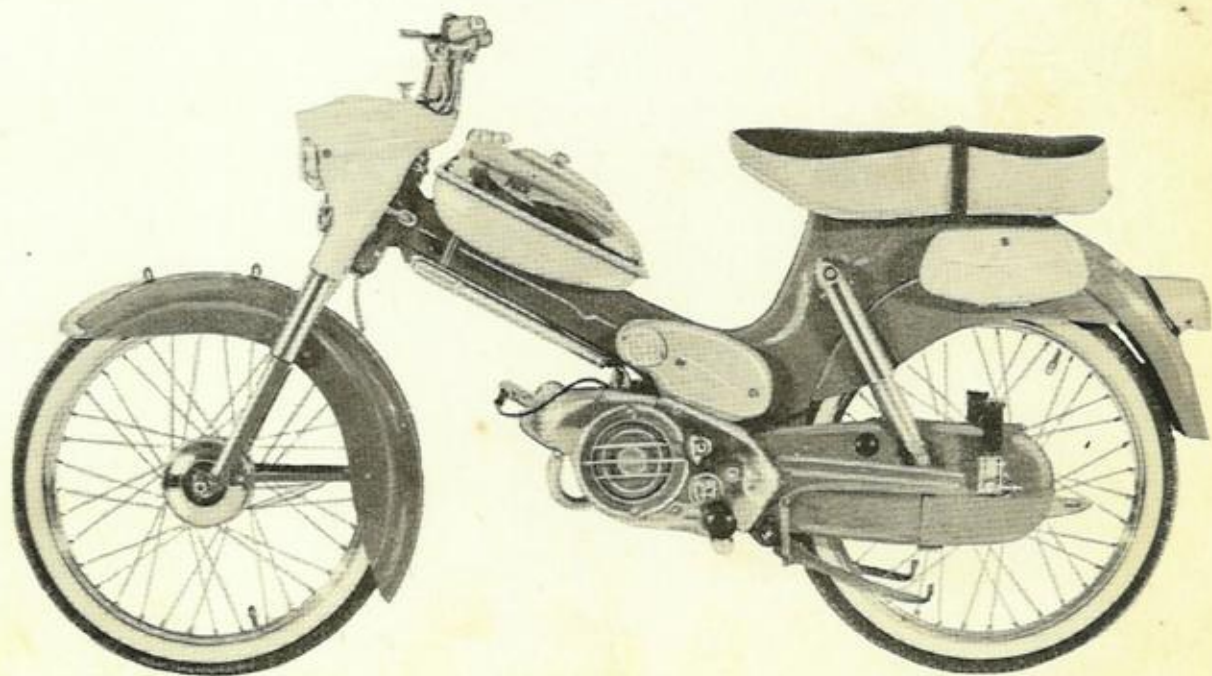
Version A: For model 75 50 D with crank
 Version B: For model 75 50 D with kickstart
 To convert millimeters to inches, multiply by 0.0254

**PUCH
VS 50 D
VS 50 DKH**

England



MODEL PUCH VS 50 DKH — VERSION B - MODEL WITH KICKSTARTER



England

PUCH
VS 50 D
VS 50 DKH



MODEL PUCH VS 50 DKH — VERSION E — MODEL WITH KICKSTARTER



I M P O R T A N T !

To get a quick and correct settlement of your spare parts orders following statements are necessary:

1. Exact statement of vehicle
2. Engine no.
3. Spare parts no.
4. Description
5. Colour
6. Required quantity
7. Wanted way of delivery

Beside this our general terms of sale and delivery are valuable.

Please direct your orders to:

STEYR-DAIMLER-PUCH (G.B.)Ltd.,
6 Trinity-Square
Nottingham NG1 4 AF.

ENGLAND

Telephone: Nottingham 42 4 82.

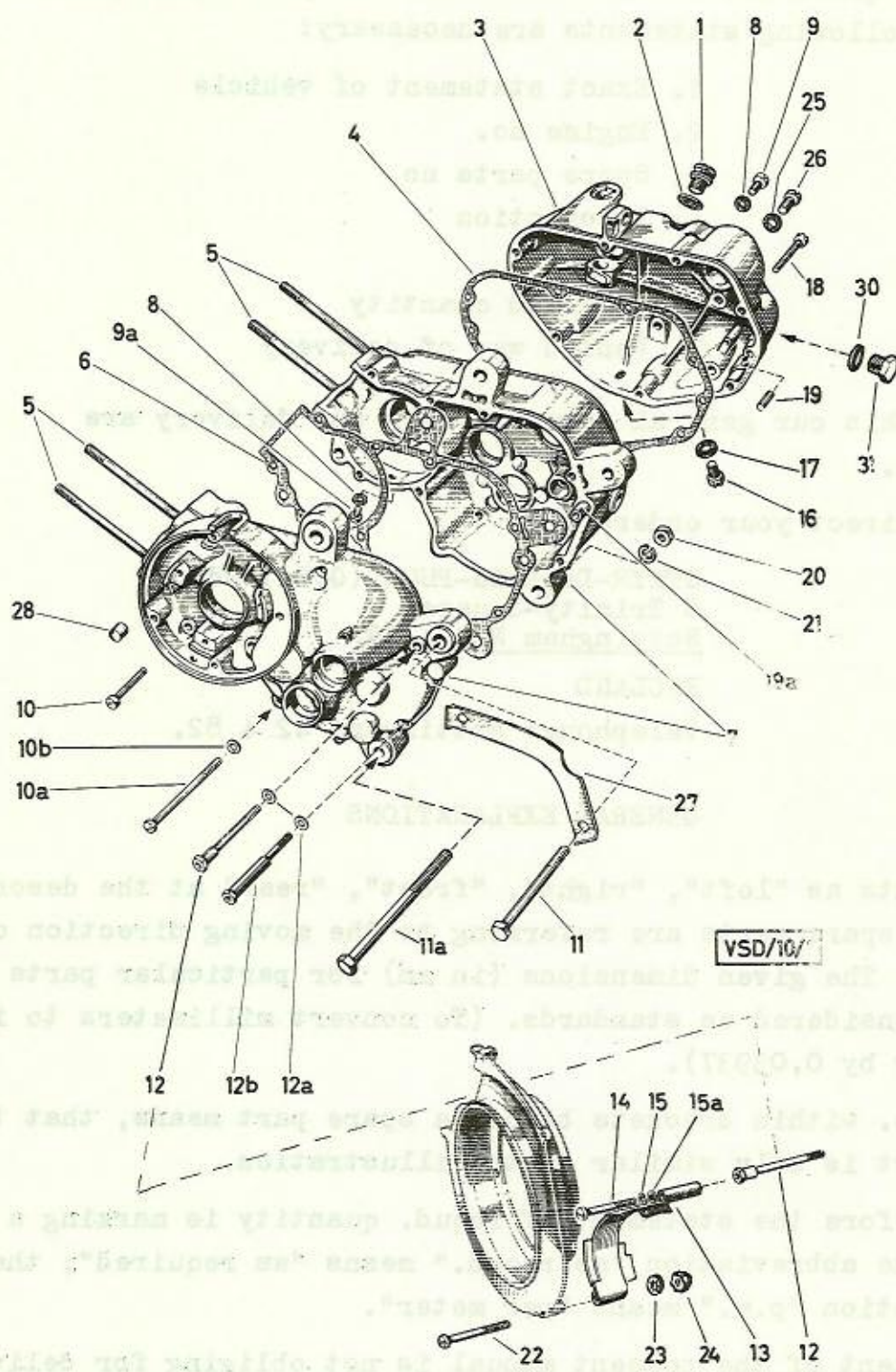
GENERAL EXPLANATIONS

Statements as "left", "right", "front", "rear" at the description of spare parts are referring to the moving direction of vehicle. The given dimensions (in mm) for particular parts have to be considered as standards. (To convert millimeters to inches, multiply by 0,03937).

A ref.no. within brackets before a spare part means, that the said part is only similar to the illustration.

A "N" before the statement of requd. quantity is marking a standard part. The abbreviation "as requd." means "as required"; the abbreviation "p.m." means "per meter".

The content of the present manual is not obliging for delivery and equipment of vehicle.



Ref. No.	Part No.	Description	Required No.		Note
			Vers.A ^x	Vers.B ^{xx}	
1	364.1.10.660.1	Oil filler plug	1	1	
2	27071	Seal washer A10x14 DIN 7603	N 1	1	
3	360.5.10.035.1	Crankcase cover right	1	-	
3	360.5.10.235.1	Crankcase cover right	-	1	
4	050.1.1049	Crankcase cover gasket	1	1	
5	050.1078	Stud bolt M6, 103 long	4	4	
6	050.10.1031 →	Crankcase gasket <u>J28.1.10.731.1</u>		1	
7	360.1.10.032.0	Crankcase complete	1	1	
8	24365	Seal washer A6x12 DIN 7603	N 2	2	
9	900.1305	Fillister head screw M6x8 DIN 84 for oil control	N 1	1	
9a	25403	Hexagon head screw M6x8 DIN 933 for crankcase breathing	N 1	1	
10	900.1319	Fillister head screw M6x35 DIN 84	} for crank- case N 6	6	
10a	900.1544	Fillister head screw M6x80 DIN 84			} assem- bly N 2
10b	901.3925	Washer AL11/6/2)	2	2	
11	900.1136	Hexagon head screw M8x1x65 DIN 960-8G	N 3	2	
11a	900.1039	Hexagon head screw M8x1x70 DIN 960-8G	N -	1	
12	050.2.1076	Screw (M6, 50 long)	1	1	
12a	24804	Washer 6,4 DIN 433	N 2	2	
12b	350.1.10.030.1	Screw (M6, 90 long)	1	1	
13	350.7.10.092.2	Chain safety bow	1	1	
14	900.1308	Fillister head screw AM5x30 DIN 84	N 1	1	
15	29190	Spring ring B5 DIN 127	N 1	1	
15a	24803	Washer 5,3 DIN 433	N 1	1	
16	901.1053	Hexagon head screw M8x10 Sz DIN 933 for oil drain plug	N 1	1	

Vers.A^x for models with crank
 Vers.B^{xx} for models with kickstarter

./o

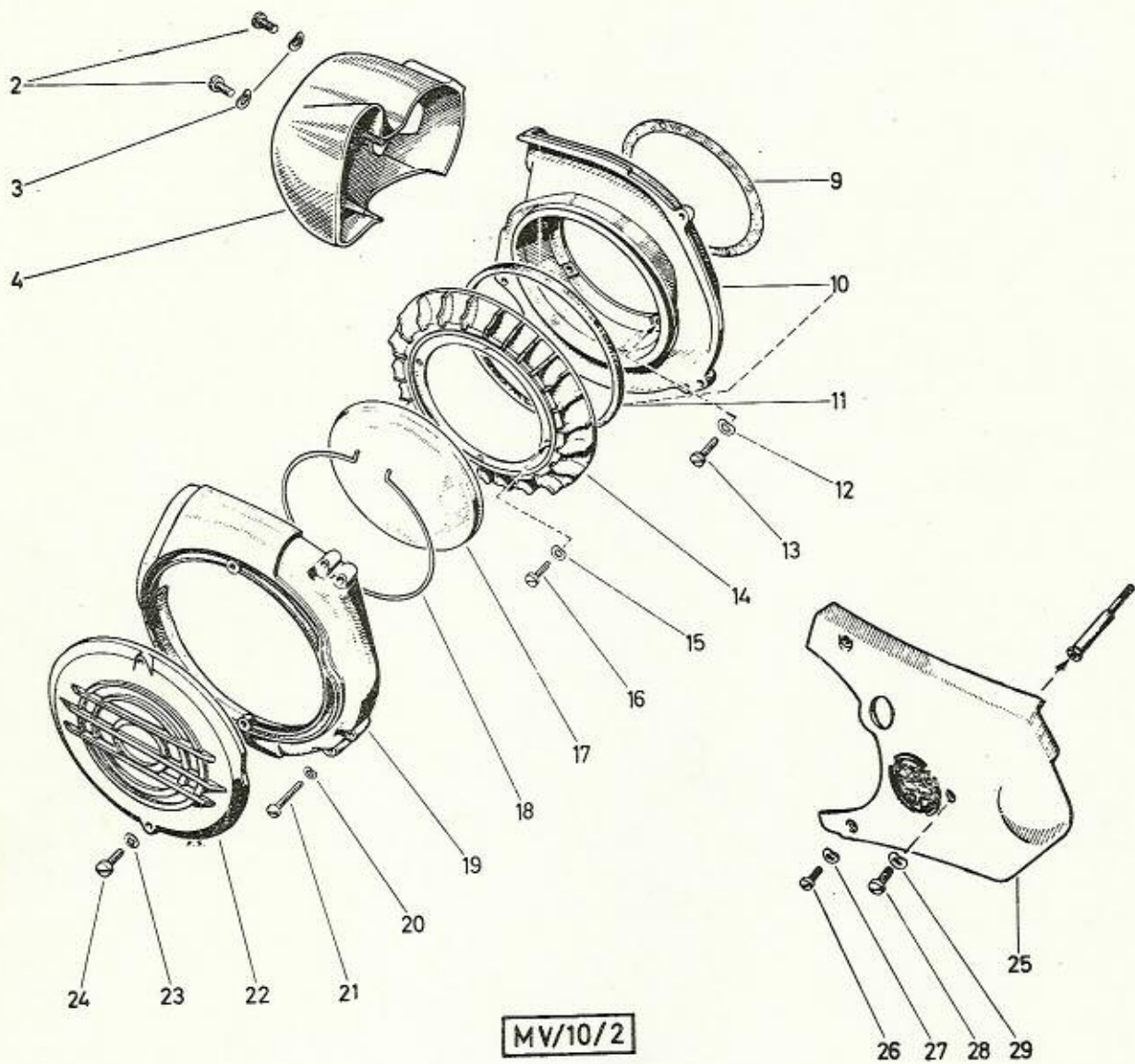
Ref. No.	Part No.	Description	Required No.		Note
			Vers.A ^x	Vers.B ^{xx}	
17	26482	Seal washer A8x14 DIN 7603	N 1	1	
18	900.1206	Fillister head screw M6x30 DIN 84 for crankcase cover	N 6	6	
		900.1319	Fillister head screw M6x35 DIN 84 for crankcase cover	N 1	1
19	900.4810	Cylindrical pin 6h8x18 DIN 7	N 2	2	
19a	050.10.1054	Spacer	2	2	
20	900.2021	Hexagon nut M8x1 DIN 934 - 6S	N 3	3	
21	26819	Spring ring B8 DIN 127	N 1	1	
22	901.1302	Fillister head screw M5x35 DIN 84	N 1	1	
23	900.3257	Serrated lock washer J5,3 DIN 6798	N 1	1	
24	900.2105	Hexagon nut M5 DIN 934	N 1	1	
25	26482	Seal washer A8x14 DIN 7603	N 1	-	
26	900.1512	Lens head screw AM8x10, DIN 85	N 1	-	
27	050.1.1096	Locking plate for nuts	1	1	
28	050.10.1088	Rubber plug for crank- case 12,5 mm dia., 10,5 long	2	2	

Vers.A^x for models with crank

Vers.B^{xx} for models with kickstarter



MADE IN U.S.A.

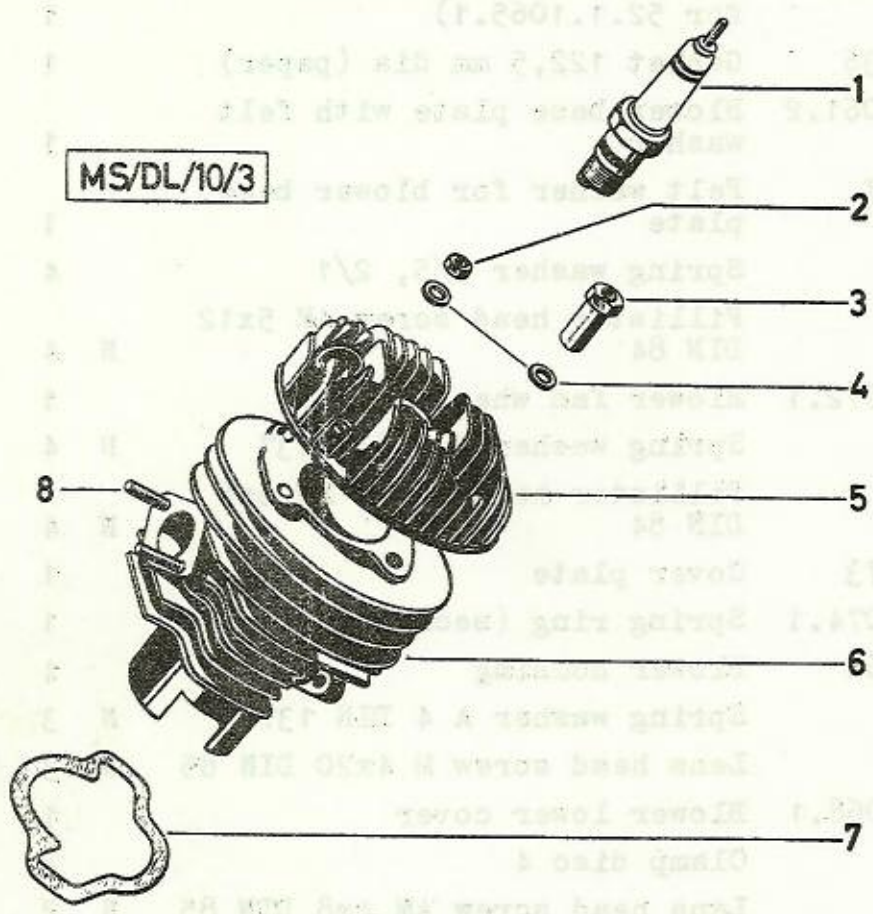


Ref. No.	Part No.	Description	Requd.No.	Note
2	900.1514	Lens head screw M 6x10 DIN 85	N 2	
3	900.3213	Spring washer B6 DIN 137	N 2	
4	364.1.10.065.1	Blower hood (replacement for 52.1.1065.1)	1	
9	050.10.1036	Gasket 122,5 mm dia (paper)	1	
10	350.4.10.061.2	Blower base plate with felt washer	1	
11	050.1.1087	Felt washer for blower base plate	1	
12	900.3218	Spring washer 9/5, 2/1	4	
13	23099	Fillister head screw AM 5x12 DIN 84	N 4	
14	350.4.10.072.1	Blower fan wheel	1	
15	900.3205	Spring washer A 5 DIN 137	N 4	
16	1426	Fillister head screw AM 5x8 DIN 84	N 4	
17	050.10.1073	Cover plate	1	
18	350.1.10.074.1	Spring ring (securing ring)	1	
19	050.10.1062	Blower housing	1	
20	900.3202	Spring washer A 4 DIN 137	N 3	
21	900.1520	Lens head screw M 4x20 DIN 85	N 3	
22	368.1.10.068.1	Blower lower cover	1	
23	900.3964	Clamp disc 4	2	
24	900.1543	Lens head screw AM 4x8 DIN 85	N 2	
25	350.2.10.164.1	Fairing plate	1	
26	900.1506	Lens head screw M 4x12 DIN 85	N 2	
27	900.3202	Spring washer A 4 DIN 137	N 2	
28	27157	Lens head screw M 5x20 DIN 85	N 1	
29	900.3205	Spring washer A 5 DIN 137	N 1	

Part No.	Description	Head No.	Note
----------	-------------	----------	------

1	Spark plug		
2	Washer		
3	Pin		
4	Washer		
5	Blower head assembly		
6	Blower head assembly		
7	Blower lower cover		
8	Blower head assembly		

MS/DL/10/3



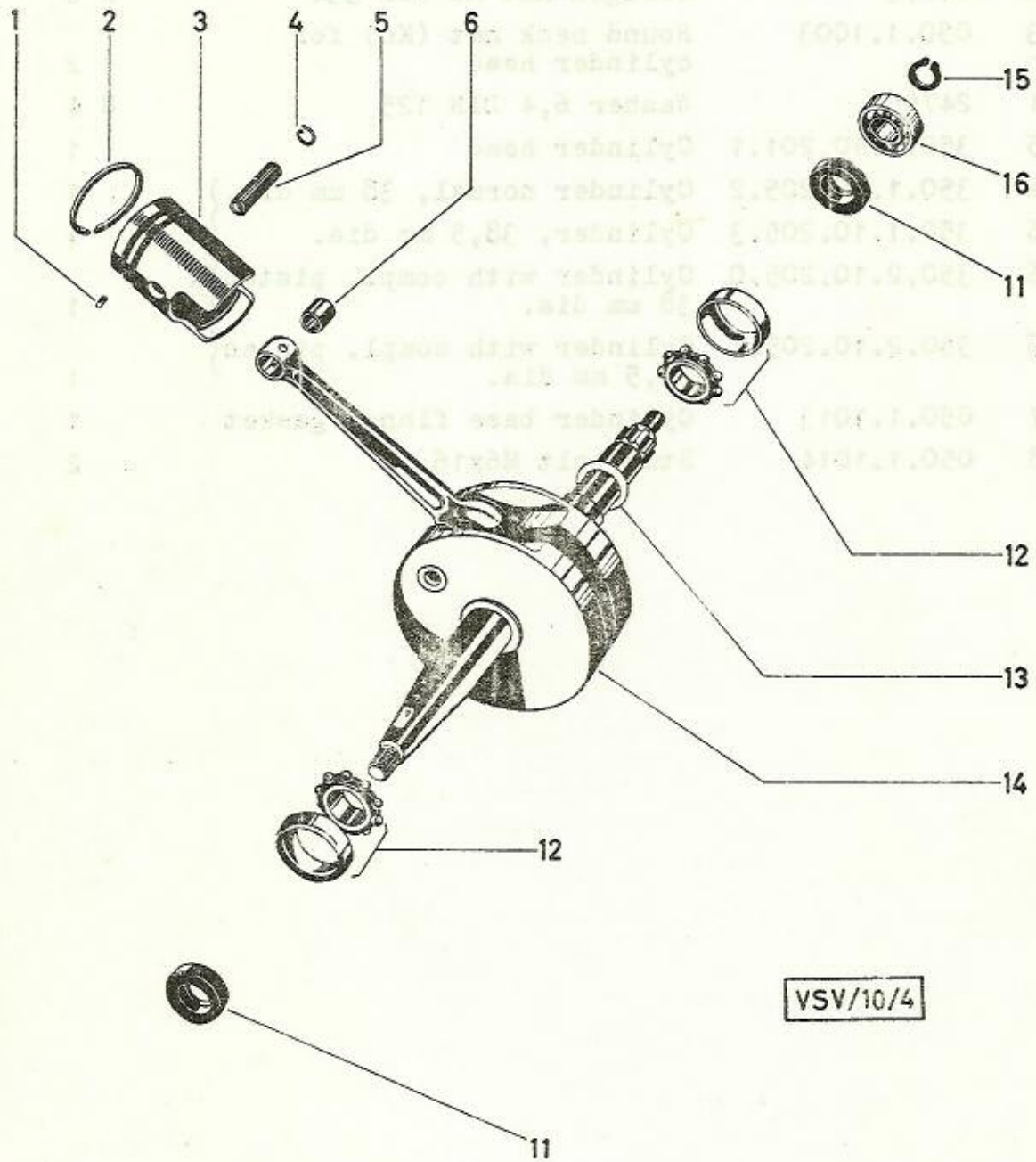
Ref. No.	Part No.	Description	Requd.No.	Note
1	23733	Spark plug	1	
2	24773	Hexagon nut M6 DIN 934	N 2	
3	050.1.1003	Round neck nut (M6) for cylinder head	2	
4	24795	Washer 6,4 DIN 125	N 4	
5	350.1.10.201.1	Cylinder head	1	
6	350.1.10.205.2	Cylinder normal, 38 mm dia.)	1	
6	350.1.10.205.3	Cylinder, 38,5 mm dia.	1	
6	350.2.10.205.0	Cylinder with compl. piston } 38 mm dia.	1	x
6	350.2.10.205.6	Cylinder with compl. piston } 38,5 mm dia.	1	
7	050.1.1013	Cylinder base flange gasket	1	
8	050.1.1014	Stud bolt M6x16	2	

)x We suggest to store only cylinders with compl. pistons.

Bezeichnung

Bezeichnung

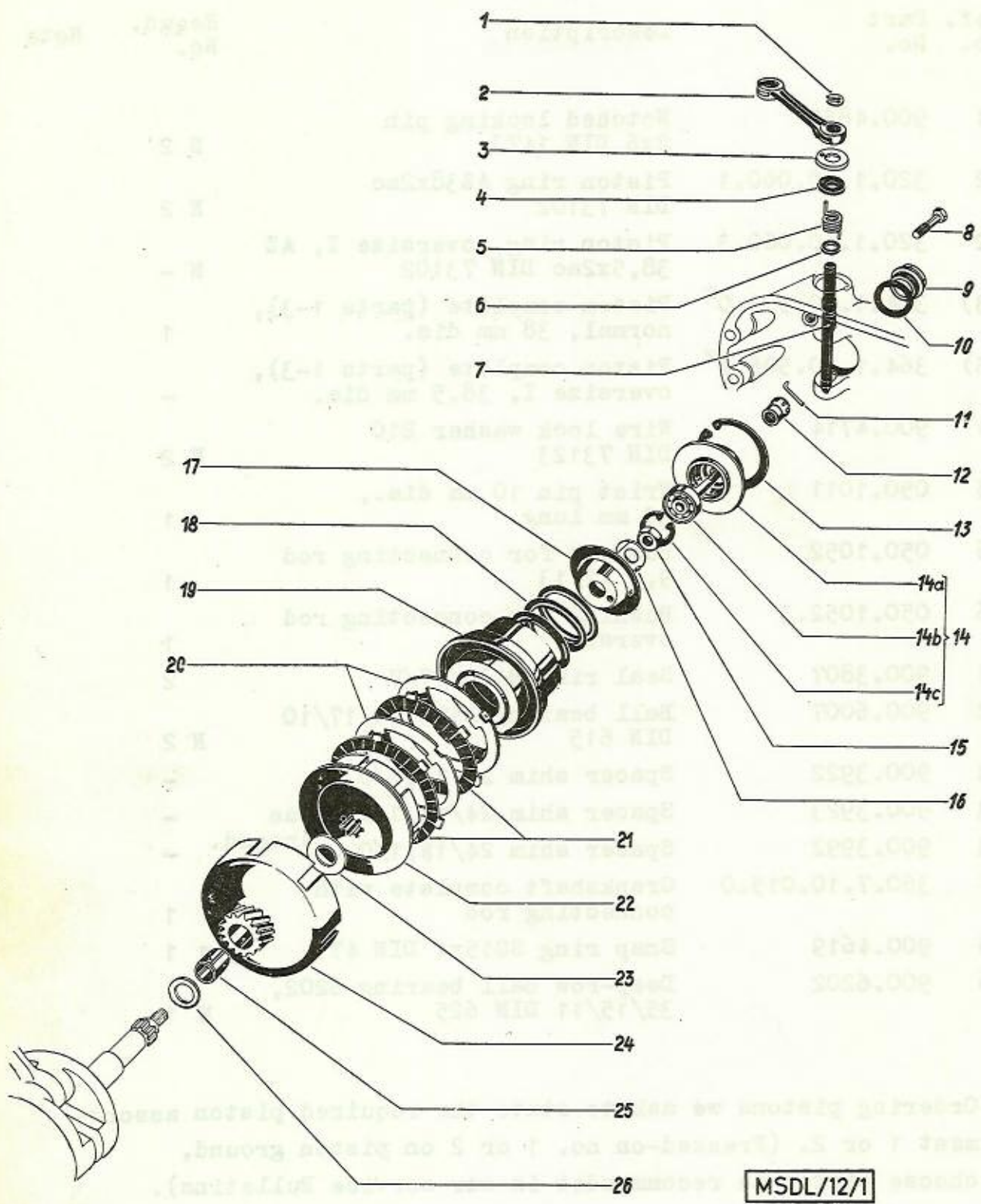
Ref. No.



VSV/10/4

Ref. No.	Part No.	Description	Requd. No.	Note
1	900.4855	Notched locking pin 2x6 DIN 1473	N 2	
2	320.1.10.060.1	Piston ring AZ38x2ac DIN 73102	N 2	
2	320.1.10.060.3	Piston ring, oversize I, AZ 38,5x2ac DIN 73102	N -	
(3)	364.1.10.506.0 ^x	Piston complete (parts 1-3), normal, 38 mm dia.	1	
(3)	364.1.10.506.4 ^x	Piston complete (parts 1-3), oversize I, 38,5 mm dia.	-	
4	900.4714	Wire lock washer B10 DIN 73123	N 2	
5	050.1011	Wrist pin 10 mm dia., 32 mm long	1	
6	050.1052	Bushing for connecting rod 9,4/12/13	1	
6	050.1052.3	Bushing for connecting rod oversize	1	
11	900.3807	Seal ring BA35/17/7	2	
12	900.6007	Ball bearing L17a 40/17/10 DIN 615	N 2	
13	900.3922	Spacer shim 24/18,1/0,1	-	
13	900.3923	Spacer shim 24/18,1/0,2	-	} as requd.
13	900.3992	Spacer shim 24/18,1/0,05	-	
14	360.7.10.015.0	Crankshaft complete with connecting rod	1	
15	900.4619	Snap ring SG15x1 DIN 471	N 1	
16	900.6202	Deep-row ball bearing 6202, 35/15/11 DIN 625	N 1	

x Ordering pistons we ask to state the required piston assortment 1 or 2. (Pressed-on no. 1 or 2 on piston ground, choose piston as recommendet in our service Bulletins).



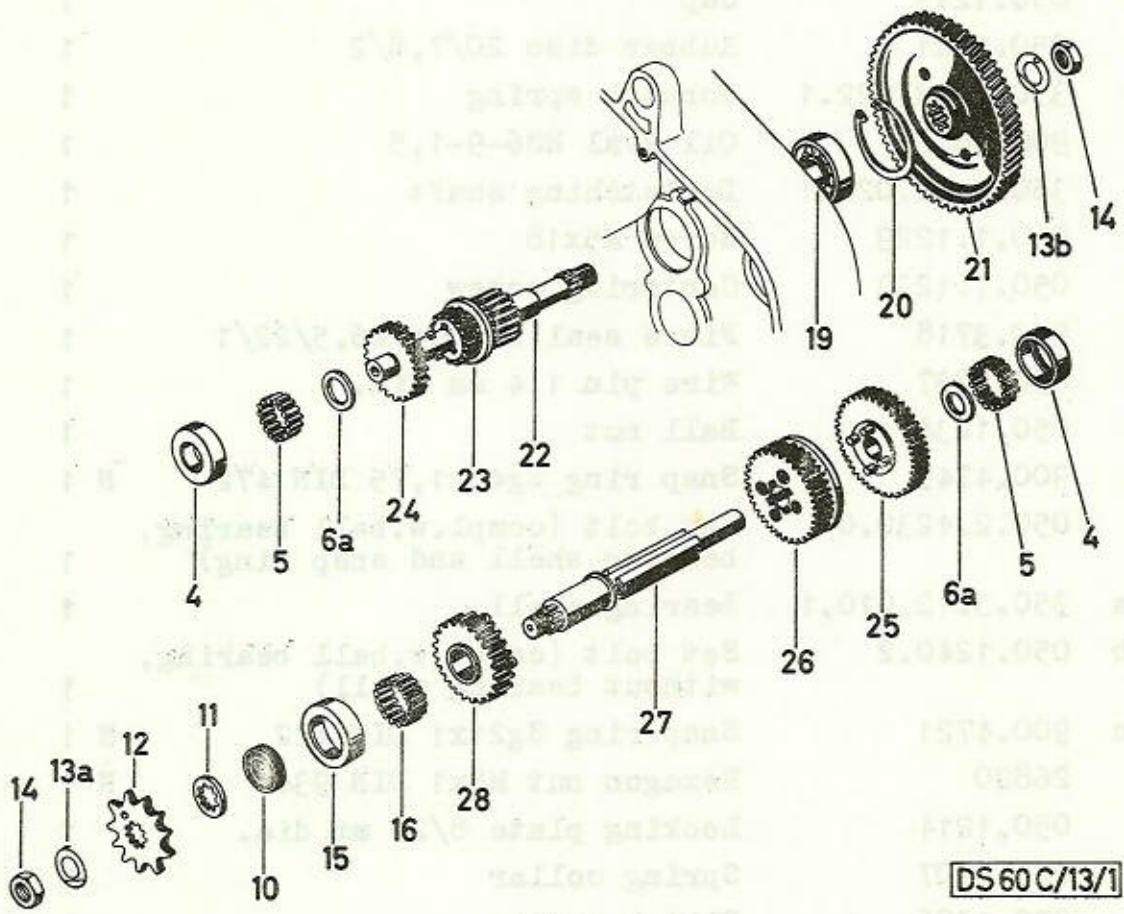
MSDL/12/1

Ref. No.	Part No.	Description	Requd. No.	Note
1	900.4606	Circlip 6 DIN 6799	N 1	
2	050.2.1231	Declutching lever	1	
3	050.1219	Cap	1	
4	050.1221	Rubber disc 20/7,8/2	1	
5	350.2.12.022.1	Torsion spring	1	
6	900.3883	Oil seal RS6-9-1,5	1	
7	350.2.12.028.1	Declutching shaft	1	
8	050.1.1229	Screw M5x18	1	
9	050.1.1233	Centering screw	1	
10	900.3718	Fibre seal washer 26,5/22/1	1	
11	050.1237	Wire pin 1,4 mm dia.	1	
12	050.1234	Ball nut	1	
13	900.4745	Snap ring Sg45x1,75 DIN 472	N 1	
14	050.2.1230.0	Set bolt (compl.w.ball bearing, bearing shell and snap ring)	1	
14a	350.3.12.010.1	Bearing shell	1	
14b	050.1240.2	Set bolt (compl.w.ball bearing, without bearing shell)	1	
14c	900.4721	Snap ring Sg21x1 DIN 472	N 1	
15	26820	Hexagon nut M8x1 DIN 934	N 1	
16	050.1214	Locking plate 8/20 mm dia.	1	
17	050.1207	Spring collar	1	
18	050.1206	Clutch spring	1	
19	050.1205	Spring cage	1	
20	050.1212	Interior clutch disc	2	
21	050.1224.2	Exterior clutch disc (with friction lining)	2	
22	050.1204	Clutch hub	1	
23	050.1215	Thrust washer 26/15/1	1	
24	360.1.12.002.2	Clutch housing (18 teeth)	1	
25	050.1211	Bearing bushing 17/15/16,3	1	
26	050.1213	Thrust washer 22/15/1,7	1	

Part No. Description

Part No. Description

Part No. Description

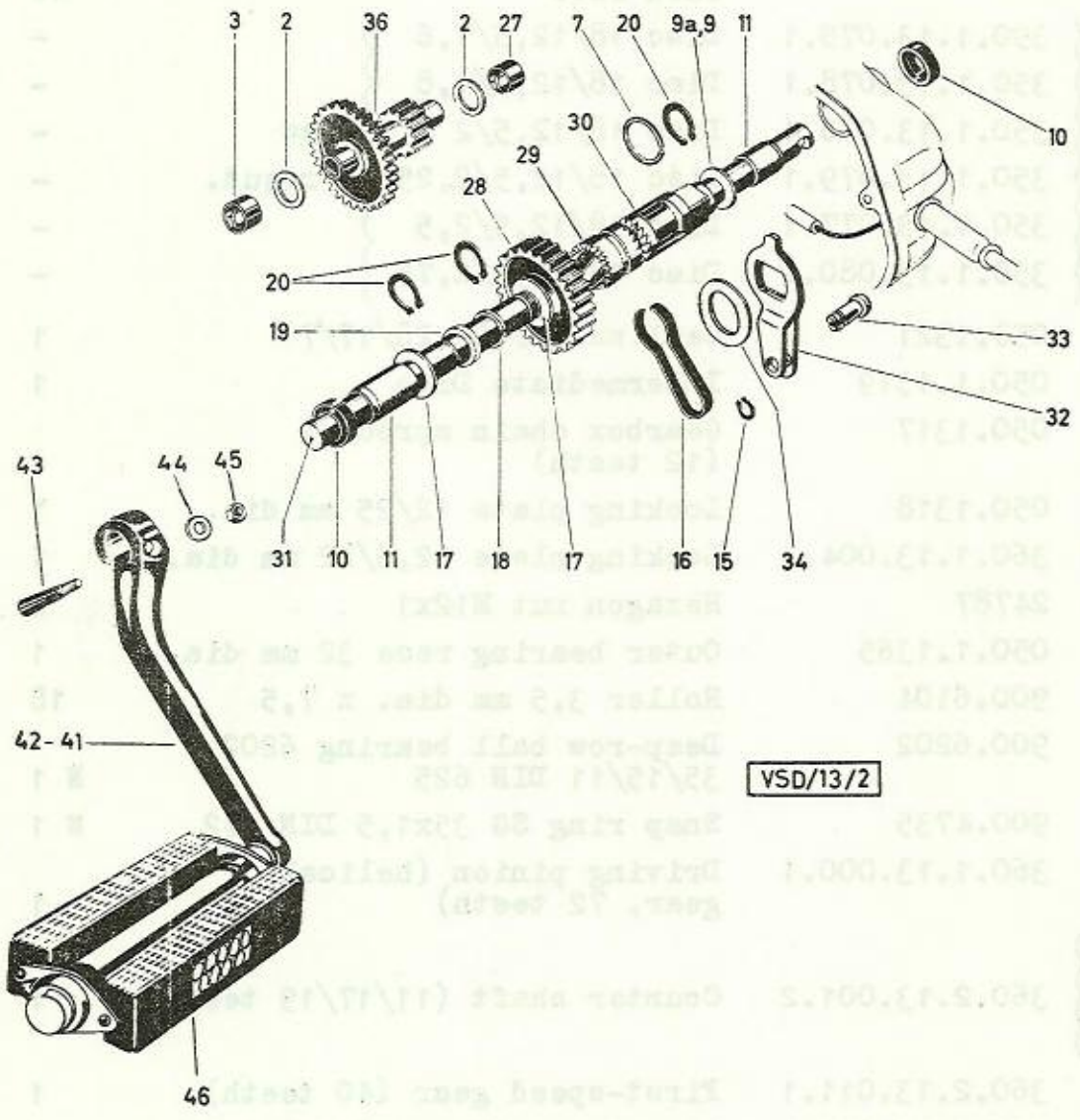


Ref. No.	Part No.	Description	Requd. No.	Note
4	050.1.1310	Roller race 28 mm dia. (for main and counter shafts)	2	
5	900.6104	Roller 3,5x7,5 (14 rollers to each race)	28	
6a	{ 350.1.13.075.1	Disc 18/12,5/1,6	-	
	{ 350.1.13.078.1	Disc 18/12,5/1,8	-	
	{ 350.1.13.076.1	Disc 18/12,5/2	-	as
	{ 350.1.13.079.1	Disc 18/12,5/2,25	-	requd.
	{ 350.1.13.077.1	Disc 18/12,5/2,5	-	
	{ 350.1.13.080.1	Disc 18/12,5/2,75	-	
10	050.1321	Seal washer BA 28/17/7	1	
11	050.1.1319	Intermediate Disc	1	
12	050.1317	Gearbox chain sprocket (12 teeth)	1	
13a	050.1318	Locking plate 12/25 mm dia.	1	
13b	360.1.13.004.1	Locking plate 12,5/22 mm dia.	1	
14	24787	Hexagon nut M12x1	2	
15	050.1.1365	Outer bearing race 32 mm dia.	1	
16	900.6104	Roller 3,5 mm dia. x 7,5	18	
19	900.6202	Deep-row ball bearing 6202 35/15/11 DIN 625	N 1	
20	900.4735	Snap ring SG 35x1,5 DIN 472	N 1	
21	360.1.13.000.1	Driving pinion (helical gear, 72 teeth)	1	
22)	{ 360.2.13.001.2	Counter shaft (11/17/19 teeth)	1	
23				
24				
25	360.2.13.011.1	First-speed gear (40 teeth)	1	
26	360.1.13.012.1	Second-speed gear (34 teeth)	1	
27	360.1.13.020.1	Main shaft, 114 long	1	
28	360.1.13.013.1	Third-speed gear (24 teeth)	1	

Part No. 900.6101

Description

Part No. 900.6101



VSD/13/2

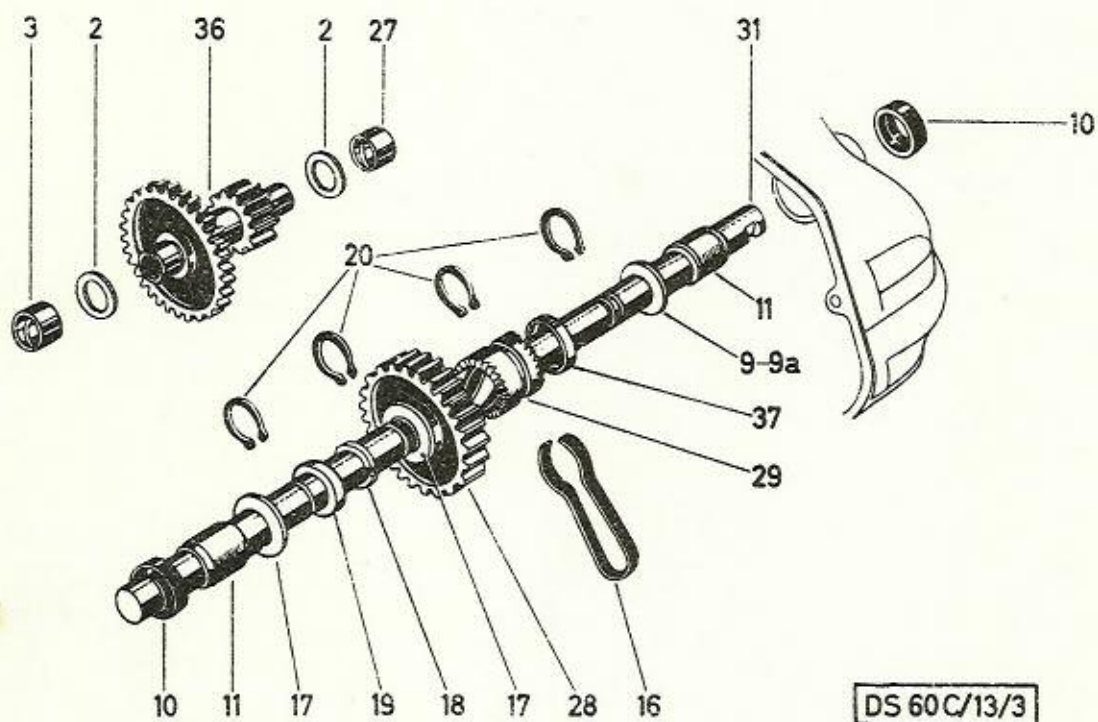
Ref. No.	Part No.	Description	Requid. No.	Note
2	050.1329	Thrust washer 20,5/14/1,9	-	
	050.1329.2	Thrust washer 20,5/14/2	-	as
	050.1329.3	Thrust washer 20,5/14/2,1	-	requid.
	050.1329.4	Thrust washer 20,5/14/2,4	-	
3	050.1333	Bearing bushing 19/14/9,5	1	
7	900.3221	Spring ring 2 mm dia.x 30 mm dia. for claw collar	1	
9	050.4.1353	Thrust washer 26/16,2/1	1	
9a	900.3922	Spacer shim 24/18,1/0,1	-	as
	900.3923	Spacer shim 24/18,1/0,2	-	requid.
	900.3924	Spacer shim 24/17,1/0,5	-	
10	050.1335	Rubber seal ring BAOF 24/16/7	2	
11	350.3.13.054.1	Bearing bushing 20/16/17	2	
15	900.4610	Snap ring Sg10x1 DIN 471	N 1	
16	050.1.1334	Brake spring for driver	1	
17	050.1343	Thrust washer 26/15/2	2	
18	350.3.13.051.1	Spring ring	1	
19	350.3.13.052.1	Catching ring	1	
20	900.4616	Snap ring SG16x1 DIN 471	N 4	
27	360.1.13.033.1	Bushing 17/14/10 for countershaft, right	1	
28	364.1.13.031.1	Starter gear (31/20 teeth)	1	
29	360.1.13.027.1	Driver (20 teeth), 24 long	1	
30	360.1.13.037.1	Claw collar (20 teeth), 24 mm long	1	
31	360.3.13.032.1	Pedal shaft (starter shaft), 280 long	1	
32	350.2.13.038.2	Brake lever	1	
33	350.2.13.047.1	Clevis bolt	1	
34	900.3987	Washer 38/27/2,5	1	
36	364.1.13.030.2	Counter shaft (32 and 15 teeth)	1	

Puch VS 50 D England 7. CRANKS, PEDALS, STARTERMECHANISM (cont'ed)
 (Version A for models with crank)

Ref. Part No.	Part No.	Description	Requd. No.	Note
41	050.1341	Crank l.h.s.	1	
42	050.1340	Crank r.h.s.	1	
43	605.1313	Cotter for crank	2	
44	900.3926	Washer for crank 14/6,5/2	2	
45	900.2909	Hexagon nut 1/4" 26 gear/inch	2	
46	600.3.18.035.0	Pedal compl.		per pair



20 000 000



DS 60C/13/3

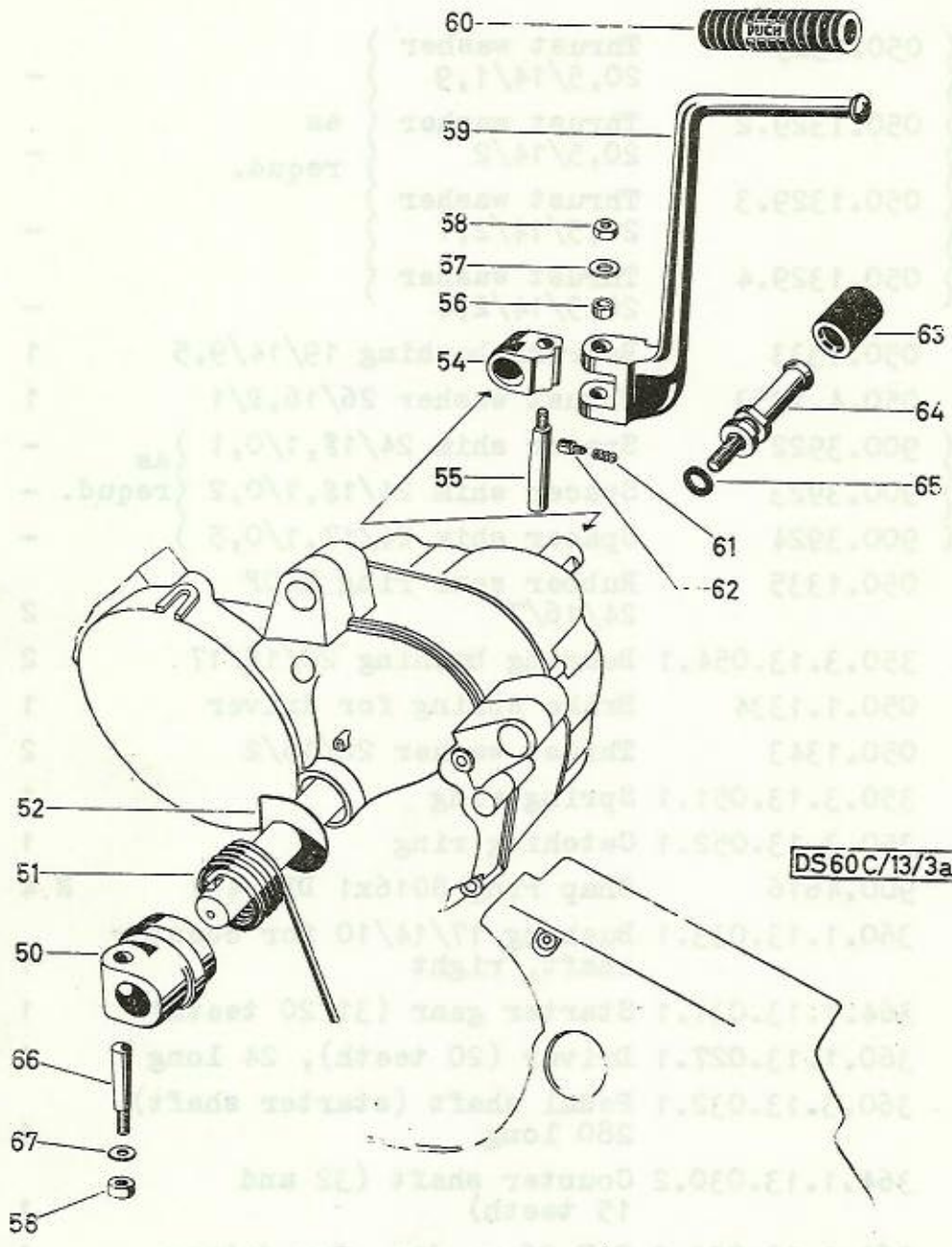
(Version B for models with kickstarter)

Ref. No.	Part No.	Description	Requd. No.	Note
2	{ 050.1329	Thrust washer 20,5/14/1,9	-	
	{ 050.1329.2	Thrust washer 20,5/14/2	-	as
	{ 050.1329.3	Thrust washer 20,5/14/2,1	-	requd.
	{ 050.1329.4	Thrust washer 20,5/14/2,4	-	
3	050.1333	Bearing bushing 19/14/9,5	1	
9	050.4.1353	Thrust washer 26/16,2/1	1	
9a	{ 900.3922	Spacer shim 24/18,1/0,1	-	as
	{ 900.3923	Spacer shim 24/18,1/0,2	-	requd.
	{ 900.3924	Spacer shim 24/17,1/0,5	-	
10	050.1335	Rubber seal ring BAOF 24/16/7	2	
11	350.3.13.054.1	Bearing bushing 20/16/17	2	
16	050.1.1334	Brake spring for driver	1	
17	050.1343	Thrust washer 26/15/2	2	
18	350.3.13.051.1	Spring ring	1	
19	350.3.13.052.1	Catching ring	1	
20	900.4616	Snap ring SG16x1 DIN 471	N 4	
27	360.1.13.033.1	Bushing 17/14/10 for counter shaft, right	1	
28	364.1.13.031.1	Starter gear (31/20 teeth)	1	
29	360.1.13.027.1	Driver (20 teeth), 24 long	1	
31	360.3.13.032.1	Pedal shaft (starter shaft), 280 long	1	
36	364.1.13.030.2	Counter shaft (32 and 15 teeth)	1	
37	364.1.13.023.1	CAP 26 mm dia. for driver	1	

(Version 2 for models with Klopstange)

Description

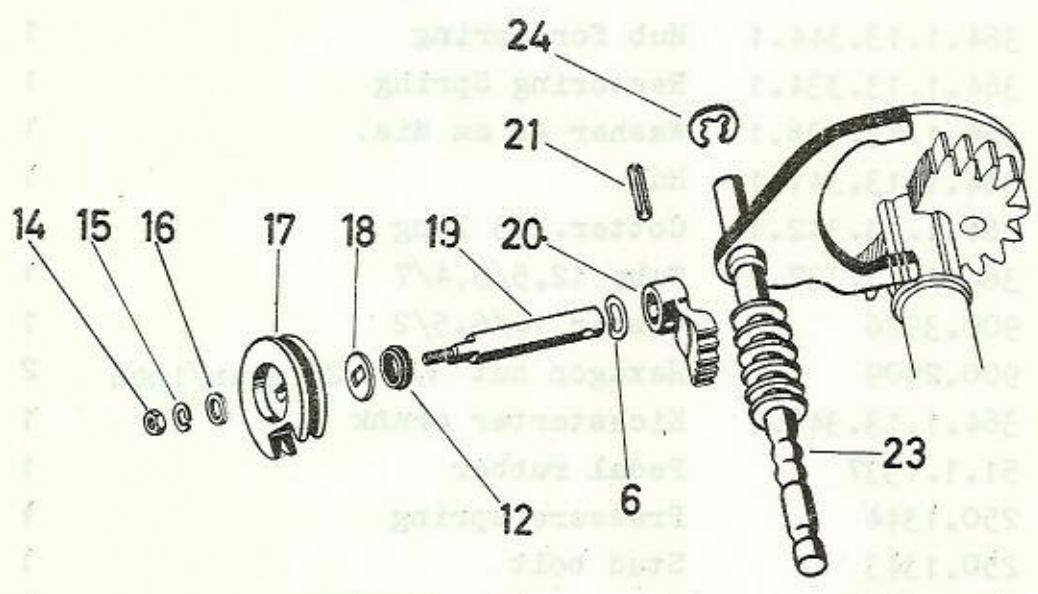
Ref. Part
No.



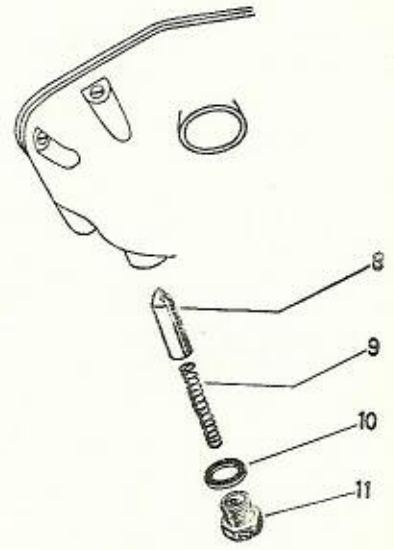
DS60C/13/3a

Ref. No.	Part No.	Description	Requd. No.	Note
50	364.1.13.344.1	Hub for spring	1	
51	364.1.13.334.1	Restoring Spring	1	
52	364.1.13.336.1	Washer 46 mm dia.	1	
54	364.1.13.341.1	Hub	1	
55	364.1.13.342.1	Cotter, 63 long	1	
56	364.1.13.337.1	Tube 12,5/9,4/7	1	
57	900.3926	Washer 14/6,5/2	1	
58	900.2909	Hexagon nut 1/4" 26 gear/inch	2	
59	364.1.13.340.1	Kickstarter crank	1	
60	51.1.1337	Pedal rubber	1	
61	250.1344	Pressure spring	1	
62	250.1343	Stud bolt	1	
63	51.1.1338	Stop rubber 22/9/25	1	
64	364.1.13.343.1	Stop bolt	1	
65	26482	Seal ring A8x14 DIN 7603	N 1	
- 66	605.1313	Cotter	1	
67	900.3926	Washer 14/6,5/2	1	

Ref. No.	Description	Part No.
----------	-------------	----------



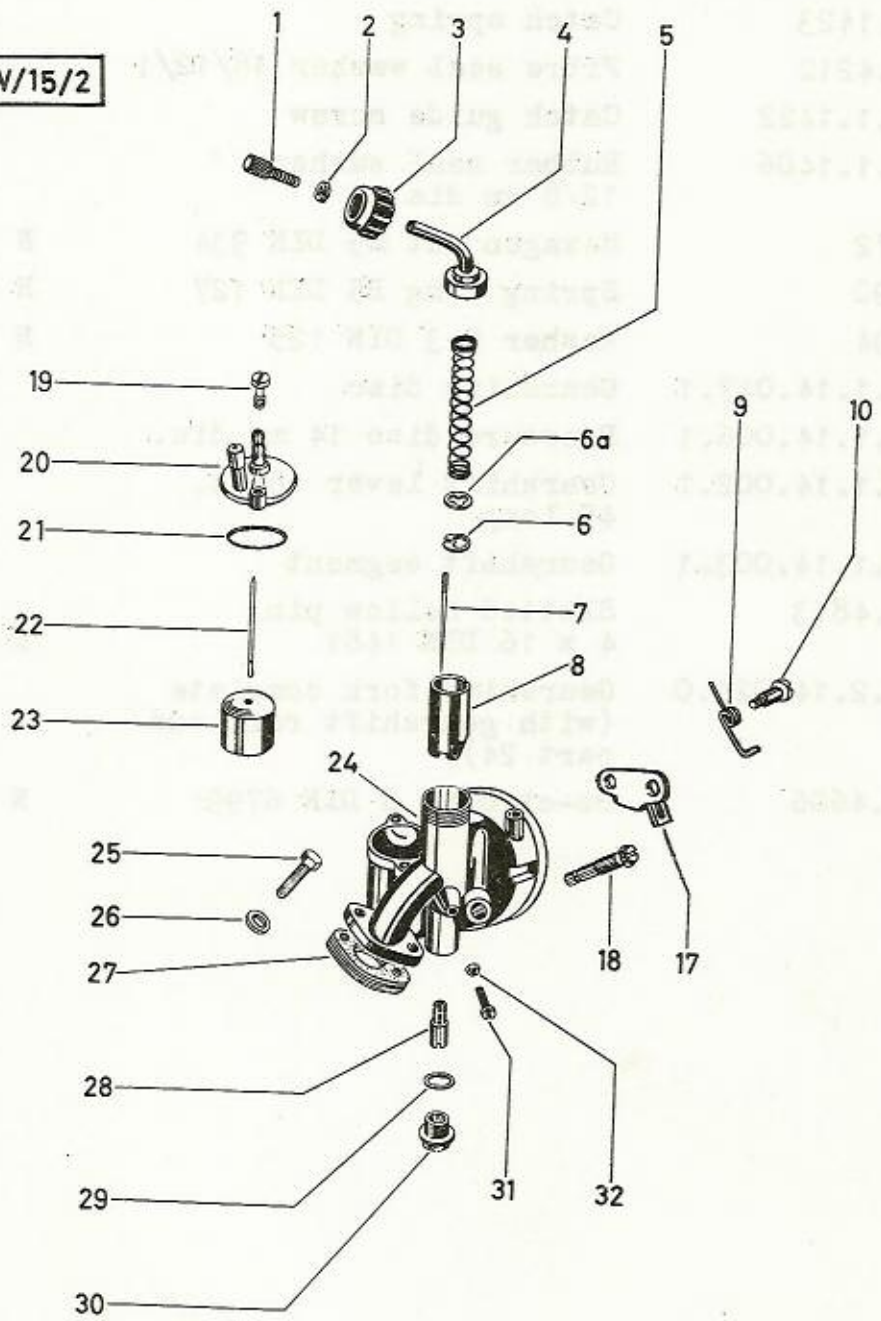
DS 60C/14/0



DS 60C/14

Ref. No.	Part No.	Description	Requd. No.	Note
6	050.1.1426	Spring washer A8	1	
8	050.1.1421	Catch	1	
9	100.1423	Catch spring	1	
10	900.4212	Fibre seal washer 18/12/1	1	
11	050.1.1422	Catch guide screw	1	
12	050.1.1406	Rubber seal washer 12/8 mm dia.	1	
14	24772	Hexagon nut M5 DIN 934	N 1	
15	29190	Spring ring B5 DIN 127	N 1	
16	24794	Washer 5,3 DIN 125	N 1	
17	360.1.14.017.1	Gearshift disc	1	
18	360.1.14.006.1	Pressure disc 14 mm dia.	1	
19	360.1.14.002.1	Gearshift lever shaft, 45 long	1	
20	360.1.14.003.1	Gearshift segment	1	
21	900.4813	Slotted hollow pin 4 x 16 DIN 1481	N 1	
23	360.2.14.025.0	Gearshift fork complete (with gearshift rail and part 24)	1	
24	900.4606	Bz-circlip 6 DIN 6799	N 1	

VZ50V/15/2

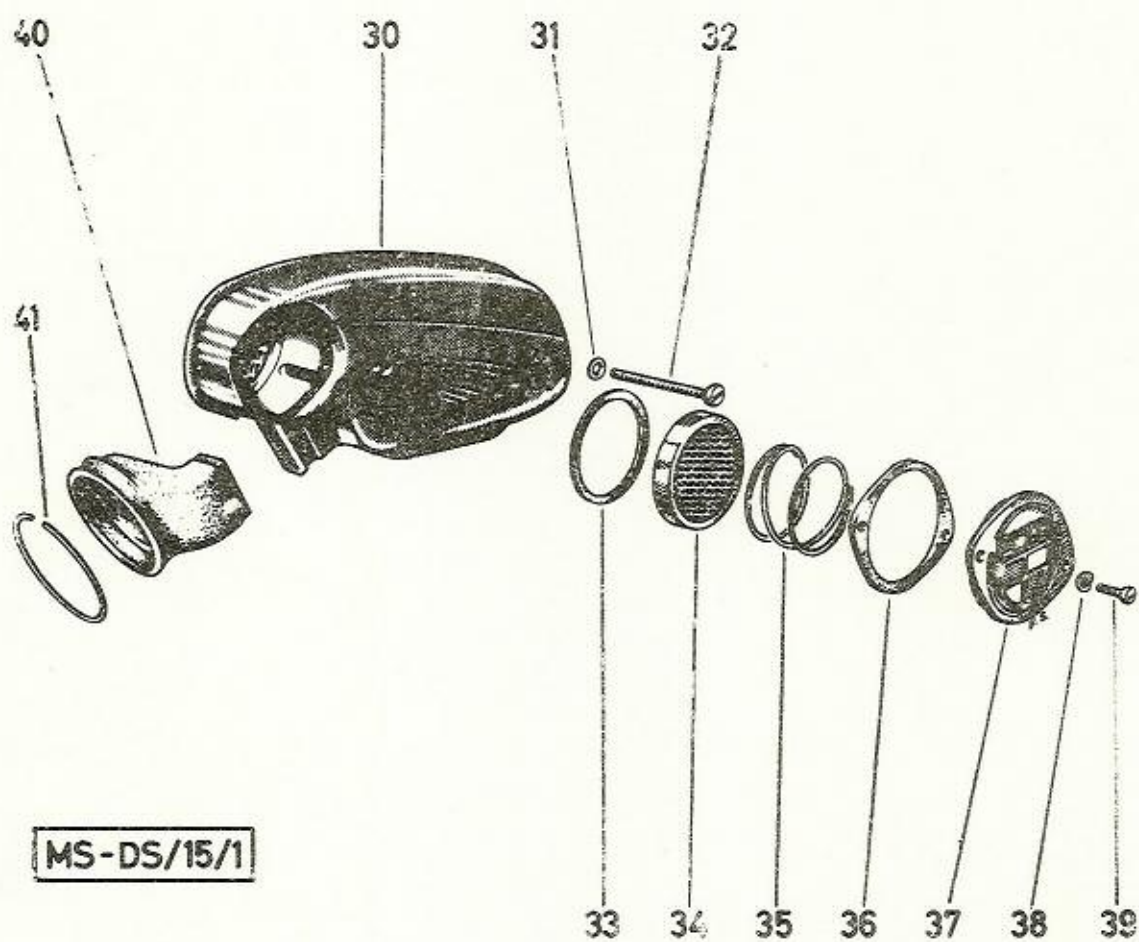


Ref. No.	Part No.	Description	Requd. No.	Note
-	364.1.15.001.0/54	Carburettor compl. with tickler, without air filter BING 1/12/122 I (113), Jet no. 54	1	
1	050.1520	Bowdencable adjusting screw (M5)	1	
2	050.1517	Nut for bowden cable adjusting screw M5	1	
3	050.1519	Screw cover	1	
4	050.1518	Head with tube band	1	
5	050.1531	Thrust spring for throttle	1	
6	050.1513	Clamp spring	1	
6a	350.1.15.014.1	Disc 11 mm dia., 0,5 strong	1	
7	050.1516	Jet needle	1	
8	050.1515	Throttle slide	1	
9	364.1.15.055.1	Torsion spring	1	
10	050.1552	Neck screw	1	
17	364.1.15.053.1	Choke valve	1	
18	050.1509/54	Main jet no. 54	1	
18	050.1509/52	Main jet no. 52	-	} as } requd.
18	050.1509/.. ^x	Main jet no... ^x	-	
19	050.1535	Cap screw	2	
20	364.1.15.032.2	Float chamber cover with tickler	1	
21	050.1536	Float chamber cover gasket	1	
22	050.1530	Float needle	1	
23	050.1525	Float	1	
24	050.10.1501	Carburettor body (outside ventilation)	1	
25	900.1107	Hexagon bolt M6x25 DIN 933	N 2	
26	24804	Washer 6,4 DIN 433	N 2	
27	{ 050.2.1521	Carburettor flange gasket (3 mm thick)	2	
	{ 050.1522	Carburettor flange gasket (Paper, 0,3 mm thick)	3	
28	050.1508	Needle jet	1	

^x Please state jet no !

Puch VS 50 D/DKH England 10. CARBURETTOR (Cont'ed)

Ref. No.	Part No.	Description	Requd. No.	Note
29	27071	Seal washer A10x14 DIN 7603	N 1	
30	050.1523	Screw plug	1	
31	050.1511	Throttle slide stop screw	1	
32	24771	Hexagon nut M4 DIN 934	N 1	
		Washer for powder cable	1	
		Adjusting screw M5	1	
		Boiler cover	1	
		Head with tube bend	1	
		Turned spring for throttle	1	
		Clamp spring	1	
		Disc 11 mm dia., 0.5 mm thick	1	
		Jet needle	1	
		Throttle slide	1	
		Throttle spring	1	
		Back screw	1	
		Choke valve	1	
		Main jet no. 54	1	
		Main jet no. 52	1	
		Main jet no. 50	1	
		Cap screw	1	
		Floot chamber cover with flasket	1	
		Floot chamber cover flasket	1	
		Floot needle	1	
		Floot	1	
		Carburetor body (without ventillation)	1	
		Hexagon bolt M4x5 DIN 913	1	
		Washer 6,4 DIN 913	1	
		Carburetor float flasket (3 mm thick)	1	
		Carburetor float flasket (paper, 0,2 mm thick)	1	
		Needle jet	1	



MS-DS/15/1

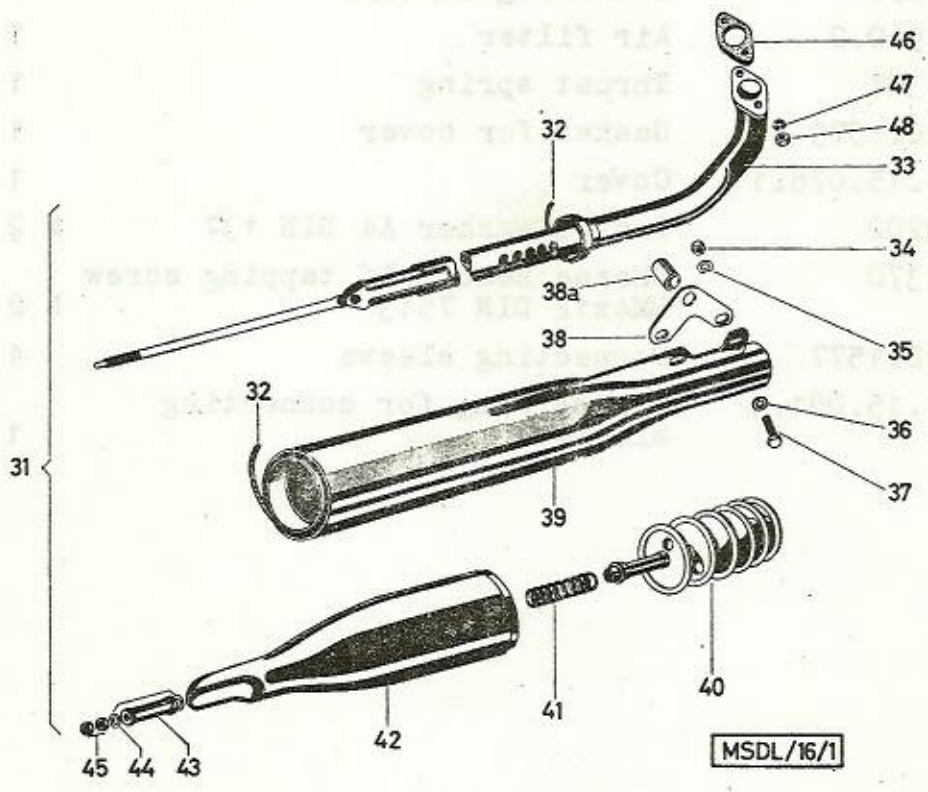
Ref. No.	Part No.	Description	Requd. No.	Note
30	357.1.15.070.0	Intake silencer compl. (with air filter) (with parts 30 and 33 to 39)	1	
31	24794	Plain washer 5,3 DIN 125	N 2	
32	900.1336	Cheese head screw AM5x55 DIN 84N	2	
33	050.1576	Seal ring 52/45/2	1	
34	050.1540.2	Air filter	1	
35	250.1327	Thrust spring	1	
36	050.10.1579	Gasket for cover	1	
37	357.1.15.078.1	Cover	1	
38	900.3202	Curved washer A4 DIN 137	N 2	
39	900.1370	Cheese head self tapping screw BM4x12 DIN 7513	N 2	
40	050.10.1577	Connecting sleeve	1	
41	364.1.15.081.1	Spring ring for connecting sleeve	1	

Part No.

Description

Part No.

Part No.	Description	Part No.
30	Inlet air filter (with air filter)	30
31	(with parts 30 and 32)	31
32	Head cover	32
33	Seal ring	33
34	Air filter	34
35	Thrust spring	35
36	Back cover	36
37	Lower	37
38	Upper	38
39	Head cover	39
40	Head cover	40
41	Head cover	41
42	Head cover	42
43	Head cover	43
44	Head cover	44
45	Head cover	45



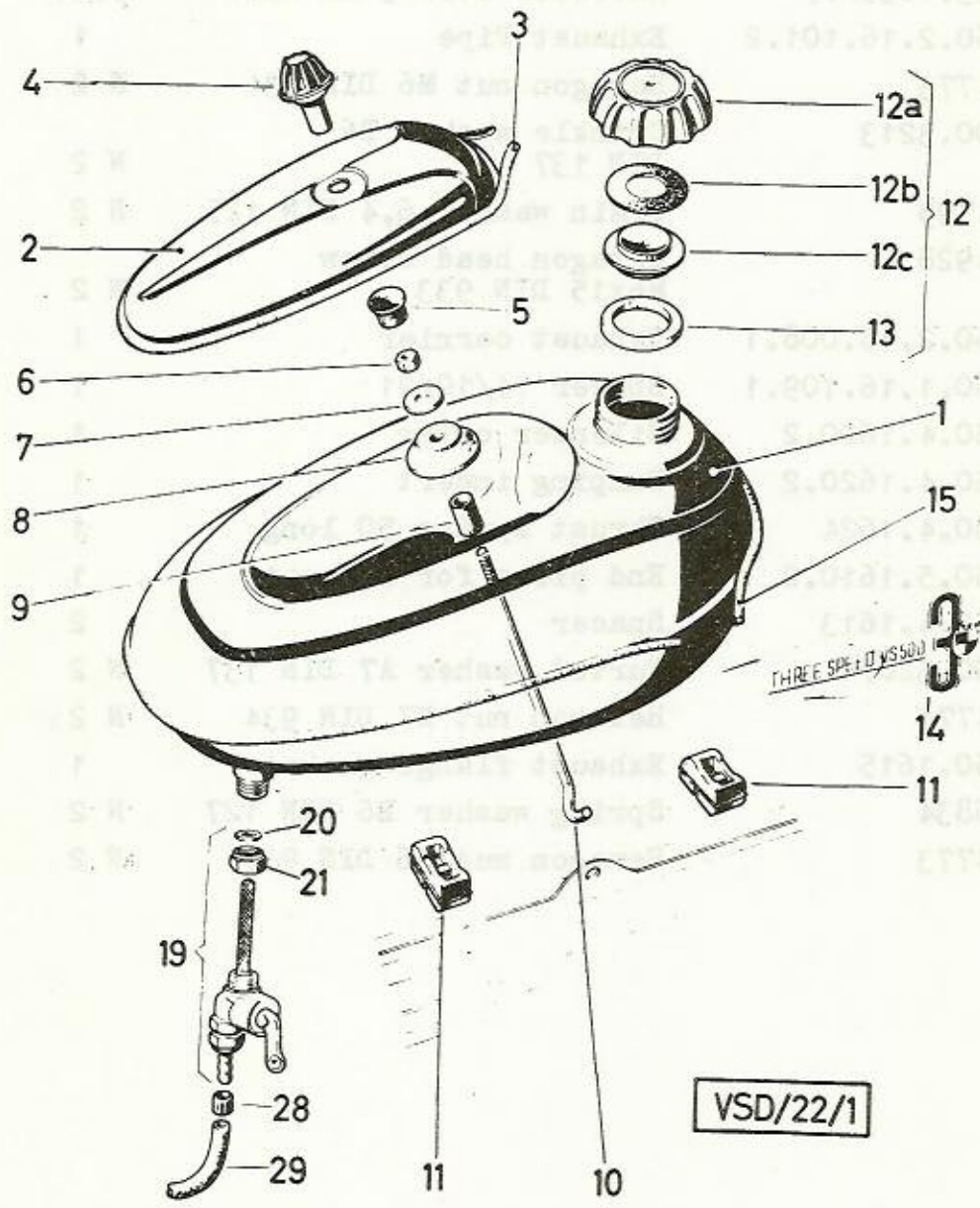
MSDL/16/1

Ref. No.	Part No.	Description	Requd. No.	Note
31	360.2.16.100.0	Exhaust silencer compl.	1	
32	253.1635/07	Asbestos cord 3 mm dia.	p.m.	
33	360.2.16.101.2	Exhaust Pipe	1	
34	24773	Hexagon nut M6 DIN 934	N 2	
35	900.3213	Crinkle washer B6 DIN 137	N 2	
36	24795	Plain washer 6,4 DIN 125	N 2	
37	24928	Hexagon head screw M6x15 DIN 933	N 2	
38	360.2.16.008.1	Exhaust carrier	1	
38a	360.1.16.109.1	Spacer 14/10/21	1	
39	050.4.1600.2	Silencer cover	1	
40	050.4.1620.2	Damping insert	1	
41	050.4.1624	Thrust spring 50 long	1	
42	050.5.1610.2	End piece for exhaust	1	
43	050.4.1613	Spacer	2	
44	900.3207	Curved washer A7 DIN 137	N 2	
45	24774	Hexagon nut M7 DIN 934	N 2	
46	050.1615	Exhaust flange gasket	1	
47	26834	Spring washer B6 DIN 127	N 2	
48	24773	Hexagon nut M6 DIN 934	N 2	

Part No. 1000000000

Accessories

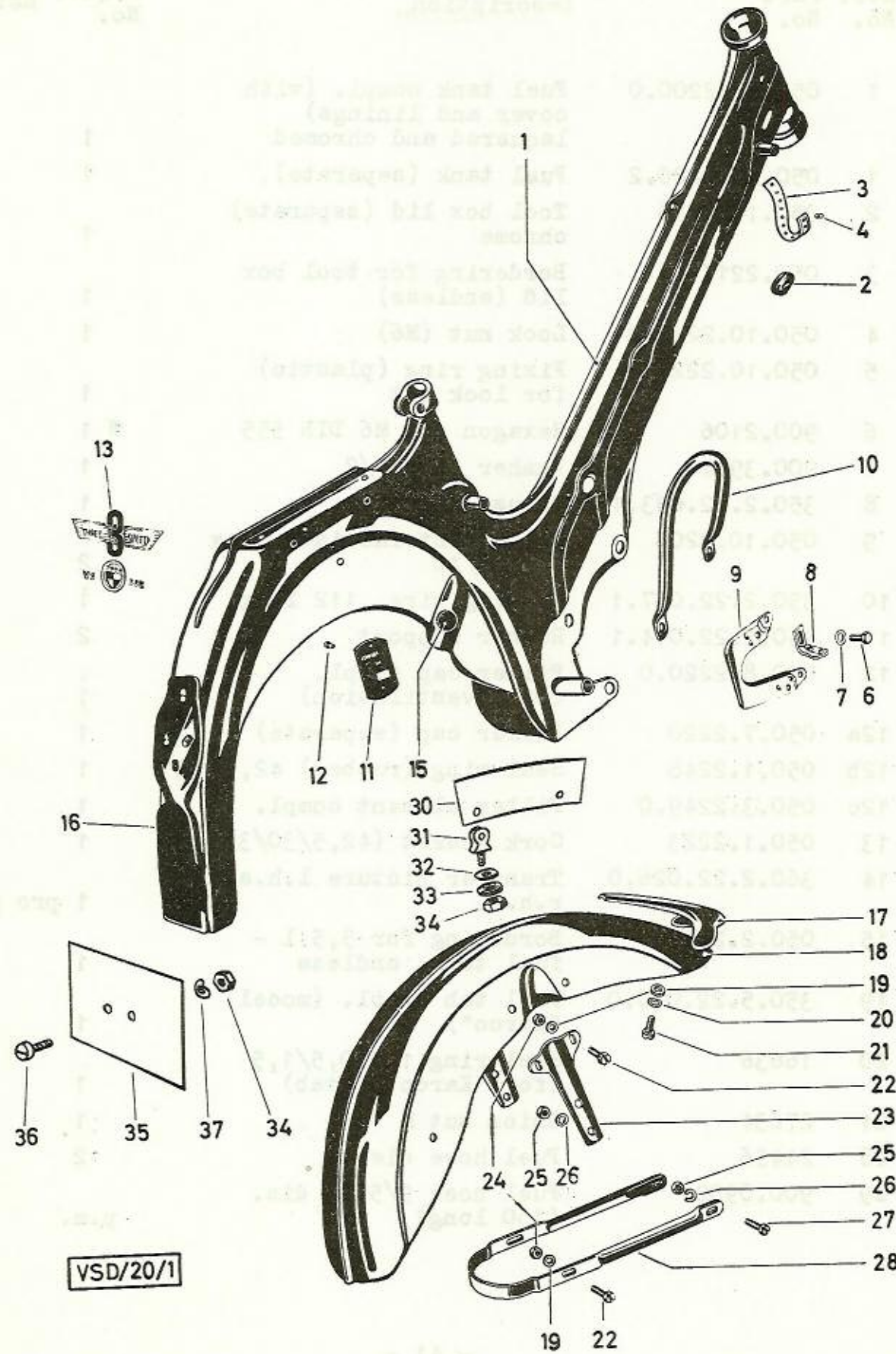
Part No. 1000000000



VSD/22/1

Ref. No.	Part No.	Description	Requd. No.	Note
1	050.10.2200.0	Fuel tank compl. (with cover and linings) laquered and chromed	1	
1	050.10.2200.2	Fuel tank (separate)	1	
2	050.10.2216	Tool box lid (separate) chrome	1	
3	050.2217	Bordering for tool box lid (endless)	1	
4	050.10.2210.2	Lock nut (M6)	1	
5	050.10.2224	Fixing ring (plastic) for lock nut	1	
6	900.2106	Hexagon nut M6 DIN 555	N 1	
7	900.3904	Washer 22/6,5/2	1	
8	350.2.22.033.1	Thrust piece	1	
9	050.10.2206	Rubber intermediate ring 11/6,5/12	2	
10	350.2.22.007.1	Bracing wire, 112 long	1	
11	350.2.22.014.1	Rubber support	2	
12	050.8.2220.0	Filler cap compl. (with ventilation)	1	
12a	050.7.2220	Filler cap (separate)	1	
12b	050.1.2248	Seal ring (rubber) 42,5/18/1	1	
12c	050.3.2249.0	Filler element compl.	1	
13	050.1.2223	Cork gasket (42,5/30/3)	1	
14	360.2.22.026.0	Transfer picture l.h.s./r.h.s.	1	pro pair
15	050.2.2225	Bordering for 5,5 l - fuel tank, endless	1	
19	350.5.22.030.0	Fuel tab compl. (model "Karco")	1	
20	16636	Seal ring 14/10,5/1,5 (for "Karco" - tab)	1	
21	27634	Union nut M 16x1	1	
28	24456	Fuel hose sleeve	2	
29	900.0902	Fuel hose 9/5 mm dia. (150 long)		p.m.

Part No. 100-10000-0
Ford 70 D/FM England



VSD/20/1

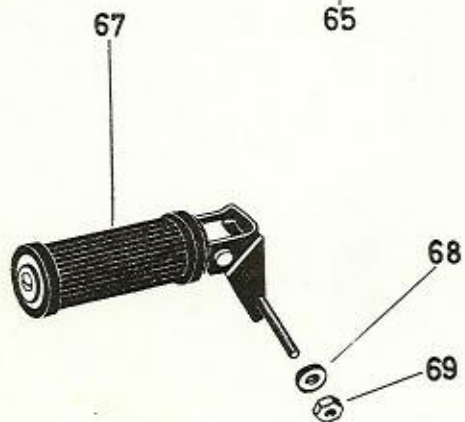
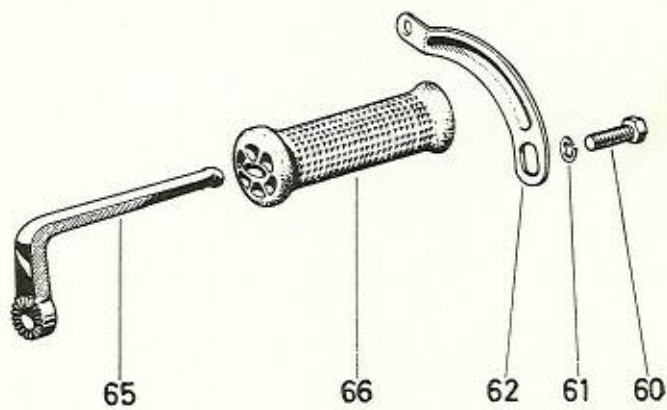
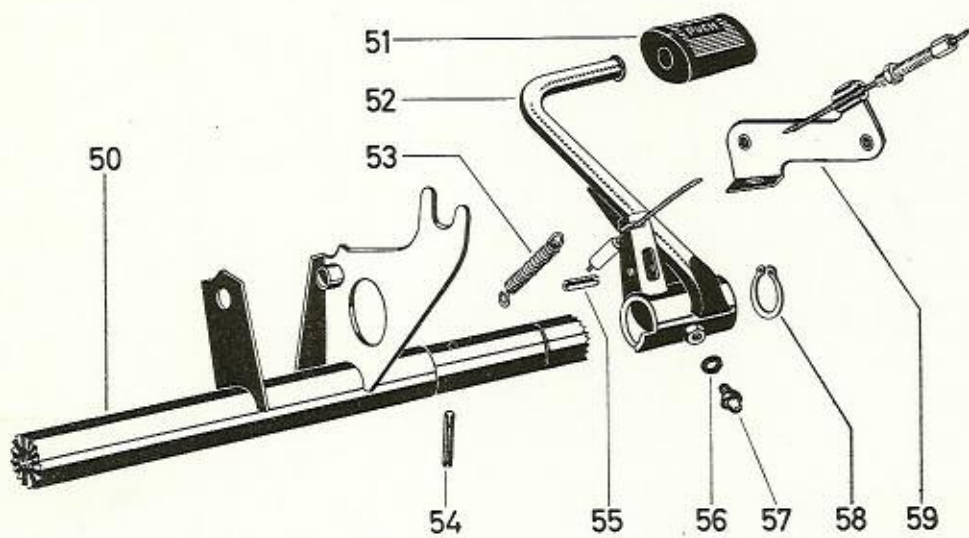
Ref. No.	Part No.	Description	Requd. No.	Note
1	350.6.20.100.0	Frame compl. (with bearing shells)	1	
2	364.1.30.052.1	Grommet	3	
3	320.1.57.001.8	Perforated cable clip (250 mm long)	p.m.	
4	320.1.57.002.1	Knob for cable clip	1	
6	25399	Hexagon head screw M6x10 DIN 933	N 1	
7	900.3212	Curved washer A6 DIN 137	N 1	
8	360.1.14.029.1	Setting angle	1	
9	360.1.20.029.2	Ground plate	1	
10	050.2050.2	Carrying handle	1	
11	361.1.20.033.1	Nomenclature plate	1	
12	900.4027	Rivet 2,6x5 DIN 660	N 2	
13	360.2.20.025.1	Transfer picture	1	
15	050.1.2122	Rubber base	2	
16	050.3.2020.2	Frame end piece (not laquered, as required, for repairs)	1	
17	050.1.2711	Mudguard ornament	1	
18	360.4.27.000.0	Front mudguard (Fender) compl. (w.stays)	1	
18	360.4.27.000.2	Front mudguard (Fender) (separate)	1	
19	24794	Washer 5,3 DIN 125	N 7	
20	900.3205	Spring washer A5 DIN 137	N 1	
21	900.1312	Fillister head screw AM5x10 DIN 84	N 1	
22	1426	Fillister head screw AM5x8 DIN 84	N 6	
23	050.4.2702	Mudguard holder	2	
24	900.2105	Hexagon nut M5 DIN 555	N 6	
25	900.2106	Hexagon nut M6 DIN 555	N 6	
26	26834	Lock washer B6 DIN 127	N 6	
27	900.1321	Fillister head screw AM6x12 DIN 84	N 2	
28	050.4.2712.2	Mudguard (fender) stay	1	

Ref. No.	Part No.	Description	Requd. No.	Note
30	050.1.2705	License plate front	1	
31	050.1.2707.2	License plate bracket front	2	
32	28909	Washer 14/6,5/1	2	
33	22804	Internal toothed washer J6,4 DIN 6797	N 2	
34	900.2106	Hexagon nut M6 DIN555	N 4	
35	364.1.27.744.1	License plate rear	1	
36	900.1321	Cheese head screw AM6x12 DIN 84	N 2	
37	900.3212	Curved washer A6 DIN 137	N 2	



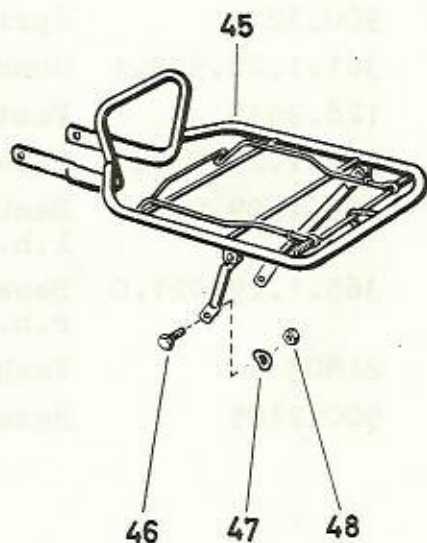
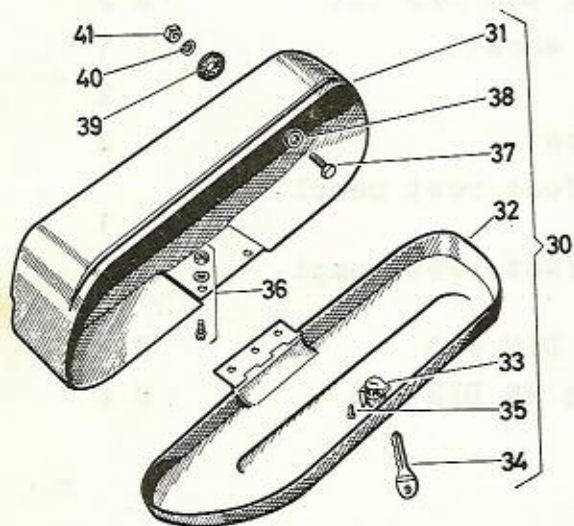
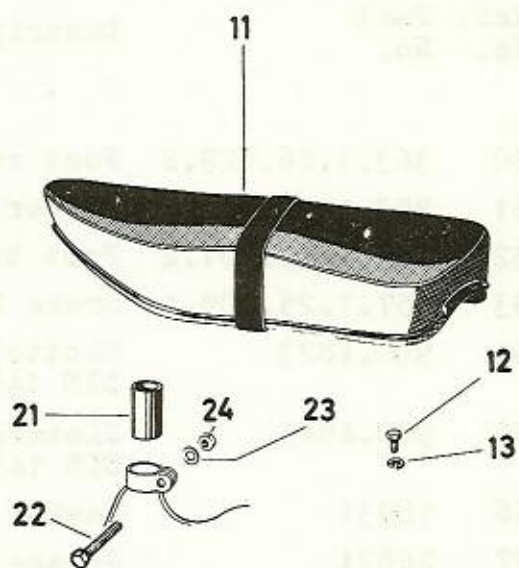
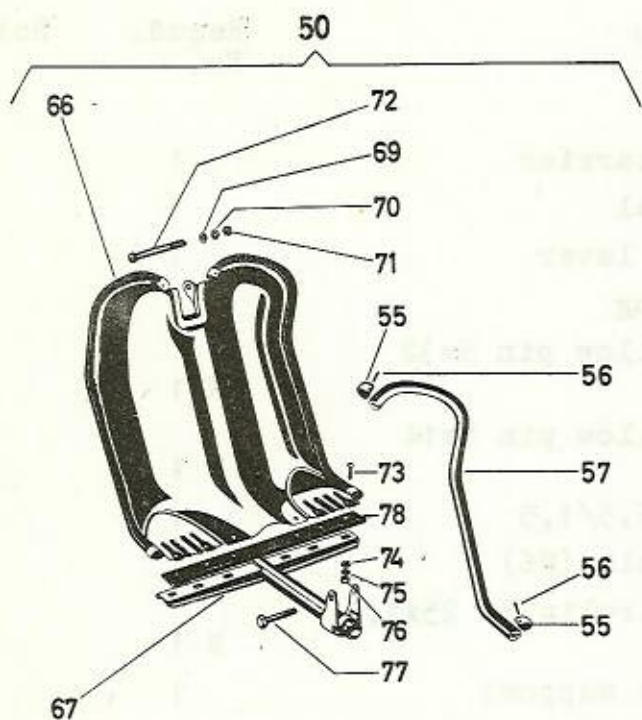
ASSEMBLY





VSD/26/1

Ref. No.	Part No.	Description	Requd. No.	Note
50	363.1.26.029.2	Foot rest carrier	1	
51	253.1436	Rubber pedal	1	
52	350.1.25.701.2	Foot brake lever	1	
53	357.1.25.009.1	Brake Spring	1	
54	900.4823	Slotted hollow pin 5x32 DIN. 1481	N 1	
55	900.4845	Slotted hollow pin 5x14 DIN 1481	N 1	
56	18931	Washer 10/6,5/1,5	1	
57	26821	Grease nipple (M6)	1	
58	900.4625	External circlip SG 25x1,2 DIN 471	N 1	
59	363.1.25.005.2	Brake cable support	1	
60	128.2505	Hexagon bolt (M14x1,5x28)	2	
61	900.3214	Spring ring B14 DIN 127	N 2	
62	361.1.26.533.1	Connecting sheet	1	
65	128.2515	Foot rest	2	
66	357.1.25.016.1	PVC-Foot rest	2	
67	365.1.29.020.0	Back seat foot rest compl. l.h.s.	1	
67	365.1.29.021.0	Back seat foot rest compl. r.h.s.	1	
68	24803	Washer 5,3 DIN 433	N 2	
69	900.2105	Hexagon nut M5 DIN 555	N 4	



VSD/33/1

Puch VS 50 D/DKH England 16. TWIN SEAT, SIDE BOXES, LUGGAGE
 CARRIER,^x LEGSHIELD^x (^xnot serial)

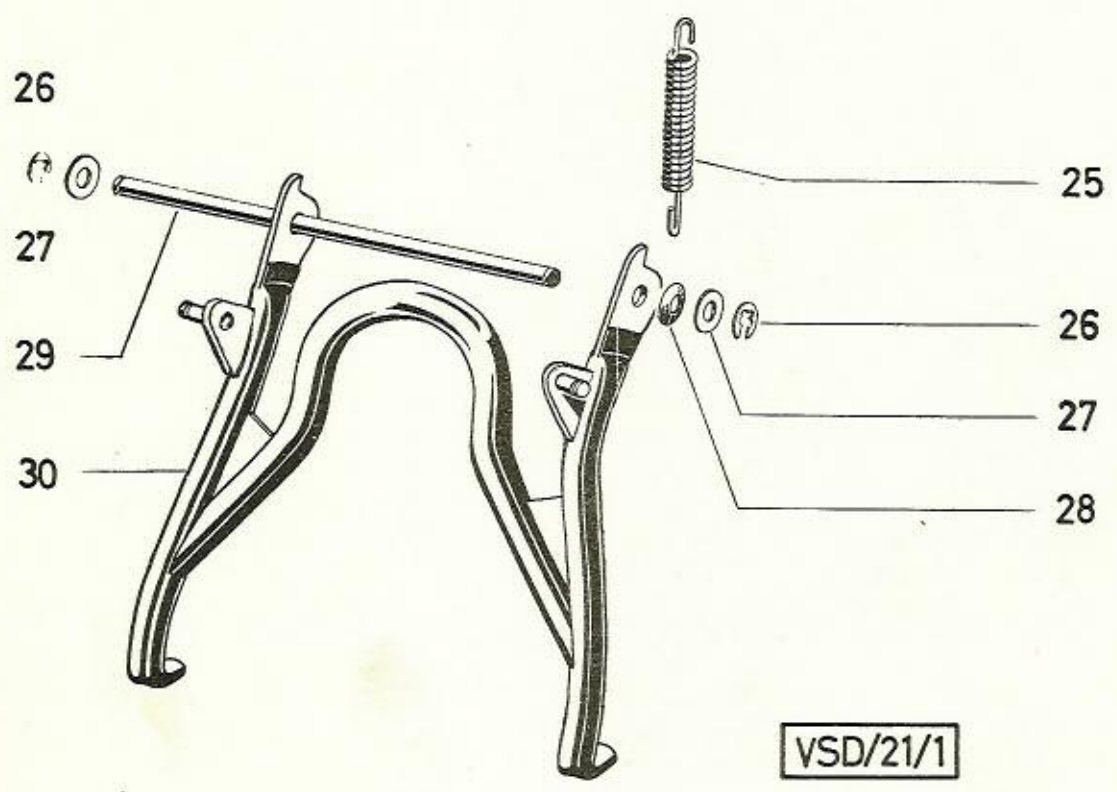
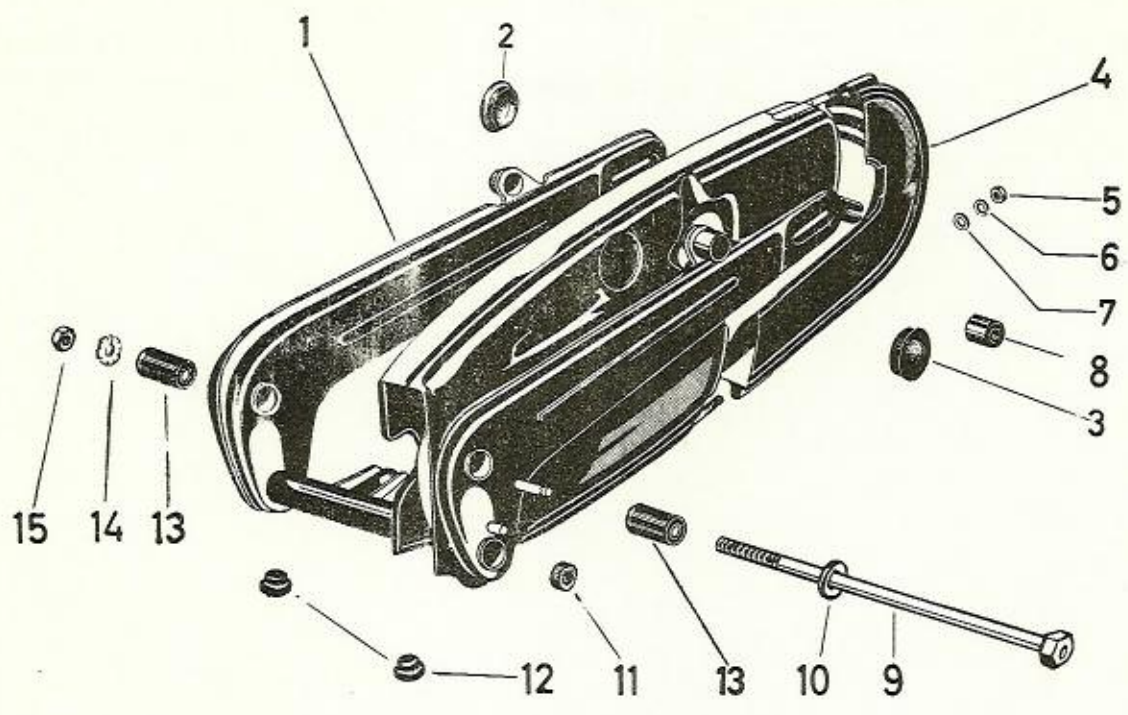
Ref. No.	Part No.	Description	Requd. No.	Note	
11	365.1.33.000.0	Twin seat compl.	1		
12	24927	Hexagon head screw M6x12 DIN 933	2		
13	26834	Spring washer B6 DIN 127	N 2		
21	53.1.2255	Pipe 22/19/40	1		
22	24858	Hexagon bolt M8x55 DIN 931-8 G	N 1		
23	24806	Washer 8,4 DIN 433	N 1		
24	24776	Hexagon nut M8 DIN 934	N 1		
30	357.1.26.000.0	Tool box compl. (with parts 31 to 41)	2		
31	050.2.2601.2	Tool box, loose	2		
32	357.1.26.002.0	Cover for tool box compl. (with lock)	2		
33	357.1.26.003.0	Lock (with 2 keys) for tool box	2		
34	350.2.30.023.1	Spare key (please state key no.)	2		
35	900.4013	Round head rivet 3x10 DIN 660	N 4		
36	(25433	Cheese head screw AM4x6 DIN 84	} for fixing cover on tool box	N 4	
	(900.3202	Curved washer A4 DIN 137			N 4
	(24771	Hexagon nut M4 DIN 934			N 4
37	23319	Hexagon head screw M5x12 DIN 933	N 6		
37 ^{xx}	26565	Hexagon head screw M5x15 DIN 933	N 2	xx required only when moun- ting a luggage carrier	
38	24803	Washer 5,3 DIN 433	N 6	} for fixing tool box on frame	
39	100.2604	Thrust ring 24/7.5/2 (rubber)	6		
40	29190	Spring washer B5 DIN 127	N 6		
41	24772	Hexagon nut M5 DIN 934	N 6		

./°

Puch VS 50 D/DKH England 16. TWIN SEAT, SIDE BOXES, LUGGAGE
 CARRIER^x, LEGSHIELD^x (cont'ed)

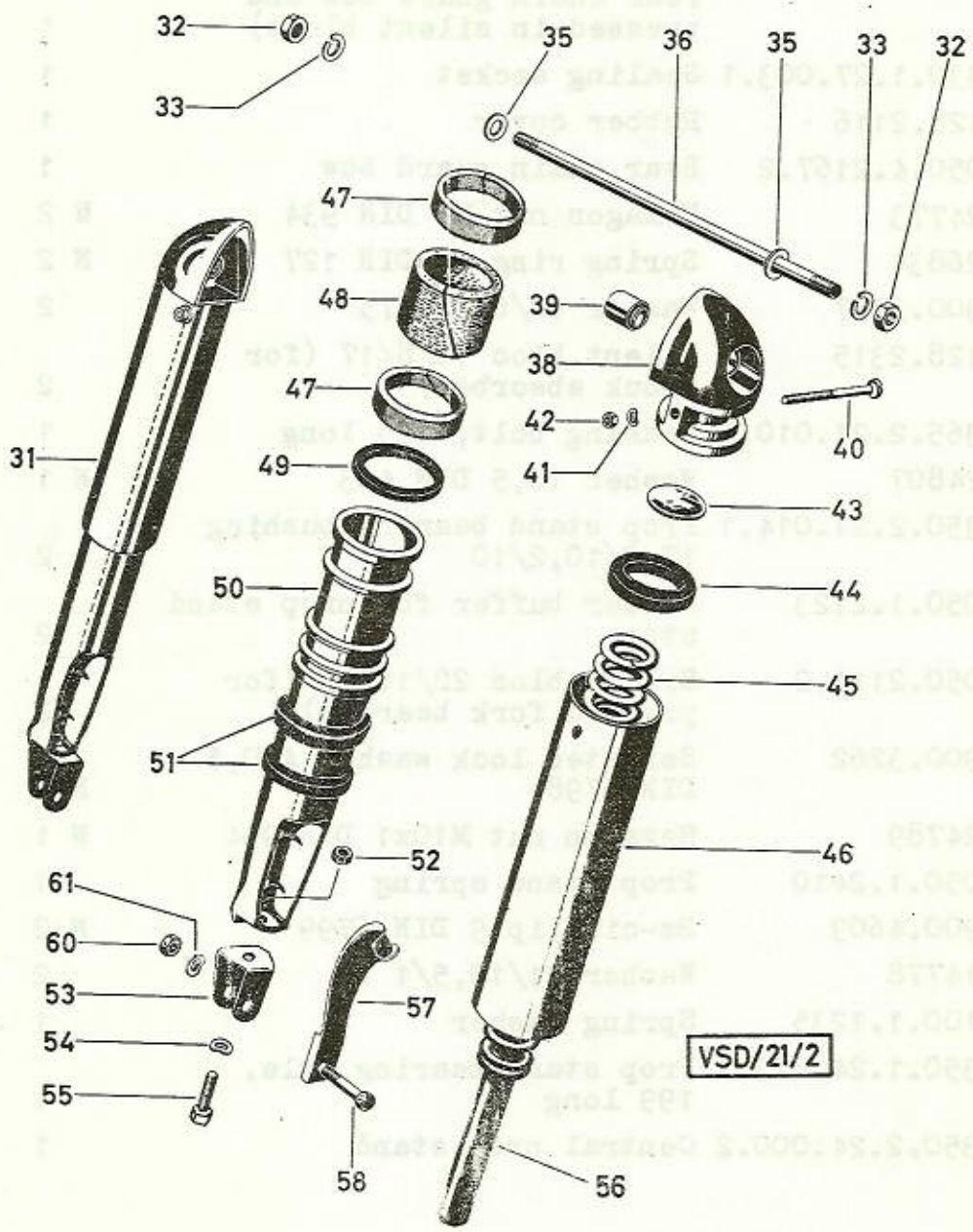
Ref. No.	Part No.	Description	Requd. No.	Note
45	360.1.29.020.0	Luggage carrier compl.	1	
46	24928	Hexagon head screw M6x15 DIN 933	N 2	
47	26834	Spring washer B6 DIN 127	N 2	
48	24773	Hexagon nut M6 DIN 934	N 2	
50	350.2.26.010.9	Legshield equipment compl. for later installation, without foot board (with parts 55-78)	1	
55	364.2.26.006.1	End piece	4	
56	364.1.26.007.1	Tube rivet B3x0,5x14	4	
57	364.2.26.005.8	Edging (1550 long)	p.m.	
66	350.2.26.010.2	Legshield (with parts 55 - 57)	1	
67	350.2.26.020.2	Carrier	1	
69	24804	Washer 6,4 DIN 433	N 2	
70	26834	Spring ring B6 DIN 127	N 1	
71	24773	Hexagon nut M6 DIN 934	N 1	
72	900.1511	Raised cheese head screw (M6x90)	1	
73	900.1513	Raised cheese head screw M5x10 DIN 85	N 6	
74	24803	Washer 5,3 DIN 433	N 6	
75	22803	Internal toothed washer J5,3 DIN 6797	N 6	
76	900.2105	Hexagon nut M5 DIN 555	N 6	
77	900.1039	Hexagon head screw M8x1x70 DIN 960 - 8G	N 1	
78	900.0547	Piping cord	1	

^x (not serial)



VSD/21/1

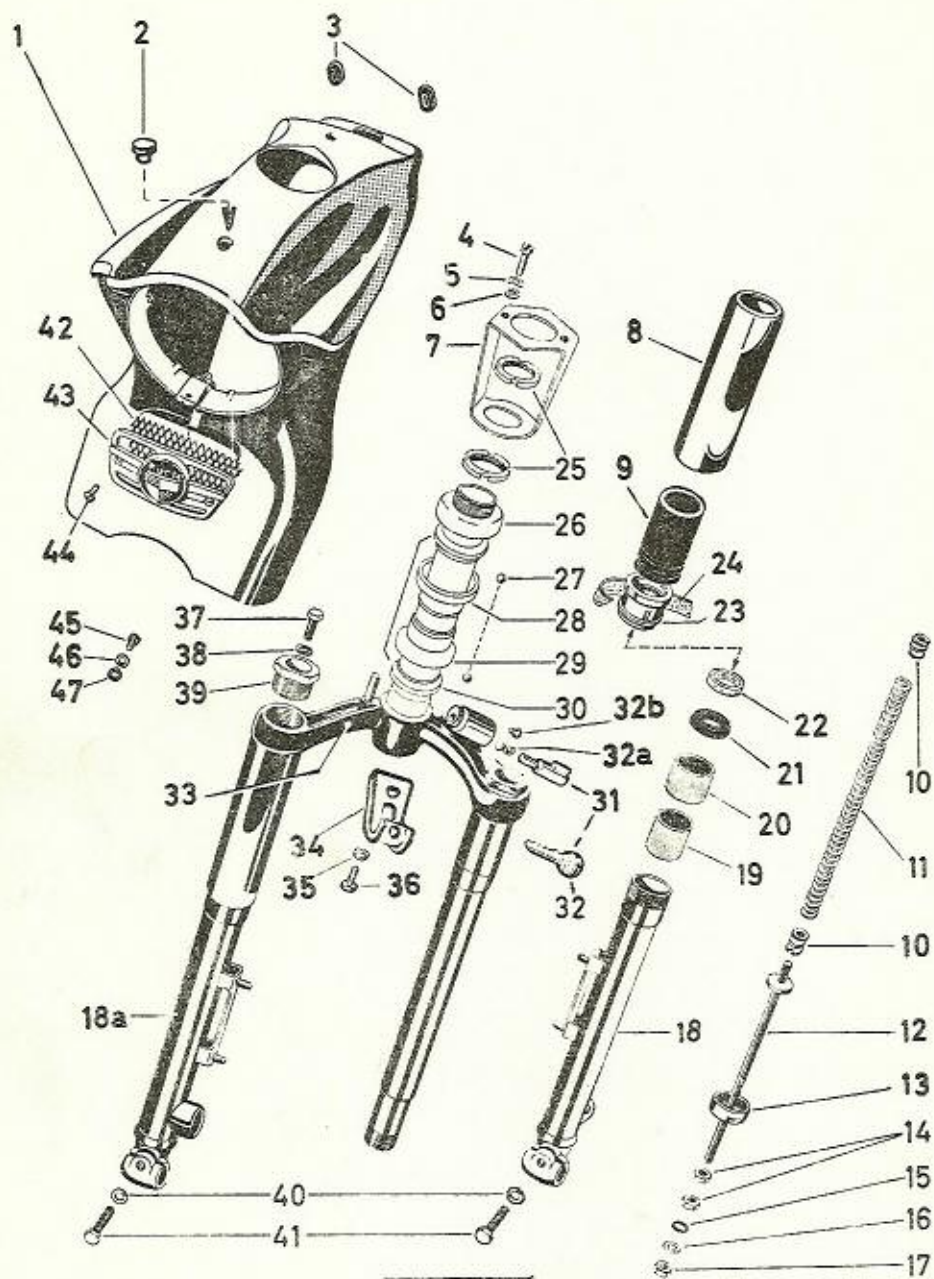
Ref. No.	Part No.	Description	Requd. No.	Note
1	050.4.2100.0	Pivoted fork compl. (with rear chain guard bow and pressed-in silent blocs)	1	
2	330.1.27.003.1	Sealing socket	1	
3	128.2116	Rubber cover	1	
4	050.4.2167.2	Rear chain guard bow	1	
5	24773	Hexagon nut M6 DIN 934	N 2	
6	26834	Spring ring B6 DIN 127	N 2	
7	900.3937	Washer 12/6,4/0,75	2	
8	128.2315	Silent bloc 16/8/17 (for shock absorber)	2	
9	365.2.21.010.2	Bearing bolt, 225 long	1	
10	24807	Washer 10,5 DIN 433	N 1	
11	350.2.21.014.1	Prop stand bearing bushing 17,2/10,2/10	2	
12	050.1.2123	Rubber buffer for prop stand stop	2	
13	050.2111.2	Silent bloc 22/10/33 (for pivoted fork bearing)	2	
14	900.3262	Serrated lock washer A10,5 DIN 6798	N 1	
15	24789	Hexagon nut M10x1 DIN 934	N 1	
25	050.1.2410	Prop stand spring	1	
26	900.4609	Bz-circlip 9 DIN 6799	N 2	
27	14778	Washer 21/10,5/1	2	
28	100.1.1235	Spring washer	1	
29	350.1.24.013.1	Prop stand bearing axle, 199 long	1	
30	350.2.24.000.2	Central prop stand	1	



VSD/21/2

Ref. No.	Part No.	Description	Requd. No.	Note
31	364.1.21.029.0	Shock absorber left, compl. (with the parts 38-56)	1	
31	364.1.21.030.0	Shock absorber right, compl. (with the parts 38-56)	1	
32	24775	Hexagon nut M8 DIN 934	N 2	
33	26819	Spring ring B8 DIN 127	N 2	
35	27780	Washer 13/8,4/2	2	
36	050.2.2113	Bolt (M8, 172 long)	1	
38	364.1.21.032.1	Strut head	2	
39	128.2315	Silent bloc 16 mm dia., 17 long	2	
40	900.1522	Lens head screw M5x50 DIN 85	N 2	
41	900.3205	Spring washer A5 DIN 137	N 2	
42	24772	Hexagon nut M5 DIN 934	N 2	
43	050.5.2136	Closure washer 27 mm dia.	2	
44	050.5.2133	Buffer ring (rubber 43/29,5/8)	2	
45	050.5.2134	Thrust spring, 200 long, size of wire 5 mm dia.	2	
46	050.5.2131	Sliding tube (45 mm dia., 145 long)	2	
47	050.5.2141	Guide bushing (plastic 43/37,5/9)	4	
48	050.5.2139	Grease felt 126,5x27x3	2	
49	050.5.2143	Felt washer, 112 long	2	
50	050.5.2140	Lower sliding tube	2	
51	050.5.2138	Stop ring 41/34/6	4	
52	24773	Hexagon nut M6 DIN 934	N 2	
53	050.5.2137	Supporting bracket	2	
54	22804	Toothed lock washer J6,4 DIN 6797	N 2	
55	24928	Hexagon head screw M6x15 DIN 933	N 2	
56	050.5.2135	Rubber rod 17 mm dia. 175 long	2	
57	350.1.25.017.1	Holder for brake control cable	1	

Ref. No.	Part No.	Description	Requd. No.	Note No.
58	900.1121	Hexagon head screw M8x30 DIN 933	N 2	
60	900.2016	Hexagon nut M8 DIN 934	N 2	
61	900.3211	Spring washer B8 DIN 137	N 2	



VSD/30/1

Puch VS 50 D/DKH England 19. FRONT FORK WITH STEERING, VERSION I

for VS 50 D : until Ma. 9,107.660

for VS 50 DKH: until Ma. 6,814.992

Ref. No.	Part No.	Description	Requd. No.	Note
-	360.6.30.000.0	Front fork compl.	1	
1	360.1.30.043.2	Headlamp bracket	1	
2	364.1.30.062.1	Plug	1	
3	101.1.5041	Grommet	2	
4	24928	Hexagon head screw M6x15 DIN 933	N 2	
5	900.3212	Spring ring A6 DIN 137	N 2	
6	900.3926	Washer 14/6,5/2	2	
7	364.1.30.045.2	Bracket	1	
8	050.4.3037	Exterior fork tube	2	
9	050.4.3036	Rubber buffer	2	
10	050.3035	Threaded coupling	4	
11	350.1.30.034.1	Thrust spring (14 mm dia., 235 long)	2	
12	360.1.30.030.2	Spring bolt (156 long)	2	
13	050.4.3010	Bottom joint	2	
14	24417	Flat hexagon nut AM6 DIN 439 for spring bolt	N 4	
15	900.3883	Rubber seal RS 6-9-1,5	2	
16	24795	Washer 6,4 DIN 125	N 2	
17	900.2106	Hexagon nut M6 DIN 555	N 2	
18	050.4.3015.2	Sliding tube l.h.s., 30 mm dia., 240 long	1	
18a	050.4.3016.2	Sliding tube r.h.s., 30 mm dia., 240 long	1	
19	050.4.3009	Bottom guide bushing 28/23/26	2	
20	050.4.3026	Top guide bushing 29,5/25/26	2	
21	050.4.3029	Seal for annular grooves (rubber, 29 medium dia.)	2	
22	050.4.3049	Felt washer 32,5/25/6	2	
23	050.4.3027	Grooved shell	2	
24	050.4.3039	Felt strip 12x2,7, 122 long	2	
25	250.3104	Slotted circular nut	2	

./.

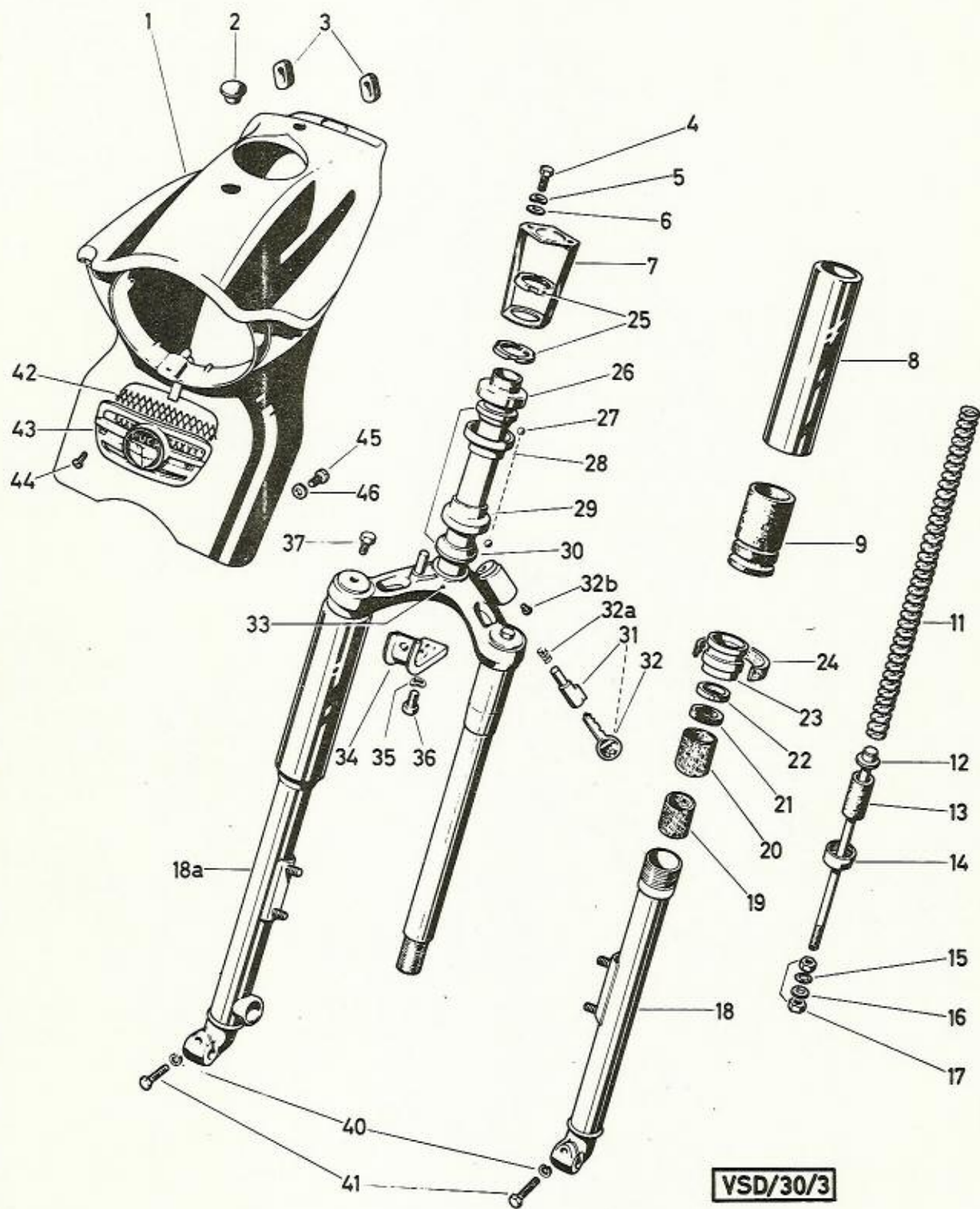
(cont'ed)

Puch VS 50 D/DKH England 19. FRONT FORK WITH STEERING, VERSION I

for VS 50 D : until Ma. 9,107.660

for VS 50 DKH: until Ma. 6,814.992

Ref. No.	Part No.	Description	Requd. No.	Note
26	25222	Dust cap	1	
27	25226	Ball 5 mm dia.	42	
28	25221	Top steering bearing seat	1	
29	25225	Bottom steering bearing seat	1	
30	25220	Steering cone	2	
31	330.1.20.052.0	Lock compl. (Neiman II) (with 2 keys)	1	
32	350.2.30.023.1	Spare key (please quote key number!)	-	
32a	330.1.20.059.1	Thrust spring	1	
32b	330.1.20.060.1	Al-notched rivet	1	
33	360.4.30.006.2	Fork lug	1	
34	360.1.30.062.1	Horn bracket	1	
35	900.3207	Curved washer A7 DIN 137	N 1	
36	900.1130	Hexagon head screw M7x15 DIN 933	N 1	
37	24928	Hexagon head screw M6x15 DIN 933	N 2	
38	24795	Washer 6,4 DIN 125	N 2	
39	050.4.3012	Screw plug (M22x1)	2	
40	29189	Spring ring B7 DIN 127	N 2	
41	900.1128	Hexagon head screw M7x20 DIN 933	N 2	
42	364.1.30.050.1	Grill	1	
43	364.1.30.048.1	Trademark plate	1	
44	28877	Lens head screw AM4x10 DIN 88	N 2	
45	900.1513	Lens head screw M5x10 DIN 85	N 2	
46	24794	Washer 5,3 DIN 125	N 2	
47	21526	Seal washer 9/5,3/1	2	



Puch VS 50 D/DKH England 19a. FRONT FORK WITH STEERING, VERSION II

for VS 50 D : from Ma. 9,107.661

for VS 50 DKH: from Ma. 6,814.993

Ref. No.	Part No.	Description	Requd. No.	Note
-	360.1.30.100.0	Front fork compl. (with parts 8 - 41)	1	
1	360.1.30.043.2	Headlamp bracket	1	
2	364.1.30.062	Plug	1	
3	101.1.5041	Grommet	2	
4	24928	Hexagon head screw M6x15 DIN 933	N 2	
5	900.3212	Curved washer A6 DIN 137	N 2	
6	900.3926	Washer 14/6,5/2	2	
7	364.1.30.045.2	Bracket	1	
8	050.4.3037	Exterior fork tube	2	
9	050.4.3036	Rubber buffer	2	
11	350.1.30.134.1	Thrust spring (14 mm dia., 263 long)	2	
12	350.2.30.130.1	Spring bolt (134 long)	2	
13	350.1.30.132.1	Rubber stop 17/8/32	2	
14	360.1.30.110.1	Bottom joint	2	
15	900.3883	Rubber seal RS 6-9-1,5	2	
16	24804	Washer 6,4 DIN 433	N 2	
17	900.2106	Hexagon nut M6 DIN 555	N 4	
18	050.4.3015.2	Sliding tube l.h.s., 30 mm dia., 240 long	1	
18a	050.4.3016.2	Sliding tube r.h.s., 30 mm dia., 240 long	1	
19	050.4.3009	Bottom guide bushing 28/23/26	2	
20	050.4.3026	Top guide bushing 29,5/25/26	2	
21	050.4.3029	Seal for annular grooves (rubber, 29 mm medium dia.)	2	
22	050.4.3049	Felt washer 32,5/25/6	2	
23	360.1.30.127.1	Grooved shell	2	
24	050.4.3039	Felt strip 12x2,7, 122 long	2	
25	250.3104	Slotted circular nut	2	
26	25222	Dust cap	1	

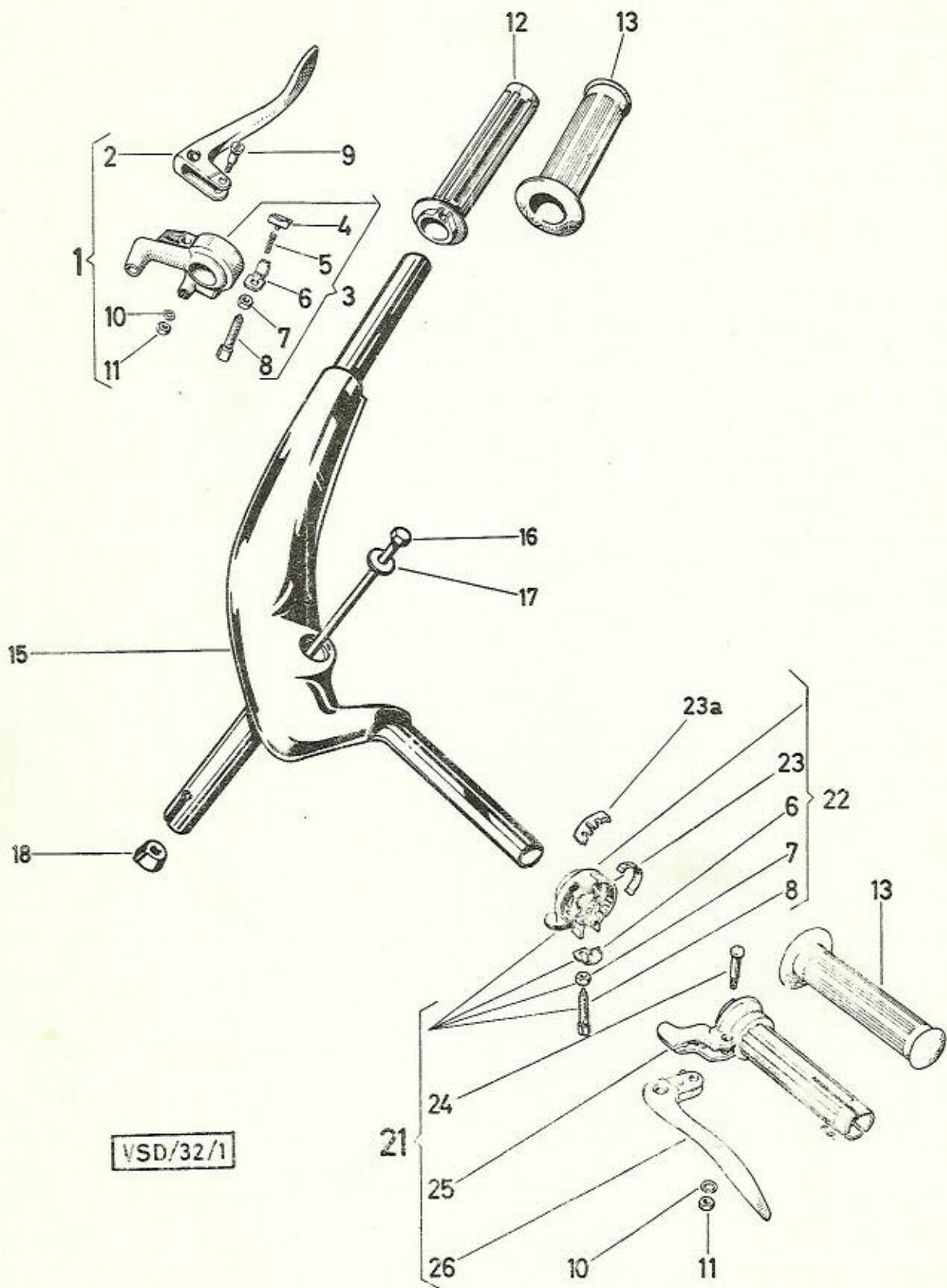
./.

Puch VS 50 D/DKH England 19a. FRONT FORK WITH STEERING, VERSION II

for VS 50 D : from Ma. 9,107.661

for VS 50 DKH : from Ma. 6,814.993

Ref. No.	Part No.	Description	Requd. No.	Note
27	25226	Ball 5 mm dia.	42	
28	25221	Top steering bearing seat	1	
29	25225	Bottom steering bearing seat	1	
30	25220	Steering cone	2	
31	330.1.20.052.0	Lock compl. (Neiman II) (with 2 keys)	1	
32	350.2.30.023.1	Spare key (please quote key number)	-	
32a	330.1.20.059.1	Thrust spring	1	
32b	330.1.20.060.1	Al-notched rivet	1	
33	360.1.30.106.2	Fork lug	1	
34	360.1.30.062.1	Horn bracket	1	
35	900.3207	Curved washer A7 DIN 137	N 1	
36	900.1130	Hexagon head screw M7x15 DIN 933	N 1	
37	900.1122	Hexagon head screw M6x6 DIN 933	N 2	
40	29189	Spring ring B7 DIN 127	N 2	
41	900.1128	Hexagon head screw M7x20 DIN 933	N 2	
42	364.1.30.050.1	Grill	1	
43	364.1.30.048.1	Trademark plate	1	
44	28877	Lens head screw AM4x10 DIN 88	N 2	
45	900.1513	Lens head screw M5x10 DIN 85	N 2	
46	24794	Washer 5,3 DIN 125	N 2	

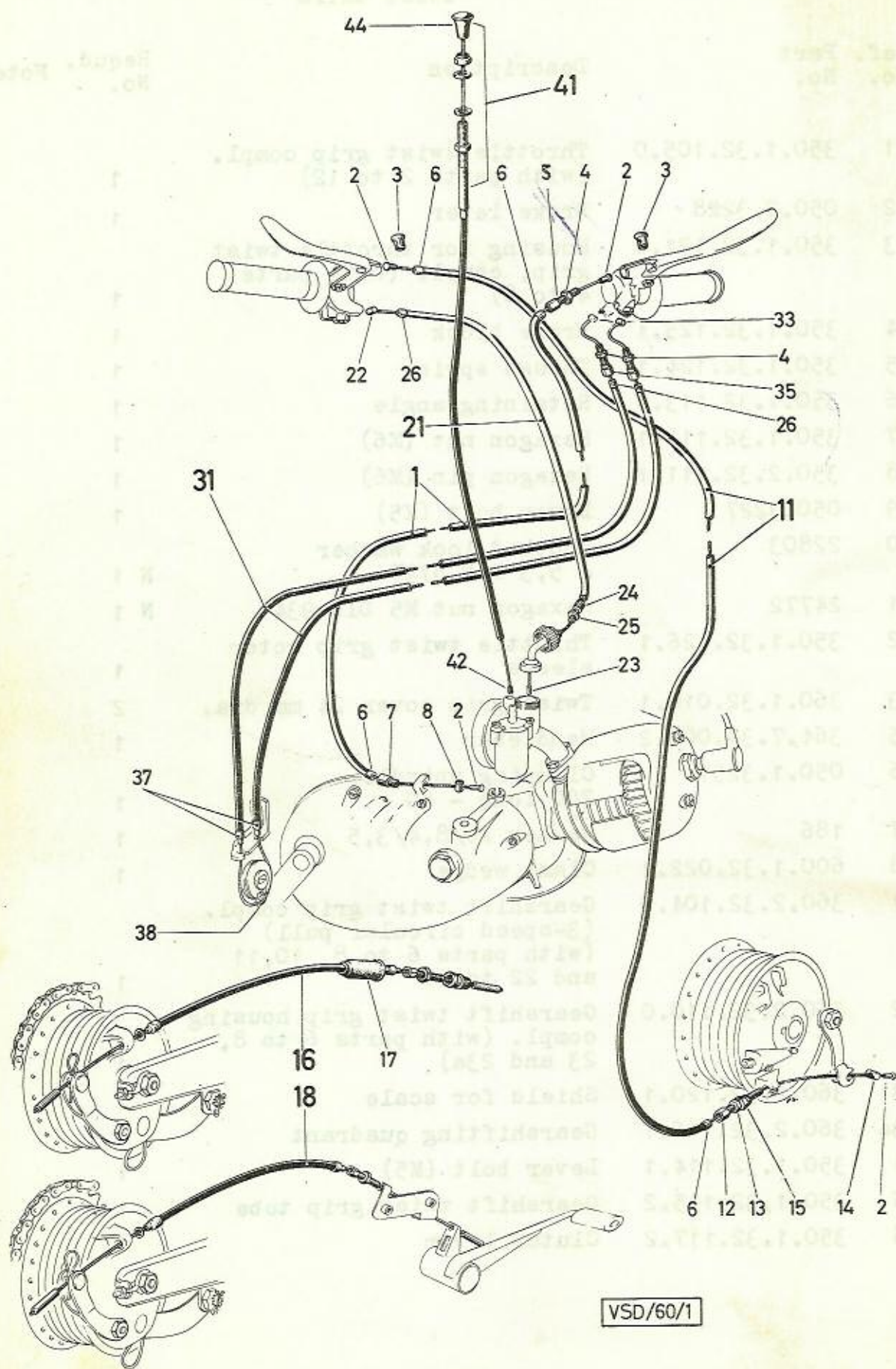


VSD/32/1

Puch VS 50 D/DKH England 20. HANDLEBAR, GEARSHIFT AND THROTTLE
TWIST GRIPS

Ref. No.	Part No.	Description	Requd. No.	Note
1	350.1.32.105.0	Throttle twist grip compl. (with parts 2 to 12)	1	
2	050.2.3228	Brake lever	1	
3	350.1.32.121.0	Housing for throttle twist grip, compl. (with parts 4 to 8)	1	
4	350.1.32.125.1	Brake block	1	
5	350.1.32.124.1	Thrust spring	1	
6	350.1.32.113.1	Retaining angle	1	
7	350.1.32.112.1	Hexagon nut (M6)	1	
8	350.2.32.111.1	Hexagon pin (M6)	1	
9	050.3227	Lever bolt (M5)	1	
10	22803	Toothed lock washer J 5,3 DIN 6797	N 1	
11	24772	Hexagon nut M5 DIN 934	N 1	
12	350.1.32.126.1	Throttle twist grip rotor sleeve	1	
13	360.1.32.016.1	Twist grip cover 24 mm dia.	2	
15	364.7.32.000.2	Handlebar	1	
16	050.1.3251	Clamping spindle, 200 long - 8G	1	
17	186	Washer 20/8,4/3,5	1	
18	600.1.32.022.1	Clamp wedge	1	
21	360.2.32.104.0	Gearshift twist grip compl. (3-speed circular pull) (with parts 6 to 8, 10,11 and 22 to 26)	1	
22	360.2.32.110.0	Gearshift twist grip housing compl. (with parts 6 to 8, 23 and 23a)	1	
23	360.2.32.120.1	Shield for scale	1	
23a	360.2.32.116.1	Gearshifting quadrant	1	
24	350.1.32.114.1	Lever bolt (M5)	1	
25	350.1.32.115.2	Gearshift twist grip tube	1	
26	350.1.32.117.2	Clutch lever	1	

Handbook
No. 10



VSD/60/1

Ref. No.	Part No.	Description	Requd. No.	Note
1	350.1.62.100.0	Clutch control cable compl. (wire 1175/ cover 1060)	1	
2	360.1.62.015.1	Soldering nipple	4	
3	050.1.3208	Nipple holder	2	
4	900.2311	Hexagon lock nut BM6 DIN 439	N 3	
5	350.1.32.119.1	Adjusting screw (M6)	1	
6	25483	Shell	4	
7	250.6204	Supporting shell	1	
8	250.6208	Nipple holder, slotted	1	
11	364.2.63.100.0	Brake control cable for front wheel compl. (wire 1120/ cover 995)	1	
12	250.6010	Adjusting screw (M7)	1	
13	24774	Hexagon nut M7 DIN 934	N 1	
14	24384	Nipple holder	1	
15	364.1.25.005.1	Nut with collar, slotted	1	
16	050.6.2500.2 ^x	Brake control cable for rear wheel compl. (wire 571/ cover 380)	1	Version A
17	250.6103	Cable socket	1	
18	363.1.25.000.2 ^{xx}	Brake control cable for rear wheel compl. (wire 600/ cover 300)	1	Version B
21	350.1.65.100.0	Carburettor control cable compl. (wire 890/ cover 760)	1	
22	360.1.32.007.1	Soldering nipple	1	
23	050.2.6505	Soldering nipple	1	
24	050.1520	Cable adjusting screw (M5)	1	
25	900.2115	Hexagon lock nut BM5 DIN 439	N 1	
26	050.2.6203	Shell	3	
31	360.1.66.100.2	Gear shift control cable (wire 2415/ covers 2x1150)	1	
33	360.1.66.008.1	Soldering nipple	2	

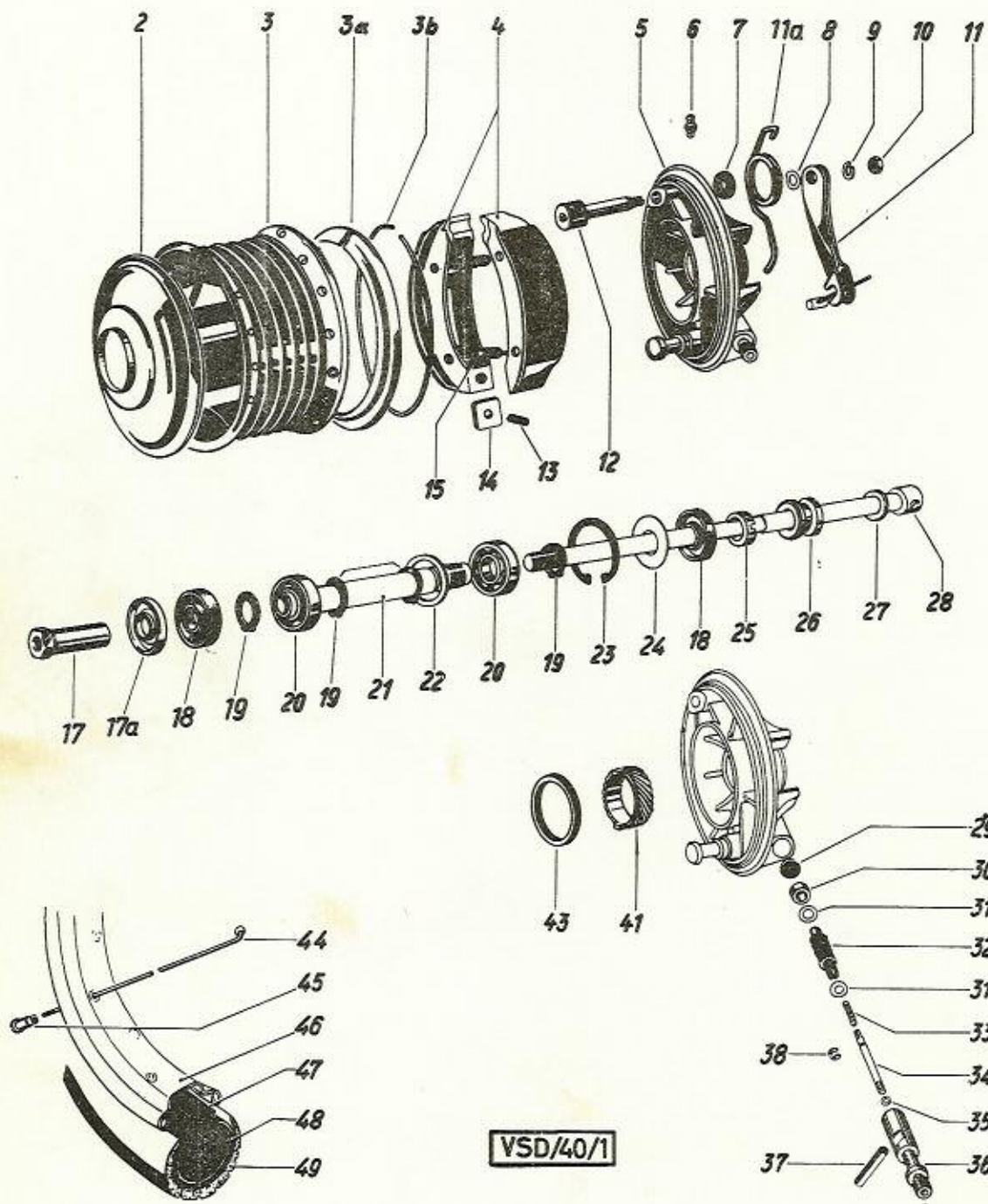
x Version A: for models with crank

xx Version B: for models with kickstarter

Ref. No.	Part No.	Description	Requd. No.	Note
35	350.1.32.118.1	Adjusting screw (M6)	2	
37	050.1.1428	Supporting shell	2	
38	360.1.66.007.1	Barrel press nipple	1	
41	360.1.65.003.0	Control cable compl. for choke	1	
42	050.2.6506	Soldering nipple 3/1,2 mm dia.	1	
44	050.3.6503.2	Pull knob with wire	1	



APR 1911



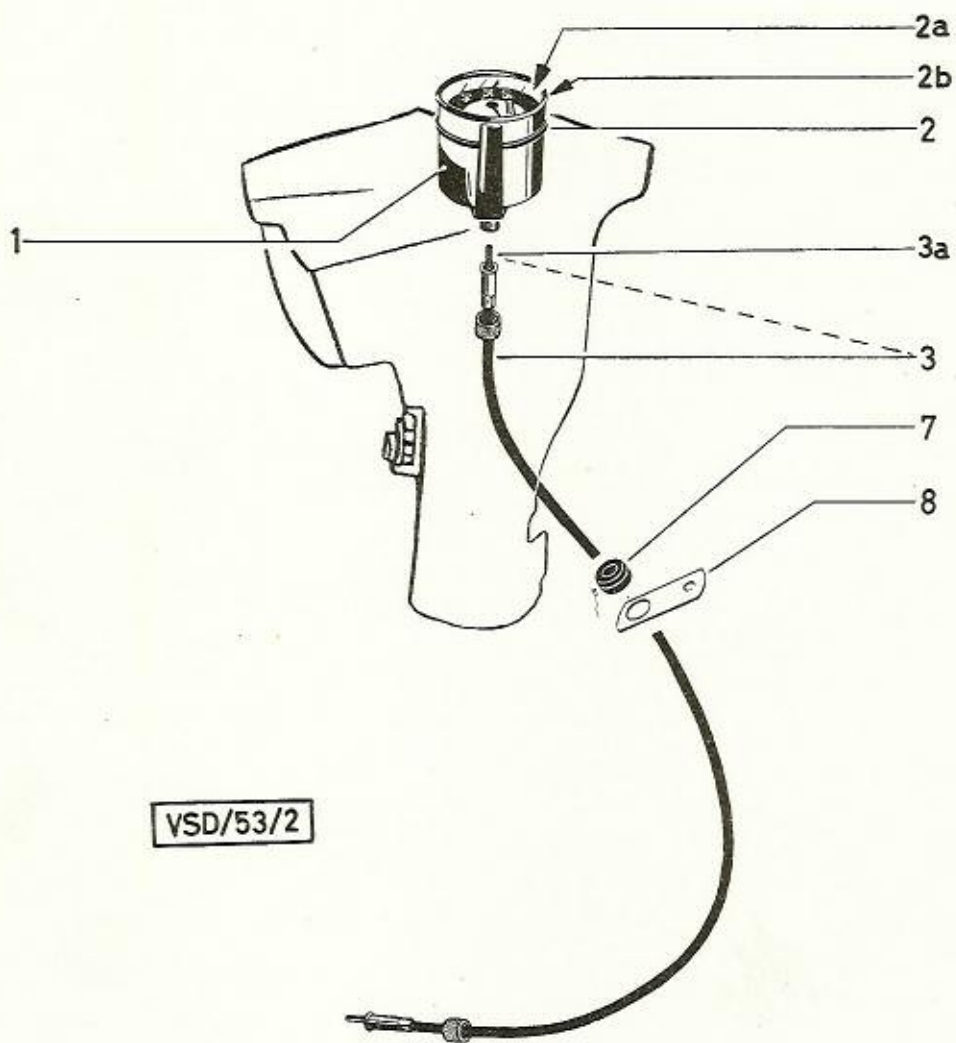
VSD/40/1

Puch VS 50 D/DKH England 22. FRONT WHEEL WITH SPEEDOMETER DRIVE

Ref. No.	Part No.	Description	Requd. No.	Note
-	360.3.40.000.0	Front wheel compl. (without tire)	1	
-	050.4.4002.0	Front wheel full hub compl. (with interior parts)	1	
2	350.1.40.040.1	Hub cover	1	
3	050.4.4104	Brake drum	1	
3a	350.1.41.042.1	Guard ring 129,5 mm dia.	1	
3b	050.10.1074	Wire circlip	1	
4	050.4.4015.0	Pair of brake shoes with glued lining	1	
-	360.2.40.007.0	Brake cover plate compl. with speedometer drive	1	
5	360.2.40.007.2	Brake cover plate without speedometer drive	1	
6	900.6177	Grease nipple A6 DIN 71412	N 1	
7	128.2504	Packing ring 20/12/3 (rubber)	1	
8	900.3219	Spring washer 21/12,5/0,2	1	
- 9	26819	Spring washer B8 DIN 127	N 1	
10	26820	Hexagon nut M8x1 DIN 934	N 1	
11	050.5.4013.2	Brake lever, 78 long	1	
11a	350.4.41.015.1	Restoring spring	1	
12	360.2.40.009.2	Brake cam, 66 long	1	
13	900.4812	Slotted hollow pin 4x10 DIN 1481	N 2	
14	050.4.4016	Sliding plate, 3,5 thick	2	
14	050.4.4016.3	Sliding plate, 4 thick (for repairs)	-	
15	050.4.4019	Brake shoe spring, 50 long	2	
17	050.4.4027	Nut for axle (M10x1)	1	
17a	360.1.40.046.1	Dust cap	1	
18	050.4.4025.0	Packing ring 32/15/5,5	2	
19	900.4619	Circlip Sg 15x1 DIN 471	N 4	
20	900.6002	Ball race 32/15/9 D 6002 DIN 625	N 2	
21	360.1.40.023.1	Spacer tube (threaded for thrust ring)	1	

./.

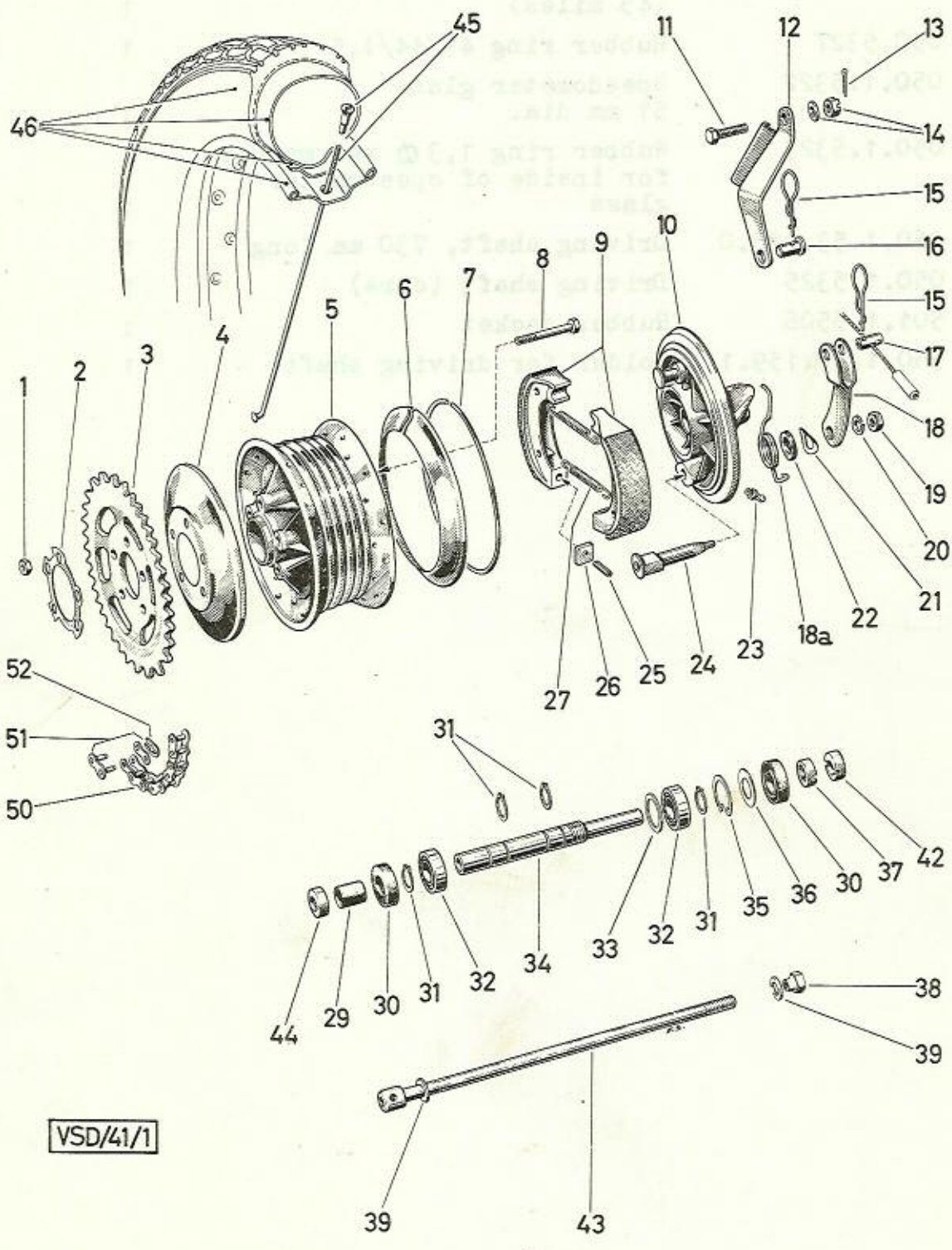
Ref. No.	Part No.	Description	Requd. No.	Note
22	050.4.4022	Supporting disc 32/25/1,5	1	
23	900.4732	Circlip Sg32x1,2 DIN 472	N 1	
24	050.4.4039	Spacer 32/15,5/0,5	1	
25	050.4.4041	Slotted nut M14x1	1	
26	050.5.4043	Thrust ring 20/12,5/9	1	
27	050.1.4029	Disc 18/10,5/2,5	1	
28	364.4.40.026.1	Front wheel axle, 173 long (knock-out axle)	1	
PARTS FOR SPEEDOMETER DRIVE				
29	050.4.4067	Washer 13,5 mm dia, (plastic)	1	
30	050.4.4066	Bushing 14/8/7	1	
31	050.4.4065	Thrust washer 13/8/0,3	2	
32	050.4.4061	Speedometer gear, driven (12 teeth) 13,1 mm dia.	1	
33	050.4.4068	Thrust spring, 14 long	1	
34	050.4.4058	Driving shaft, 40 long	1	
35	900.3961	Thrust washer 7,5/4/0,3	1	
36	050.4.4063	Connecting piece	1	
37	900.4815	Slotted hollow pin 5x25 DIN 1481	N 1	
38	900.4603	Bz-Circlip 3,2 DIN 6799	N 1	
41	360.2.40.060.1	Speedometer gear, driving (22 teeth)	1	
43	050.4.4042	Packing ring 48/37/4,5	1	
44	365.1.40.030.1	Spoke 2,65 mm dia., 208 long	36	
45	365.1.40.031.1	Nipple M3	36	
46	350.5.40.033.1	Rim 19"	1	
47	900.0840	Chafing strip 19"	1	
48	900.0843	Inner tube 23" - 2,25"	1	
49	900.0841	Tire 23" - 2,25"	1	



VSD/53/2

Ref. No.	Part No.	Description	Requd. No.	Note
1	050.2.5324	Speedometer 48 mm dia. (45 miles)	1	
2	050.5327	Rubber ring 49/44/1,5	1	
2a	050.1.5322	Speedometer glass 51 mm dia.	1	
2b	050.1.5323	Rubber ring 1,3 \varnothing x40 mm dia. for inside of speedometer glass	1	
3	360.1.53.025.0	Driving shaft, 730 mm long	1	
3a	050.1.5325	Driving shaft (core)	1	
7	501.1.8506	Rubber socket	1	
8	350.1.30.159.1	Holder for driving shaft	1	

SAFETY DRIVING WITH WHEELS...
Description
No. 10

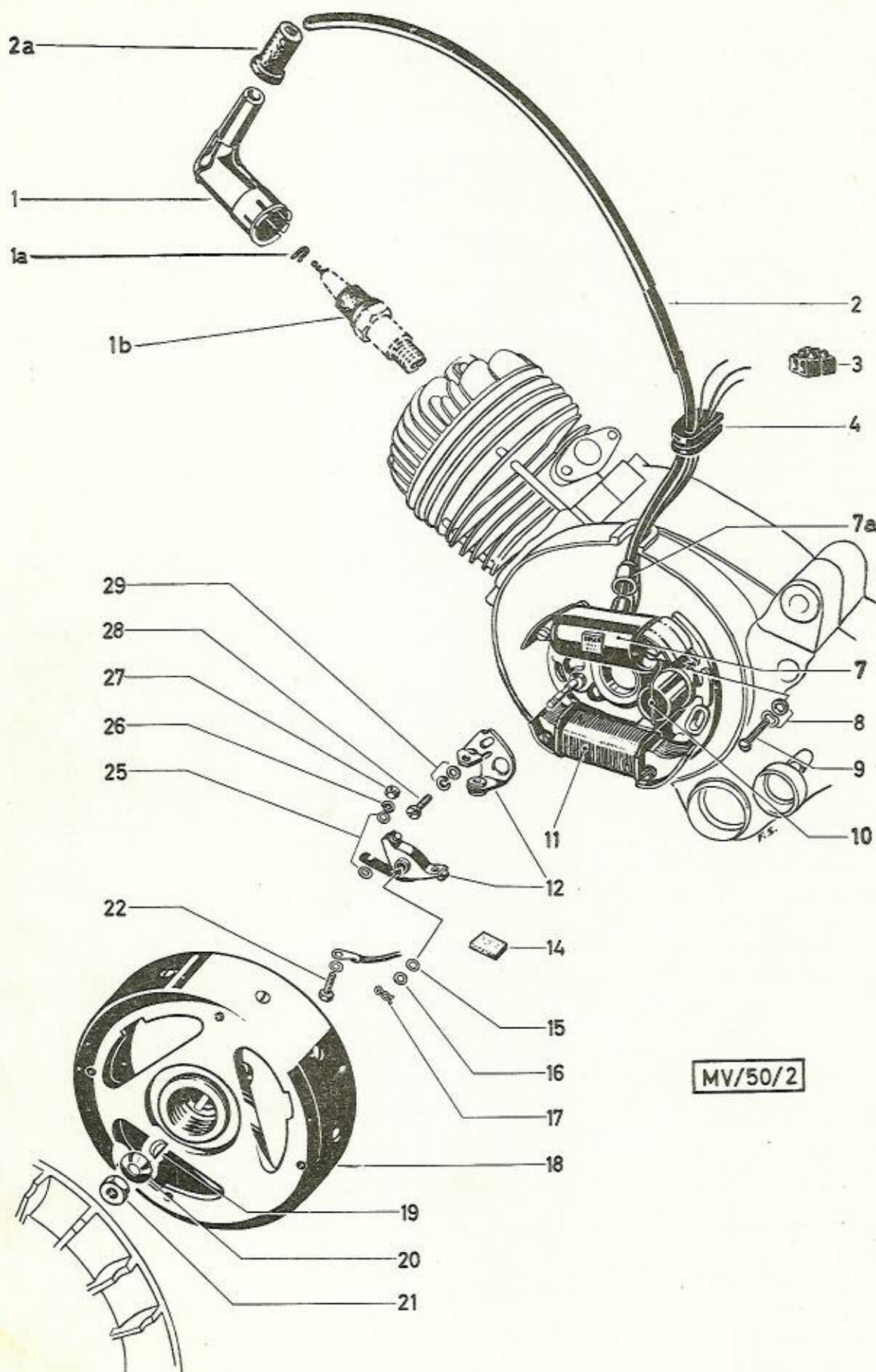


VSD/41/1

Ref. No.	Part No.	Description	Requd. No.	Note
-	360.3.41.100.0	Rear wheel compl. (23" 34 teeth)(without tire)	1	
-	360.8.41.002.0	Rear wheel full hub compl. (34 teeth)(with interior parts)	1	
1	900.2012	Hexagon nut M7 - 8G	5	
2	350.1.41.010.1	Securing plate	1	
3	050.4.4109	Chain sprocket (34 teeth) (9 mm high)	1	
4	050.5.4040	Hub cover	1	
5	050.4.4104	Brake drum	1	
6	350.1.41.042.1	Guard ring 129,5 mm dia.	1	
7	050.10.1074	Wire circlip	1	
8	901.1105	Hexagon bolt M7x50T0 DIN 931-8G	N 5	
9	050.4.4015.0	Pair of brake shoes with glued lining	1	
10	360.2.41.007.1	Brake cover plate	1	
11	900.1072	Hexagon bolt M8x20 S DIN 931	N 1	
12	050.4.4128.2	Brake stop clip	1	
13	22764	Split pin 2x20 DIN 94	N 1	
14	900.2924	Castle lock nut M8 DIN 937	N 1	
14	24806	Plain washer 8,4 DIN 433	N 1	
15	101.1.4113	Securing spring	2	
16	360.2.41.029.1	Retaining bolt for brake stop clip	1	
17	101.1.4112	Retaining bolt (slotted) for brake lever	1	
18	050.7.4113.2	Brake lever	1	
18a	350.4.41.015.1	Restoring spring	1	
19	26820	Hexagon nut M8x1 DIN 934	N 1	
20	26819	Spring washer B8 DIN 127	N 1	
21	900.3219	Curved washer 21/12,5/0,2	1	
22	128.2504	Packing ring 20/12/3 (rubber)	1	
23	900.6177	Grease nipple A6 DIN 71412	N 1	

Puch VS 50 D/DKH England 25. REAR WHEEL, DRIVING CHAIN, (cont'ed)

Ref. No.	Part No.	Description	Requd. No.	Note
24	360.2.40.009.2	Brake cam, 66 long	1	
25	900.4812	Slotted hollow pin 4x10 DIN 1481	N 2	
26	050.4.4016	Sliding plate, 3,5 thick	2	
26	050.4.4016.3	Sliding plate, 4 thick (for repair)	-	
27	050.4.4019	Brake shoe spring, 50 long	2	
29	050.4.4146	Protective tube 16x1 mm dia., 18 long	1	
30	050.4.4025.0	Packing ring 32/15/5,5	2	
31	900.4619	Snap ring Sg15x1 DIN 471	N 4	
32	900.6002	Ball bearing 32/15/9 6002 DIN 625	N 2	
33	050.4.4022	Supporting disc 32/25/1,5	1	
34	050.4.4123	Spacer tube, 140 long	1	
35	900.4732	Snap ring Sg32x1,2 DIN 472	N 1	
36	050.4.4039	Spacer disc 32/15,5/0,5	1	
37	050.4.4041	Slotted nut M14x1	1	
38	365.1.41.027.1	Nut with collar M10x1 20 mm long	1	
39	050.1.4029	Washer 18/10,5/2,5	2	
42	050.4.4130	Thrust ring right 22/12,5/6	1	
43	350.1.41.026.1	Rear wheel axle, 193 long (knock-out axle)	1	
44	050.4.4125	Thrust ring left 20/11/6	1	
45	{ 365.1.40.030.1	Spoke 2,65 mm dia., 208 long	36	
	{ 365.1.40.031.1	Nipple M3	36	
	{ 350.5.40.033.1	Rim 19"	1	
46	{ 900.0840	Chafing strip 19"	1	
	{ 900.0843	Inner tube 23" - 2,25"	1	
	{ 900.0841	Tire 23" - 2,25"	1	
50	050.4.2810.0	Driving chain (1/2" x 3/16") 94 links	1	
51	050.4.2820.0	Chain master link compl.	1	
52	1150	Chain master spring	1	

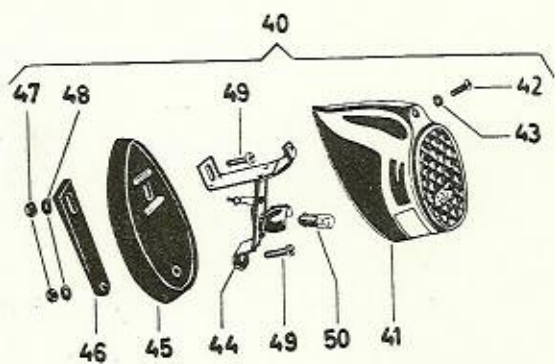
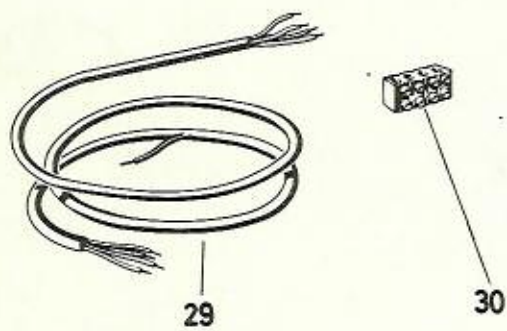
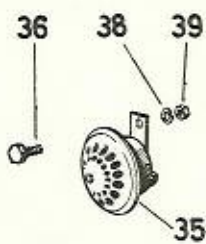
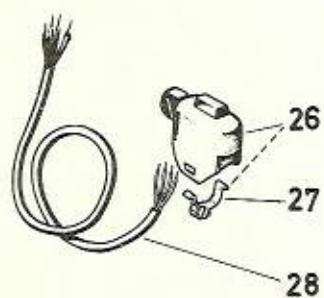
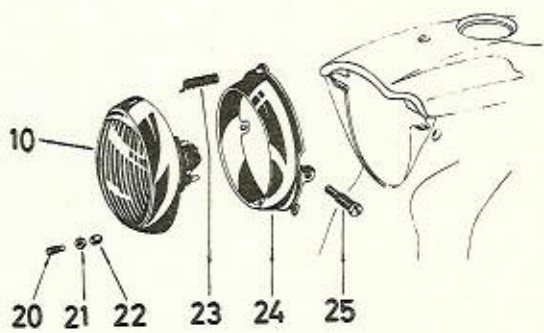
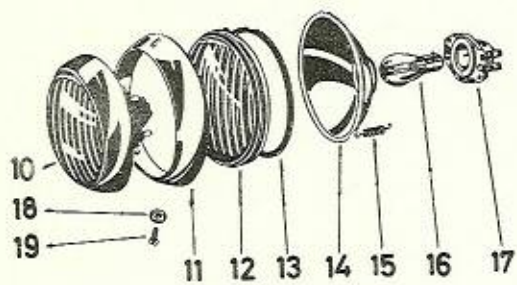


MV/50/2

(for models without stop light)

Ref. No.	Part No.	Description	Requid. No.	Note
-	360.4.50.000.0	Flywheel magneto generator compl. (Bosch 0212 112 025) (with cone 1:5)	1	
1	350.3.52.005.0	Supressor cable plug	1	
1a	050.5206	Securing spring (inside cable plug)	1	
1b	350.1.52.006.1	Rubber cover	1	
2	050.5207	Ignition cable 5 mm dia. (530 long)	p.m.	
2a	350.1.52.007.1	Rubber cap	1	
3	51.1.5703	Soft rubber terminal (two row)	1	
4	352.2.10.010.1	Rubber socket	1	
7	360.2.50.012.2	Ignition-armature	1	
7a	360.2.50.019.1	Rubber cap	1	
8	{ 900.3951	Washer 10/4, 3/1	3	
	{ 900.3253	Serated lock washer J 4, 3 DIN 6798	N 3	
9	27458	Lens head screw AM4x15 DIN 85	N 3	
10	302.1.50.013.2	Condenser	1	
11	360.2.50.011.2	Light armature	1	
12	302.2.50.015.0	Contact set compl.	1	
14	364.4.50.618.1	Lubricator felt pad	1	
15	24802	Washer 4, 3 DIN 433	N 2	
16	{ 900.3946	Spacer shim 8/4, 3/0, 1	}	as requid.
	{ 900.3946.2	Spacer shim 8/4, 3/0, 2		
17	100.5599	Securing spring	1	
18	360.2.50.010.2	Flywheel	1	
19	900.4503	Woodruff key 3x3,7 DIN 6888	N 1	
20	100.1.1235	Special washer	1	
21	900.2011	Hexagon nut M10x1 DIN 934-8G	N 1	
22	900.1133	Hexagon head screw M3x10 DIN 933	N 1	
25	900.3003	Washer 3,7 DIN 125	N 3	

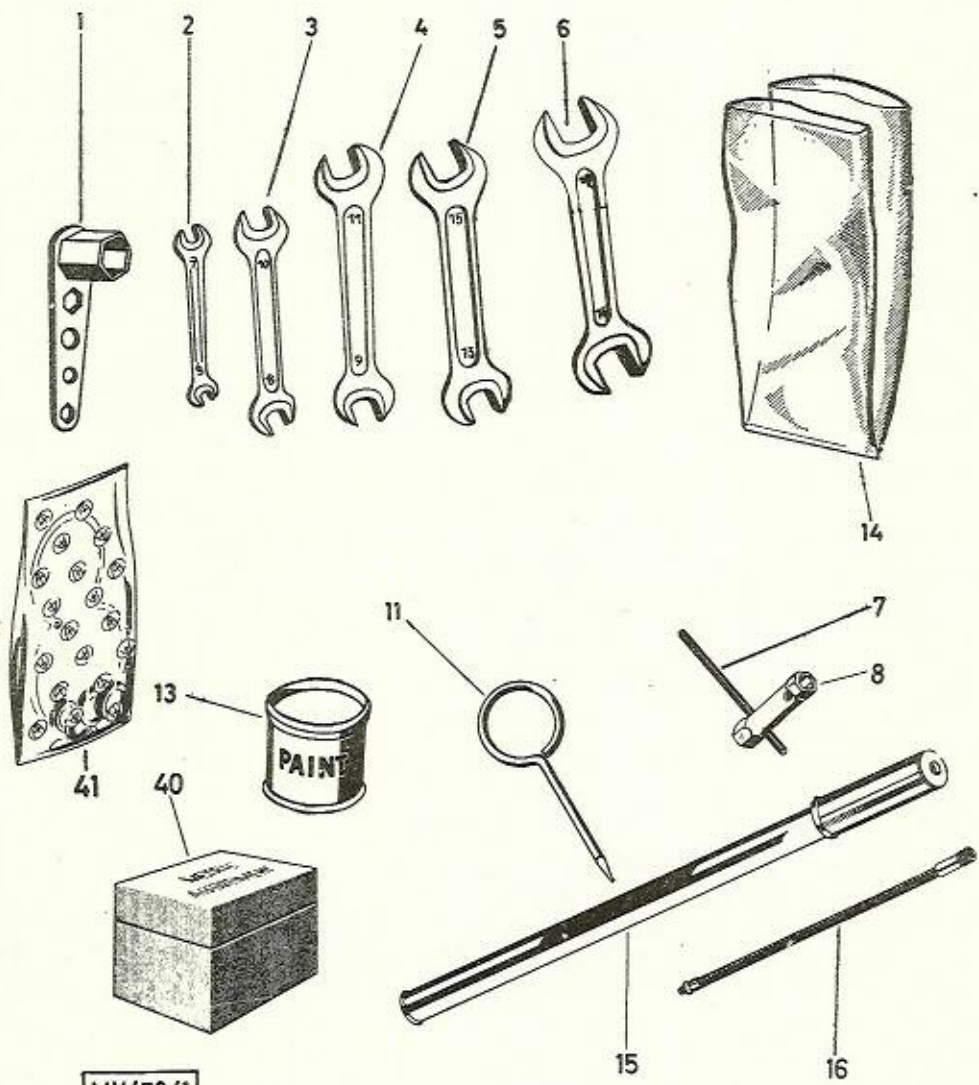
Ref. No.	Part No.	Description	Requd. No.	Note
26	900.3203	Spring ring B3 DIN 127	N 1	
27	24770	Hexagon nut M3 DIN 934	N 1	
28	28881	Fillister head screw M4x10 DIN 84	N 1	
29	{ 22796	Spring ring B4 DIN 127	N 1	
	{ 24793	Washer 4,3 DIN 125	N 1	
		Rubber cap		
		Soft rubber terminal (two rows)		
		Rubber socket		
		Friction-structure		
		Rubber cap		
		Washer 10x4,3		
		Special lock washer 1 1/2 x 3/8 DIN 934		
		Iron head screw M3x5 DIN 913		
		Condenser		
		Light structure		
		Contact and comp.		
		Insulator felt pad		
		Washer 4,3 DIN 913		
		Spacer arm 8x4,3x1,2		
		Spacer arm 8x4,3x1,2		
		Securing spring		
		Washer		
		Woodruff key 3x5,5 x 1/2 DIN 6888		
		Special washer		
		Hexagon nut M10x1 DIN 934-B2		
		Hexagon head screw M10x1 DIN 913		
		Washer 3,7 DIN 125		



VSD/53/1

Ref. No.	Part No.	Description	Requd. No.	Note
10	050.5300.0	Headlamp interior parts compl. (Hella) with lamp holder, but without bulb	1	
11	050.5303	Headlamp rim	1	
12	050.5304	Headlamp glass	1	
13	050.5306	Rubber packing 93/84/1	1	
14	050.5308	Reflector	1	
15	050.5309	Retaining spring	1	
16	900.0721	Bulb Bilux 6 V 15/15 W	1	
17	050.5319.0	Lamp socket	1	
18	100.5311	Washer for headlamp attachment	2	
19	28721	Oval countersunk head screw M4x8 DIN 91	N 2	
20	901.1942	Grub screw M6x22 DIN 417	N 1	
21	24773	Hexagon nut M6 DIN 934	N 1	
22	360.1.30.046.1	Rubber cap	1	
23	360.1.30.041.1	Thrust spring, 9 dia., 30 long	1	
24	360.1.30.040.1	Intermediate ring for headlamp	1	
25	360.1.30.060.1	Pivot screw (M8x14x16)	2	
26	357.1.53.017.0	Combined switch compl.	1	
27	357.1.53.018.0	Shackle compl.	1	
28	900.0736/07	Dimmer switch cable compl. (6 wires, 670 long)	p.m.	
29	350.8.57.000.0	Harness compl.	1	
30	364.1.57.001.0	Soft rubber terminal (four rows)	1	
35	900.0727	Rattle 6V	1	
36	24927	Hexagon head screw M6x12 DIN 933	N 1	
38	900.3212	Curved washer A6 DIN 137	N 1	
39	24773	Hexagon nut M6 DIN 934	N 1	

Ref. No.	Part No.	Description	Requd. No.	Note
40	352.1.55.000.0	Rear reflector compl. (Hella SKR 43)	1	
41	352.1.55.000.2	Housing for rear reflector (with rear reflector and window)	1	
42	28877	Oval head countersunk screw AM4x10 DIN 88	N 1	
43	900.3942	Fibre securing 7/4 mm dia.	1	
44	352.1.55.018.2	Rear lamp holder	1	
45	352.1.55.017.1	Rubber base	1	
46	352.1.55.050.1	Intercostal plate (70x20 mm)	1	
47	900.2105	Hexagon nut M5 DIN 555	N 2	
48	22803	Internal toothed lock washer J5,3 DIN 6797	N 2	
49	900.1209	Fillister head screw AM5x18 DIN 84 - 8G	N 2	
50	901.0765	Bulb, 6 V/2 W	1	



MV/70/1

Ref. No.	Part No.	Description	Requd. No.	Note
-	050.2.7010.0	Set of tools compl.	1	
1	050.2.7021	Socket wrench for spark plug	1	
2	19599	Wrench 6/7 DIN 895	N 1	
3	10181	Wrench 8/10 DIN 895	N 1	
4	24324	Wrench 9/11 DIN 895	N 1	
5	900.7011	Wrench 13/15 DIN 895	N 1	
6	24323	Wrench 14/17 DIN 895	N 1	
7	050.7022	Pin 6 mm dia., 115 long	1	
8	350.1.70.008.1	Socket wrench 10/11	1	
11	050.2.7021	Screw driver	1	
13	{ 900.0237/10	Touch-up paint, coral, RAL 3000, 1/8 kg (0,276 lbs)	as requd. ^x	
	{ 900.0208/10	Touch-up paint, black, RAL 9005, 1/8 kg (0,276 lbs)		
	{ 900.0251/10	Touch-up paint, beige, RAL 1001, 1/8 kg (0,276 lbs)		
14	330.1.70.003.1	Tool bag	1	
15	050.7024.0	Tire pump	1 ^x	
16	050.7023.2	Tire pump tube, 200 mm long	1 ^x	
40	810.000	Metric assortment (Nut, bolt and screw assortment)	as requd. ^x	

44 302.2.10.210.0

SAVED SET.

^x Not included

Part No.	Description	Quantity	Unit Price	Total
1	Set of tools complete	1	0.00	0.00
2	Socket wrench for square pin	1	0.00	0.00
3	Wrench 6/7 DIN 892	1	0.00	0.00
4	Wrench 8/9 DIN 892	1	0.00	0.00
5	Wrench 9/11 DIN 892	1	0.00	0.00
6	Wrench 12/15 DIN 892	1	0.00	0.00
7	Wrench 14/17 DIN 892	1	0.00	0.00
8	Pin 6 mm dia., 115 long	1	0.00	0.00
9	Socket wrench 10/11	1	0.00	0.00
10	Screw driver	1	0.00	0.00
11	Touch-up paint, coral RAL 3000, 1/8 lb (0.275 lbs)	1	0.00	0.00
12	Touch-up paint, black RAL 9005, 1/8 lb (0.275 lbs)	1	0.00	0.00
13	Touch-up paint, beige RAL 1001, 1/8 lb (0.275 lbs)	1	0.00	0.00
14	Tool bag	1	0.00	0.00
15	Tire pump	1	0.00	0.00
16	Tire pump hose, 500 mm long	1	0.00	0.00
17	Ball's assortment (nut, bolt and screw assortment)	1	0.00	0.00

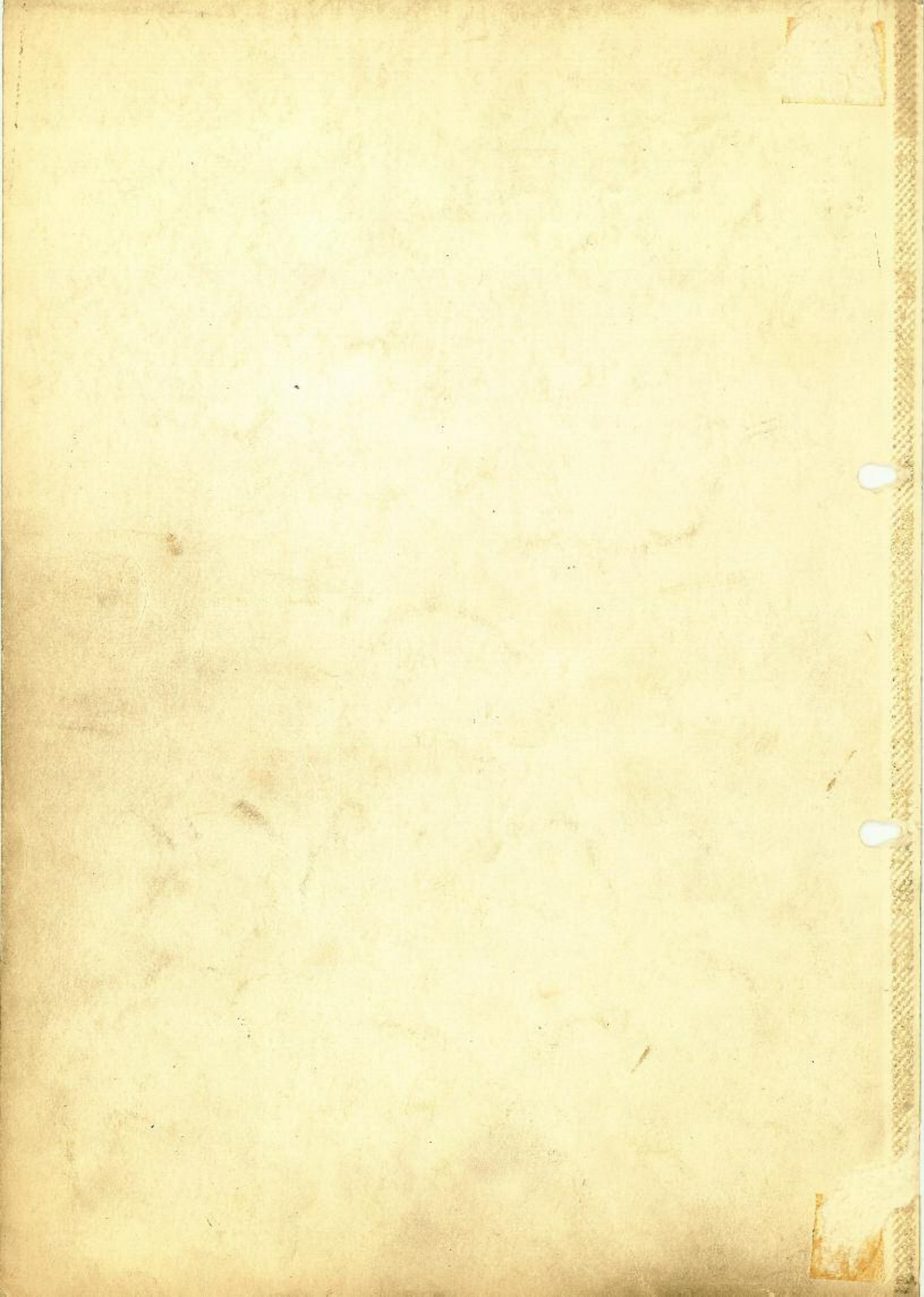
as required

as required

as required

as required

X Not included





Spare parts - Modification notice



Service Graz

Order No. 2.60.45/003

DISTRIBUTOR

DATE Mars 1972

PAGE 1

Spare parts catalogue (model) England				Re:					
VS50D, Edition 1968				Sealing of the generator base plate is changed					
MS50 Edition 1968				into a Labyrinth gland					
Line	Page Group	Ref.No. Pos.	Old spare part No.	O X	New spare part No.	Remarks As from	M	Designation	
1	13	10	350.4.10.061.2	}				Blower base plate	
2	13	11	050.1.1087					Felt washer	
3	13	14	350.4.10.072.1					Blower fan wheel	
4	9	13	350.7.10.092.2					Chain safety bow	
5	9	14	900.1308					MS50D → 7818241	Fillister head screw
6	9	15	29190					MS50 → 6086398	Spring ring
7	9	15a	24803					VS50D → 9118560	Washer
8	10	22	901.1302					Fillister head screw	
9	10	23	900.3257					Serrated lock washer	
10	10	24	900.2105					Hexagon nut	
11				O	350.5.10.061.1	7818242 →	1	Blower base plate	
12				O	350.5.10.072.1	6086399 →	1	Blower fan wheel	
						9118561 →			

*Jointly used, the new base plate and the new fan wheel replace the type used until now.



Spare parts - Modification notice



Service Graz

Order No. 2.60.45/006

DISTRIBUTOR

DATE April 1972

PAGE 1

Spare parts catalogue (model) England
VS50D/DKH Edition April 1968

Re: New lighting specifications for Great Britain:
Modified magneto and crankshaft

Line	Page Group	Ref.No. Pos.	Old spare part No.	O X	New spare part No.	Remarks As from	M	Designation
1	17	14	360.7.10.015.0			→ 9115 883		Crankshaft compl.
2			360.2.10.115.0			9115 884 →		Crankshaft compl.
3					360.3.10.115.0	91187553 →		Crankshaft compl.
4	83		360.4.50.000.0					Flywheel magneto generator compl.
5	83	7	360.2.50.012.2					Ignition armature
6	83	10	302.1.50.013.2					Condenser
7	83	11	360.2.50.011.2			→ 9118753		Light armature
8	83	18	360.2.50.010.2					Flywheel
9	87	16	900.0721					Bulb Bilux 6V 15/15W
10	87	26	357.1.53.017.0					Combined switch compl.
11	87	29	350.8.57.000.0					Harness compl.
12	88	50	901.0765					Bulb 6V/2W
13	83	--			360.5.50.000.0		1	Flywheel magneto generator compl.
14					364.4.50.512.2		1	Bosch 0 212 122 027
15					500.2.50.013.2		1	Ignition-armature
16					360.5.50.014.2		1	Bosch 2 204 211 030
17					364.4.50.510.2	9118754 →	1	Condenser Bosch 1 237 330 037
18					903.0751		1	Light-armature
19				O	357.3.53.117.0		1	Bosch 1 214 210 153
20					350.6.57.100.0		1	Flywheel Bosch 1 215 254 089
21					902.0712		1	Bulb Bilux 6V 18/18W
22				O	360.5.50.017.0		1	Combined switch compl. (ZKW 1337/II)
							1	Harness compl.
							1	Bulb 6V/3W
							1	Parts-Set Bosch 1 217 010 007 for Flywheel magneto generator

O = Old part to be used up, new part applicable to both types.
X = Part omitted, must no longer be used.
→ 5007 up to Engine-No.
5008 → from Engine-No.
→ 2480 up to Chassis-No.
2481 → from Chassis-No.

M = Motive of Modification: 1) New feature/New part 2) Change in dimension
3) Change in quality 4) Change in shape 5) Change in part No., only

Signature	in spare parts catalogue	in spare parts index	in spare parts store
-----------	--------------------------	----------------------	----------------------



Spare parts - Modification notice



Service Graz

Order No. 2.60.45/008

DISTRIBUTOR

DATE May 1972

PAGE 1

Spare parts catalogue (model) England
Maxi Edition June 1971

Re: Manifold alteration

Line	Page Group	Ref. No. Pos.	Old spare part No.	O X	New spare part No.	Remarks As from	M	Designation	
1	19	32	349.1.15.030.1	}	}	}	}	Carburetor connecting sleeve H=50	
2	19	33a	349.1.15.022.1					→ 9957979	Paper gasket
3	19	34	349.1.15.021.1					→ 5220127	Gasket (3m/m thick)
4	11	47a	902.1968						Fixing stud M6x18 DIN 835-8G
5					349.1.15.130.1		1	Carburetor connecting sleeve H=53	
6					349.1.15.122.1	→ 9957980 → → 9969000	1	Gasket (hard paper 0,5m/m thick) *	
7					900.1915	→ 5600000 → → 5220128 →	2	Fixing stud M6x15 DIN 835-8G	

Spare parts catalogue (model) England
MS50D Edition March 1971
VS50D/DKH Edition April 1968

Re: Replacement of rubber stop against damping spring

8	11	13	350.1.30.132.1	MSD MSV	→ 7818301 → 6089697			Stop rubber
9	63	13	350.1.30.132.1	VSD	→ 9118883			Stop rubber
				350.1.30.131.1	{ 7818302 → 6089698 → 9118884 →		1	Damping spring

*
The new manifold in connection with the new gasket
replaces that manifold used up to now.

O = Old part to be used up, new part applicable to both types.
X = Part omitted, must no longer be used.
→ 5007 up to Engine-No.
5008 → from Engine-No.
→ 2480 up to Chassis-No.
2481 → from Chassis-No.

M = Motive of Modification: 1) New feature/New part 2) Change in dimension
3) Change in quality 4) Change in shape 5) Change in part No., only

Signature	in spare parts catalogue	in spare parts index	in spare parts store
-----------	--------------------------	----------------------	----------------------