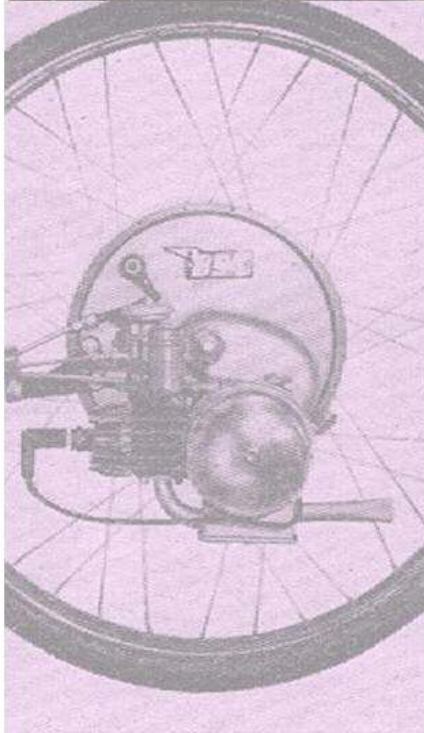


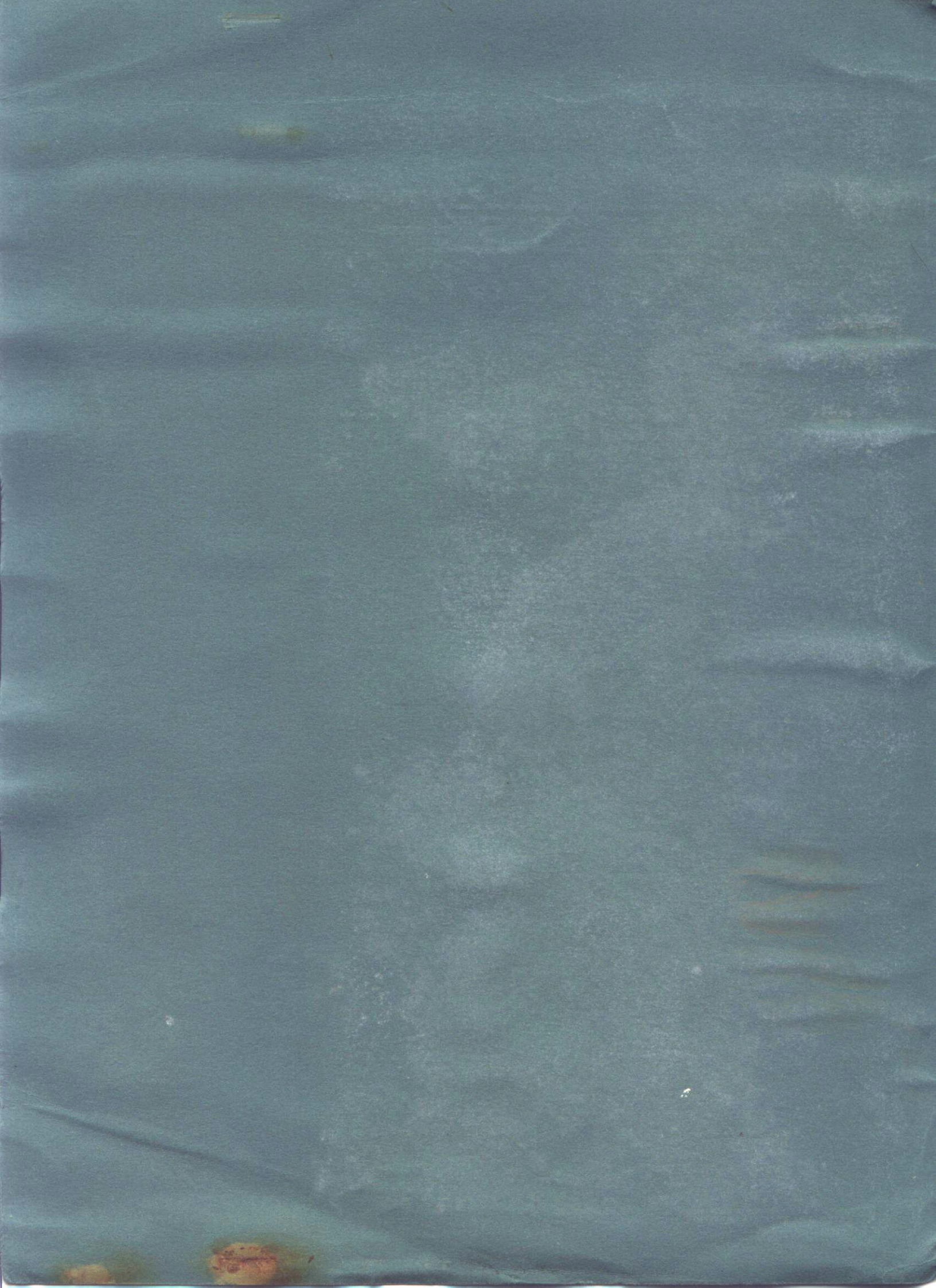
IceniCAM Information Service



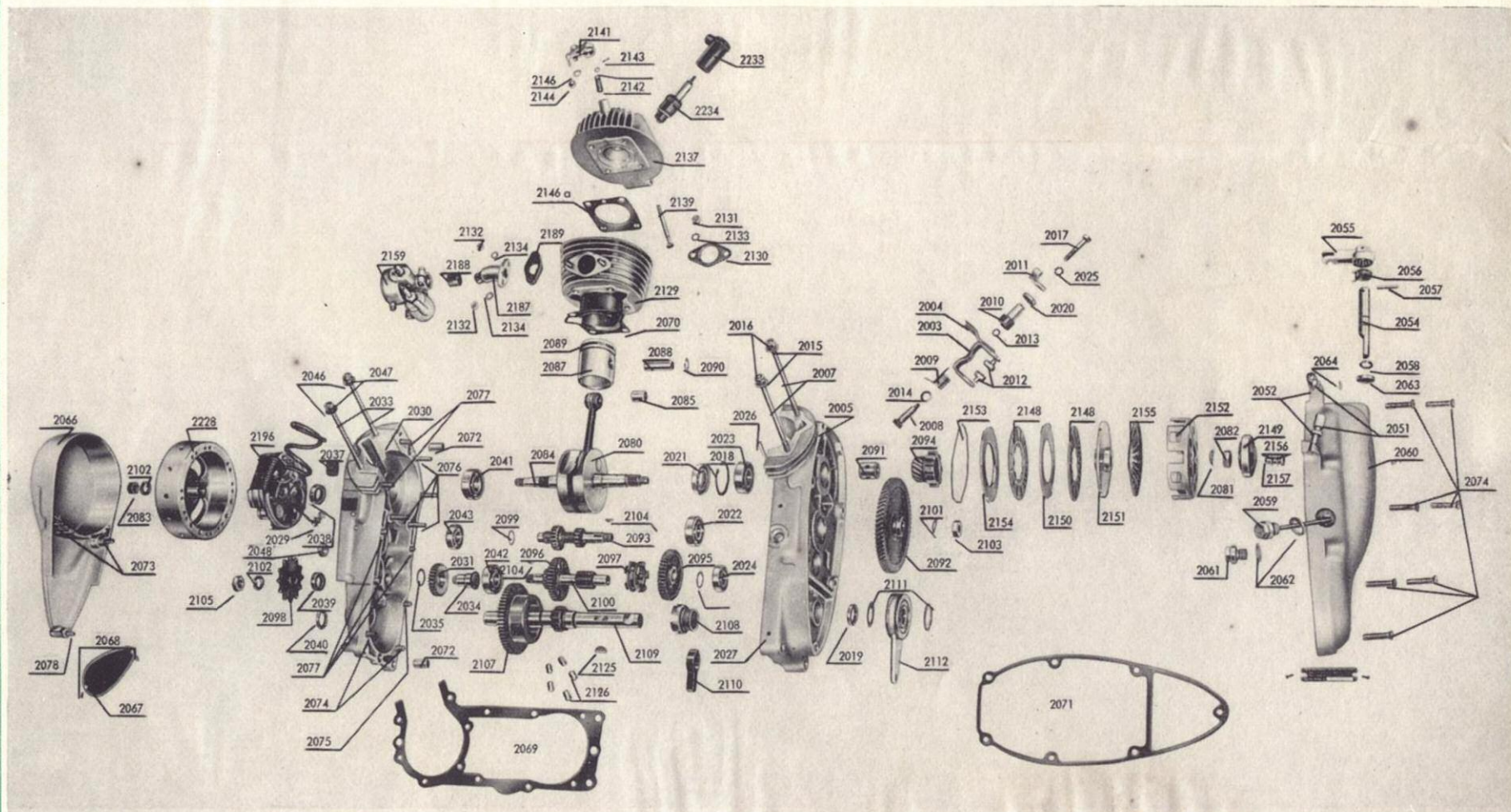
www.icenicam.org.uk

PHILLIPS
Gadabout

SPARE PARTS LIST



PHILLIPS *Gadabout*



Exploded view and part numbers of engine unit.



PARTS LIST

Sheet No. 1. Date NOV 1, 1957

PART No.	DESCRIPTION	RETAIL PRICE			PER
		£	s.	d.	
504	Engine complete	38.	2.	1.	ea.
2001	Half case complete - Clutch side (comp. parts 2002-2027)	7.	10.	7.	ea.
2002	Gear switch clamp complete (comp. parts 2003-2004)	2.	9.		ea.
2003*	Gear switch clamp only	2.	4.		ea.
2004*	Gear shift impact plate	6.	5.		doz.
2005	Half case only - clutch side	3.	18.	10.	ea.
2006	Sleeve for crank spindle (clutch side)	3.	9.		ea.
2007	Cylinder tie rods	1.	6.		ea.
2008*	Gear change trunnion-screw	1.	8.		ea.
2009*	Torsion Spring	1.	1.		ea.
2010	Gear shift control shaft	4.	8.		ea.
2011*	Gear change shift lever (engine end)		9.		ea.
2012*	Hardened slide for shift lever	5.	1.		ea.
2013*	Gear shift seal ring (rubber)	6.	5.		doz.
2014	Washer	1.	3.		doz.
2015	Cylinder tie rod washer	3.	9.		gross.
2016	Cylinder tie rod nuts	1.	6.		doz.
2017	Hex. Hd. Screw for gear shift control shaft	6.	5.		doz.
2018	Crankshaft circlip		9.		ea.
2019*	Shaft gasket (oil seal) 22 x 16 x 4 mm	4.	5.		ea.
2020*	Shaft gasket (oil seal) 16 x 10 x 4 mm	4.	5.		ea.
2021*	Shaft gasket (oil seal) 35 x 17 x 7 mm	6.	6.		ea.
2022	Ball bearing (crank shaft, clutch side)	10.	9.		ea.
2023	Ball bearing (gear countershaft, clutch side)	11.	5.		ea.
2024	Ball bearing (indexing gear shaft, clutch side)	10.	9.		ea.
2025	Spring washers for gear shift control shaft	7.	5.		gross.
2026	Half case taper pin	2.	4.		doz.
2027	Ventilation insert	3.	4.		gross.

* included in Spares Kit No. 1.



PARTS LIST

Sheet No. -2.

NOTE, 1957

PART No.	DESCRIPTION	RETAIL PRICE			PER
		£	s.	d.	
<u>ENGINE COMPONENTS</u> (see illustration)					
2028	Half case - Magneto side (Comp. parts 2029-2048)	6.	9.	2.	ea.
2029	Lighting cable duct		1.	1.	ea.
2030	Half case only, magneto side	2.	19.	10.	ea.
2031**	Idler gear		9.	10.	ea.
2032	Sleeve for crank spindle (magneto side)		3.	5.	ea.
2033*	Cylinder tie rods		1.	6.	ea.
2034*	Idler gear bearing pin		8.	10.	ea.
2035	Distance washer		3.	1.	doz.
2036	Rubber cover for lighting cable duct		3.	1.	doz.
2037	Rubber insulating plate		6.	2.	doz.
2038*	Shaft gasket (oil seals) 24 x 15 x 7 mm		4.	8.	ea.
2039*	Shaft gasket (oil seals) 22 x 12 x 7 mm		4.	8.	ea.
2040	Shaft gasket for crank spindle		4.	6.	ea.
2041	Ball bearing (crankshaft magneto side)		12.	2.	ea.
2042	Ball bearing (gear countershaft, magneto side).		11.	0.	ea.
2043	Ball bearing (indexing gear shaft, magneto side)		10.	9.	ea.
2044*	Fan disc washer		7.	8.	gross.
2045	Screw		1.	3.	doz.
2046	Cylinder tie rod washer		3.	9.	gross.
2047*	Cylinder tie rod nuts		1.	6.	doz.
2048	Hex. Nut for idler gear		3.	9.	gross.
2049	Clutch cover complete (inc. parts 2050-2064)		3.	2. 5.	ea.
2050	Cable adjusting screw complete (inc. parts 2051-2052)		12.	0.	doz.
2051	Cable adjusting screw		10.	3.	doz.
2052	Cable adjusting nut		1.	9.	doz.
2053	Coupling wrench complete (inc. parts 2054-2058)		11.	6.	ea.

* included in Spares Kit No. 1.

** included in Spares Kit No. 2.



PARTS LIST

Sheet No. 3 Date NOVEMBER 1957

PART No. ENGINE COMPONENTS (see illustration)	DESCRIPTION	RETAIL PRICE			PER
		£	s.	d.	
2054*	Clutch cam only	4.	8.		ea.
2055	Clutch coupling lever	4.	3.		ea.
2056*	Clutch cam spring	1.	1.		ea.
2057*	Clutch cam arm-retaining pin	1.	6.		ea.
2058*	Clutch cam circlip	1.	6.		ea.
2059	Dip stick	2.	4.		ea.
2060	Clutch cover	2	3.	3.	ea.
2061*	Sump drain plug	1.	5.		ea.
2062*	Drain plug washer	6.	0.		doz.
2063	Shaft gasket for clutch cam	4.	6.		ea.
2064*	Clutch cam spring retaining pin	1.	6.		doz.
2065	Magneto & Chain cover complete	1.	4.	6.	ea.
2066	Magneto cover	1.	2.	4.	ea.
2069*	Casing gasket	8.	6.		doz.
2070*	Cylinder gasket (base)	3.	9.		doz.
2071*	Clutch cover	7.	7.		doz.
2072	Crank case guide sleeve	1.	1.		ea.
2073*	Magneto cover screws	2.	2.		doz.
2074*	Clutch cover screw	2.	7.		doz.
2075*	Crankcase 35 mm screw	2.	7.		doz.
2076*	Crankcase 40 mm screw	3.	1.		doz.
2077*	Crankcase 45 mm screw	3.	1.		doz.
2078	Magneto cover & chainguard screw	2.	2.		doz.
2079*	Fan disc washer	7.	5.		gross.
2080**	Crankshaft assembly	5.	8.	6.	ea.
2081*	Washer for clutch retaining nut	1.	3.		doz.
2082*	Clutch retaining nut	3.	1.		doz.
2083*	Magneto retaining nut	3.	1.		doz.
2084	Flywheel location peg	1.	6.		doz.

* included in Spares Kit No. 1. ** included in Spares Kit No. 2.



PARTS LIST

Sheet No. 4 Date NOVEMBER 1957

PART No. <u>ENGINE COMPONENTS</u> (see illustration)	DESCRIPTION	RETAIL PRICE			PER
		£	s.	d.	
2085	Gudgeon pin sleeve	3.	1.		ea.
2086**	Piston complete (comp. parts 2087-2090)	2.	5.	2.	ea.
2087*	Piston only	1.	10.	9.	ea.
2088**	Gudgeon pin	6.	7.		ea.
2089*	Piston ring	4.	3.		ea.
2090*	Gudgeon pin circlip	2.	0.		doz.
2091*	Crankshaft pinion sleeve	4.	8.		ea.
2092	Secondary drive gear wheel	1.	18.	3.	ea.
2093*	Gear countershaft	1.	11.	5.	ea.
2094**	Clutch primary drive pinion	19.	1.		ea.
2095*	Gear wheel I	13.	11.		ea.
2096*	Gear wheel II	1.	4.	5.	ea.
2097*	Gear shift dog	1.	7.	4.	ea.
2098*	Chain drive sprocket	11.	6.		ea.
2099	Distance washer for counter shaft	6.	2.		doz.
2100*	Indexing gear shaft	17.	1.		ea.
2101	Locking washer for indexing gear shaft	7.	5.		gross.
2102	Locking washer for gear countershaft	1.	3.		doz.
2103	Flat Hex. nut for indexing gear shaft	3.	9.		gross.
2104	Woodruff key for gear countershaft	1.	3.		doz.
2105	Hex. nut for gear countershaft	3.	1.		doz.
2106	Gear wheel with crank spindle complete (comp. parts 2107-2111)	3.	2.	2.	ea.
2107**	Pedal drive gear wheel	1.	8.	3.	ea.
2108	Crank spindle idler cover	1.	8.		ea.
2109	Crank spindle	1.	13.	1.	ea.
2110	Drag spring	8.	2.		doz.
2111	Distance washer for crank spindle	6.	5.		doz.
2112	Brake arm complete	1.	6.	9.	ea.
2114	R.H. Crank	7.	1.		ea.

* included in Spares Kit No. 1. ** included in Spares Kit No. 2.



PARTS LIST

Sheet No. 5 Date NOV. 1957.

PART No.	DESCRIPTION	RETAIL PRICE			PER
		£	s.	d.	
<u>ENGINE COMPONENTS (see illustration)</u>					
2115	Cotter pin	3.	6.		doz.
2117	Cotter pin nut	3.	1.		doz.
2118	Cotter pin washer	2.	0.		doz.
2120	L.H. crank	7.	1.		ea.
2125	Woodruff key for crank spindle	3.	1.		doz.
2126	Short roller	6.	2.		doz.
2127	Distance washer for crank spindle	4.	7.		doz.
2129**	Cylinder with liner	4. 16.	7.		ea.
2130*	Exhaust gasket	8.	1.		doz.
2131*	Exhaust attachment nuts (engine end)	1.	6.		doz.
2132*	Carburettor junction nut	1.	6.		doz.
2133*	Exhaust attachment washer	3.	9.		gross.
2134*	Carburettor junction washer	3.	9.		gross.
2135	Carburettor junction fan disc washer	3.	9.		gross.
2136*	Cylinder head complete with decompressor valve	1. 8.	6.		ea.
2137	Cylinder head only	1. 3.	10.		ea.
2138	Decompressor valve complete (comprising 2139-2146)	5.	1.		ea.
2139*	Decompressor valve only	1.	11.		ea.
2140	Decompressor operating unit complete (comp. parts 2141-2146)	3.	5.		ea.
2141	Decompressor operating arm and support	3.	4.		ea.
2142	Decompression valve spring	1.	6.		doz.
2143	Split pin for decompressor valve	3.	9.		gross.
2144	Screw for decompressor operating arm support	14.	8.		gross.
2145	Washer for decompressor operating arm support	3.	9.		gross.
2146*	Decompressor valve washer	3.	9.		gross.
2146A*	Cylinder head gasket	1.	3.		ea.

* included in Spares Kit No.1. ** Included in Spares Kit No.2.



PARTS LIST

Sheet No. 6 Date NOVEMBER 1957.

PART No.	DESCRIPTION	RETAIL PRICE			PER	
		£	s.	d.		
<u>ENGINE COMPONENTS</u> (see illustration)						
2147	Clutch complete (comp. parts 2148-2157)	2.	11.	1.	ea.	
2148*	Clutch driving disc		7.	2.	ea.	
2149*	Clutch thrust bearing		5.	6.	ea.	
2150*	Clutch steel disc		2.	2.	ea.	
2151	Support plate		16.	2.	ea.	
2152	Clutch casing		9.	4.	ea.	
2153*	Clutch circlip		6.	2.	doz.	
2154	Clutch pressure plate		5.	6.	ea.	
2155*	Clutch spring plate		3.	9.	ea.	
2156	Distance disc for compression cover		9.	4.	doz.	
2157*	Clutch compression cover		11.	9.	doz.	
2158	Carburettor complete (comp. parts 2159, 2187-2189)		2.	10.	7.	ea.
2159**	Carburettor only		2.	4.	10.	ea.
2160	Carburettor casing		19.	5.	ea.	
2161	Carburettor casing cover		2.	5.	ea.	
2162	Throttle cable bend		5.	1.	ea.	
2163	Knurled nut for throttle cable bend		8.	2.	doz.	
2164*	Carburettor cap attachment screw		6.	2.	doz.	
2165	Throttle slide		3.	9.	ea.	
2166	Throttle slide spring		8.	2.	doz.	
2167*	Spray nozzle		7.	8.	ea.	
2168	Grub-screw for spray nozzle end		6.	2.	doz.	
2169*	Rubber seal ring for carburettor		11.	9.	doz.	
2170	Throttle slide screw		8.	2.	doz.	
2171	Safety spring		6.	2.	doz.	
2172	Float		7.	7.	ea.	
2173	Float cover		5.	1.	ea.	
2174	Petro feed nipple		2.	7.	ea.	
2175*	Fuel filter screen for carburettor		1.	6.	ea.	

* included in Spares Kit No.1. ** included in Spares Kit No.2.

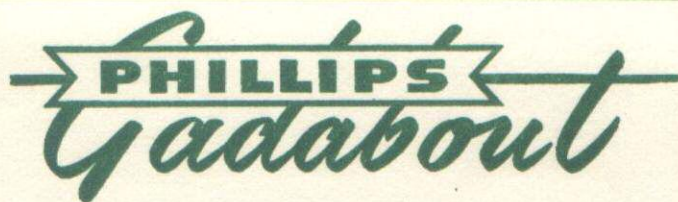


PARTS LIST

Sheet No. 7 Date NOV. 1957

PART No.	DESCRIPTION	RETAIL PRICE			PER
		£	s.	d.	
<u>ENGINE COMPONENTS</u> (see illustration)					
2176	Cap Screw	4.	8.		Doz.
2177	Fibre washer for petrol feed nipple	4.	8.		doz.
2178*	Control jet (specify size 50,52 or 55)	3.	4.		ea.
2179	Float chamber gasket	1.	3.		ea.
2180	Choke	1.	3.		ea.
2181	Choke washer	6.	2.		doz.
2182	Choke set screw	8.	6.		doz.
2183	Air filter	6.	11.		ea.
2184	Filter screw	1.	3.		ea.
2185	Filter washer	4.	8.		doz.
2186	Clamping screw	1.	3.		ea.
2187*	Carburettor junction	5.	1.		ea.
2188	Insulating bush	1.	1.		ea.
2189*	Carburettor junction gasket	2.	7.		ea.
2192	Flywheel magdyno	11.	13.	5.	ea.
2195	Armature-plate unit complete	6.	18.	0.	ea.
2197	Ignition armature with coil	2.	17.	3.	ea.
2200	Lighting armature with coil	18.	1.		ea.
2201	Cheese-head screws for armature attachment (4 mm dia x 23 mm long)	2.	9.		doz.
2202	Spring-washer for armature attachment	1.	1.		doz.
2203*	Condenser	7.	3.		ea.
2204	Cable connecting condenser to contact-breaker	8.	6.		doz.
2205*	Stationary contact-carrier with contact	3.	9.		ea.
2206	Cheese-head screw (4 mm dia x 12 mm long)	2.	5.		doz.
2207	Spring washer (4 mm)	11.	9.		grs.
2208	Steel-washer (4 mm)	2.	5.		doz.
2209	Bearing pin for rocker arm	2.	0.		ea.
2210*	Rocker arm with contact, spring, bearing bush & fibre heel	3.	10.		ea.

* included in Spares Kit No. 1.



PARTS LIST

Sheet No. 8 Date NOV. 1957.

PART No.	DESCRIPTION	RETAIL PRICE			PER
		£	s.	d.	
<u>ENGINE COMPONENTS</u> (see illustration)					
2211.	Upper compensating washer 0.1 mm thick	12.	4.		grs.
2212	Upper compensating washer 0.2 mm thick	12.	4.		grs.
2213	Upper compensating washer 0.3 mm thick	11.	9.		grs.
2214	Lower shim	2.	5.		doz.
2215	Spring-clip	4.	7.		doz.
2216	Hex. bolt (3 mm dia x 10 mm long) for contact-carrier-terminal	2.	5.		doz.
2217	Steel washers (3 mm) for contact-carrier-terminal	11.	9.		grs.
2218	Large insulating washers for contact-carrier-terminal	2.	5.		doz.
2219	Small insulating washers for contact-carrier-terminal	11.	9.		grs.
2220	Spring washer for contact-carrier-terminal	2.	5.		doz.
2221	Hex. nut (3 mm) for contact-carrier-terminal	3.	0.		doz.
2222*	Lubricating-pad with spring-steel attachment-strip	1.	3.		ea.
2223	Attachment rivet for lubricating-pad unit	5.	6.		grs.
2224	Washer for lubricating-pad unit	2.	0.		doz.
2225	H-T ignition cable	2.	0.		ea.
2227	Lighting wire	2.	5.		ea.
2229	Flywheel complete with cam	5.	17.	9.	ea.
2231	Cam only	18.	4.		ea.
2232	Cam rivets	11.	9.		grs.
2233*	Sparking plug cap	2.	8.		ea.
2234*	Sparking plug	6.	4.		ea.
Z504-1	Protecting spring plate	2.	0.		ea.

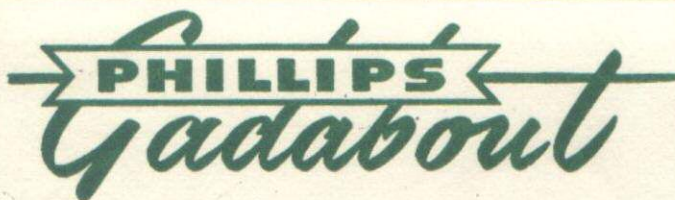
* included in Spares Kit No. 1.



PARTS LIST

Sheet No. 9 Date NOV. 1957

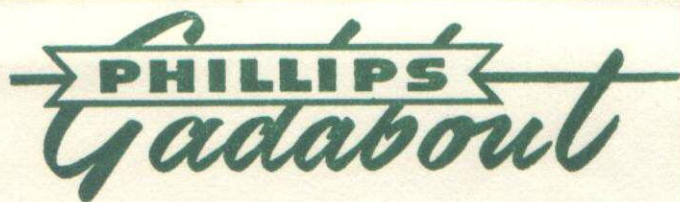
PART No.	DESCRIPTION	RETAIL PRICE			PER
		£	s.	d.	
V.7001	Frame with engine mounting & tool box	8.	8.	9.	ea.
V.7004/5	Tool box cover	4.	1.		ea.
V.7006	Tool box knurled screw	1.	3.		ea.
<u>KICKSTAND ASSEMBLY</u>					
V.7016	Kick stand complete	11.	3.		ea.
V.7019	Kick stand spring	8.	10.		doz.
V.7020	Kick stand screw	8.	10.		doz.
V.7021	Kick stand washer	10.	3.		grs.
V.7022	Kick stand locking washer	6.	0.		grs.
V.7023	Kick stand Hex. nut	2.	1.		doz.
<u>TANK ASSEMBLY</u>					
V.7028	Tank complete with cap	2.	6.	11.	ea.
V.7031	Tank Strap	2.	9.		ea.
V.7032	Tank rubber strip	1.	1.		ea.
V.7035	Tank location tube	4.	5.		doz.
V.7036	Tank screw	4.	5.		doz.
V7036A	Tank locking plate	1.	6.		ea.
V.7037	Tank fuel pipe	1.	1.		ea.
V.7038	Tank petrol tap	7.	1.		ea.
V.7029	Tank filler cap	5.	6.		ea.
V.7033	Small rubber tank seat	4.	5.		doz.
V.7034	Large rubber tank seat	1.	7.		ea.
V.7011	Seat Pillar	4.	2.		ea.
V.7045	Saddle	1.	5.	11.	ea.



PARTS LIST

Sheet No. 10 Date Nov. 1957

PART No.	DESCRIPTION	RETAIL PRICE			PER
		£	s.	d.	
<u>MUDGUARD ASSEMBLY</u>					
V.7059	Front mudguard complete	1	7.	6.	ea.
V.7060	Front mudguard only	1.	2	9.	ea.
V.7387	Front mudguard top stay		2.	8.	pair
V.7061	Front mudguard side stay		3.	11.	ea.
V.7381	Front number plate		2.	2.	ea.
V.7062	Screws for front mudguards		1.	1.	set
V.7066	Rear mudguard complete	1.	19.	3.	ea.
V.7067	Rear mudguard only	1.	13.	9.	ea.
V.7068	Rear mudguard stay		4.	2.	ea.
V.7384	Rear number plate		1.	11.	ea.
V.7079	Rubber shim plate for rear mudguard		2.	1.	ea.
V.7083	Cable grommet for rear mudguard		13.	9.	grs.
<u>CARRIER ASSEMBLY</u>					
V.7105	Luggage Carrier complete		6.	2.	ea.
V.7106	Luggage Carrier top plate		12.	9.	ea.
V.7107	Luggage stay L.H.		6.	6.	ea.
V.7108	Luggage stay R.H.		6.	11.	ea.
V.7112	Luggage Carrier Hex. Head Screw		3.	5.	doz.
V.7113	Luggage Carrier hex. nut		2.	4.	doz.
V.7114	Luggage Carrier locking washer		1.	3.	doz.
V.7116	Aluminium cover plate		13.	10.	ea.
V.7122	Chain guard		9.	8.	ea.
V.7126	Chain guard hub part		7.	9.	ea.
V.7131	Chain guard screws		2.	0.	doz.
V.7349	Chain		13.	9.	ea.
V.7350	Chain connecting link			8	ea.



PARTS LIST

Sheet No. 11 Date NOV. 1957

PART No.	DESCRIPTION	RETAIL PRICE			PER
		£	s.	d.	
<u>FORK ASSEMBLY</u>					
663	Telescopic Fork	4.	6.	3.	ea.
F341X	Fork end tube only (without springs & bolts) (improved pattern)	16.	0.		ea.
F338X	Fork frame	19.	10.		ea.
N3212	Hex. locknut	1.	8.		ea.
N4003	Locknut	15.	0.		doz.
Q915	Compression spring	2.	0.		ea.
800	Handlebar bend	9.	5.		ea.
<u>LIGHTS, SPEEDOMETER AND HORN</u>					
V7167	Headlamp complete with speedometer	4.	4.	5.	ea.
V7163	Headlamp only	1.	11.	10.	ea.
V7178	Speedometer complete	2.	12.	7.	ea.
V7179	Speedometer head	1.	5.	7.	ea.
V7180	Speedometer cable		9.	2.	ea.
V7181	Speedometer drive	17.	3.		ea.
V7389	Speedometer/headlamp sealing ring	6.	5.		doz.
V7096	Rear lamp	5.	9.		ea.
V7177	Headlamp bulb 6v 15/15w	5.	6.		ea.
	+ P.T.	1.	3.		ea.
V7100	Rear lamp bulb 6.2v 0.3A		9.		ea.
	+ P.T.		2.		ea.
V7080	Lighting cable	3.	0.		ea.
V7182	Electric horn	11.	7.		ea.
<u>CONTROLS</u>					
V7187	Throttle grip with brake lever	19.	0.		ea.
V7205	Gear change grip with clutch lever & valve lifter	1.	7.	1.	ea.



PARTS LIST

Sheet No. 12 Date NOV. 1957

PART No.	DESCRIPTION	RETAIL PRICE			PER
		£	s.	d.	
	<u>CONTROLS CONT.</u>				
V7225	Throttle cable	2.	6.		ea.
V7233	Decompressor cable	1.	3.		ea.
V7239	Gear change cable	3.	4.		ea.
V7250	Clutch cable	3.	4.		ea.
V7258	Front brake cable	2.	1.		ea.
V7347	Lifting handle	7.	0.		ea.
	<u>WHEELS, TYRES AND RIMS</u>				
V7269	Front wheel complete	3.	0.	8.	ea.
820	Front hub	1.	18.	6.	ea.
V7303	Rear wheel complete	3.	9.	2.	ea.
821	Rear hub	2.	6.	11.	ea.
V7295/7329	Spokes, Front V7295, Rear V7329	17.	4.		grs.
V7294/7328	Rims, Front V7294, Rear V7328	1.	10.	5.	pair.
E123	Front hub spindle	9.	0.		doz.
E123X	Front hub spindle unit	4.	0.		ea.
E204	Front & rear hub fixed cone	9.	0.		doz.
W302	Front & rear hub shoe retaining washer	9.	0.		grs.
W801	Front & Rear hub washer	2.	2.		grs.
W901	Front & rear hub washer		11.		doz.
W1801	Front & rear hub washer	1.	6.		doz.
S833	Front & rear hub cable anchor pin	5.	2.		doz.
E124	Rear hub spindle	12.	0.		doz.
E124X	Rear hub spindle unit	4.	4.		ea.
E1021	Rear hub sprocket 26T	5.	6.		ea.
154	Pedals	10.	6.		pair
V7380	Licence holder	2.	6.		ea.
V7382	Clips to support front number plate	2.	6.		doz.



PARTS LIST

Sheet No. 13 Date NOV. 1957

PART No.	DESCRIPTION	RETAIL PRICE			PER
		£	s.	d.	
V7342	Rear brake rod	2.	2.		ea.
V7348	Air intake socket	2.	1.		ea.
V7356	Exhaust pipe complete with silencer	2.	19.	8.	ea.
V7357	Exhaust pipe only	2.	5.	5.	ea.
V7358	Silencing inset	3.	1.		ea.
V7359	Silencer stop jet	9.	1.		ea.
V7360	Exhaust pipe clip	1.	8		ea.
V7361	Exhaust pipe hanger plate	7.	8.		doz.
<u>TOOLS</u>					
714	8 way spanner	15.	0.		doz.
V7370	6 way spanner	1.	10.		ea.
V7371	Small box spanner with tommy bar	2.	0.		ea.
V7372	Large box spanner with tommy bar	2.	6.		ea.

