

Mobylette

Mobymatic

Mobyscooter

BETTER
VALUE

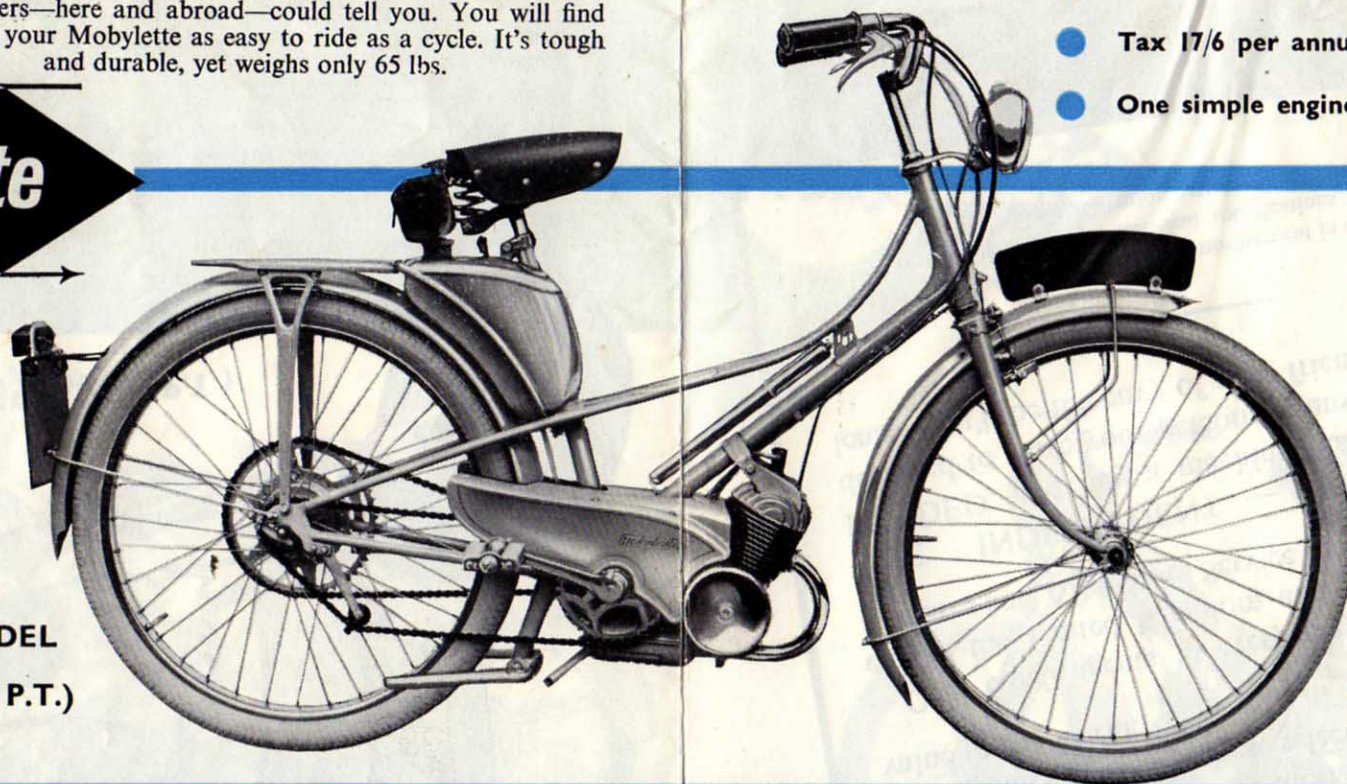
BETTER
QUALITY

BETTER
PERFORMANCE

BETTER
ECONOMY

Here's the answer to your daily travelling problem—and it's first rate for week-end excursions and holidays as well. The Mobylette gives you amazing value for money and outstanding reliability. It's the world's most successful moped, as over two million riders—here and abroad—could tell you. You will find your Mobylette as easy to ride as a cycle. It's tough and durable, yet weighs only 65 lbs.

Mobylette



- Speed 30 miles per hour approx.
- 200 miles per gallon approx.
- Tax 17/6 per annum.
- One simple engine control.

STANDARD MODEL
£45 . 19 . 6 (inc. P.T.)

DE LUXE MODEL
£52 . 19 . 6 (inc. P.T.)

STANDARD MODEL

SUPER SPECIFICATION !

Engine: 49 c.c. High Efficiency, chrome lined with flat-top piston.

Frame: Patent duplex top tube construction giving great strength and rigidity with light weight.

Transmission: $\frac{1}{2} \times .305$ chain.

Ignition: Flywheel magneto.

Tyres: White oversize cushion.

Brakes: Internal expanding hub-type at rear; caliper type at front.

Exhaust: Heavy gauge plated pipe to large capacity tubular silencer.

Lighting: Electric from flywheel.

Saddle: Large dimension, soft top.

Finish: Beige enamel and chrome.

Equipment: Tyre pump and tool kit.

Pedalling: By the movement of one simple control, the engine can be disconnected and the machine pedalled as easily as an ordinary cycle.

DE LUXE MODEL

As Standard Model but with addition of AUTOMATIC CENTRIFUGAL DIMOBY CLUTCH.

As pioneers of the moped, Motobecane have, through the technical knowledge gained from the world's largest moped production (OVER 1,200 MACHINES PER DAY), produced this new revolutionary transmission system.

Starting is simple, a dab at the pedal and the engine springs to life; open the throttle and the machine glides away with uncanny ease and silence. Close the throttle and apply the brakes and your Mobylette will come to rest with the engine ticking over.

So simple, yet so ingenious, the Dimoby system entirely eliminates pedalling under all normal conditions and enables the rider to concentrate upon the pleasure of riding the world's most advanced moped.

The 150 c.c. Moby Scooter has everything that the most fastidious and exacting enthusiast desires. Beautifully styled and designed to give maximum rider comfort, it has a performance and economy which must be experienced to be believed. Never was the French genius for combining good looks with practical efficiency more exemplified than by the Moby Scooter. Acclaimed by the experts it is undoubtedly the best 150 c.c. Scooter buy to-day!

Mobyscooter

150 c.c.



£149.19.6 (inc. P.T.)

Engine: Two stroke double transfer single cylinder, fan cooled, special cast iron lined aluminium cylinder. Capacity 150 c.c.

Transmission: Gear primary drive to gearbox; rear by roller chain fully enclosed.

Gearbox: Three-speed with multiplate clutch controlled by left-hand handlebar lever and twist grip.

Ignition: Flywheel magneto, high tension, with automatic advance.

Chassis: Single girder frame of electro-welded steel tubing with high front cowl giving full protection.

Mudguards: Heavy dome section affording adequate weather protection at all times.

Suspension: Front: Link with patented Neiman Rubber Rings. Rear: Swinging Arm with Evigdon Hutchinson Rubber Cushioning.

Wheels: Interchangeable, with balloon 3.5 x 10 tyres.

Brakes: Internal expanding hub brakes. Rear controlled by foot pedal; front by handlebar lever.

Electrical Equipment: 6-volt headlamp with dipping switch, rear lamp and horn.

Speedometer: Built into headlamp.

Finish: Attractively enamelled in cream/maroon. All bright parts chromium plated.

Equipment: Pillion seat, spare wheel. Comprehensive tool kit in large heavy duty steel container.

Optional Extras: Rear luggage carrier, chromium plated, £5. Front luggage carrier, stove enamelled, £2.5.0.

Weight: 216 lbs.

Speed: Approximately 45/50 m.p.h.

Fuel Consumption: Approximately 80/90 m.p.g.

FOR WORK OR PLAY . . .

or simple shopping expeditions, the choice is obviously . . . Mobyette. Whether 49 c.c. moped or super luxury 150 c.c. scooter you are sure of getting the best for your money—superb specification, wonderful economy and thousands of miles of trouble-free riding.

Study the various models and consider the prices—you'll find there's nothing to compare with them. Without doubt the Mobyette range of machines offers the best selection and finest value in the world.

Over 6,000 agents in every major town and city in the United Kingdom and Europe offer a Spares and After Sales Service second to none.

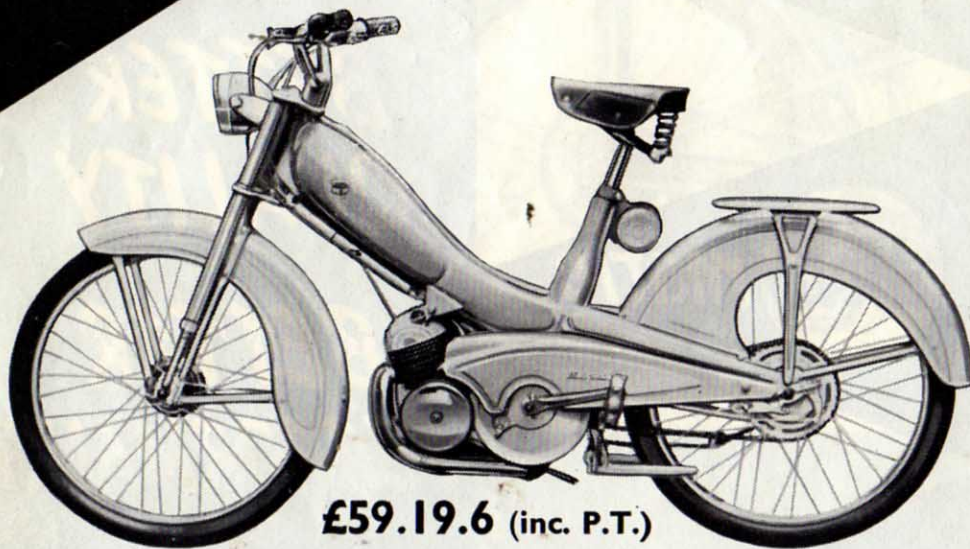
BE INDEPENDENT — BE MOBY-MINDED, and buy a machine that has been designed to solve your personal transport problems. You'll be the envy of your friends.

To ensure continual advance and detail improvement in our products, we reserve the right to alter technical specifications and designs without prior notice.

This superb addition to the Mobyette range offers luxury transport at very modest cost. Based on the highly successful Mobyomatic design and with the same beautiful blue and chrome finish, it will appeal to novice and expert alike. The Super de Luxe is fitted with the new Dimoby Automatic Clutch which, coupled with the AV7 engine of proved reliability and performance, guarantees the rider trouble-free economical motoring at lowest possible cost.

Mobyette

SUPER DE LUXE



£59.19.6 (inc. P.T.)

Engine: 49 c.c. high efficiency; chrome lined cylinder with flat-top piston; 1.35 b.h.p. at 3,400 r.p.m.

Frame: Patented all pressed steel, incorporating 1½ gal. fuel tank.

Transmission: Through fully automatic Dimoby clutch and ¼×.305 heavy-duty roller chain.

Ignition and Lighting: NOV1 high output flywheel magneto.

Forks: Telescopic with long travel to eliminate all road shocks.

Brakes: Powerful internal expanding, in plated hubs.

Wheels: Chromium plated rims with heavy gauge plated spokes.

Tyres: 23×2.00 balloon.

Handlebars: Of new and pleasing design with straight pull levers and twist grip throttle and decompressor control.

Cranks and Pedals: Heavily chromed, with white rubber steps.

Saddle: Large dimension soft top spring type.

Mudguards: Exceptionally deeply valanced heavy gauge dome section steel.

Equipment: Tyre pump, and tool kit in steel container attached to rear of frame.

Weight (dry): 82 b.

★ **Speed:** 30 m.p.h. approx.

★ **Fuel consumption:** 200 m.p.g. approx.

★ **Tax:** 17/6 per annum.

★ **Low insurance rates.**

With the Mobyomatic, riding is at its best and easiest. There are only two controls to think of, throttle and brakes. The completely automatic gear and Dimoby clutch system thinks for you and does all the transmission work by itself. The Mobyomatic* automatically puts itself into the right gear for the speed and the road conditions at the time. There's extra power built into the Mobyomatic too, giving you that little extra surge of speed when you want it.

* Protected by patents.

Mobyomatic



£75.19.6 (inc. P.T.)

Engine: 49 c.c. high efficiency; chrome-lined cylinder with flat-top piston; 1.35 b.h.p. at 3,400 r.p.m.

Frame: Patented all pressed steel, incorporating 1½ gal. fuel tank.

Transmission: Through fully automatic Dimoby clutch and infinitely variable gearing to ¼×.305 heavy duty roller chain. Overall gear ratio ranges from 19:1 to 12:1.

Ignition and Lighting: NOV1 high output flywheel magneto.

Suspension: Telescopic front forks with long travel; plunger-type rear suspension.

Brakes: Powerful internal expanding in full-width plated hubs.

Wheels: Chromium plated rims with heavy duty plated spokes.

Tyres: 23×2.00 white wall balloon.

Saddle: Large dimension soft top cantilever type.

Handlebars: With straight pull levers and twist grip throttle and decompressor control.

Cranks and Pedals: Heavily chromed, with white rubber steps.

Mudguards: Exceptionally deeply valanced heavy gauge dome section steel.

Equipment: Speedometer set in headlamp, electric horn, tyre pump and tool kit in steel container attached to rear of frame.

Weight (dry): 88 lb.

★ **Speed:** 30-35 m.p.h. approx.

★ **Fuel Consumption:** 200 m.p.g. approx.

★ **Tax:** 17/6 per annum.

★ **Low insurance rates.**

PEDALLING: By moving a simple finger and thumb control the engine can be disconnected and the machine then pedalled as easily as a bicycle.



PANNIER BAGS

A complete set of Steel Frames in matching light beige, with detachable waterproof Pannier Bags, tailored to fit your Mobylette. Leather straps and all fittings.

56/- Inc. P.T.

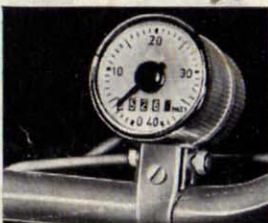
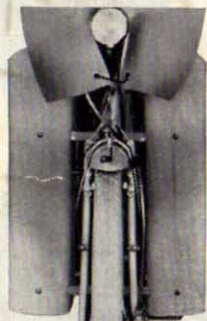
LEG SHIELDS

Strong Steel Leg Shields made for the Mobylette and supplied in matching colour. Complete with all fittings (as illustrated) 28/-

Full width apron-type Leg Shields, designed for the Mobylette and Mobyomatic.

Type 1 for Mobylette Light Beige 65/6

Type 2 for Mobyomatic Pastel Blue 75/6



SPEEDOMETER

A Continental Speedometer made for the Mobylette. Fitted with mileage indicator reading up to 10,000 miles. Speed reading up to 40 m.p.h. 42/6

Smith's model also available 49/6

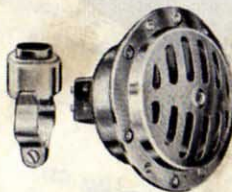
WINDSCREEN

Strong, full-size Perspex Screen and Grey P.V.C. Skirt, complete with all fittings. 47/9



HORN

Imported for use on Mobylette, at a price that defies competition. 15 watt, 6 volt, 2 1/2 in. diameter. Chromium plated 7/6
Complete with handle-bar clip fitting push-button 10/6



COVER

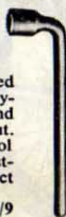
A Waterproof Cover shaped to completely protect your Mobylette. Made from 5 thou. P.V.C. material 25/6

Shaped to fit machine with Windshield. 27/6



OFFSET BOX WRENCH

14 mm. Tapered to remove Mobylette flywheel and clutch lock-nut. An essential tool for the adjustment of contact breaker points 9/9



SPECIAL WORKSHOP TOOLS

Flywheel Clutch Extractor Ref. 15141 B/S. 6/4
Flywheel Magneto Extractor. Ref. 15142 6/4
Flywheel Grip 50/-
Circlip Pliers 44/7
Set of Seven Open-ended Spanners, Ref. 1/7/001. Sizes 8-22 mm. 28/- set

MOTOR IMPORTS COMPANY LTD.

158 STOCKWELL ROAD, LONDON, S.W.9 Phone: BRlxtou 7807

DEALER'S NAME AND ADDRESS

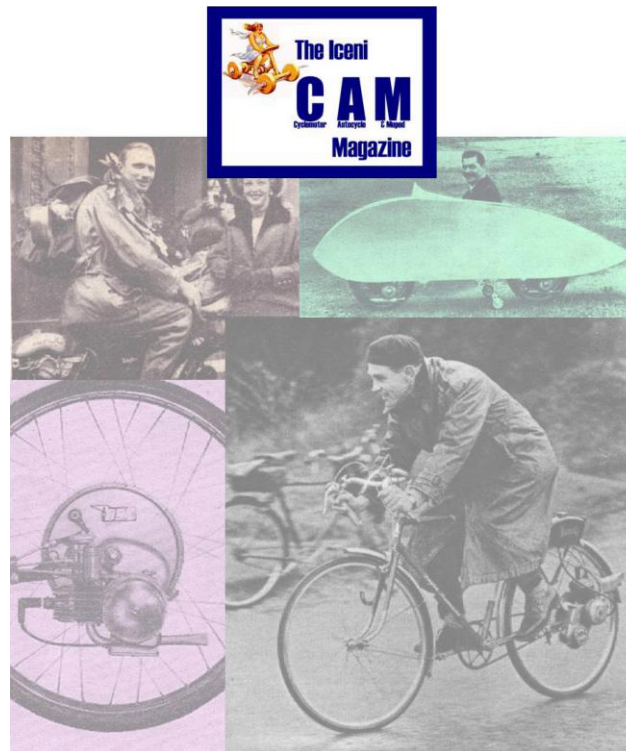
LAWRENCE BERRELOTTI

CYCLE & GENERAL STORES

13, High Road, WOODFORD GREEN, Essex

TFL- BUCKHURST 3548

IceniCAM On-Line Library



www.icenicam.org.uk