

TT PRACTICE TIMES

Only slight changes have been made in the race and practice times for the International Tourist Trophy motor-cycle races, to be held in the Isle of Man in June.

Practicing will commence on Monday, May 26, and there will be seven periods on the Mountain circuit and three on the Clypse circuit.

One slight alteration involves the 125 c.c. light-weight and sidecar races, the starting times of which have been brought forward 15 minutes and 30 minutes respectively, in order to reduce the intervals between the events.

The senior race reverts to seven laps.

PRACTICES	Mountain course	Clypse course
	350 and 500 International	125, 250 and sidecar
Monday, May 26	4.45 a.m. 6.30 p.m.	
Tuesday, May 27	4.45 a.m. 6.30 p.m.	
Wednesday, May 28	4.45 a.m.	6 p.m. (125 c.c.) 7 p.m. (250 c.c.) 8 p.m. (Sidecar)
Thursday, May 29	4.45 a.m.	6 p.m. (250 c.c.) 7 p.m. (250 c.c.) 8 p.m. (Sidecar)
Friday, May 30	4.45 a.m.	6 p.m. (125 c.c.) 7 p.m. (250 c.c.) 8 p.m. (Sidecar)
Saturday, May 31		

RACES

Monday, June 2	Junior race	11.00 a.m.	7 laps
Wednesday, June 4	250 c.c.	10.00 a.m.	10 laps
	125 c.c.	12.30 p.m. app.	10 laps
	Sidecar	3.00 p.m. app.	10 laps
Friday, June 6	Senior race	11.00 a.m.	7 laps

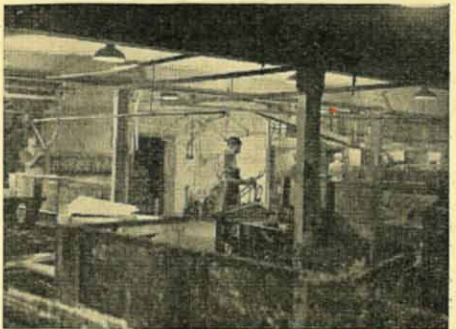
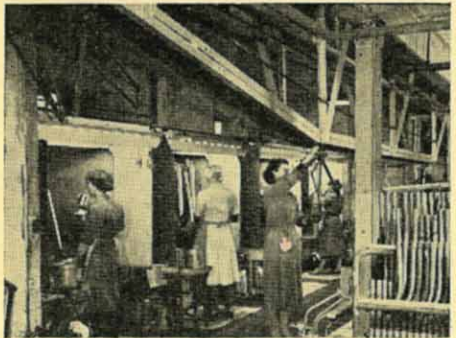
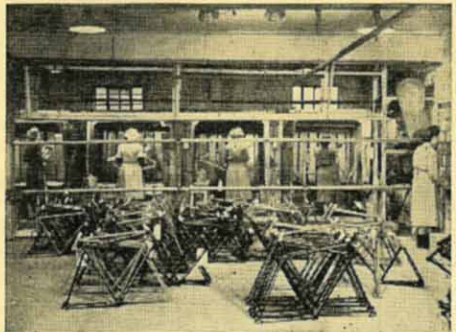
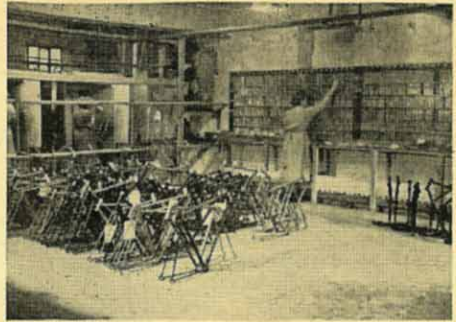
LATEST DUNLOP GUIDE

There are many new features in the 12th edition of the Dunlop Guide which has just been published. In more than 830 pages it provides answers to most of the questions the motor-cyclist is likely to put to himself.

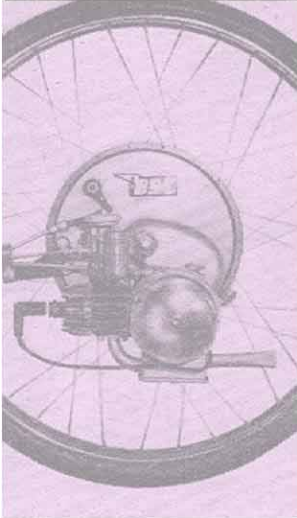
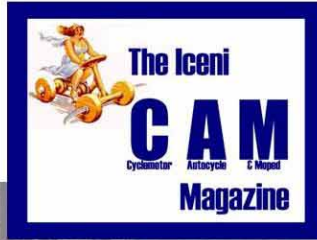
The gazetteer of towns has been brought up-to-date, and it incorporates a number of new features. Thirty more town street plans have been included, bringing the total to 167; the principal car parks and public conveniences are shown on the street plans; and details of hotel accommodation now include such things as the availability of a night porter, the provision of television, and the existence of a ballroom.

The 24-page atlas has been revised, and it now shows new and projected by-pass roads. In addition maps of holiday touring areas have been introduced. The Guide retails at 7s. 6d.

FLOW-FINISHING METHODS recently introduced by the Elswick-Hopper Cycle and Motor Co. Ltd., of Barton-on-Humber, by which the work has been speeded up by 50 per cent: (top) Advance card-indexing of the required finishes, by tag; work awaiting attention, and the spray-booths; hanging frames on the conveyor; and (bottom) end of the conveyor, where the finished frames and forks are checked.



IceniCAM Information Service



www.icenicam.org.uk