

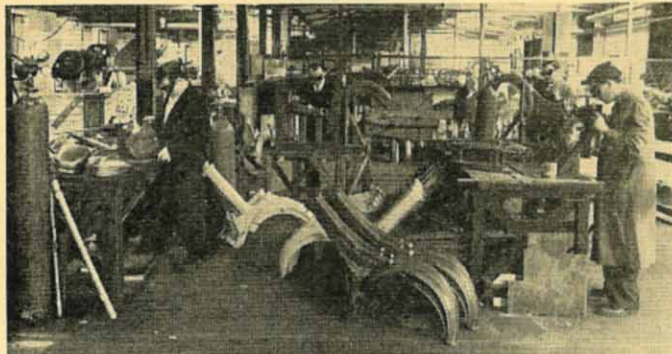
SEEING THE WHIPPET MADE—

A photographic tour of Dunkley Motors

DEALERS who prefer "British-made" goods only will be interested in the Whippet 60 c.c. and the Whippet Super Sports 65 c.c. lightweights produced by Dunkley Motors, at National Works, Bath Road, Hounslow, Middlesex. Except for a few small parts the machines are manufactured in their entirety in the 35,000 square feet factory.

In recent months this company, under the managing directorship of C. Jeffreys, has developed its motor-cycle business and now has about seventy employees engaged on this work. Previously, Dunkley were primarily concerned with pram manufacture, but this activity has been reduced.

Left: Intense concentration in the engine assembly shop.



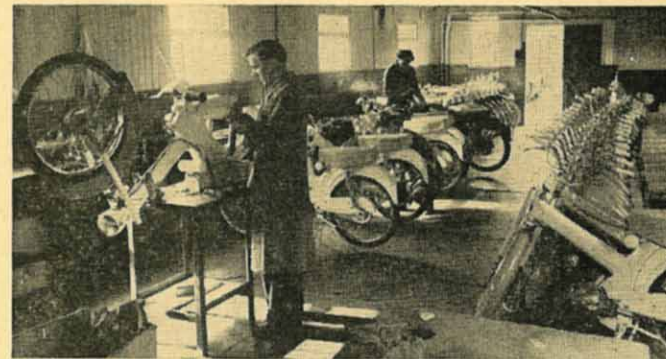
Left: Welding being carried out on frames and tanks.

Below: The machine shop of Dunkley Motors.

Below, left: The foundry—the operator is shown removing a casting.



Final assembly—rows of gleaming machines await despatch to the dealer's premises.



Output at the moment is at the rate of 40 per week, but in a tour of the factory with W. Jopp, works manager, it was obvious to see that this figure can be greatly increased. Already export enquiries have been received for the machines, and these coupled with the expected home demand will no doubt cause an uplift in output.

The machines have an excellent stove enamel finish, acquired in the modern paint shop which has two ovens and four spray booths. Illustrations on this and facing page indicate the productive capacity of Dunkley Motors. A description of the two models appeared in the September 28 issue of the *Trader*.

—AND HANDLING IT ON THE ROADS

The Dunkley Whippet 60 sells at £82 19s. 0d., including tax. Its appearance is ultra-modern, and its road performance, too, is on up-to-date lines. A representative of the "Trader" has been using a Whippet 60 during the past few weeks. His general impressions are of a machine that has quick and powerful response from the throttle, a high cruising speed, and smooth progression at low speeds. This snappiness in running derives from the employment of a four-stroke ohv engine (with sump lubrication).

Starting on the low gear, and changing up early, a speed of 25 m.p.h. can be attained in a matter of seconds. Along country side-roads, no "flogging" of the engine was noticeable as the Whippet gained and maintained its maximum touring speed of 35 m.p.h.; in traffic, the low gear of the two speed (although inclined to be noisy) enabled walking pace to be kept readily.

The large dualseat was comfortable, and the

two 4 in. brakes, used in conjunction, allowed crash stops to be made that would satisfy the most critical L-tester.

Besides the Dunkley Whippet 60, Dunkley Motors have also available the Super Sports 65, which sells at £89 19s. 4d.

The Super Sports is finished in British racing green and it has a two-gallon tank, together with a dualseat, an ohv four-stroke engine, a two-speed, telescopic front forks and swinging arm rear suspension, full-width front hub-brakes, 23 in. by 2 in. wheels and full electrical equipment.

Agents are now being appointed in all parts of the country. Applications should be addressed to Dunkley Motors, National Works, Bath Road, Hounslow, Middlesex (Hounslow 5459).

Dunkley Motors are making a strong point that dealers who sell Whippet 60 models have the advantage of knowing that when components need replacing, they will be available readily from a British factory.

Castrol enters chemical industry

A further expansion of the trading interests of the Wakefield Group of Companies, is announced.

For many years, the Wakefield Group has been a large-scale producer of chemical additives for the lubricating oils of its own manufacture. Certain of these additives will, in future, be available to the outside market.

The marketing of the chemical products of the Group will be carried out through its Member Company, Edwin Cooper and Co. Ltd., of 43 Grosvenor Street, W.1.

Busmar fire

A fire on October 26 at the premises of Busmar Ltd., at Blackpool, did considerable damage. Emergency arrangements are expected to be in full operation by November 11.

Lombard Banking at Southsea

Lombard Banking Ltd. opened a branch office to serve the Portsmouth and Southsea areas on October 28.

The new office, which is situated at Lombard House, 34 Elm Grove, Southsea, is managed by D. J. Rowe (Portsmouth 6656).

IceniCAM Information Service



www.icenicam.org.uk