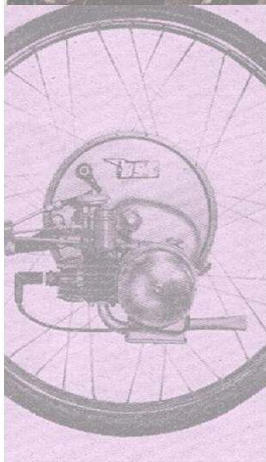


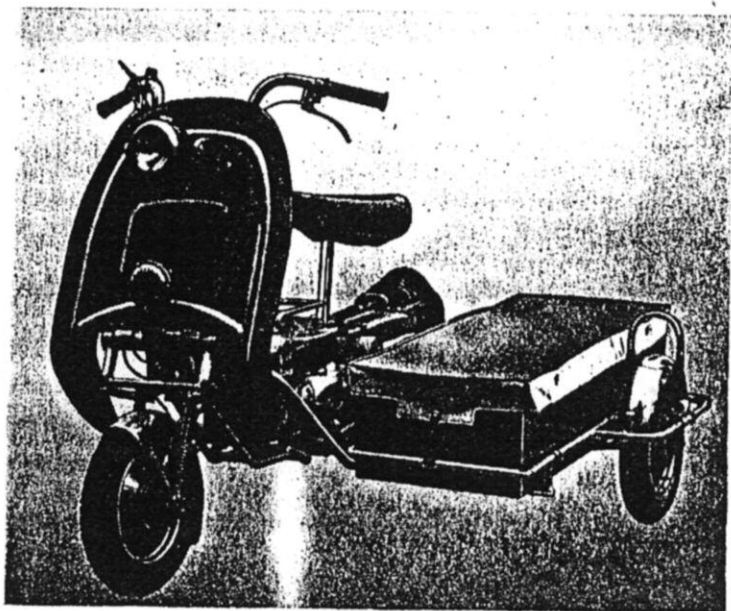
IceniCAM Information Service



www.icenicam.org.uk



THE CORGI SIDE-CARRIER



THE CORGI SIDE-CARRIER can be fitted to any CORGI model without difficulty, and can be used by tradesmen or private owners for the carriage of goods.

The dimensions of the body are : Length 2' 10", Width 1' 2", Depth 9", and it is strongly constructed from pressed steel. The body is quickly detachable, so that it can be used — for instance — as a tool box for tradesmen.*

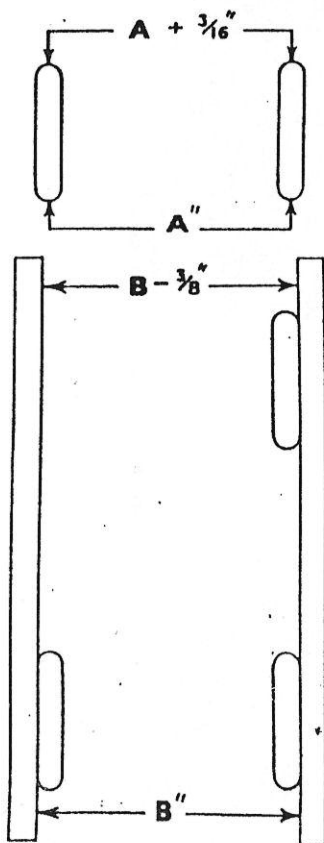
The single wheel is of normal CORGI pattern, with telescopic suspension. A side-light is fitted, with necessary leads.

The carrier is available in the same range of colour finishes as the Mark IV CORGI.

Available from all Corgi Dealers

How to fit the Sidecarrier.

1. Remove from the motorcycle the petrol tank front mounting bolt, the nearside footrest, and the engine rear fixing bolt.
2. Slacken the clamps on the front and rear connection tubes on the sidecarrier.
3. Attach the sidecarrier to the cycle by inserting the attachment bolt on the front connection tube through the petrol tank front mounting; locate the footrest bracket on the Intermediate connection tube in the footrest channel from which the nearside footrest has just been removed; place the adaptor plates, which are fastened on the rear connection attachment bolt, on each side of the rear engine mounting lugs and insert the 3" bolt supplied with the sidecarrier. Secure the attachment bolt and the 3" bolt with the nuts and washers previously removed, and replace the footrest bolt and nut.



4. **Alignment of sidecarrier.** This is effected by varying the position of the clamps on the connecting tubes, and by using one of the three holes in the footrest bracket.

Vertical alignment. The distance between the rear wheel and the sidecarrier wheel should be $\frac{3}{16}"$ greater at the top centre of the wheels than it is at the bottom centre.

"Toe-in." Further adjustment of the front clamp will enable the sidecarrier wheel to be made to 'toe-in.' If two straight pieces of wood are laid, as in the sketch, touching the rims of the wheels, the distance apart at the front wheel should be $\frac{3}{8}"$ of an inch less than the distance apart at the back of the rear sidecarrier wheels.

5. Finally check that all the nuts, bolts and clamps are tight.
6. The tyre pressure for the sidecarrier wheel is about 30 lbs. per square inch.